

**AIR OPS**

# Boot Fire

NVHTE - 030600

9/14/2018

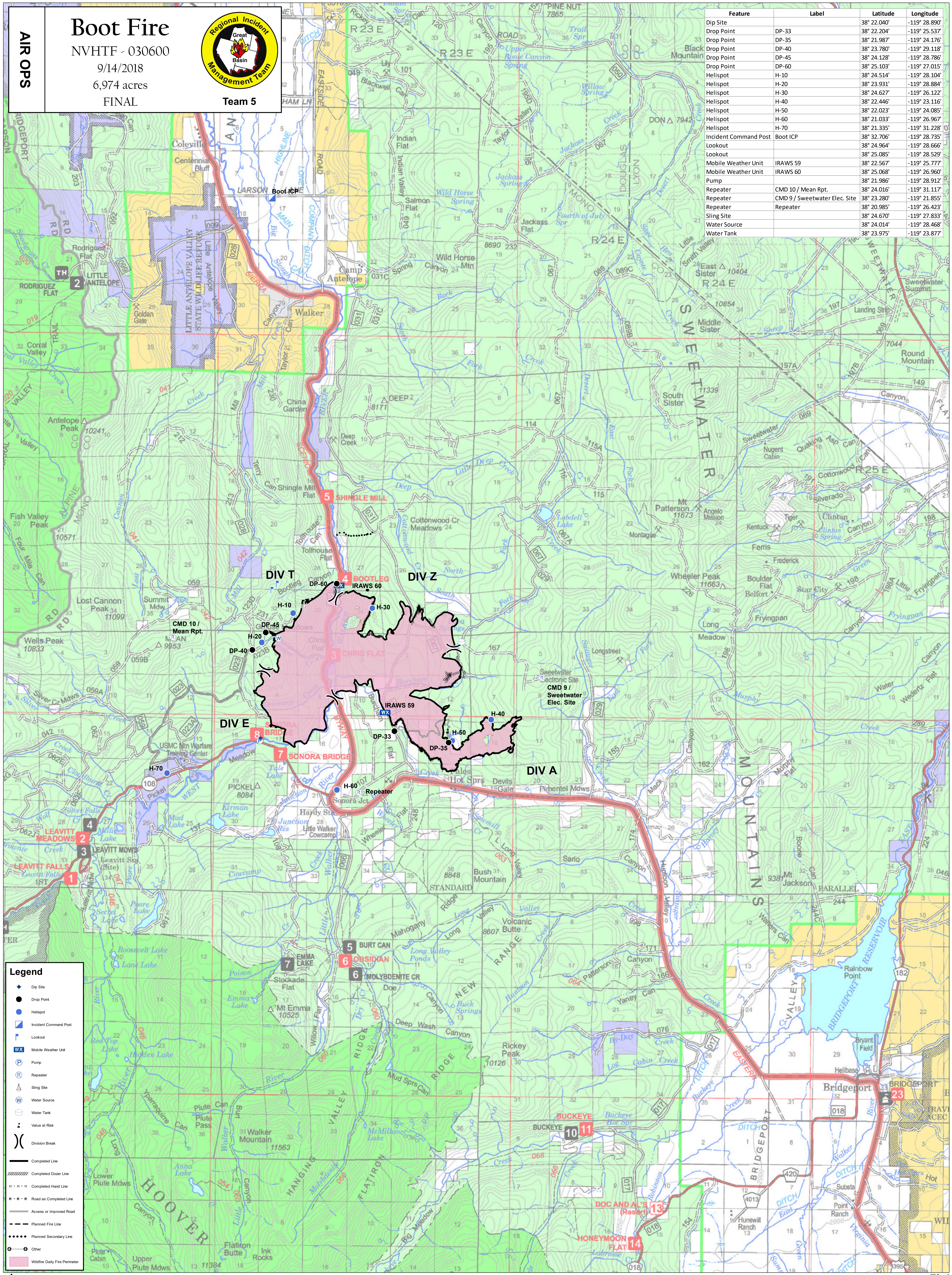
6,974 acres

FINAL



Team 5

Feature	Label	Latitude	Longitude
Dip Site		38° 22.040'	-119° 28.890'
Drop Point	DP-33	38° 22.204'	-119° 25.537'
Drop Point	DP-35	38° 21.987'	-119° 24.176'
Drop Point	DP-40	38° 23.780'	-119° 29.118'
Drop Point	DP-45	38° 24.128'	-119° 28.786'
Drop Point	DP-60	38° 25.103'	-119° 27.015'
Helispot	H-10	38° 24.514'	-119° 28.104'
Helispot	H-20	38° 23.931'	-119° 28.884'
Helispot	H-30	38° 24.627'	-119° 26.122'
Helispot	H-40	38° 22.446'	-119° 23.116'
Helispot	H-50	38° 22.023'	-119° 24.085'
Helispot	H-60	38° 21.033'	-119° 26.967'
Helispot	H-70	38° 21.335'	-119° 31.228'
Incident Command Post	Boot ICP	38° 32.706'	-119° 28.735'
Lookout		38° 24.964'	-119° 28.666'
Lookout		38° 25.085'	-119° 28.529'
Mobile Weather Unit	IRAWS 59	38° 22.567'	-119° 25.777'
Mobile Weather Unit	IRAWS 60	38° 25.068'	-119° 26.960'
Pump		38° 21.986'	-119° 28.912'
Repeater	CMD 10 / Mean Rpt.	38° 24.016'	-119° 31.117'
Repeater	CMD 9 / Sweetwater Elec. Site	38° 23.280'	-119° 21.855'
Repeater	Repeater	38° 20.985'	-119° 26.423'
Sling Site		38° 24.670'	-119° 27.833'
Water Source		38° 24.014'	-119° 28.468'
Water Tank		38° 23.975'	-119° 23.877'



**Legend**

- Dip Site
- Drop Point
- Helispot
- Incident Command Post
- Lookout
- Mobile Weather Unit
- Pump
- Repeater
- Sling Site
- Water Source
- Water Tank
- Value at Risk
- Division Break
- Completed Line
- Completed Dozer Line
- Completed Hand Line
- Road as Completed Line
- Access or Improved Road
- Planned Fire Line
- Planned Secondary Line
- Other
- Wildfire Daily Fire Perimeter