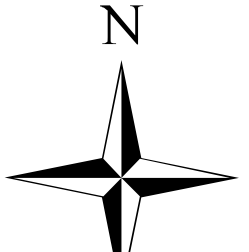
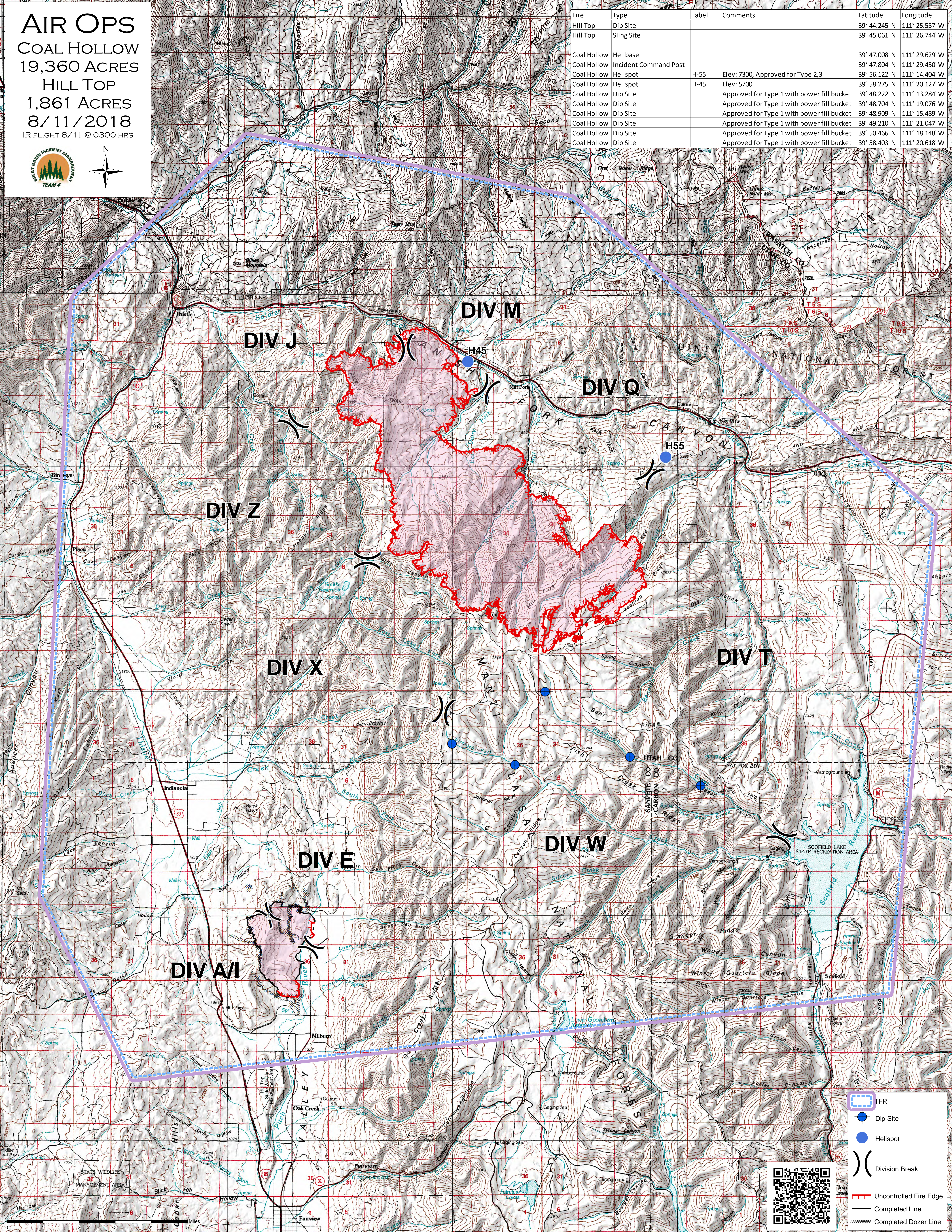


**AIR OPS**  
**COAL HOLLOW**  
**19,360 ACRES**  
**HILL TOP**  
**1,861 ACRES**  
**8/11/2018**  
 IR FLIGHT 8/11 @ 0300 HRS



Fire	Type	Label	Comments	Latitude	Longitude
Hill Top	Dip Site			39° 44.245' N	111° 25.557' W
Hill Top	Sling Site			39° 45.061' N	111° 26.744' W
Coal Hollow	Helibase			39° 47.008' N	111° 29.629' W
Coal Hollow	Incident Command Post			39° 47.804' N	111° 29.450' W
Coal Hollow	Helispot	H-55	Elev: 7300, Approved for Type 2,3	39° 56.122' N	111° 14.404' W
Coal Hollow	Helispot	H-45	Elev: 5700	39° 58.275' N	111° 20.127' W
Coal Hollow	Dip Site		Approved for Type 1 with power fill bucket	39° 48.222' N	111° 13.284' W
Coal Hollow	Dip Site		Approved for Type 1 with power fill bucket	39° 48.704' N	111° 19.076' W
Coal Hollow	Dip Site		Approved for Type 1 with power fill bucket	39° 48.909' N	111° 15.489' W
Coal Hollow	Dip Site		Approved for Type 1 with power fill bucket	39° 49.210' N	111° 21.047' W
Coal Hollow	Dip Site		Approved for Type 1 with power fill bucket	39° 50.466' N	111° 18.148' W
Coal Hollow	Dip Site		Approved for Type 1 with power fill bucket	39° 58.403' N	111° 20.618' W



**TFR** (dashed blue line)

**Dip Site** (blue dot)

**Helispot** (blue circle)

**Division Break** (black line with double slashes)

**Uncontrolled Fire Edge** (red outline)

**Completed Line** (solid black line)

**Completed Dozer Line** (dashed black line)