

AIR OPS MAP

COAL HOLLOW FIRE

19,360 ACRES

HILLTOP FIRE

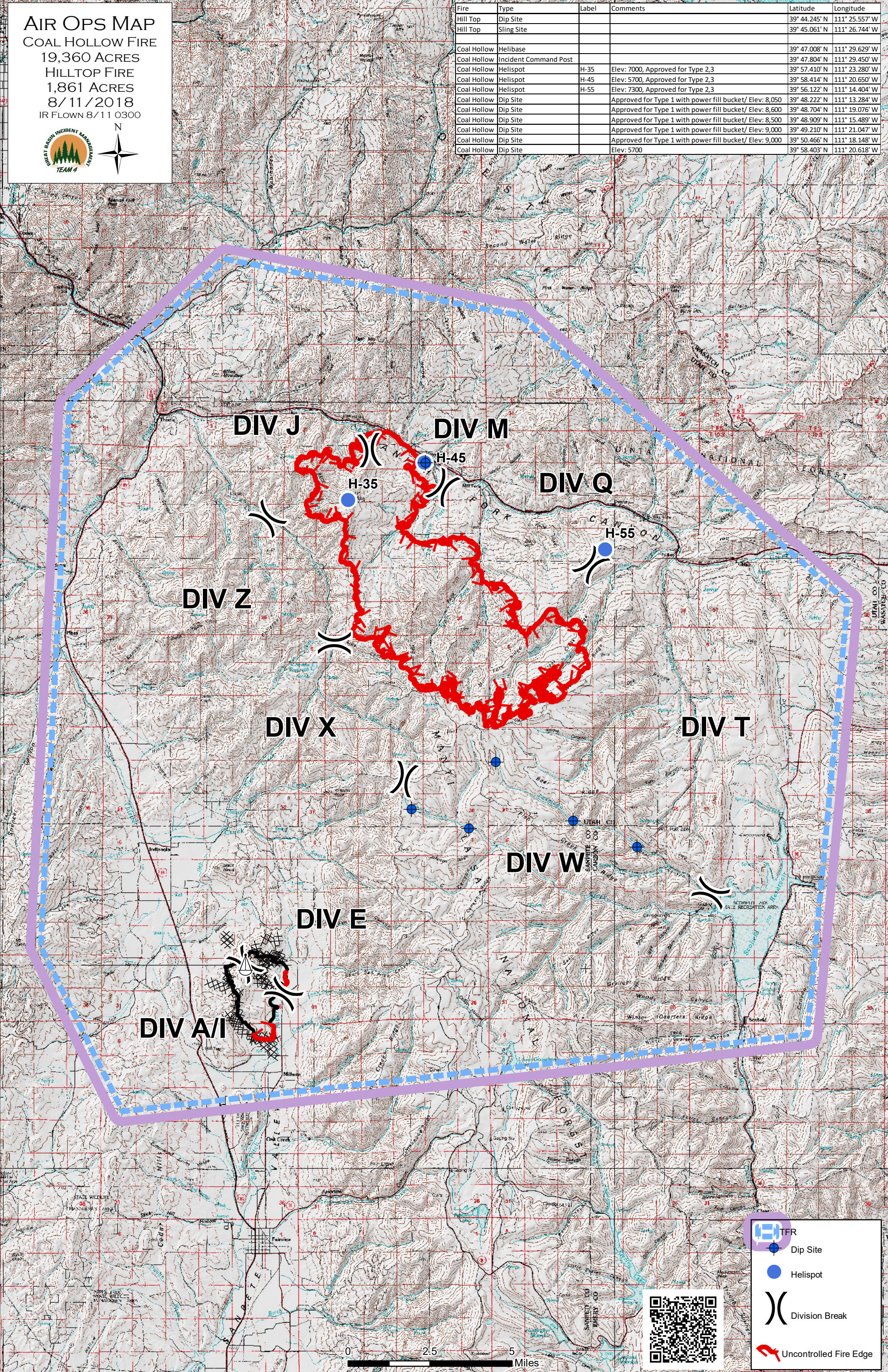
1,861 ACRES

8/11/2018

IR FLOWN 8/11 0300



Fire	Type	Label	Comments	Latitude	Longitude
Hill Top	Dip Site			39° 44.245' N	111° 25.557' W
Hill Top	Sling Site			39° 45.061' N	111° 26.744' W
Coal Hollow	Helibase			39° 47.008' N	111° 29.629' W
Coal Hollow	Incident Command Post			39° 47.804' N	111° 29.450' W
Coal Hollow	Helispot	H-35	Elev: 7000, Approved for Type 2,3	39° 57.410' N	111° 23.280' W
Coal Hollow	Helispot	H-45	Elev: 5700, Approved for Type 2,3	39° 58.414' N	111° 20.650' W
Coal Hollow	Helispot	H-55	Elev: 7300, Approved for Type 2,3	39° 56.122' N	111° 14.404' W
Coal Hollow	Dip Site		Approved for Type 1 with power fill bucket/ Elev: 8,050	39° 48.222' N	111° 13.284' W
Coal Hollow	Dip Site		Approved for Type 1 with power fill bucket/ Elev: 8,600	39° 48.704' N	111° 19.076' W
Coal Hollow	Dip Site		Approved for Type 1 with power fill bucket/ Elev: 8,500	39° 48.909' N	111° 15.489' W
Coal Hollow	Dip Site		Approved for Type 1 with power fill bucket/ Elev: 9,000	39° 49.210' N	111° 21.047' W
Coal Hollow	Dip Site		Approved for Type 1 with power fill bucket/ Elev: 9,000	39° 50.466' N	111° 18.148' W
Coal Hollow	Dip Site		Elev: 5700	39° 58.403' N	111° 20.618' W



DIV J

DIV M

DIV Q

DIV Z

DIV X

DIV T

DIV W

DIV E

DIV A/I

TFR

Dip Site

Helispot

Division Break

Uncontrolled Fire Edge

