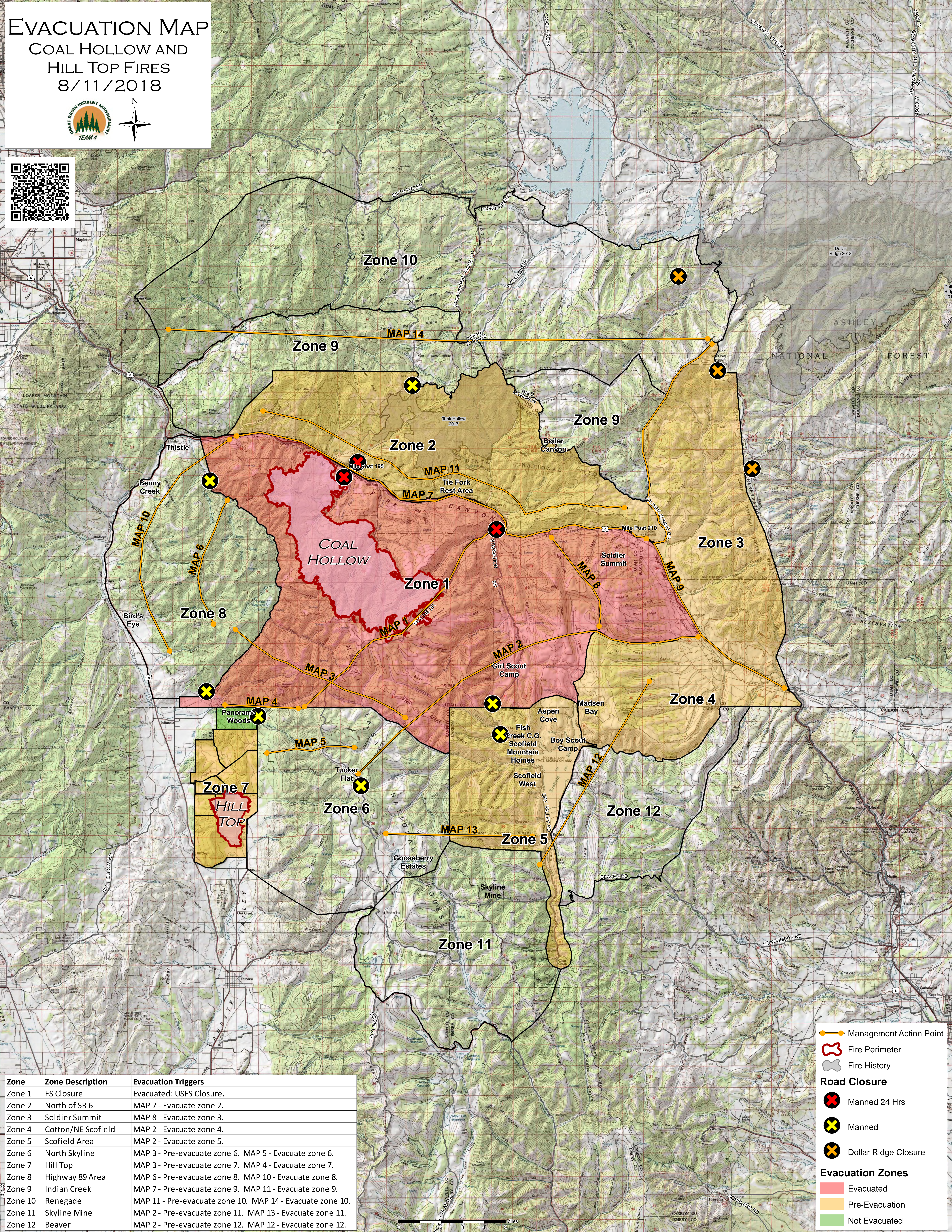
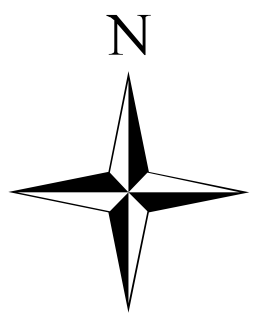


EVACUATION MAP

COAL HOLLOW AND
HILL TOP FIRES
8/11/2018



Zone	Zone Description	Evacuation Triggers
Zone 1	FS Closure	Evacuated: USFS Closure.
Zone 2	North of SR 6	MAP 7 - Evacuate zone 2.
Zone 3	Soldier Summit	MAP 8 - Evacuate zone 3.
Zone 4	Cotton/NE Scofield	MAP 2 - Evacuate zone 4.
Zone 5	Scofield Area	MAP 2 - Evacuate zone 5.
Zone 6	North Skyline	MAP 3 - Pre-evacuate zone 6. MAP 5 - Evacuate zone 6.
Zone 7	Hill Top	MAP 3 - Pre-evacuate zone 7. MAP 4 - Evacuate zone 7.
Zone 8	Highway 89 Area	MAP 6 - Pre-evacuate zone 8. MAP 10 - Evacuate zone 8.
Zone 9	Indian Creek	MAP 7 - Pre-evacuate zone 9. MAP 11 - Evacuate zone 9.
Zone 10	Renegade	MAP 11 - Pre-evacuate zone 10. MAP 14 - Evacuate zone 10.
Zone 11	Skyline Mine	MAP 2 - Pre-evacuate zone 11. MAP 13 - Evacuate zone 11.
Zone 12	Beaver	MAP 2 - Pre-evacuate zone 12. MAP 12 - Evacuate zone 12.

- Management Action Point
- Fire Perimeter
- Fire History
- Road Closure**
- Manned 24 Hrs
- Manned
- Dollar Ridge Closure
- Evacuation Zones**
- Evacuated
- Pre-Evacuation
- Not Evacuated