

COAL HOLLOW UT-MLF-008333

Branch II, Div Q 8/13/18

Perimeter as of 7/12/18 0030 20,352 ac.



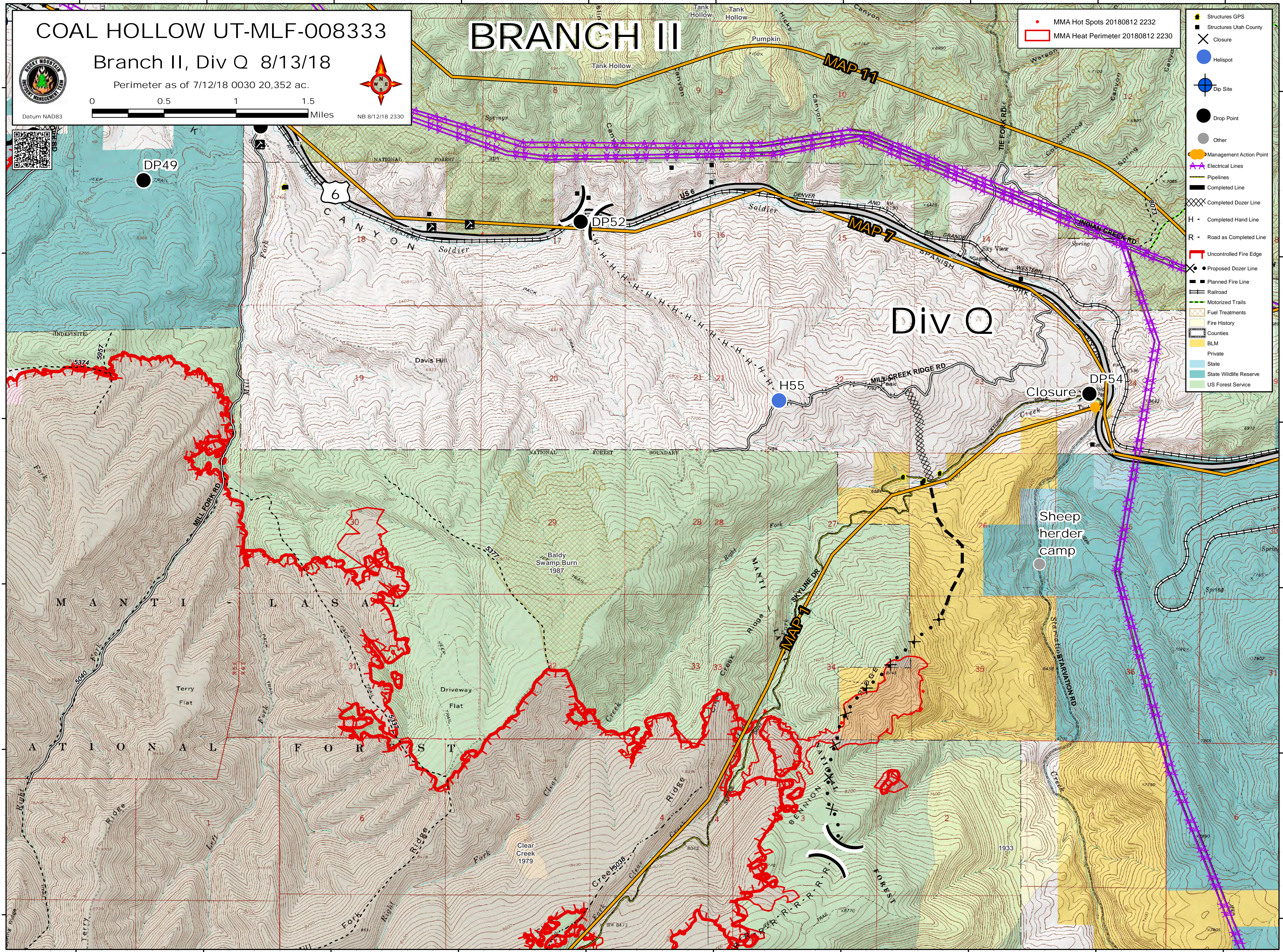
Datum NAD83

NB 8/12/18 2330

BRANCH III

- MMA Hot Spots 20180812 2232
- MMA Heat Perimeter 20180812 2230

- Structures GPS
- Structures Utah County
- Closure
- Helispot
- Dip Site
- Drop Point
- Other
- Management Action Point
- Electrical Lines
- Pipelines
- Completed Line
- Completed Dozer Line
- Completed Hand Line
- Road as Completed Line
- Uncontrolled Fire Edge
- Proposed Dozer Line
- Planned Fire Line
- Railroad
- Motorized Trails
- Fuel Treatments
- Fire History
- Counties
- BLM
- Private
- State
- State Wildlife Reserve
- US Forest Service



Div Q

Sheep herder camp

MAP-11

MAP-7

MAP-1

111°20'W 111°19'W 111°18'W 111°17'W 111°16'W 111°15'W 111°14'W 111°13'W 111°12'W 111°11'W

39°58'N 39°57'N 39°56'N 39°55'N 39°54'N 39°53'N