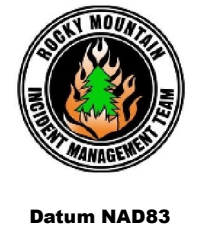


COAL HOLLOW UT-MLF-008333

Branch II, Div Q 8/13/18

Perimeter as of 7/12/18 0030 20,352 ac.

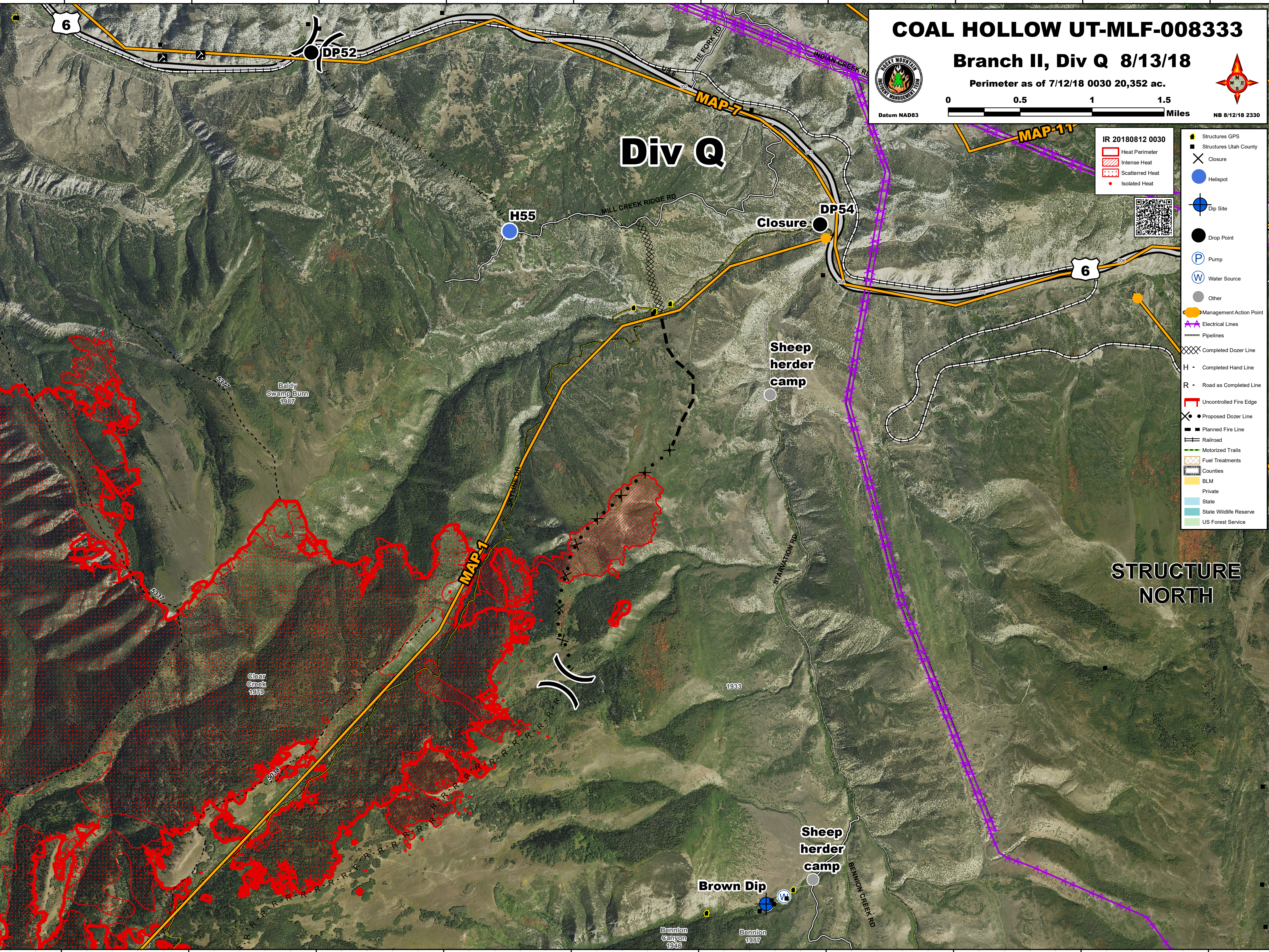


IR 20180812 0030

- Heat Perimeter
- Intense Heat
- Scattered Heat
- Isolated Heat



- Structures GPS
- Structures Utah County
- Closure
- Helispot
- Dip Site
- Drop Point
- Pump
- Water Source
- Other
- Management Action Point
- Electrical Lines
- Pipelines
- Completed Dozer Line
- H - Completed Hand Line
- R - Road as Completed Line
- Uncontrolled Fire Edge
- Proposed Dozer Line
- Planned Fire Line
- Railroad
- Motorized Trails
- Fuel Treatments
- Counties
- BLM
- Private
- State
- State Wildlife Reserve
- US Forest Service



39°57'N
39°56'N
39°55'N
39°54'N
39°53'N
39°52'N

39°57'N
39°56'N
39°55'N
39°54'N
39°53'N
39°52'N

111°18'W 111°17'W 111°16'W 111°15'W 111°14'W 111°13'W 111°12'W 111°11'W 111°10'W 111°9'W