

COAL HOLLOW UT-MLF-008333

Branch III, Div M 8/13/18

Perimeter as of 8/13/18 0200 22,178 ac.



Datum NAD83



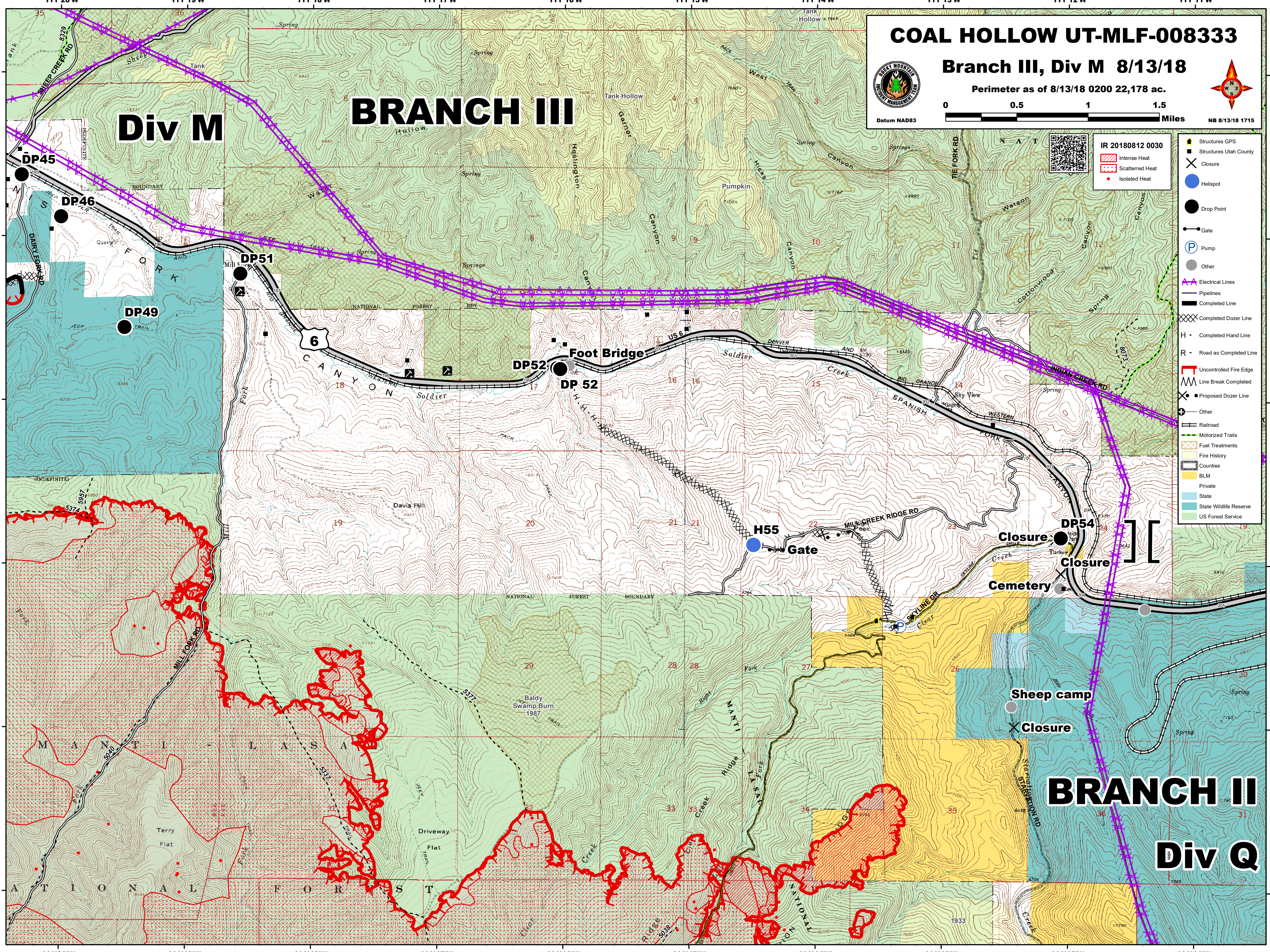
NB 8/13/18 1715



IR 20180812 0030

- Intense Heat
- Scattered Heat
- Isolated Heat

- Structures GPS
- Structures Utah County
- Closure
- Helispot
- Drop Point
- Gate
- Pump
- Other
- Electrical Lines
- Pipelines
- Completed Line
- Completed Dozer Line
- Completed Hand Line
- Road as Completed Line
- Uncontrolled Fire Edge
- Line Break Completed
- Proposed Dozer Line
- Other
- Railroad
- Motorized Trails
- Fuel Treatments
- Fire History
- Counties
- BLM
- Private
- State
- State Wildlife Reserve
- US Forest Service



BRANCH III

Div M

BRANCH II

Div Q

Foot Bridge

H55 Gate

Closure

Cemetery

Sheep camp

Closure

DP45

DP46

DP49

DP51

DP52

DP 52

DP54

111°20'W 111°19'W 111°18'W 111°17'W 111°16'W 111°15'W 111°14'W 111°13'W 111°12'W 111°11'W

39°54'N

39°55'N

39°56'N

39°57'N

39°58'N

39°59'N

39°54'N

39°55'N

39°56'N

39°57'N

39°58'N

39°59'N