

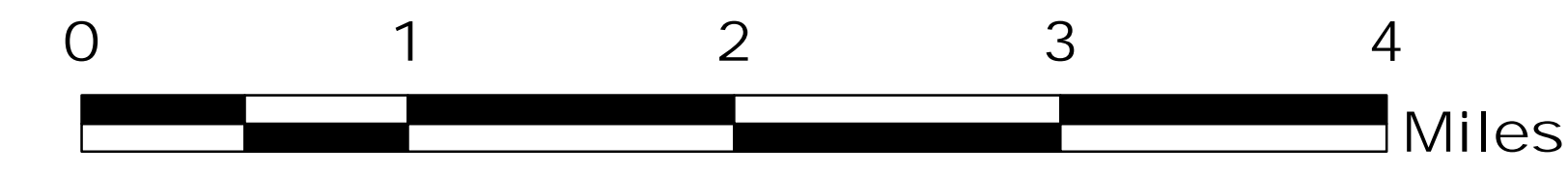
COAL HOLLOW UT-MLF-008333

Operations Map 8/13/18

Perimeter as of 7/12/18 0030 20,352 ac.

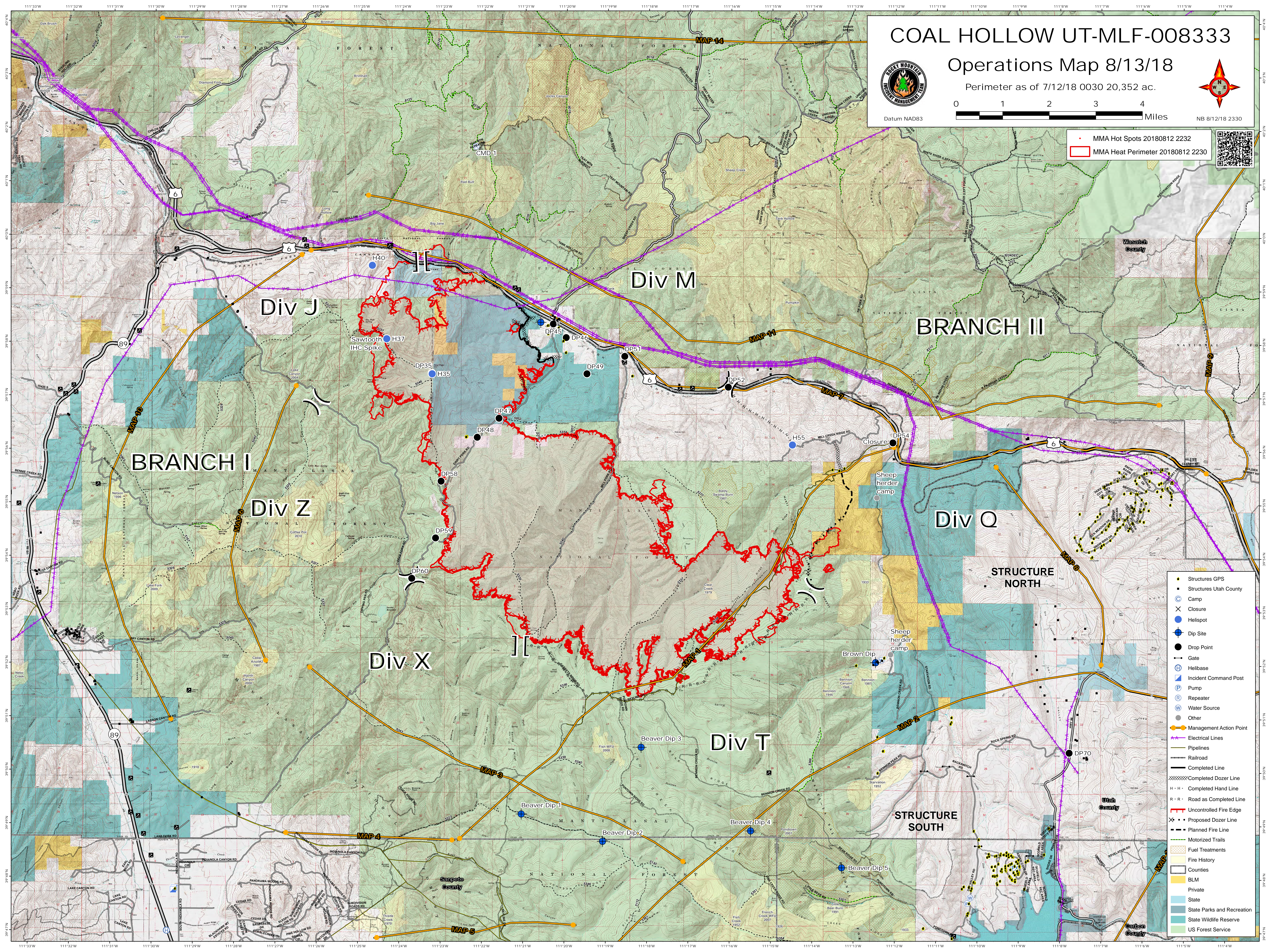


Datum NAD83



NB 8/12/18 2330

- MMA Hot Spots 20180812 2232
- MMA Heat Perimeter 20180812 2230



- Structures GPS
- Structures Utah County
- Camp
- Closure
- Helispot
- Dip Site
- Drop Point
- Gate
- Helibase
- Incident Command Post
- Pump
- Repeater
- Water Source
- Other
- Management Action Point
- Electrical Lines
- Pipelines
- Railroad
- Completed Line
- Completed Dozer Line
- Completed Hand Line
- Road as Completed Line
- Uncontrolled Fire Edge
- Proposed Dozer Line
- Planned Fire Line
- MotORIZED Trails
- Fuel Treatments
- Fire History
- Counties
- BLM
- Private
- State
- State Parks and Recreation
- State Wildlife Reserve
- US Forest Service