

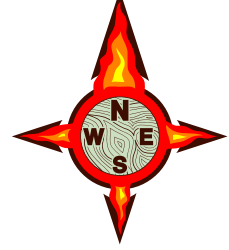
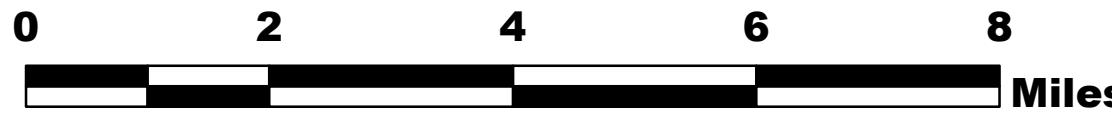
COAL HOLLOW UT-MLF-008333

Air Operations 8/13/18

Perimeter as of 7/12/18 0030 20,352 ac.



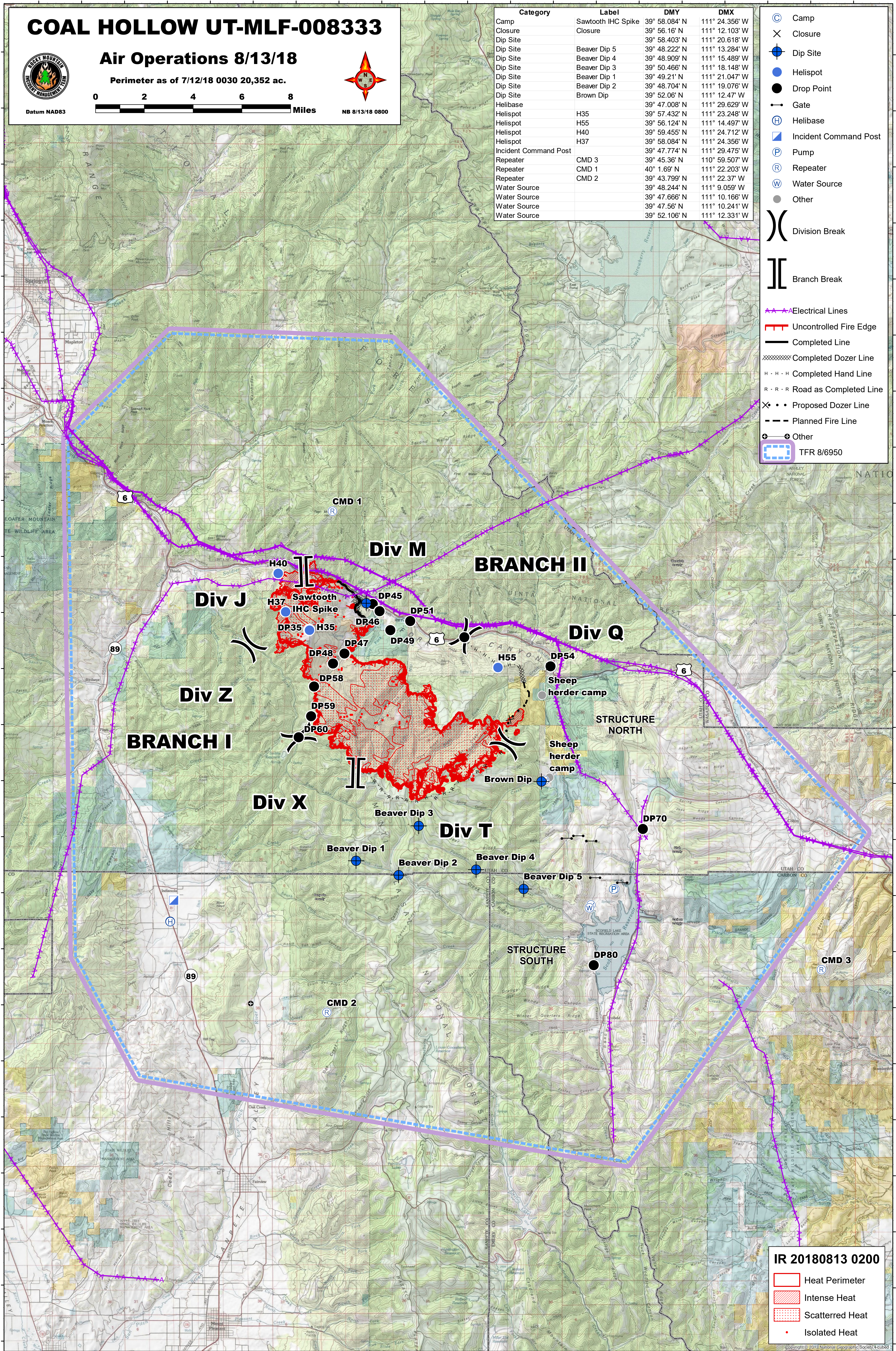
Datum NAD83



NB 8/13/18 0800

Category	Label	DMY	DMX
Camp	Sawtooth IHC Spike	39° 58.084' N	111° 24.356' W
Closure	Closure	39° 56.16' N	111° 12.103' W
Dip Site	Beaver Dip 5	39° 58.403' N	111° 20.618' W
Dip Site	Beaver Dip 4	39° 48.222' N	111° 13.284' W
Dip Site	Beaver Dip 3	39° 48.909' N	111° 15.489' W
Dip Site	Beaver Dip 1	39° 50.466' N	111° 18.148' W
Dip Site	Beaver Dip 2	39° 49.21' N	111° 21.047' W
Dip Site	Beaver Dip 2	39° 48.704' N	111° 19.076' W
Dip Site	Brown Dip	39° 52.06' N	111° 12.47' W
Helibase		39° 47.008' N	111° 29.629' W
Helispot	H35	39° 57.432' N	111° 23.248' W
Helispot	H55	39° 56.124' N	111° 14.497' W
Helispot	H40	39° 59.455' N	111° 24.712' W
Helispot	H37	39° 58.084' N	111° 24.356' W
Incident Command Post		39° 47.774' N	111° 29.475' W
Repeater	CMD 3	39° 45.36' N	110° 59.507' W
Repeater	CMD 1	40° 1.69' N	111° 22.203' W
Repeater	CMD 2	39° 43.799' N	111° 22.37' W
Water Source		39° 48.244' N	111° 9.059' W
Water Source		39° 47.666' N	111° 10.166' W
Water Source		39° 47.56' N	111° 10.241' W
Water Source		39° 52.106' N	111° 12.331' W

- Camp
- Closure
- Dip Site
- Helispot
- Drop Point
- Gate
- Helibase
- Incident Command Post
- Pump
- Repeater
- Water Source
- Other
- Division Break
- Branch Break
- Electrical Lines
- Uncontrolled Fire Edge
- Completed Line
- Completed Dozer Line
- Completed Hand Line
- Road as Completed Line
- Proposed Dozer Line
- Planned Fire Line
- Other
- TFR 8/6950



IR 20180813 0200

- Heat Perimeter
- Intense Heat
- Scattered Heat
- Isolated Heat