

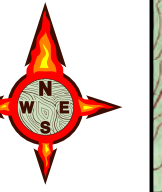
COAL HOLLOW UT-MLF-008333

Branch I, Div J 8/15/18

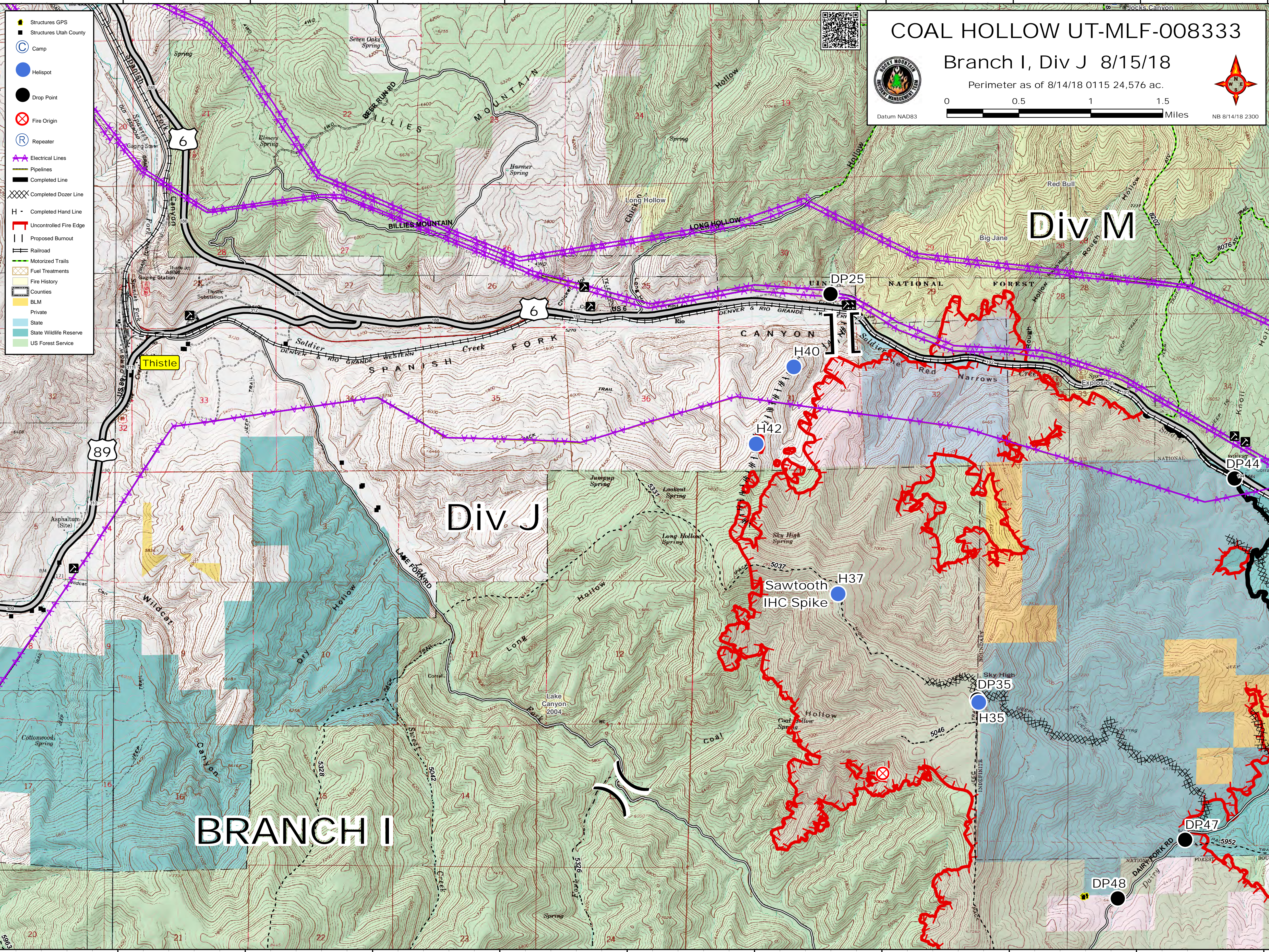
Perimeter as of 8/14/18 0115 24,576 ac.



Datum NAD83



NB 8/14/18 2300



- Structures GPS
- Structures Utah County
- Camp
- Helispot
- Drop Point
- Fire Origin
- Repeater
- Electrical Lines
- Pipelines
- Completed Line
- Completed Dozer Line
- Completed Hand Line
- Uncontrolled Fire Edge
- Proposed Burnout
- Railroad
- Motorized Trails
- Fuel Treatments
- Fire History
- Counties
- BLM
- Private
- State
- State Wildlife Reserve
- US Forest Service

BRANCH I

Div J

Div M