





COAL HOLLOW UT-MLF-008333
 Branch III, Div M 8/15/18
 Perimeter as of 8/14/18 0115 24,576 ac.

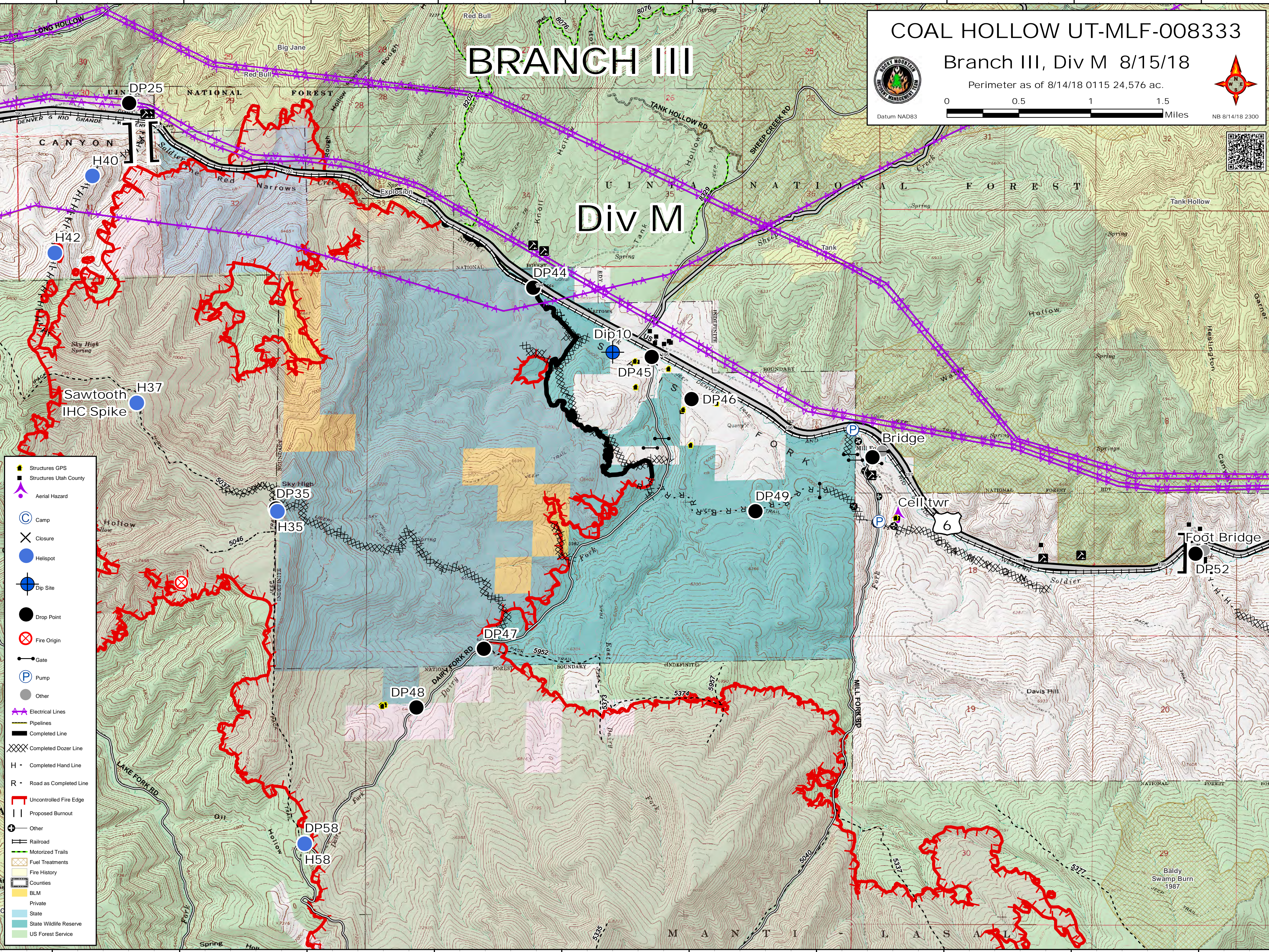


Datum NAD83

BRANCH III

Div M



- Structures GPS
- Structures Utah County
- Aerial Hazard
- Camp
- Closure
- Helispot
- Dip Site
- Drop Point
- Fire Origin
- Gate
- Pump
- Other
- Electrical Lines
- Pipelines
- Completed Line
- Completed Dozer Line
- Completed Hand Line
- Road as Completed Line
- Uncontrolled Fire Edge
- Proposed Burnout
- Other
- Railroad
- Motorized Trails
- Fuel Treatments
- Fire History
- Counties
- BLM
- Private
- State
- State Wildlife Reserve
- US Forest Service