

COAL HOLLOW UT-MLF-008333

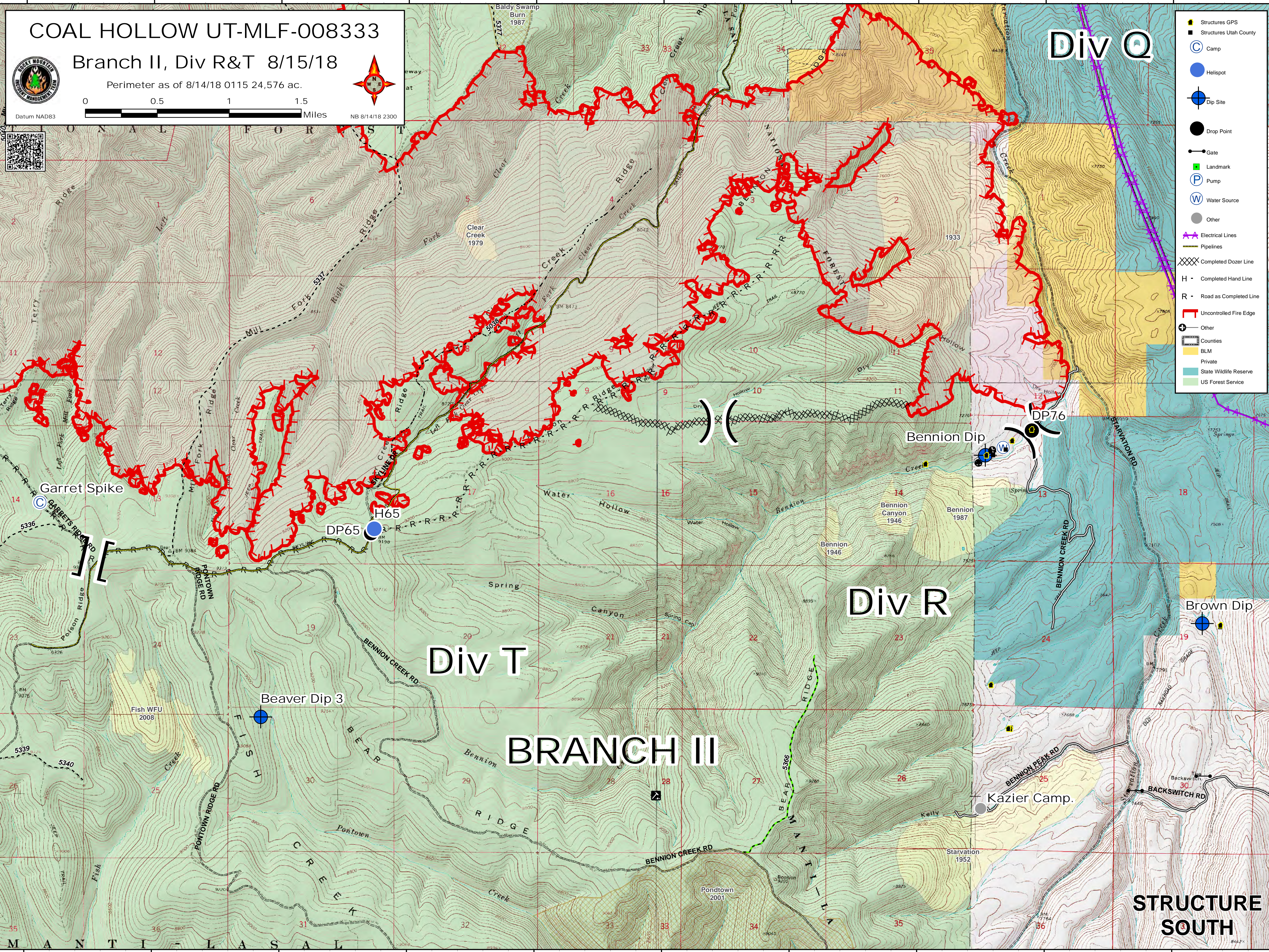
Branch II, Div R&T 8/15/18

Perimeter as of 8/14/18 0115 24,576 ac.



Div Q

- Structures GPS
- Structures Utah County
- Camp
- Helispot
- Dip Site
- Drop Point
- Gate
- Landmark
- Pump
- Water Source
- Other
- Electrical Lines
- Pipelines
- Completed Dozer Line
- Completed Hand Line
- Road as Completed Line
- Uncontrolled Fire Edge
- Other
- Counties
- BLM
- Private
- State Wildlife Reserve
- US Forest Service



Div T

Div R

BRANCH III

STRUCTURE SOUTH