

COAL HOLLOW UT-MLF-008333

Branch II, Div R&T 8/15/18

Perimeter as of 8/14/18 0115 24,576 ac.



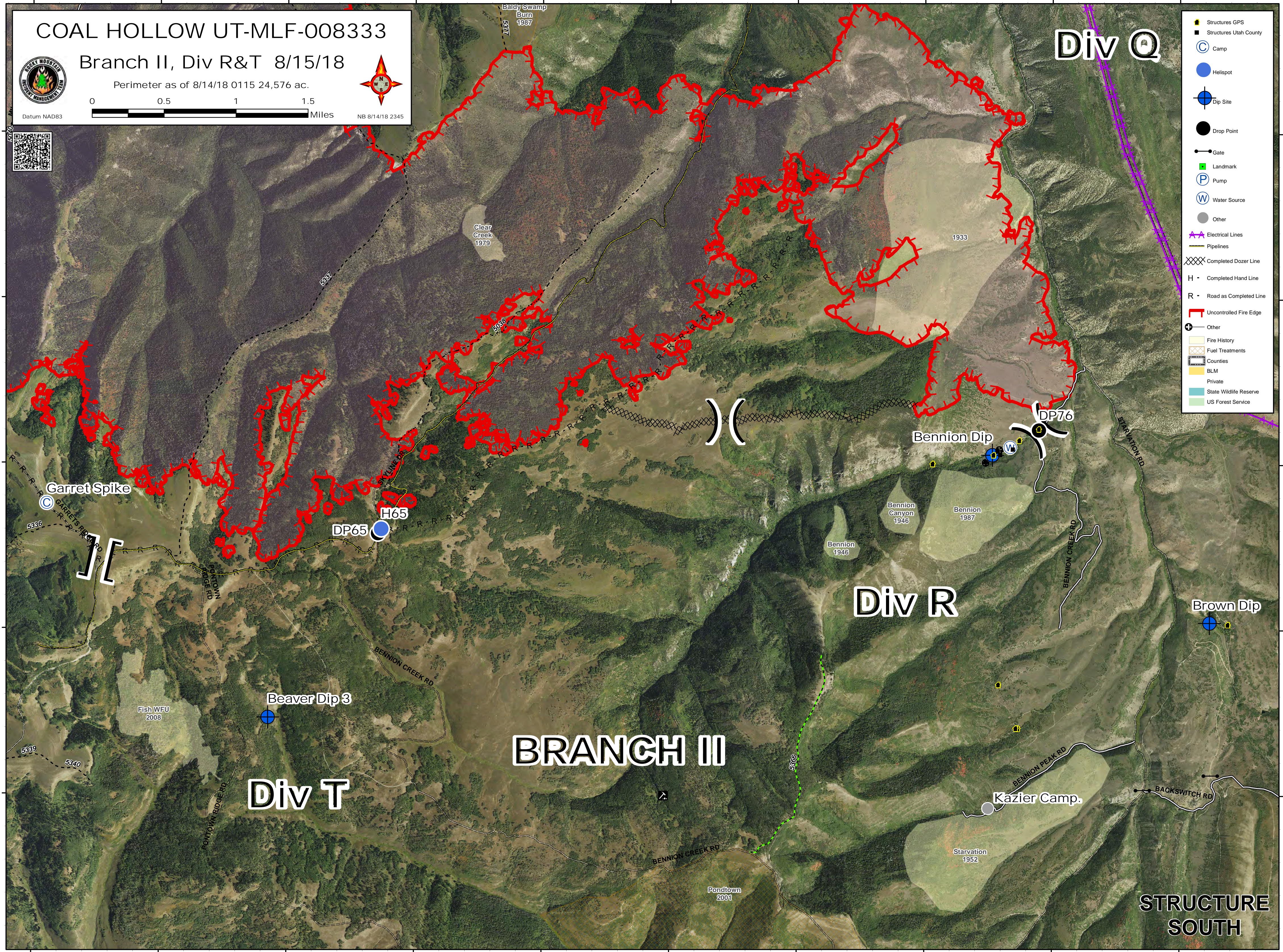
Datum NAD83

NB 8/14/18 2345



Div Q

- Structures GPS
- Structures Utah County
- Camp
- Helispot
- Dip Site
- Drop Point
- Gate
- Landmark
- Pump
- Water Source
- Other
- Electrical Lines
- Pipelines
- Completed Dozer Line
- Completed Hand Line
- Road as Completed Line
- Uncontrolled Fire Edge
- Other
- Fire History
- Fuel Treatments
- Counties
- BLM
- Private
- Slate Wildlife Reserve
- US Forest Service



BRANCH II

Div R

Div T

STRUCTURE SOUTH

39°54'N
39°53'N
39°52'N
39°51'N
39°50'N

39°54'N
39°53'N
39°52'N
39°51'N
39°50'N

111°20'W 111°19'W 111°18'W 111°17'W 111°16'W 111°15'W 111°14'W 111°13'W 111°12'W 111°11'W