

COAL HOLLOW UT-MLF-008333

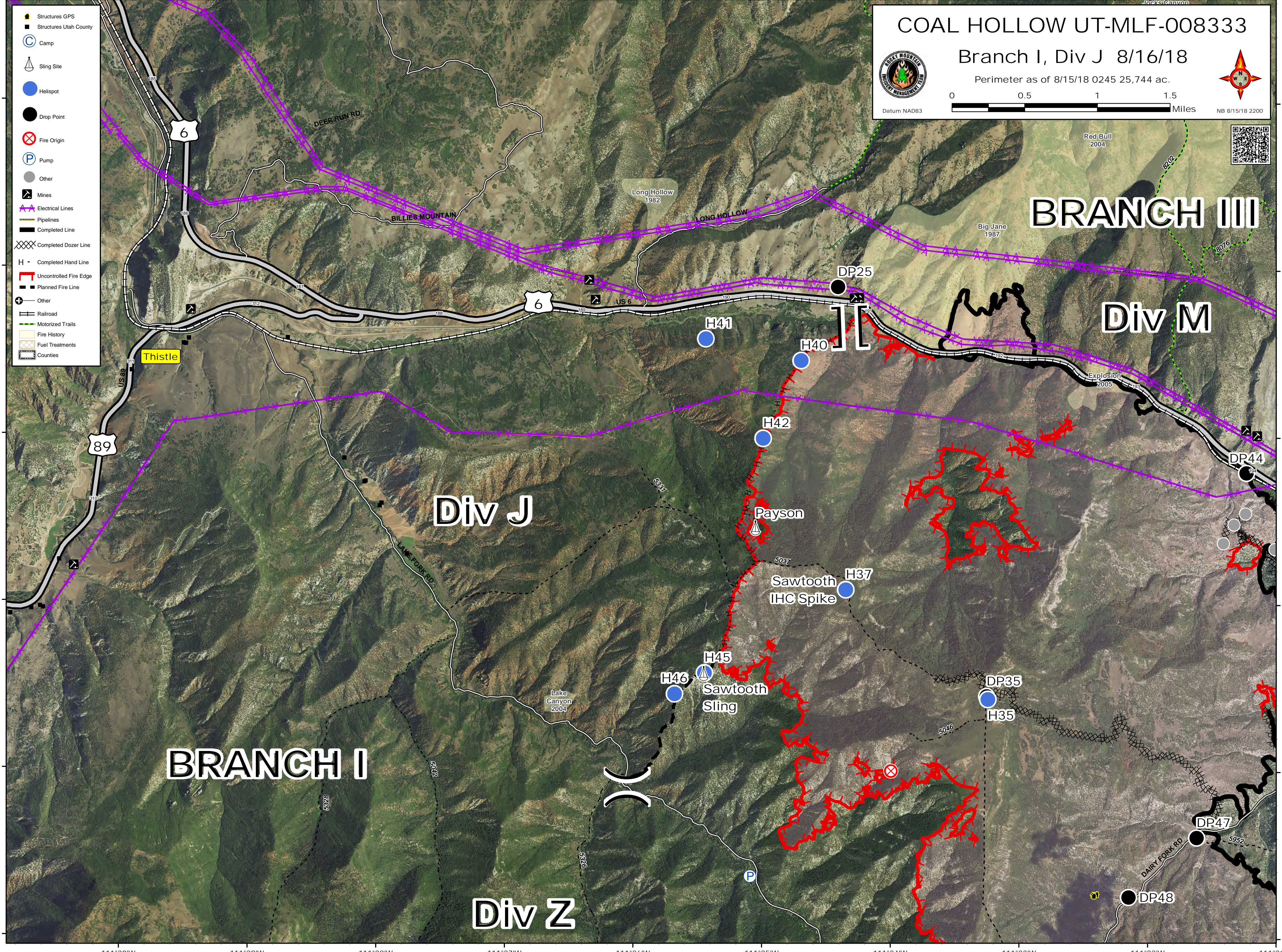
Branch I, Div J 8/16/18

Perimeter as of 8/15/18 0245 25,744 ac.



Datum NAD83

NB 8/15/18 2200



- Structures GPS
- Structures Utah County
- Camp
- Sling Site
- Helispot
- Drop Point
- Fire Origin
- Pump
- Other
- Mines
- Electrical Lines
- Pipelines
- Completed Line
- Completed Dozer Line
- Completed Hand Line
- Uncontrolled Fire Edge
- Planned Fire Line
- Railroad
- Motorized Trails
- Fire History
- Fuel Treatments
- Counties

BRANCH I

Div J

BRANCH III

Div M

Div Z

Thistle

Payson

Sawtooth
IHC Spike

Sawtooth
Sling

Red Bull
2004

Big Jane
1987

Long Hollow
1982

BILLIES MOUNTAIN

Explosion
2005

Lake Canyon
2004

DP47

DP48

DP25

DP44

DP35

H41

H40

H42

H37

H46

H45

H35

6

6

89

40°1'N

40°0'N

39°59'N

39°58'N

39°57'N

39°56'N

40°1'N

40°0'N

39°59'N

39°58'N

39°57'N

39°56'N

111°30'W

111°29'W

111°28'W

111°27'W

111°26'W

111°25'W

111°24'W

111°23'W

111°22'W

111°30'W

111°29'W

111°28'W

111°27'W

111°26'W

111°25'W

111°24'W

111°23'W

111°22'W

111°21'W