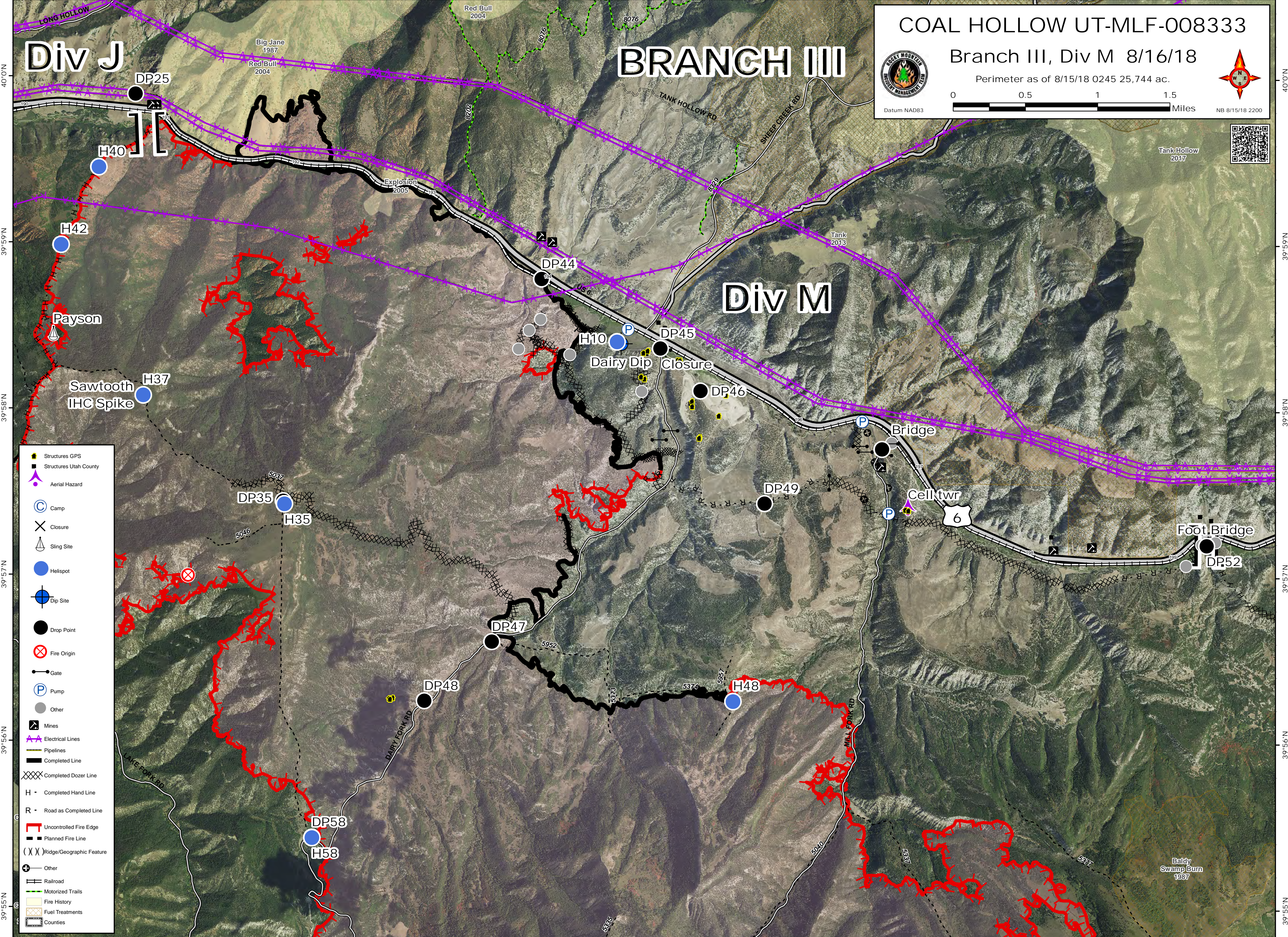


111°25'W 111°24'W 111°23'W 111°22'W 111°21'W 111°20'W 111°19'W 111°18'W 111°17'W 111°16'W



Div J

BRANCH III

Div M

COAL HOLLOW UT-MLF-008333

Branch III, Div M 8/16/18

Perimeter as of 8/15/18 0245 25,744 ac.



- Structures GPS
- Structures Utah County
- Aerial Hazard
- Camp
- Closure
- Sling Site
- Helispot
- Dip Site
- Drop Point
- Fire Origin
- Gate
- Pump
- Other
- Mines
- Electrical Lines
- Pipelines
- Completed Line
- Completed Dozer Line
- Completed Hand Line
- Road as Completed Line
- Uncontrolled Fire Edge
- Planned Fire Line
- Ridge/Geographic Feature
- Other
- Railroad
- Motorized Trails
- Fire History
- Fuel Treatments
- Counties

111°25'W 111°24'W 111°23'W 111°22'W 111°21'W 111°20'W 111°19'W 111°18'W 111°17'W 111°16'W

40°0'N
39°59'N
39°58'N
39°57'N
39°56'N
39°55'N

40°0'N
39°59'N
39°58'N
39°57'N
39°56'N
39°55'N