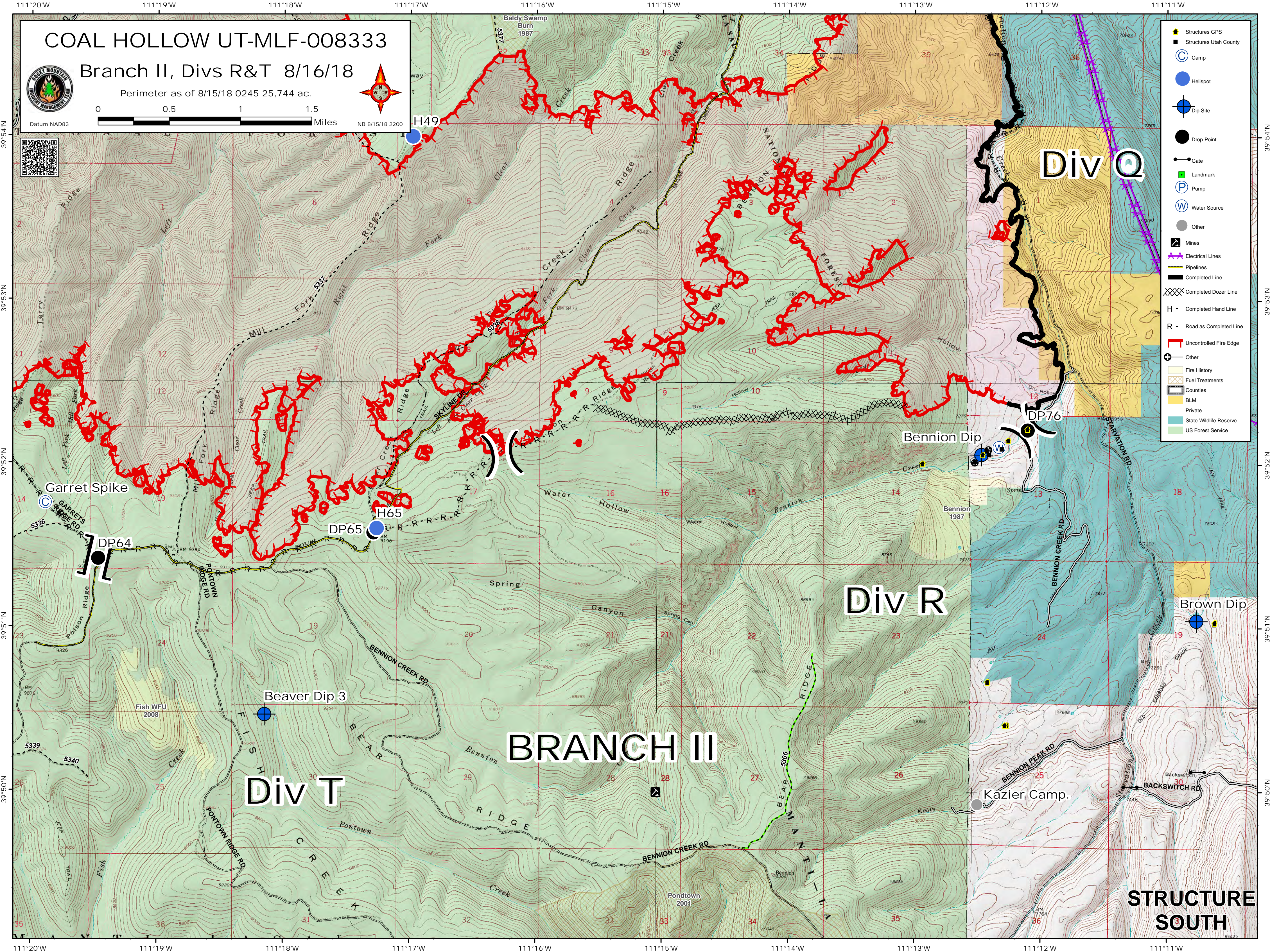


COAL HOLLOW UT-MLF-008333

Branch II, Divs R&T 8/16/18

Perimeter as of 8/15/18 0245 25,744 ac.



- Structures GPS
- Structures Utah County
- Camp
- Helispot
- Dip Site
- Drop Point
- Gate
- Landmark
- Pump
- Water Source
- Other
- Mines
- Electrical Lines
- Pipelines
- Completed Line
- Completed Dozer Line
- Completed Hand Line
- R - Road as Completed Line
- Uncontrolled Fire Edge
- Other
- Fire History
- Fuel Treatments
- Counties
- BLM
- Private
- State Wildlife Reserve
- US Forest Service

Div Q

Div R

Div T

BRANCH III

STRUCTURE SOUTH