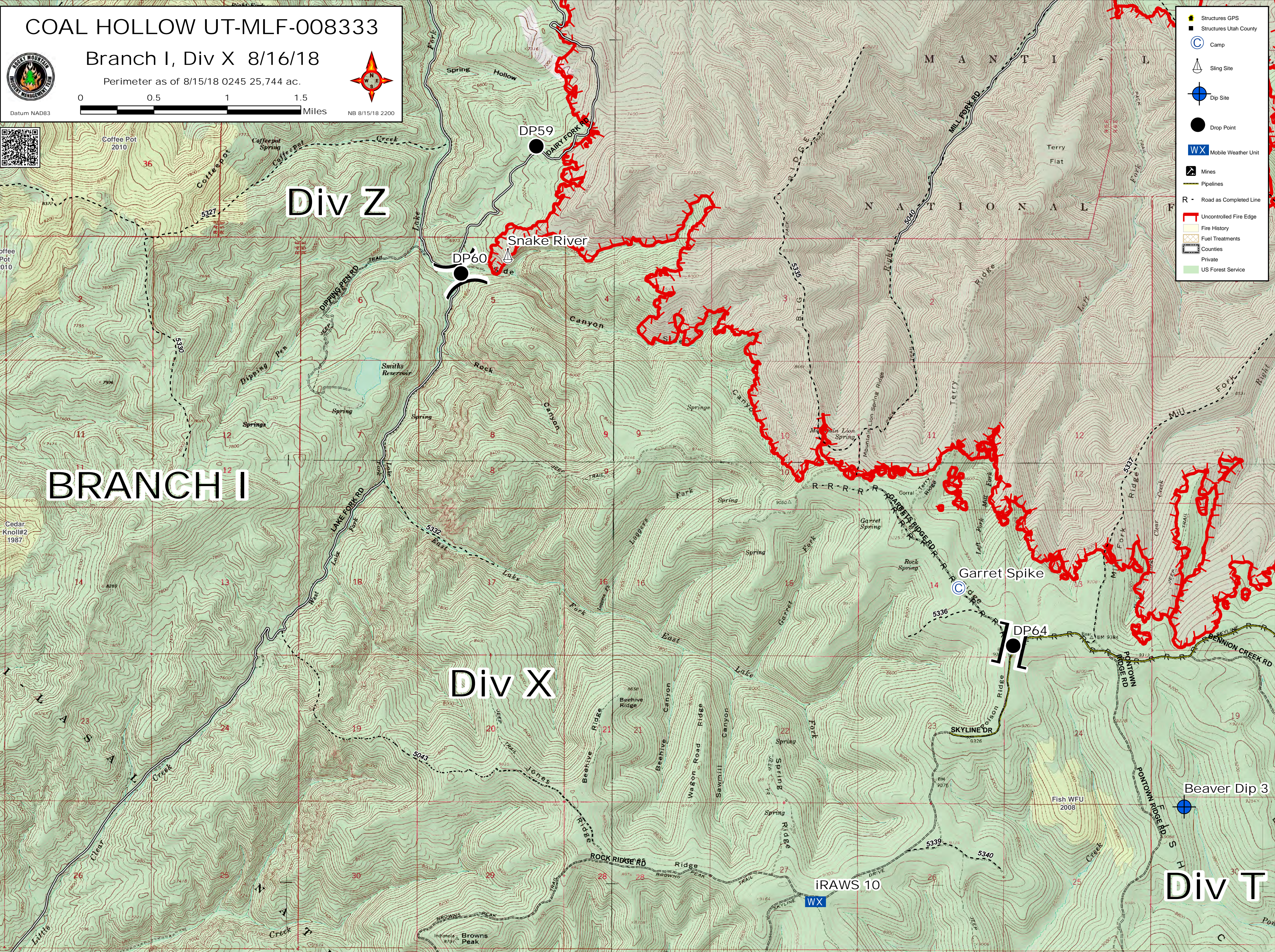


COAL HOLLOW UT-MLF-008333

Branch I, Div X 8/16/18

Perimeter as of 8/15/18 0245 25,744 ac.



- Structures GPS
- Structures Utah County
- Camp
- Sling Site
- Dip Site
- Drop Point
- WX Mobile Weather Unit
- Mines
- Pipelines
- R - Road as Completed Line
- Uncontrolled Fire Edge
- Fire History
- Fuel Treatments
- Counties
- Private
- US Forest Service

Div Z

BRANCH I

Div X

Div T

DP59

DP60

DP64

Garret Spike

Beaver Dip 3

iRAWS 10

WX