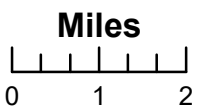
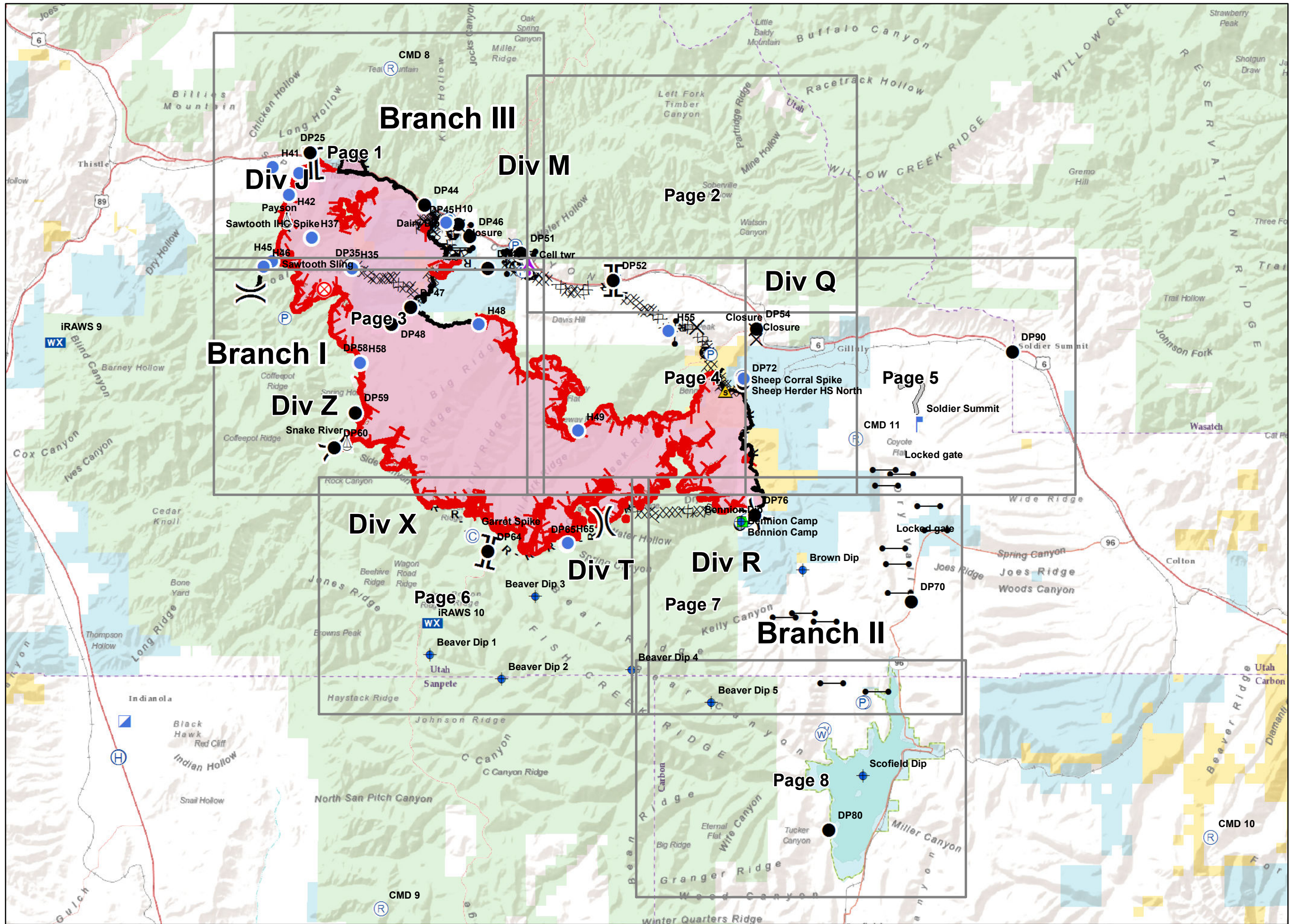


Coal Hollow Fire
UT-MLF-008333
8/16/2018
Perim. 8/15/18
0245 hrs
25,744 ac.
NAD 83

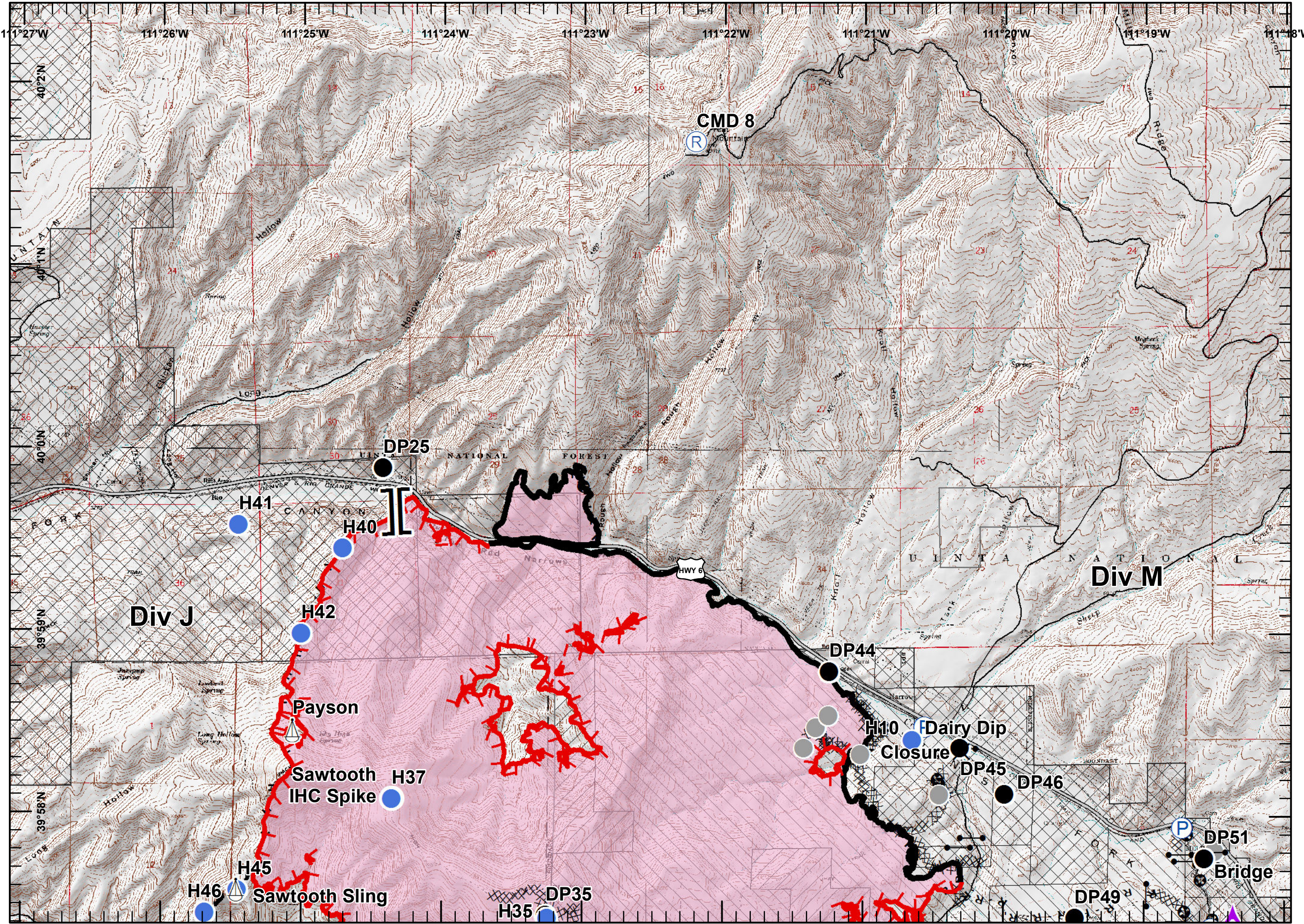
- Aerial Hazard
- Camp
- Closure
- Dip Site
- Drop Point
- Fire Origin
- Gate
- Helibase
- Helispot
- Incident Command Post
- Landmark
- Lookout
- Mobile Weather Unit
- Pump
- Repeater
- Safety Zone
- Sling Site
- Water Source
- Division Break
- Branch Break
- Uncontrolled Fire Edge
- Completed Line
- Completed Dozer Line
- H - Completed Hand Line
- R - Road as Completed Line
- Access or Improved Road
- Proposed Dozer Line
- Planned Fire Line
- BLM
- Private
- State
- US Forest Service



TSmith
 Aug. 15, 2018
 2144 Hours



Coal Hollow Fire
UT-MLF-008333
8/16/2018
Perim. 8/15/18
0245 hrs
25,744 ac.
NAD 83
Page 1

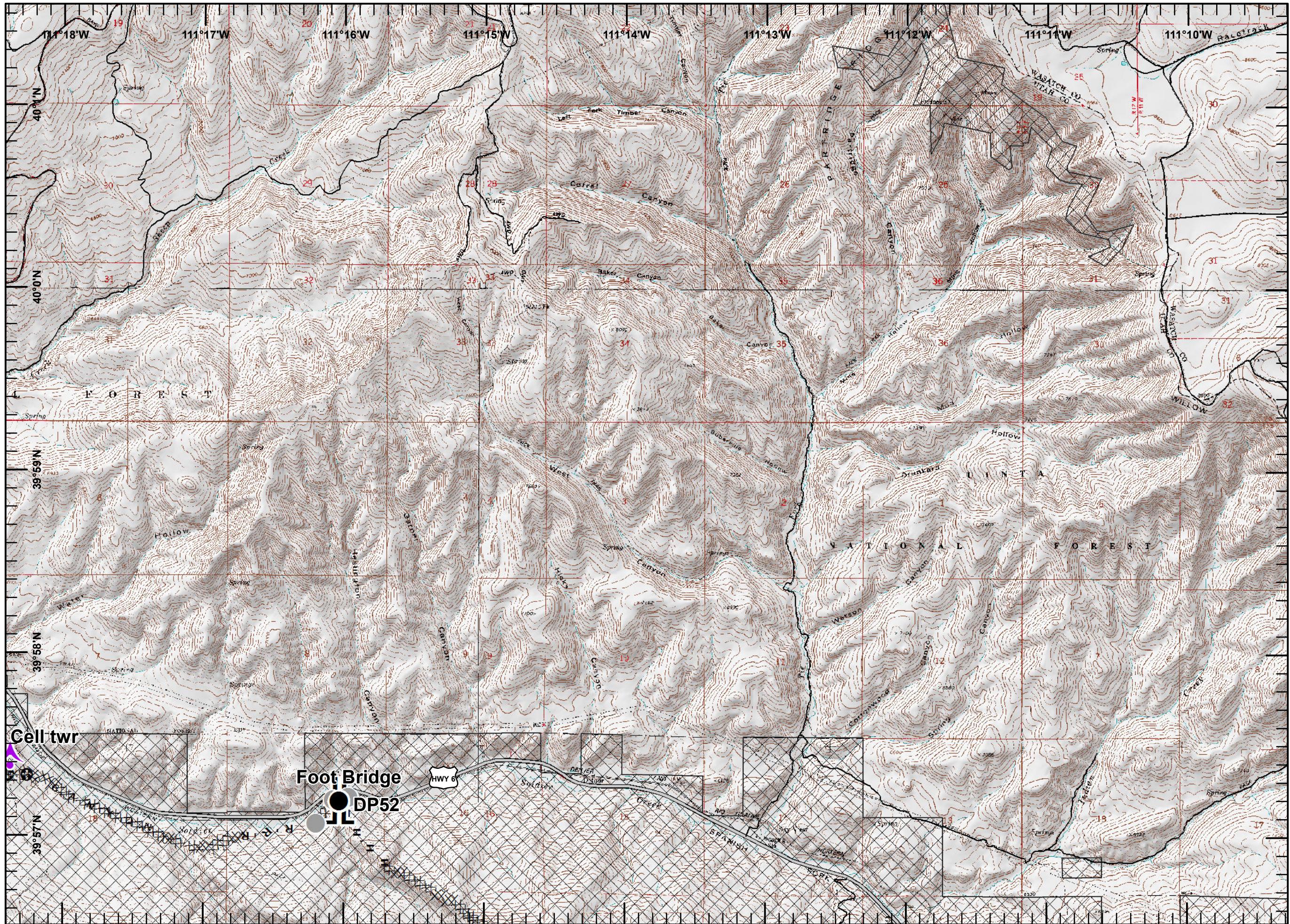


- Aerial Hazard
- Camp
- Closure
- Dip Site
- Drop Point
- Gate
- Helispot
- Pump
- Repeater
- Sling Site
- Other
- Branch Break
- Uncontrolled Fire Edge
- Completed Line
- Completed Dozer Line
- Completed Hand Line
- Road as Completed Line
- Planned Fire Line
- Wildfire Daily Fire Perimeter
- BLM
- Private
- State
- US Forest Service

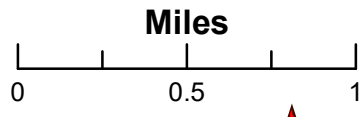
Miles
 0 0.5 1

TSmith
 Aug. 15, 2018
 1845 Hours

Coal Hollow Fire
UT-MLF-008333
8/16/2018
Perim. 8/15/18
0245 hrs
25,744 ac.
NAD 83
Page 2

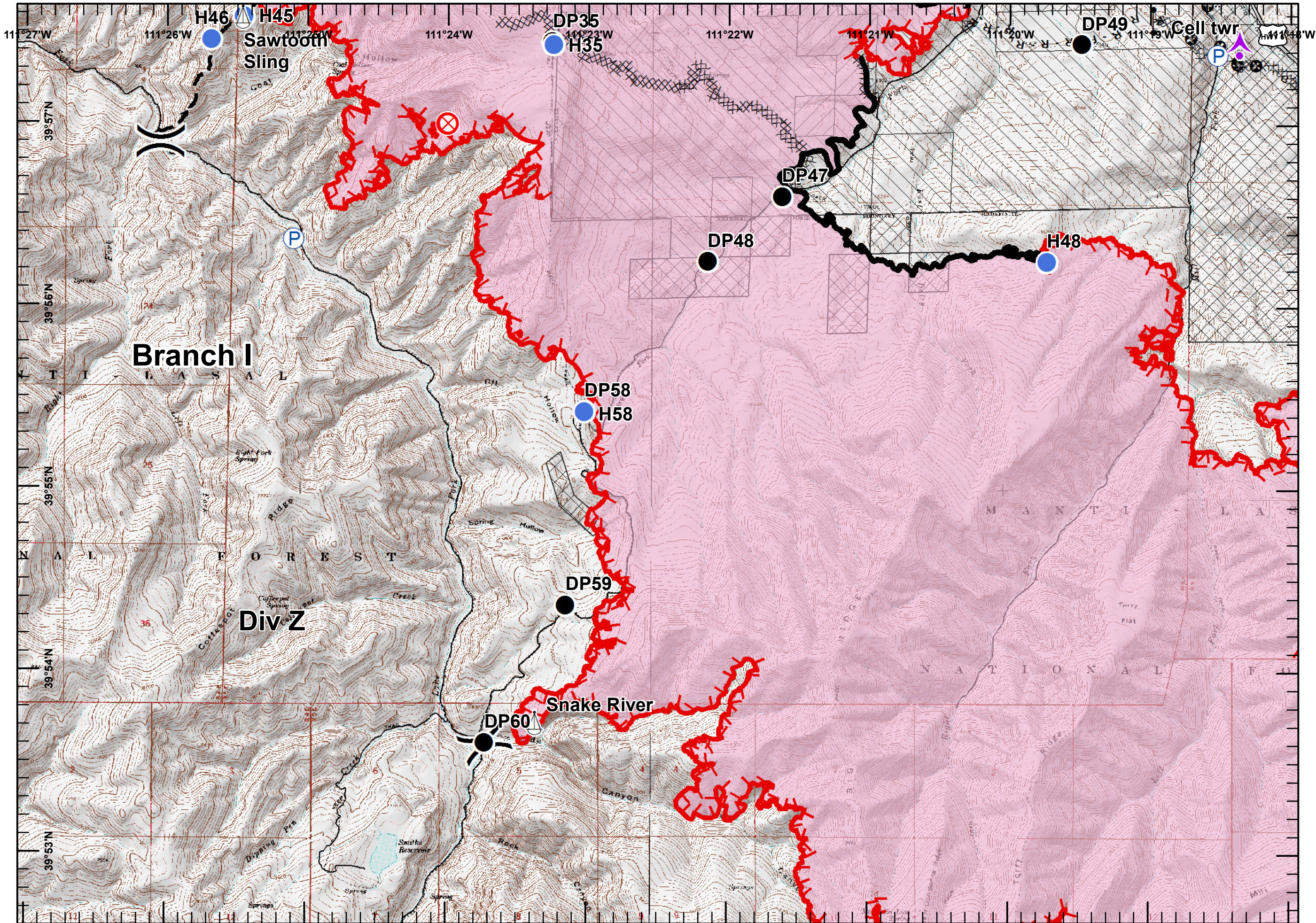


	Aerial Hazard
	Drop Point
	Other
	Branch Break
	Completed Dozer Line
	Completed Hand Line
	Road as Completed Line
	Private
	US Forest Service



TSmith
 Aug. 15, 2018
 1845 Hours

Coal Hollow Fire
 UT-MLF-008333
 8/16/2018
 Perim. 8/15/18
 0245 hrs
 25,744 ac.
 NAD 83
 Page 3

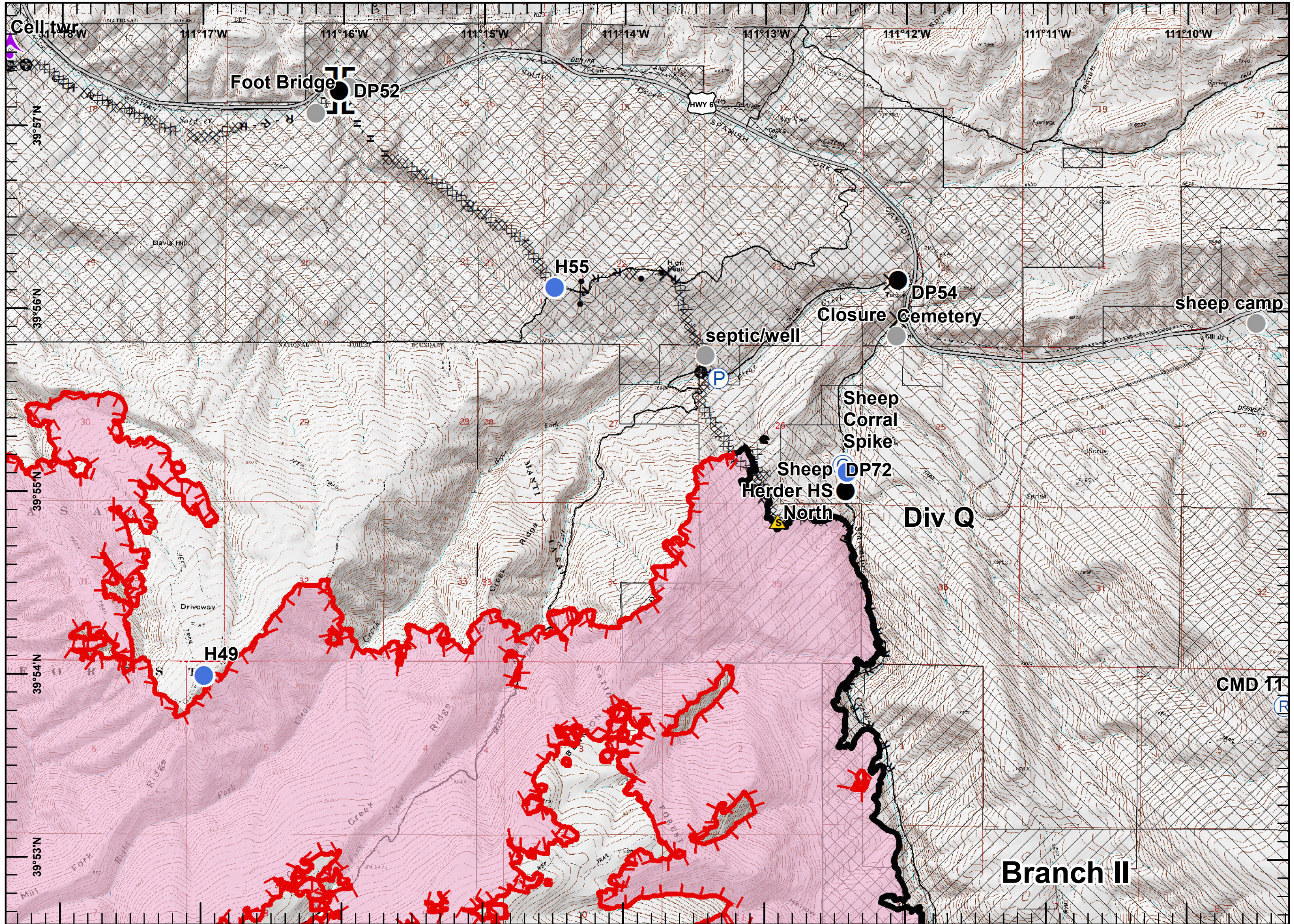


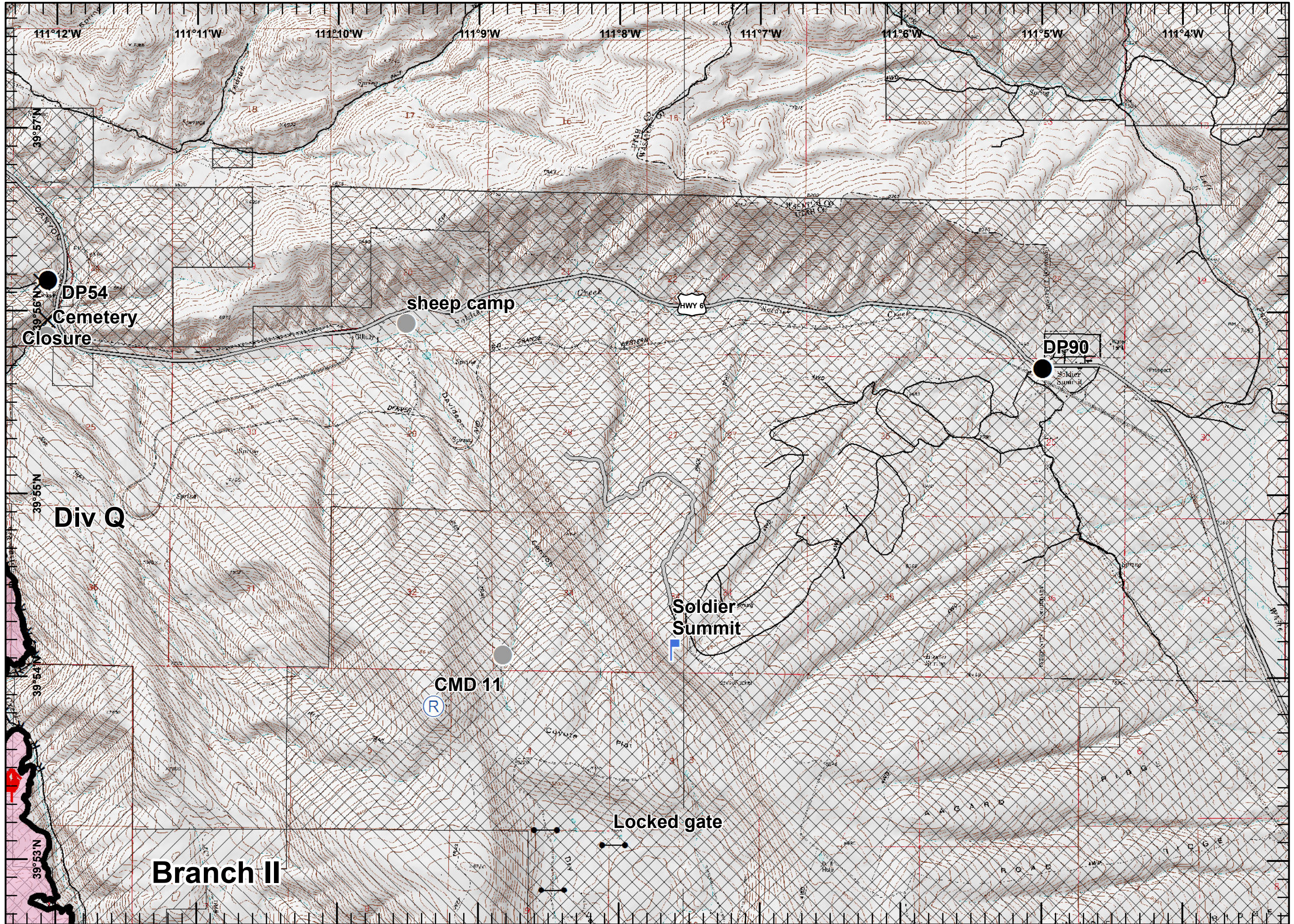
- Aerial Hazard
- Drop Point
- Fire Origin
- Gate
- Helispot
- Pump
- Sling Site
- Division Break
- Uncontrolled Fire Edge
- Completed Line
- Completed Dozer Line
- Completed Hand Line
- Road as Completed Line
- Planned Fire Line
- Wildfire Daily Fire Perimeter
- BLM
- Private
- State
- US Forest Service

Miles

0 0.5 1

TSmith
 Aug. 15, 2018
 1845 Hours



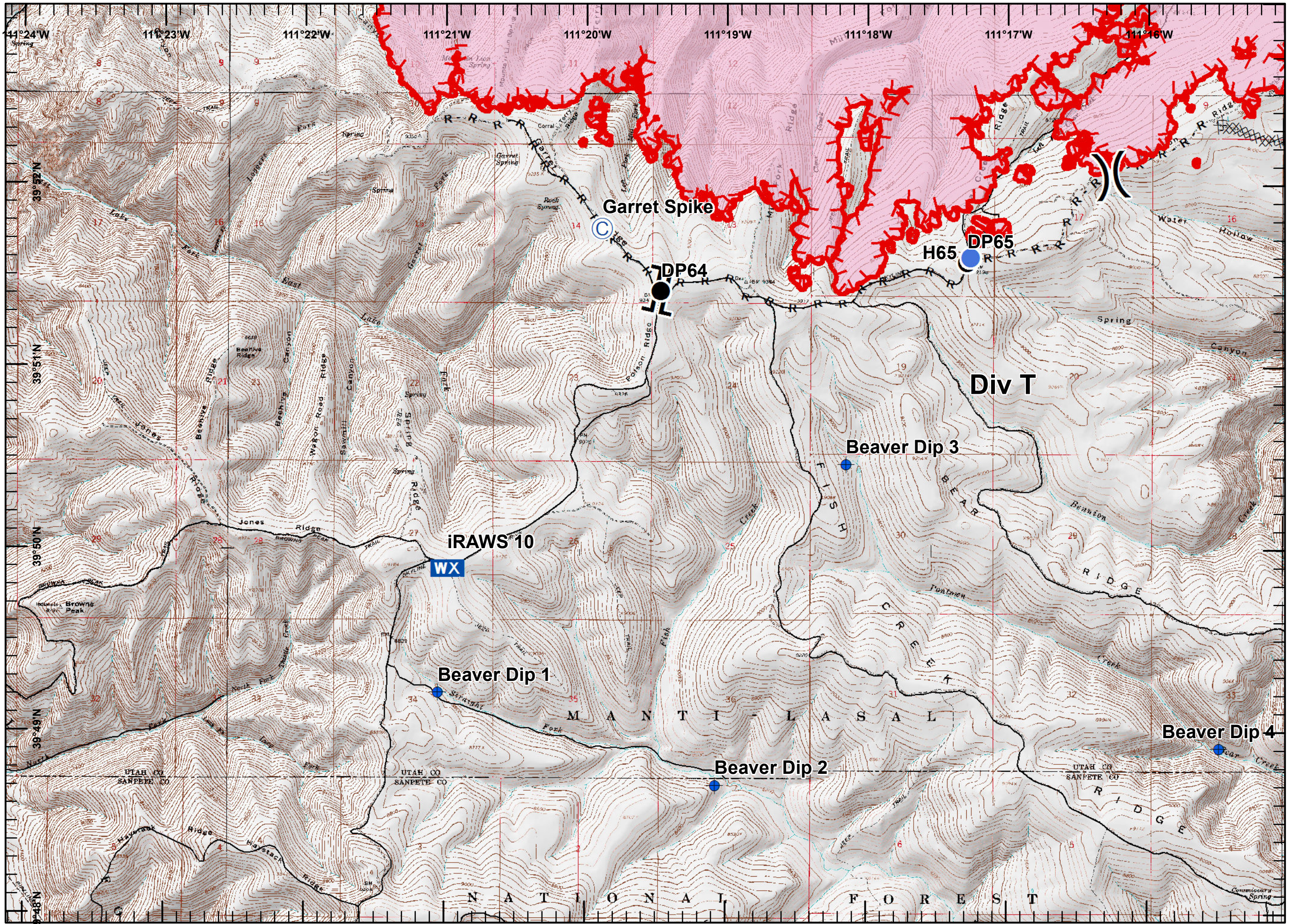


- ✕ Closure
- Drop Point
- Gate
- Helispot
- ⌚ Lookout
- Ⓡ Repeater
- Other
- ▬ Uncontrolled Fire Edge
- ▬ Completed Line
- R — Road as Completed Line
- ▬ Access or Improved Road
- 👤 Wildfire Daily Fire Perimeter
- ▨ BLM
- ▨ Private
- ▨ State
- ▨ US Forest Service

Miles
 0 0.5 1

TSmith
 Aug. 15, 2018
 1845 Hours

Coal Hollow Fire
 UT-MLF-008333
 8/16/2018
 Perim. 8/15/18
 0245 hrs
 25,744 ac.
 NAD 83
 Page 6



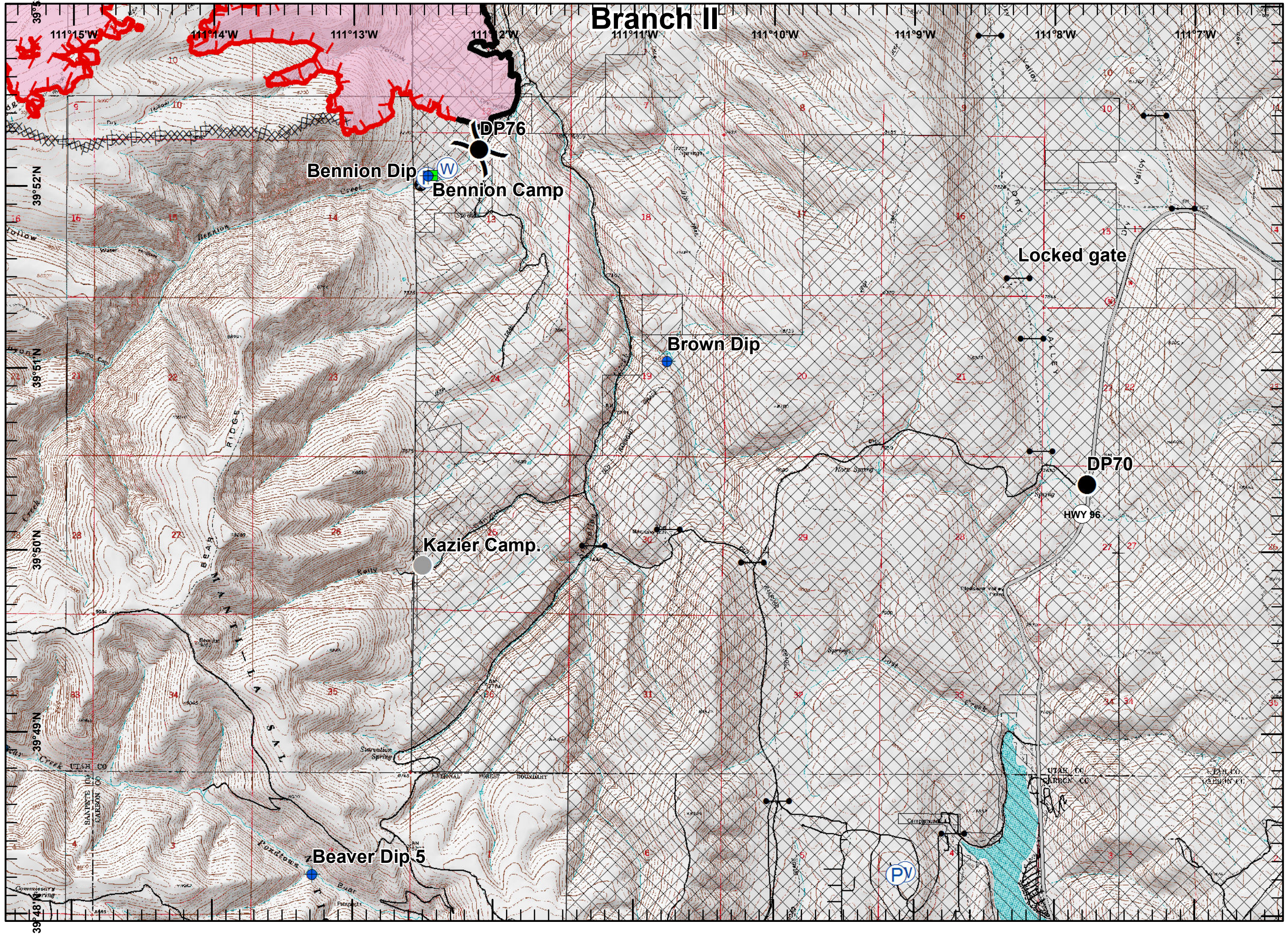
- Camp
- Dip Site
- Drop Point
- Helispot
- Mobile Weather Unit
- Division Break
- Branch Break
- Uncontrolled Fire Edge
- Completed Dozer Line
- Road as Completed Line
- Wildfire Daily Fire Perimeter
- US Forest Service

Miles

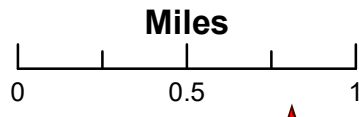
0 0.5 1

TSmith
 Aug. 15, 2018
 1845 Hours

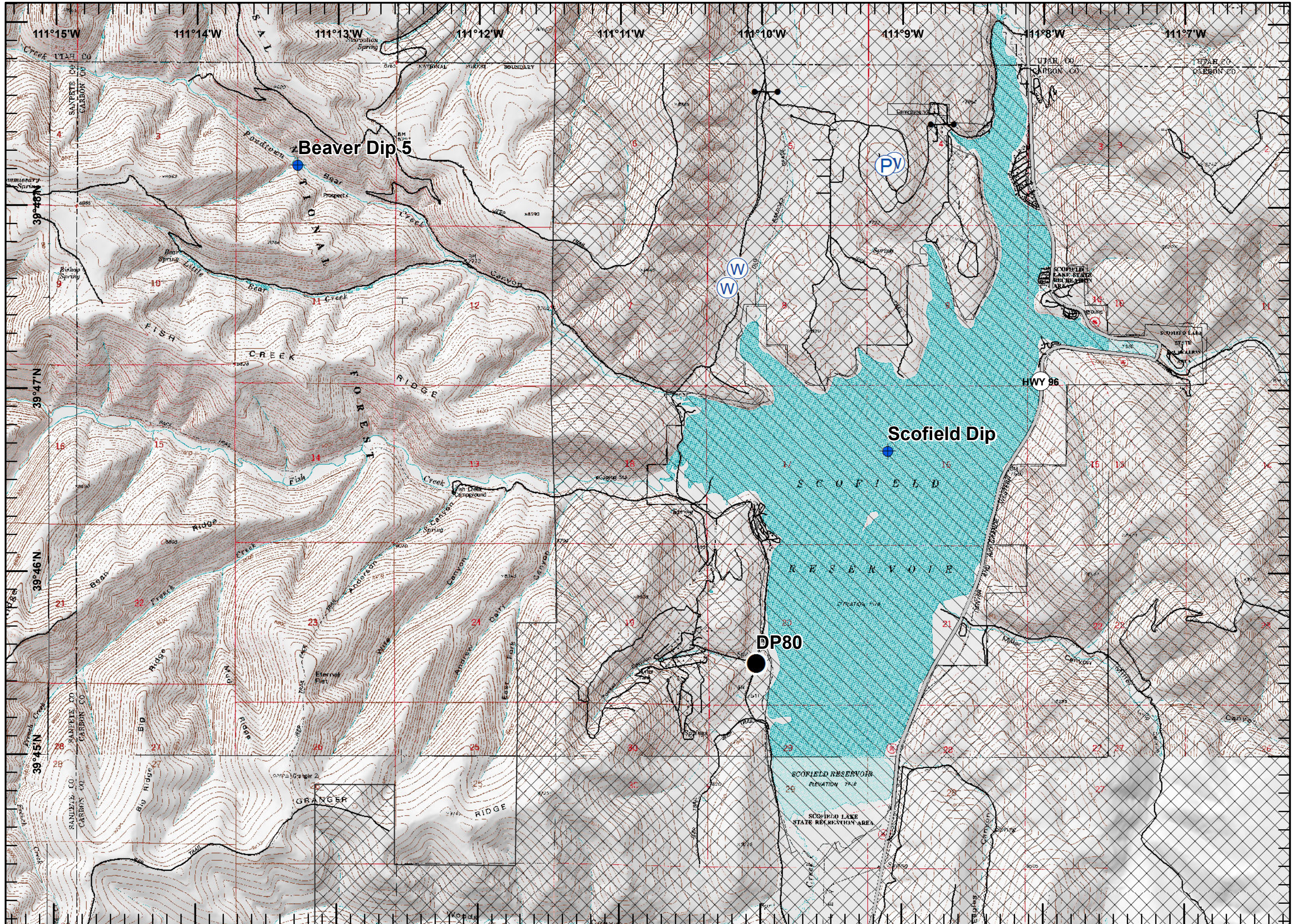
Coal Hollow Fire
 UT-MLF-008333
 8/16/2018
 Perim. 8/15/18
 0245 hrs
 25,744 ac.
 NAD 83
 Page 7



- Dip Site
- Drop Point
- Gate
- Landmark
- P Pump
- W Water Source
- Other
-) Division Break
- Uncontrolled Fire Edge
- Completed Line
- XXXX Completed Dozer Line
- H Completed Hand Line
- Wildfire Daily Fire Perimeter
- BLM
- Private
- State
- US Forest Service

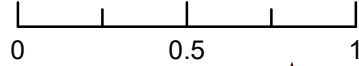


TSmith
 Aug. 15, 2018
 1845 Hours



- Dip Site
- Drop Point
- Gate
- Pump
- Water Source
- Private
- State
- US Forest Service

Miles



TSmith
 Aug. 15, 2018
 1845 Hours



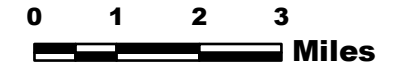
Spanish Fork

COAL HOLLOW UT-MLF-008333



Travel Map 8/16/18

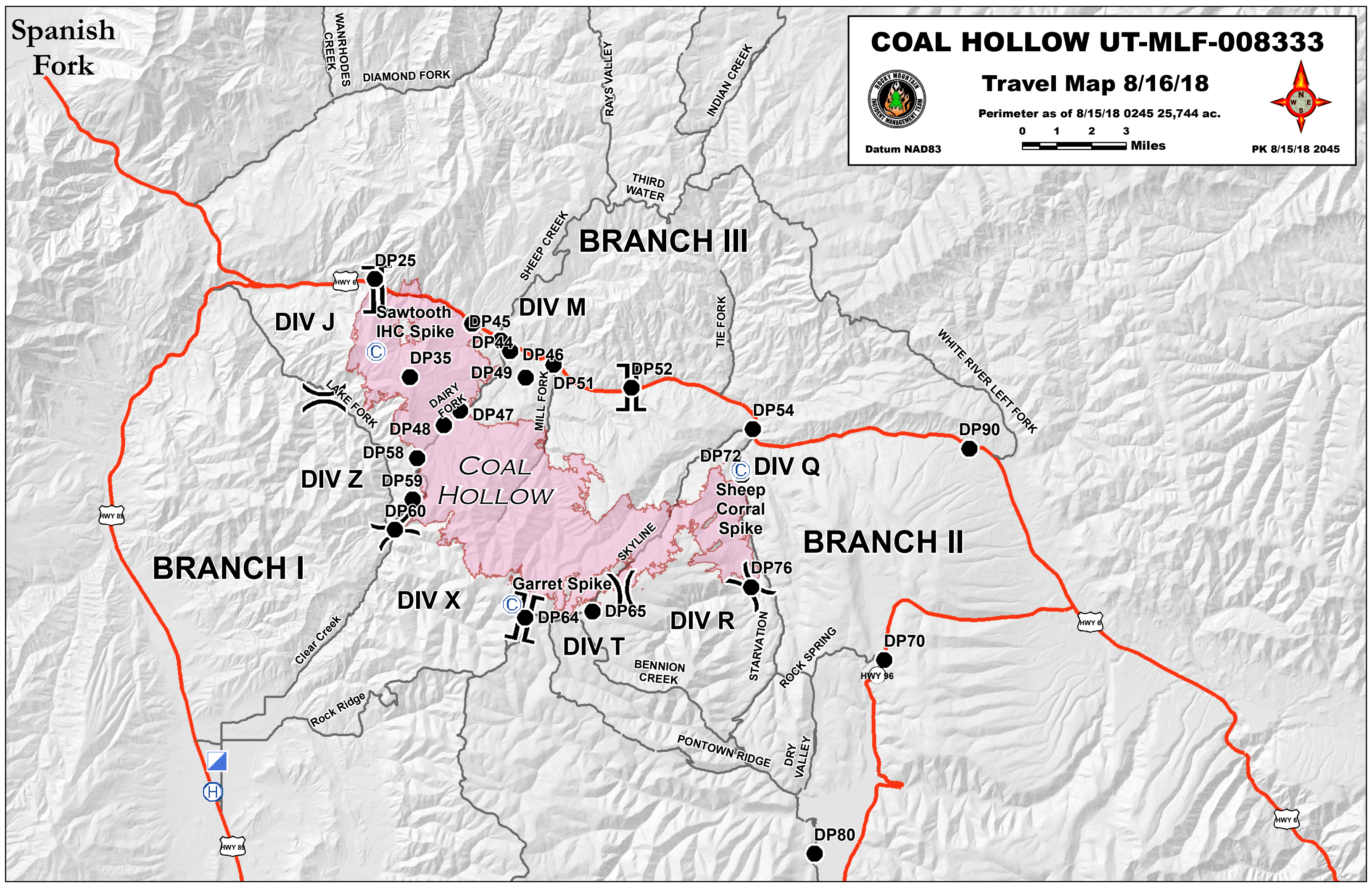
Perimeter as of 8/15/18 0245 25,744 ac.



Datum NAD83



PK 8/15/18 2045



WANRHODES CREEK

DIAMOND FORK

RAY'S VALLEY

INDIAN CREEK

THIRD WATER

BRANCH III

SHEEP CREEK

TIE FORK

WHITE RIVER LEFT FORK

DIV J

DP25

Sawtooth IHC Spike

DIV M

DP45

DP44

DP35

DP49

DAIRY FORK

DP46

DP47

DP48

DP58

DP59

DP60

DP64

DP65

Garret Spike

DP51

DP52

DP54

DP72

SKYLINE

DP76

DP64

DP65

DP70

DP76

DP80

DP90

DP90

DP90

DP90

DP90

DP90

DP90

DP90

DP90

LAKE FORK

DIV Z

COAL HOLLOW

DIV Q

Sheep Corral Spike

BRANCH II

BRANCH I

DIV X

DIV R

DIV T

BENNION CREEK

STARVATION

ROCK SPRING

Clear Creek

Rock Ridge

PONTOWN RIDGE

DRY VALLEY



HWY 89

HWY 89

HWY 6

HWY 96

HWY 6