

# COAL HOLLOW UT-MLF-008333

## Branch II, Divs R&T 8/16/18

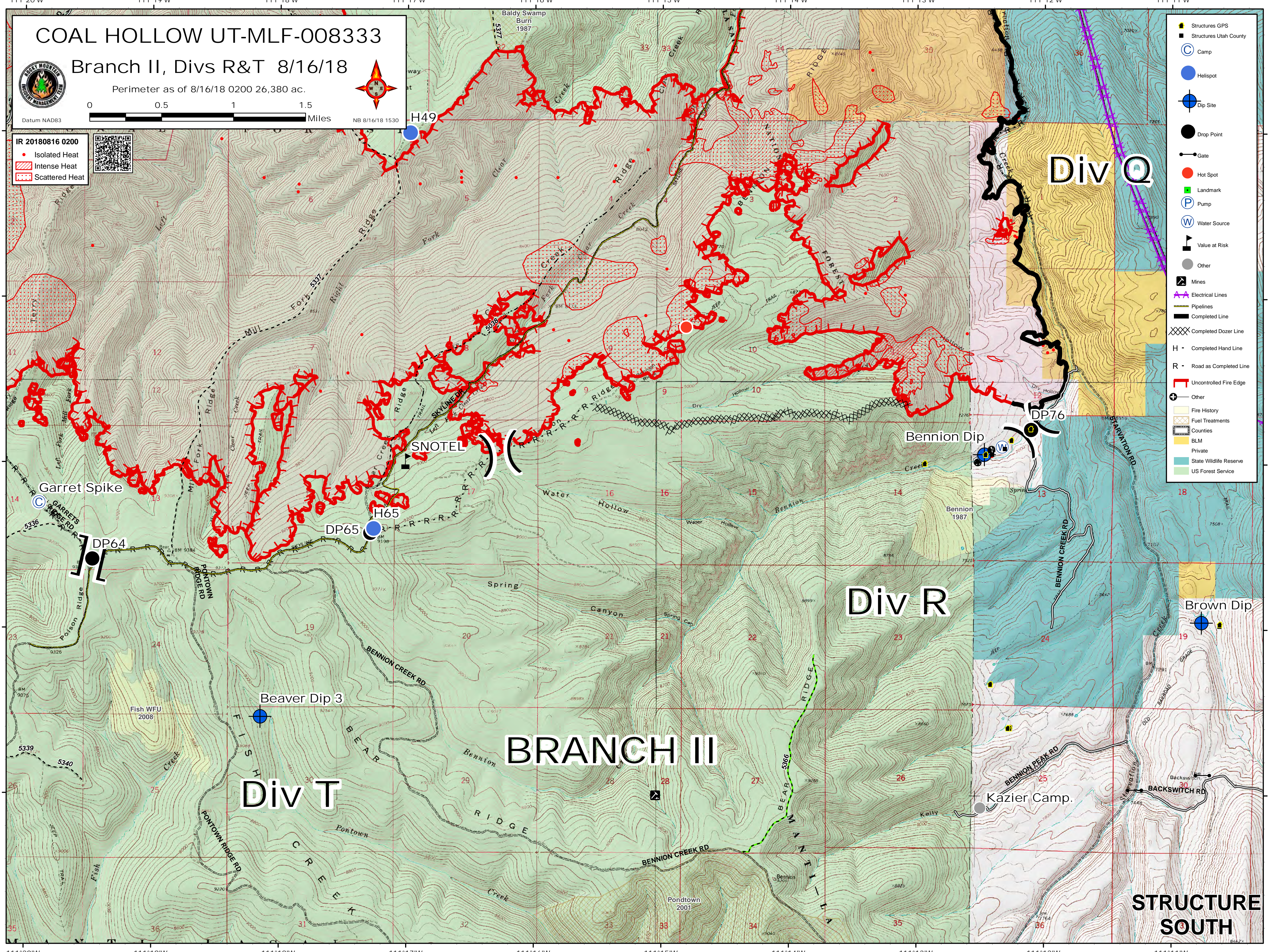
Perimeter as of 8/16/18 0200 26,380 ac.



**IR 20180816 0200**

- Isolated Heat
- Intense Heat
- Scattered Heat

- Structures GPS
- Structures Utah County
- Camp
- Helispot
- Dip Site
- Drop Point
- Gate
- Hot Spot
- Landmark
- Pump
- Water Source
- Value at Risk
- Other
- Mines
- Electrical Lines
- Pipelines
- Completed Line
- Completed Dozer Line
- Completed Hand Line
- R - Road as Completed Line
- Uncontrolled Fire Edge
- Other
- Fire History
- Fuel Treatments
- Counties
- BLM
- Private
- State Wildlife Reserve
- US Forest Service



### Div Q

### Div R

### BRANCH III

### Div T

### STRUCTURE SOUTH