

COAL HOLLOW UT-MLF-008333

Air Operations 8/19/18

Perimeter as of 8/18/18 1600 @ 29,651 ac.

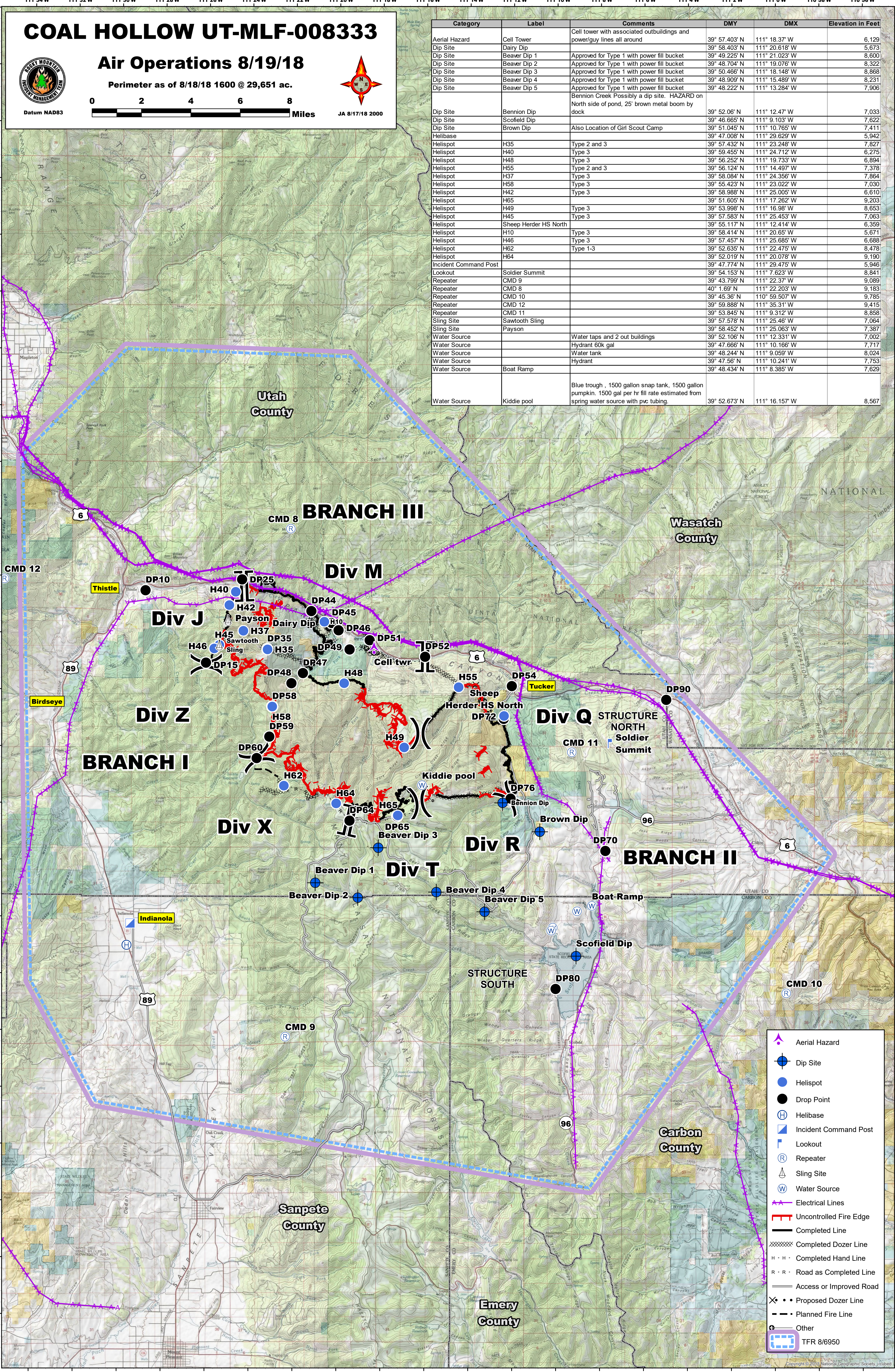


Datum NAD83



JA 8/17/18 2000

Category	Label	Comments	DMY	DMX	Elevation in Feet
Aerial Hazard	Cell Tower	Cell tower with associated outbuildings and power/guy lines all around	39° 57.403' N	111° 18.37' W	6,129
Dip Site	Dairy Dip		39° 58.403' N	111° 20.618' W	5,673
Dip Site	Beaver Dip 1	Approved for Type 1 with power fill bucket	39° 49.225' N	111° 21.023' W	8,600
Dip Site	Beaver Dip 2	Approved for Type 1 with power fill bucket	39° 48.704' N	111° 19.076' W	8,322
Dip Site	Beaver Dip 3	Approved for Type 1 with power fill bucket	39° 50.466' N	111° 18.148' W	8,868
Dip Site	Beaver Dip 4	Approved for Type 1 with power fill bucket	39° 48.909' N	111° 15.489' W	8,231
Dip Site	Beaver Dip 5	Approved for Type 1 with power fill bucket	39° 48.222' N	111° 13.284' W	7,906
Dip Site	Bennion Dip	Bennion Creek Possibly a dip site. HAZARD on North side of pond, 25' brown metal boom by dock	39° 52.06' N	111° 12.47' W	7,033
Dip Site	Scofield Dip		39° 46.665' N	111° 9.103' W	7,622
Dip Site	Brown Dip	Also Location of Girl Scout Camp	39° 51.045' N	111° 10.765' W	7,411
Helibase			39° 47.008' N	111° 29.629' W	5,942
Helispot	H35	Type 2 and 3	39° 57.432' N	111° 23.248' W	7,827
Helispot	H40	Type 3	39° 59.455' N	111° 24.712' W	6,275
Helispot	H48	Type 3	39° 56.252' N	111° 19.733' W	6,894
Helispot	H55	Type 2 and 3	39° 56.124' N	111° 14.497' W	7,378
Helispot	H37	Type 3	39° 58.084' N	111° 24.356' W	7,864
Helispot	H58	Type 3	39° 55.423' N	111° 23.022' W	7,030
Helispot	H42	Type 3	39° 58.988' N	111° 25.005' W	6,610
Helispot	H65	Type 3	39° 51.605' N	111° 17.262' W	9,203
Helispot	H49	Type 3	39° 53.998' N	111° 16.98' W	8,653
Helispot	H45	Type 3	39° 57.583' N	111° 25.453' W	7,063
Helispot	Sheep Herder HS North		39° 55.117' N	111° 12.414' W	6,359
Helispot	H10	Type 3	39° 58.414' N	111° 20.65' W	5,671
Helispot	H46	Type 3	39° 57.457' N	111° 25.685' W	6,688
Helispot	H62	Type 1-3	39° 52.635' N	111° 22.475' W	8,478
Helispot	H64	Type 1-3	39° 52.019' N	111° 20.078' W	9,190
Incident Command Post			39° 47.774' N	111° 29.475' W	5,946
Lookout	Soldier Summit		39° 54.153' N	111° 7.623' W	8,841
Repeater	CMD 9		39° 43.799' N	111° 22.37' W	9,089
Repeater	CMD 8		40° 1.69' N	111° 22.203' W	9,183
Repeater	CMD 10		39° 45.36' N	110° 59.507' W	9,785
Repeater	CMD 12		39° 59.888' N	111° 35.31' W	9,415
Repeater	CMD 11		39° 53.845' N	111° 9.312' W	8,858
Sling Site	Sawtooth Sling		39° 57.578' N	111° 25.46' W	7,064
Sling Site	Payson		39° 58.452' N	111° 25.063' W	7,387
Water Source		Water taps and 2 out buildings	39° 52.106' N	111° 12.331' W	7,002
Water Source		Hydrant 60k gal	39° 47.666' N	111° 10.166' W	7,717
Water Source		Water tank	39° 48.244' N	111° 9.059' W	8,024
Water Source		Hydrant	39° 47.56' N	111° 10.241' W	7,753
Water Source	Boat Ramp		39° 48.434' N	111° 8.385' W	7,629
Water Source	Kiddie pool	Blue trough , 1500 gallon snap tank, 1500 gallon pumpkin. 1500 gal per hr fill rate estimated from spring water source with pvc tubing.	39° 52.673' N	111° 16.157' W	8,567



- Aerial Hazard
- Dip Site
- Helispot
- Drop Point
- Helibase
- Incident Command Post
- Lookout
- Repeater
- Sling Site
- Water Source
- Electrical Lines
- Uncontrolled Fire Edge
- Completed Line
- Completed Dozer Line
- Completed Hand Line
- Road as Completed Line
- Access or Improved Road
- Proposed Dozer Line
- Planned Fire Line
- Other
- TFR 8/6950