

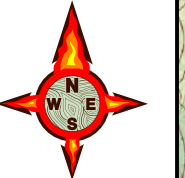
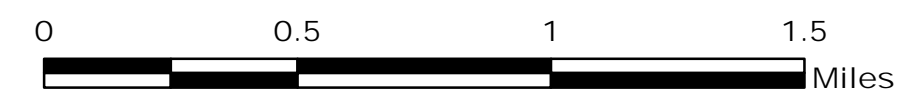
# COAL HOLLOW UT-MLF-008333

Branch I, Div J 8/19/18

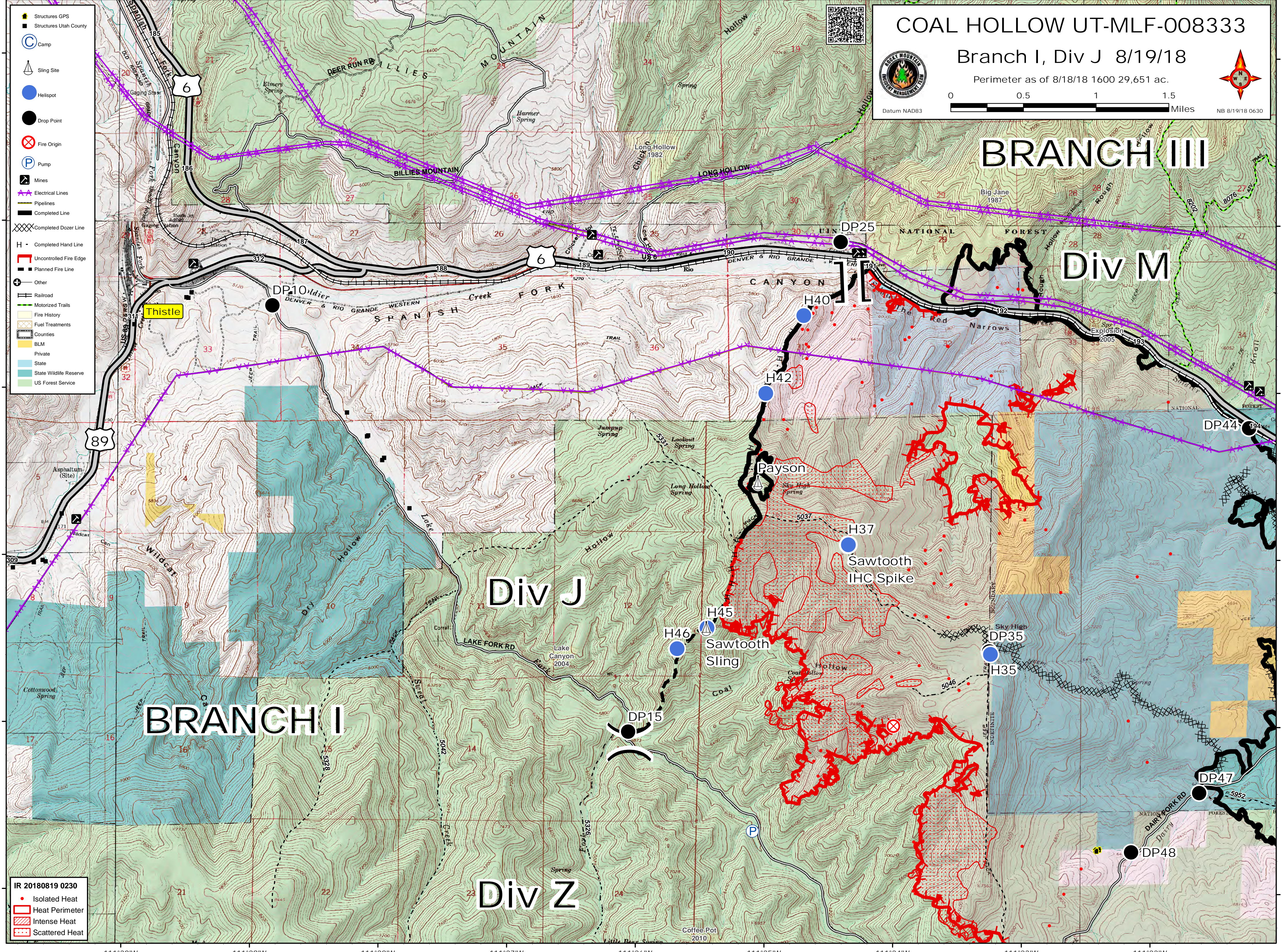
Perimeter as of 8/18/18 1600 29,651 ac.



Datum NAD83



NB 8/19/18 0630



- Structures GPS
- Structures Utah County
- Camp
- Sling Site
- Helispot
- Drop Point
- Fire Origin
- Pump
- Mines
- Electrical Lines
- Pipelines
- Completed Line
- Completed Dozer Line
- Completed Hand Line
- Uncontrolled Fire Edge
- Planned Fire Line
- Other
- Railroad
- Motorized Trails
- Fire History
- Fuel Treatments
- Counties
- BLM
- Private
- State
- State Wildlife Reserve
- US Forest Service

- IR 20180819 0230
- Isolated Heat
  - Heat Perimeter
  - Intense Heat
  - Scattered Heat

## BRANCH IIII

## Div M

## Div J

## BRANCH I

## Div Z

Thistle

Payson

Sawtooth IHC Spike

Sawtooth Sling

40°1'N  
40°0'N  
39°59'N  
39°58'N  
39°57'N  
39°56'N

111°30'W 111°29'W 111°28'W 111°27'W 111°26'W 111°25'W 111°24'W 111°23'W 111°22'W

111°30'W 111°29'W 111°28'W 111°27'W 111°26'W 111°25'W 111°24'W 111°23'W 111°22'W