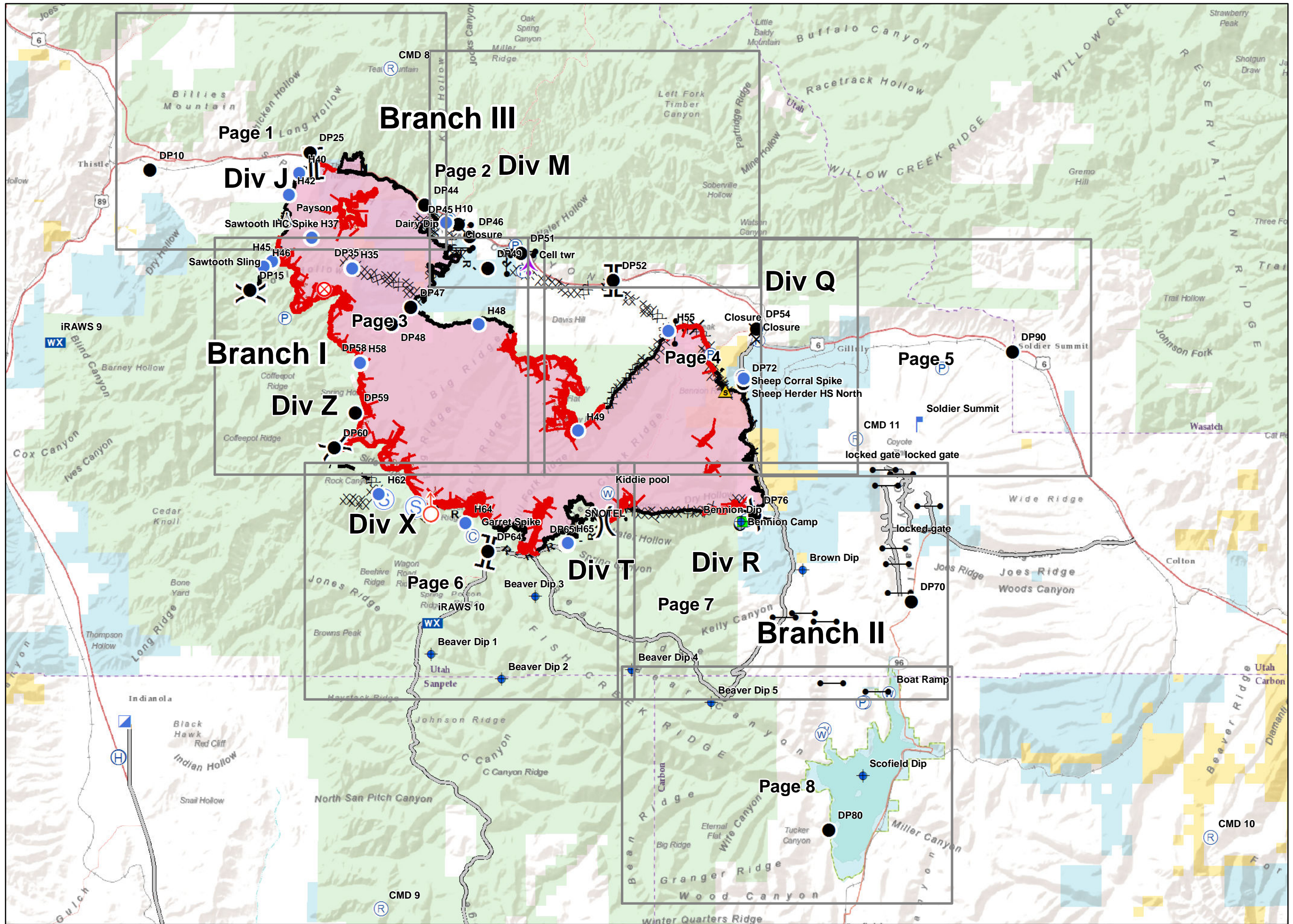
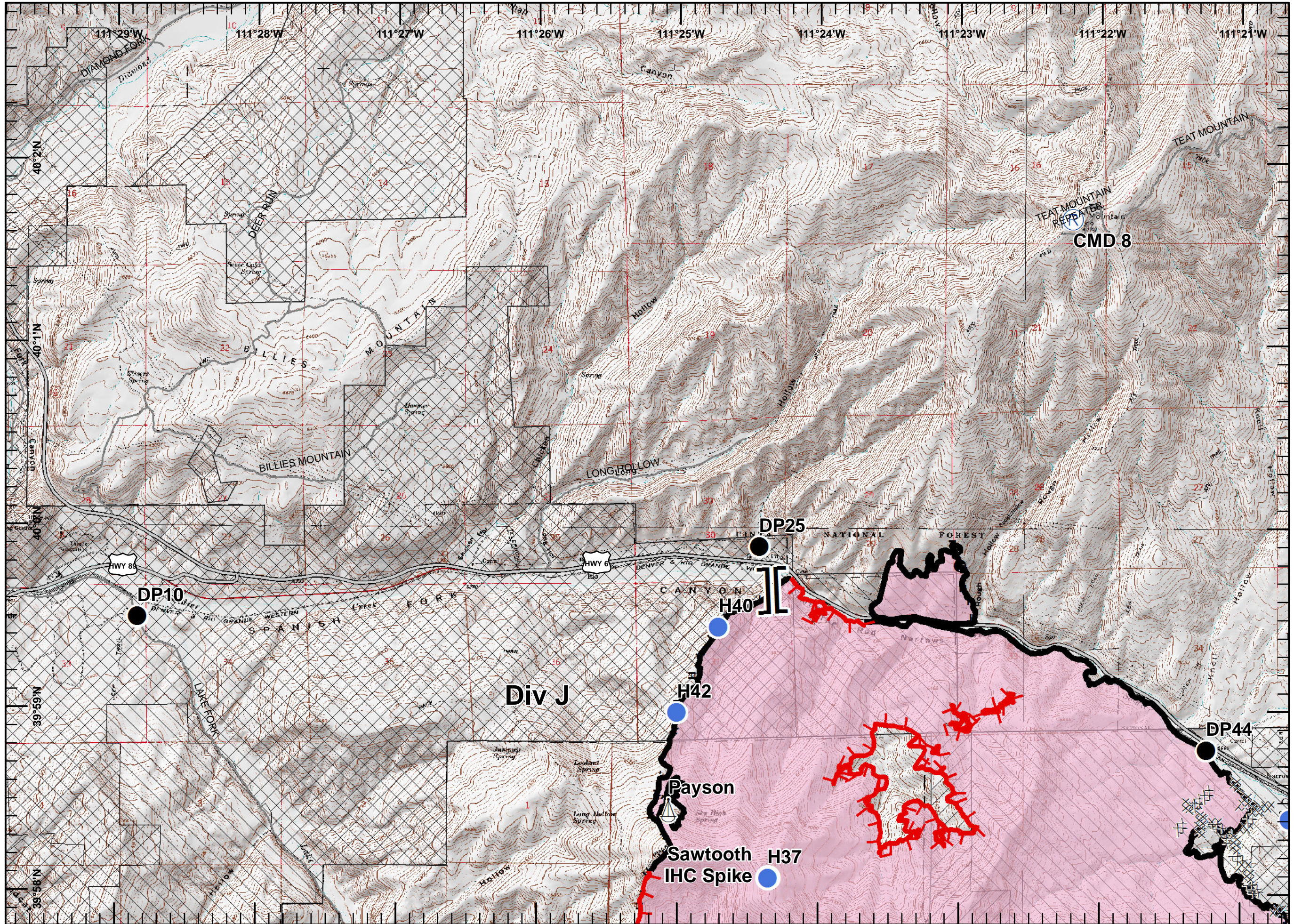


Coal Hollow Fire
UT-MLF-008333
8/19/2018
Perim. 8/18/18
1600 hrs
29,651 ac.
NAD 83

- Aerial Hazard
- Camp
- Closure
- Dip Site
- Drop Point
- Fire Origin
- Gate
- Helibase
- Helispot
- Incident Command Post
- Landmark
- Lookout
- Mobile Weather Unit
- Pump
- Repeater
- Safety Zone
- Sling Site
- Spot Fire
- Staging Area
- Water Source
- Value at Risk
- Division Break
- Branch Break
- Uncontrolled Fire Edge
- Completed Line
- Completed Dozer Line
- H - Completed Hand Line
- R - Road as Completed Line
- Access or Improved Road
- X • Proposed Dozer Line
- Planned Fire Line
- BLM
- Private
- State
- US Forest Service



Coal Hollow Fire
 UT-MLF-008333
 8/19/2018
 Perim. 8/18/18
 1600 hrs
 29,651 ac.
 NAD 83
 Page 1

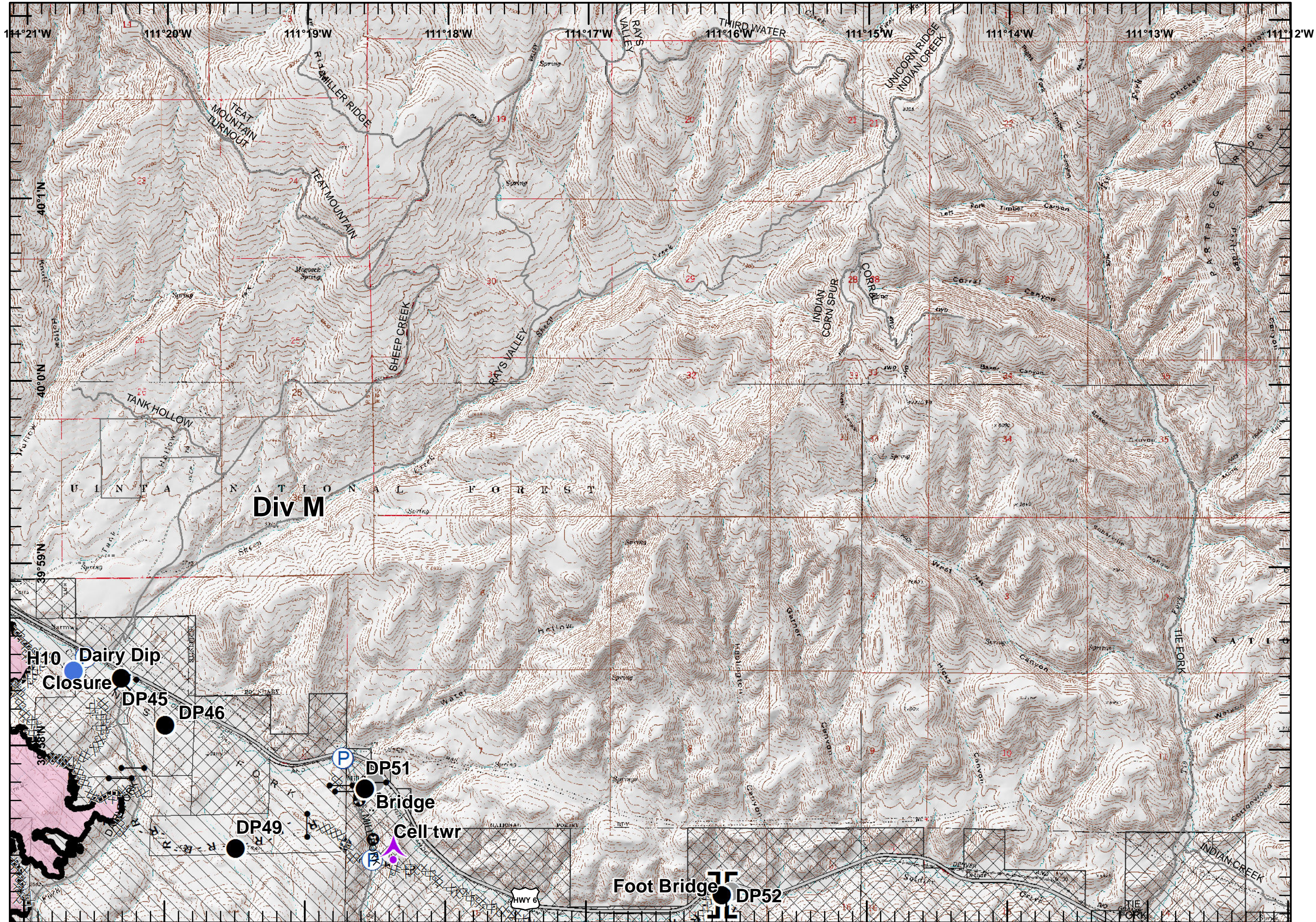


- Camp
- Dip Site
- Drop Point
- Helispot
- Repeater
- Sling Site
- Branch Break
- Uncontrolled Fire Edge
- Completed Line
- Completed Dozer Line
- Completed Hand Line
- Wildfire Daily Fire Perimeter
- BLM
- Private
- State
- US Forest Service

Miles

0 0.5 1

TSmith
 Aug. 18, 2018
 2034 Hours



- Aerial Hazard
- Closure
- Dip Site
- Drop Point
- Gate
- Helispot
- Pump
- Other
- Branch Break
- Completed Line
- Completed Dozer Line
- Completed Hand Line
- Road as Completed Line
- Wildfire Daily Fire Perimeter
- BLM
- Private
- State
- US Forest Service

Miles

0 0.5 1

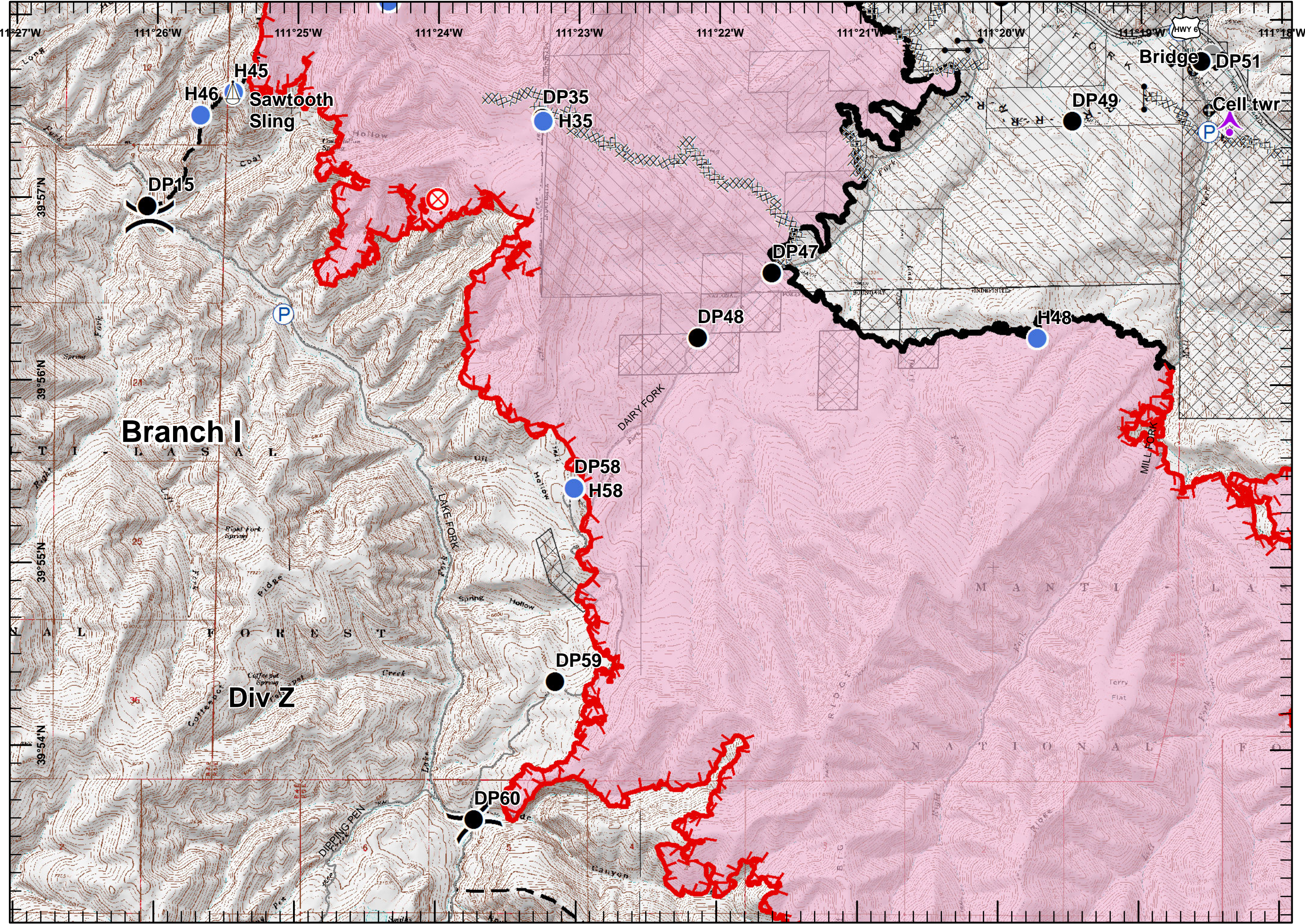
TSmith
 Aug. 18, 2018
 2034 Hours

	Aerial Hazard
	Camp
	Drop Point
	Fire Origin
	Gate
	Helispot
	Pump
	Sling Site
	Other
	Division Break
	Uncontrolled Fire Edge
	Completed Line
	Completed Dozer Line
	Completed Hand Line
	Road as Completed Line
	Planned Fire Line
	Wildfire Daily Fire Perimeter
	BLM
	Private
	State
	US Forest Service

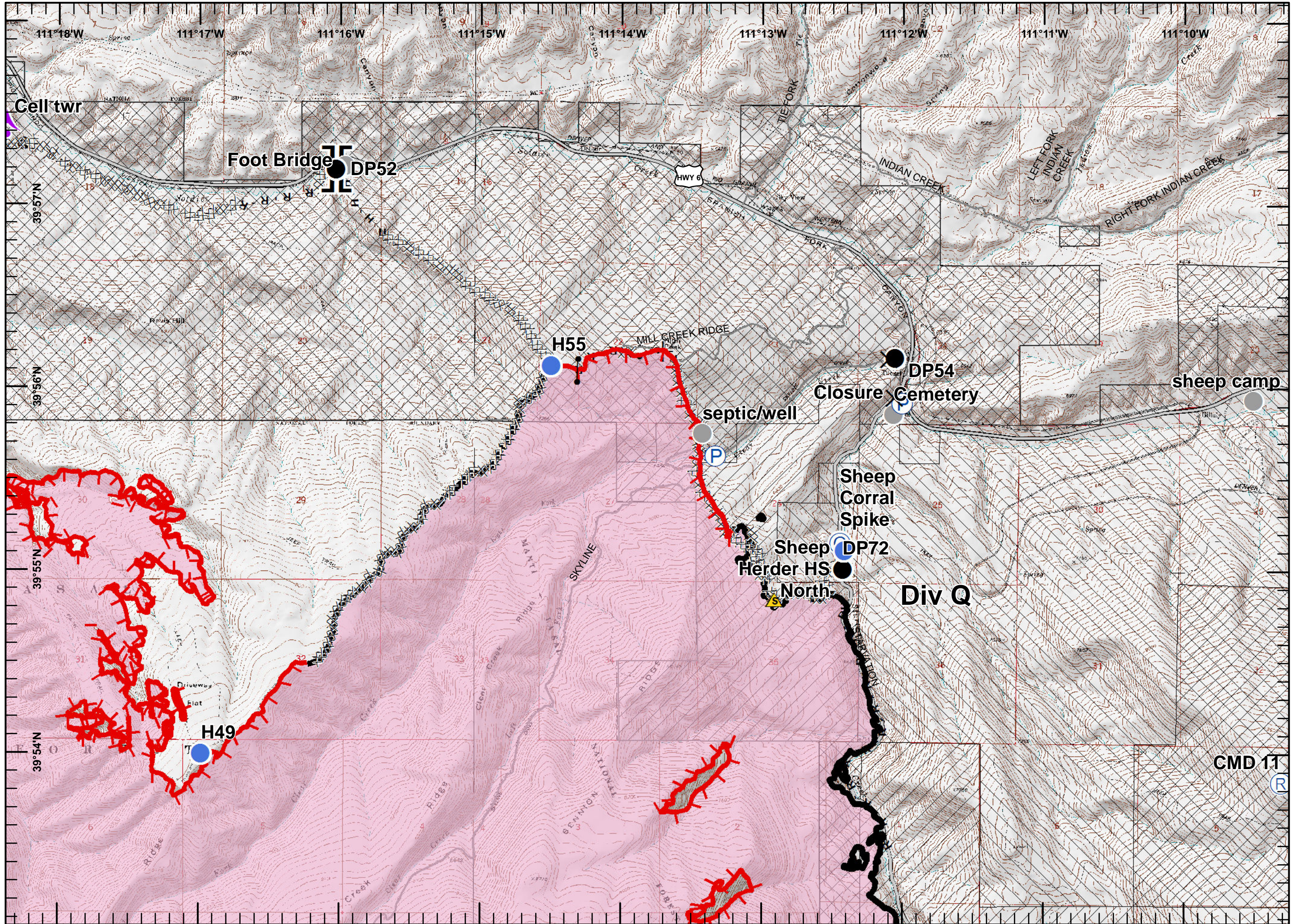
Miles

0 0.5 1

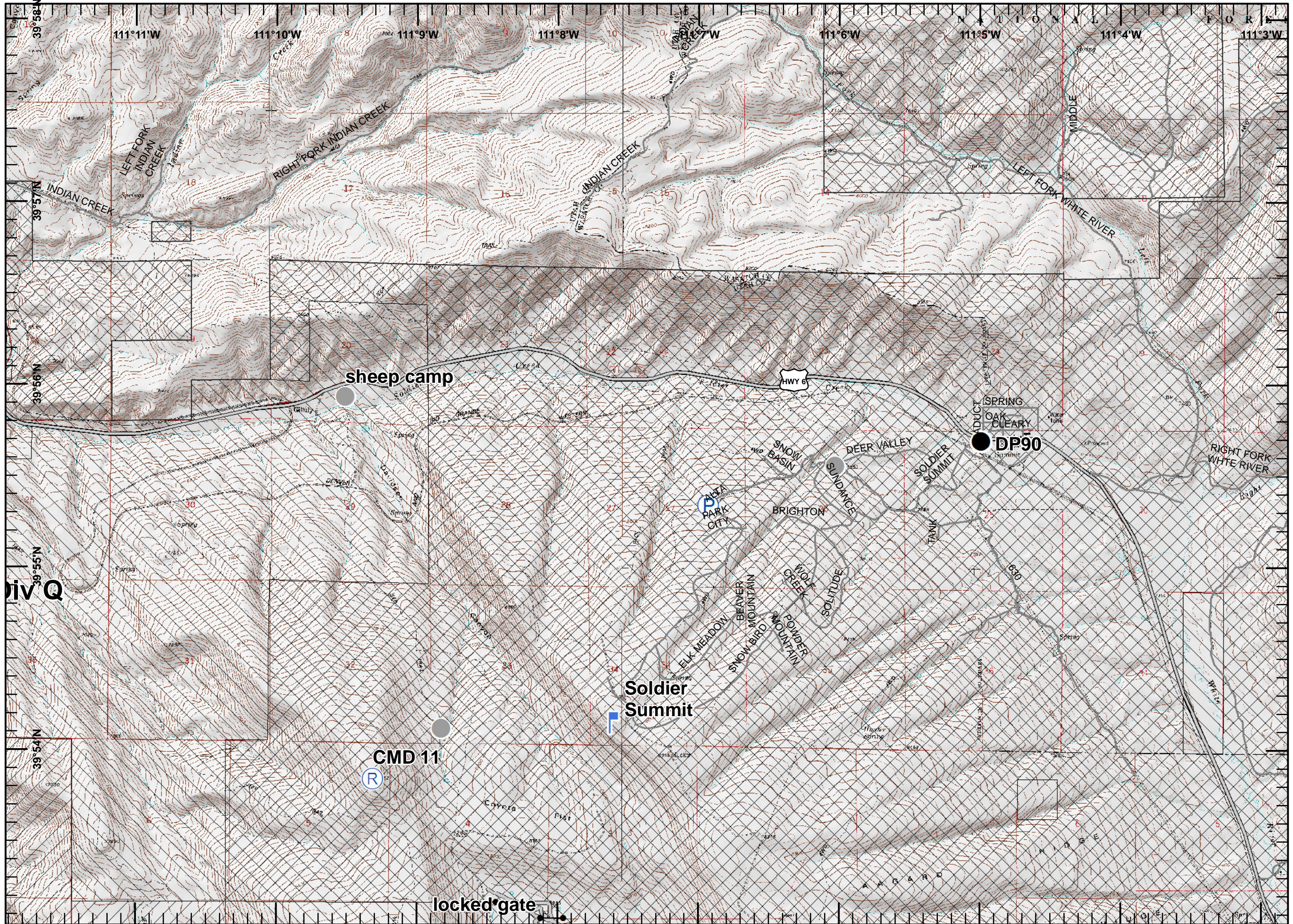
TSmith
 Aug. 18, 2018
 2034 Hours



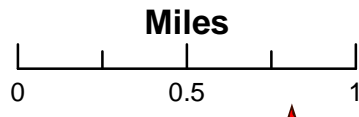
- Aerial Hazard
- Camp
- Closure
- Drop Point
- Gate
- Helispot
- Pump
- Repeater
- Safety Zone
- Other
- Branch Break
- Uncontrolled Fire Edge
- Completed Line
- Completed Dozer Line
- Completed Hand Line
- Road as Completed Line
- Access or Improved Road
- Proposed Dozer Line
- Wildfire Daily Fire Perimeter
- BLM
- Private
- State
- US Forest Service



Coal Hollow Fire
UT-MLF-008333
8/19/2018
Perim. 8/18/18
1600 hrs
29,651 ac.
NAD 83
Page 5



- Drop Point
- Gate
- ⌚ Lookout
- Ⓟ Pump
- Ⓡ Repeater
- Other
- Access or Improved Road
- ▨ BLM
- ▩ Private
- ▧ State
- US Forest Service



TSmith
 Aug. 18, 2018
 2034 Hours



sheep camp

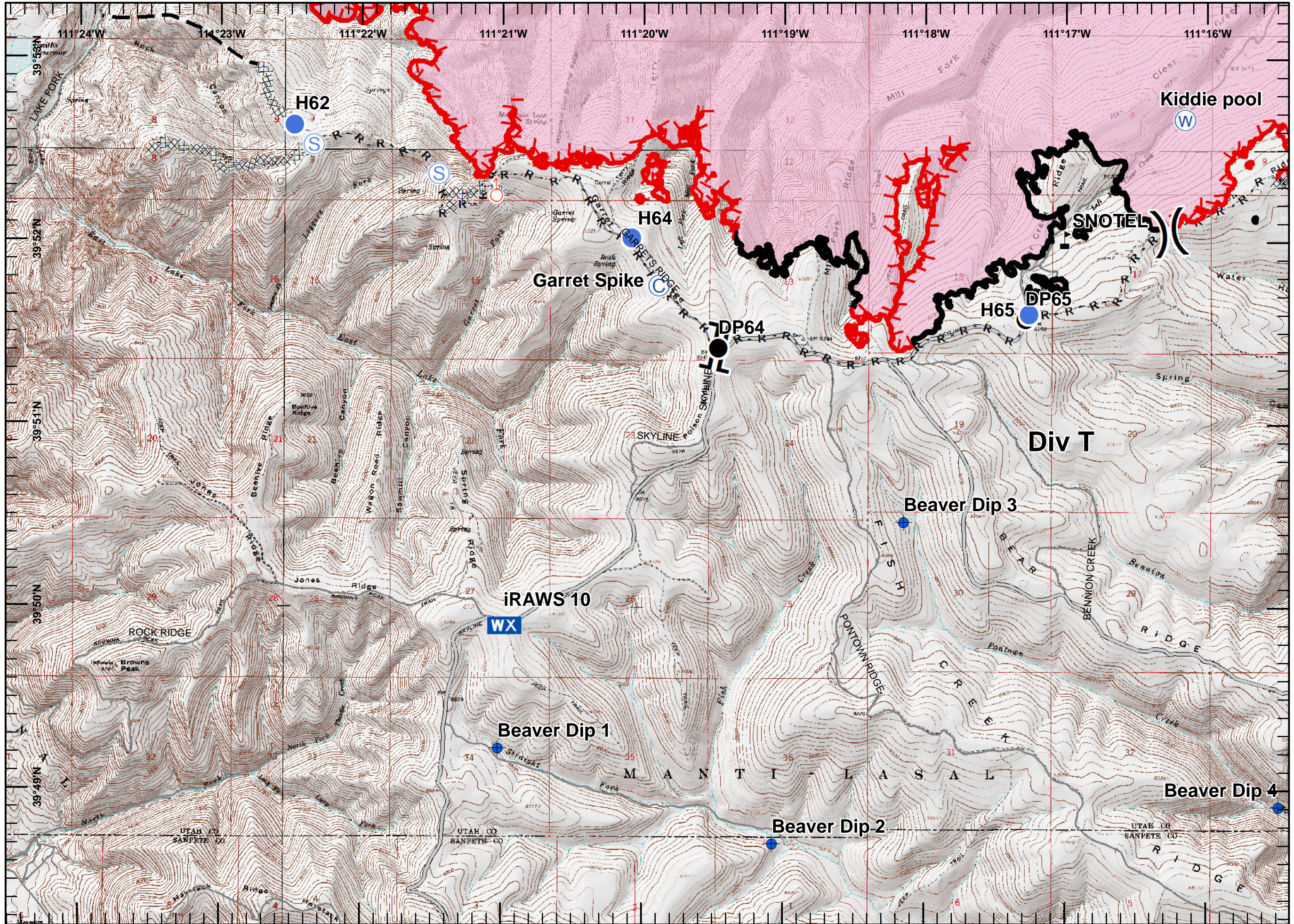
DP90

Soldier Summit

CMD 11

locked gate

Coal Hollow Fire
 UT-MLF-008333
 8/19/2018
 Perim. 8/18/18
 1600 hrs
 29,651 ac.
 NAD 83
 Page 6



- ⊙ Camp
- ⊕ Dip Site
- Drop Point
- Helispot
- WX Mobile Weather Unit
- ⊕ Spot Fire
- ⊙ Staging Area
- ⊙ Water Source
- ⚠ Value at Risk
-) (Division Break
- [[Branch Break
- ┌ Uncontrolled Fire Edge
- Completed Line
- XXXX Completed Dozer Line
- R - Road as Completed Line
- Access or Improved Road
- - - Planned Fire Line
- ⊕ Wildfire Daily Fire Perimeter
- US Forest Service

Miles

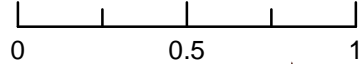
0 0.5 1

TSmith
 Aug. 18, 2018
 2034 Hours

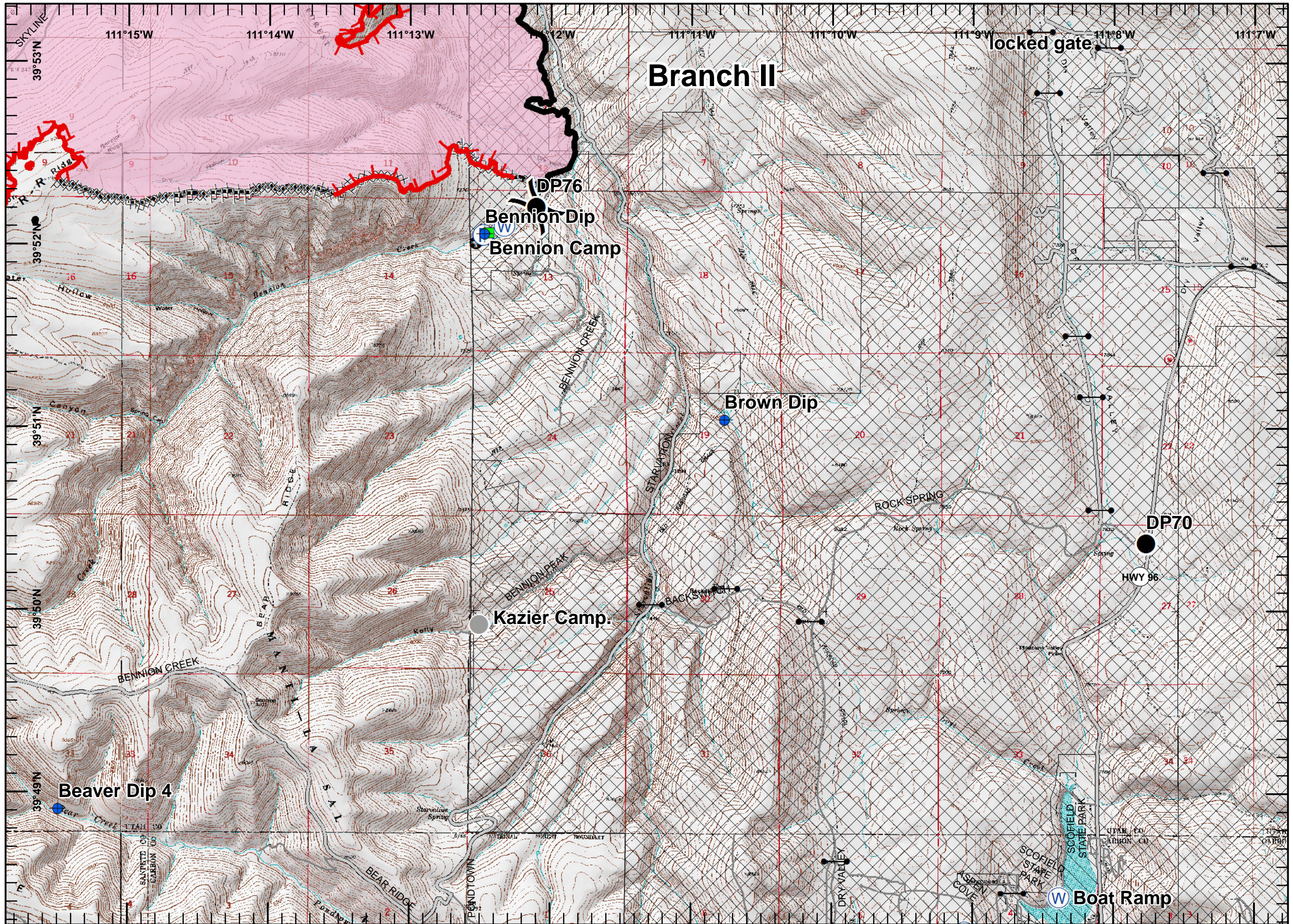
Coal Hollow Fire
 UT-MLF-008333
 8/19/2018
 Perim. 8/18/18
 1600 hrs
 29,651 ac.
 NAD 83
 Page 7

- Dip Site
- Drop Point
- Gate
- Landmark
- Pump
- Water Source
- Other
- Division Break
- Uncontrolled Fire Edge
- Completed Line
- Completed Dozer Line
- Completed Hand Line
- Road as Completed Line
- Access or Improved Road
- Wildfire Daily Fire Perimeter
- BLM
- Private
- State
- US Forest Service

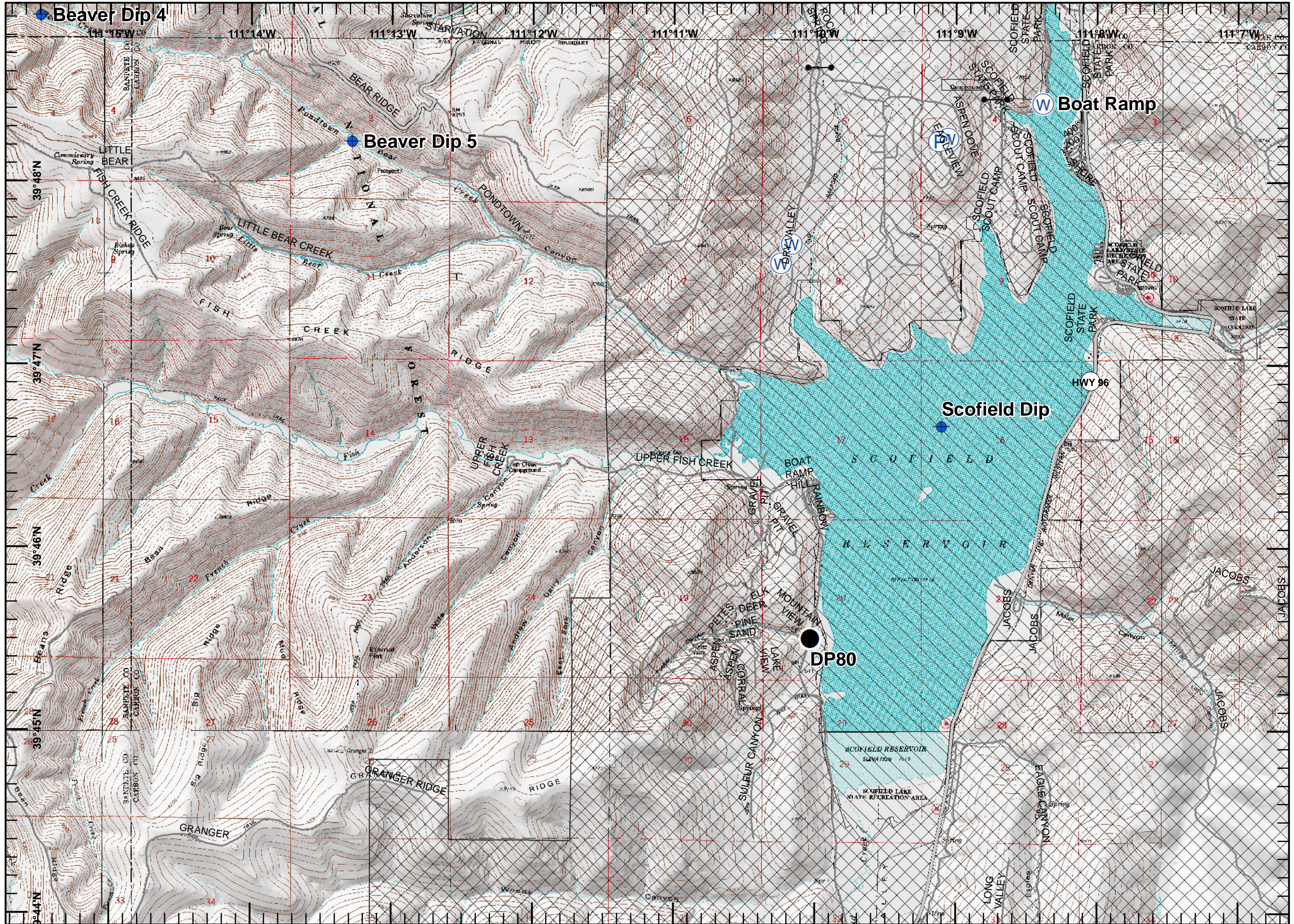
Miles



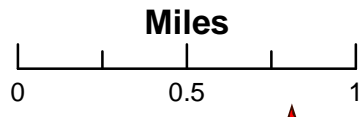
TSmith
 Aug. 18, 2018
 2034 Hours



Coal Hollow Fire
 UT-MLF-008333
 8/19/2018
 Perim. 8/18/18
 1600 hrs
 29,651 ac.
 NAD 83
 Page 8



- Dip Site
- Drop Point
- Gate
- Pump
- Water Source
- Access or Improved Road
- Private
- State
- US Forest Service



TSmith
 Aug. 18, 2018
 2034 Hours

Spanish Fork

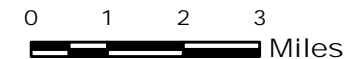
BRANCH III

COAL HOLLOW UT-MLF-008333



Travel Map 8/19/18

Perimeter as of 8/18/18 @1600 29,651 ac.



Datum NAD83

PK 8/18/18 2030

DIV J

DIV M

DIV Z

DIV Q

BRANCH I

DIV X

DIV R

BRANCH II

DIV T

COAL HOLLOW

DP25

DP10

DP44

DP45

DP46

DP51

DP49

DP52

DP54

DP90

DP15

DP35

DP47

DP48

DP58

DP59

DP60

DP72

DP76

DP70

DP64

DP65

DP80

HWY 31

HWY 264

HWY 96

HWY 96

HWY 6

HWY 6

HWY 191

HWY 89

STATE ST

FRONT ST

Clear Creek

Rock Ridge

SKYLINE

BENNION CREEK

PONTOWN RIDGE

STARVATION

ROCK SPRING

DRY VALLEY

SKYLINE

DAIRY FORK

LAKE FORK

SHEEP CREEK

TIE FORK

WHITE RIVER LEFT FORK

Sawtooth IHC Spike

Sheep Corral Spike

Garret Spike

HWY 89

STATE ST

HWY 89

STATE ST

FRONT ST

STATE ST