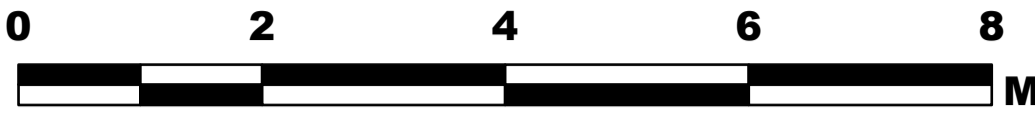


# COAL HOLLOW UT-MLF-008333

## Air Operations 8/20/18

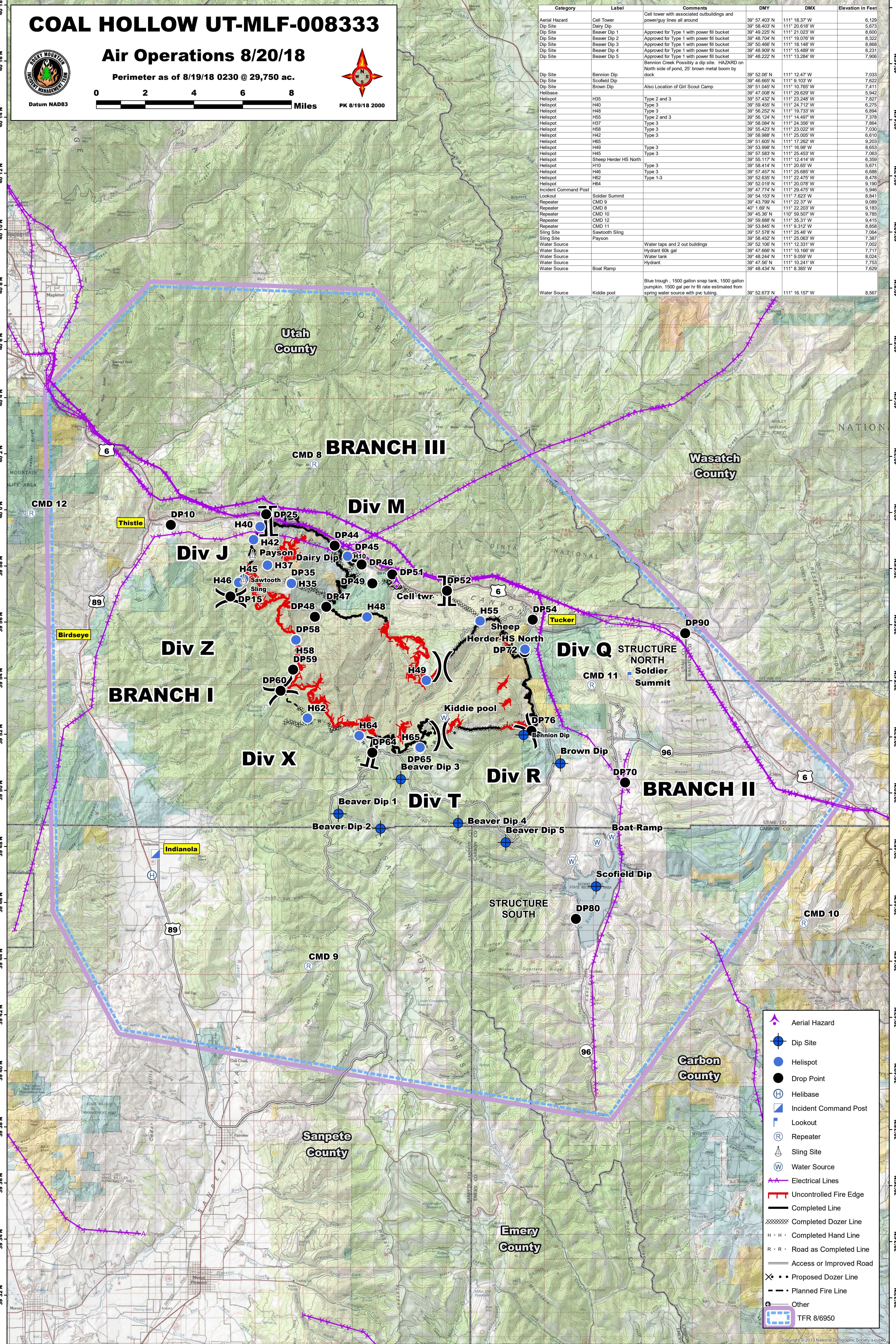
Perimeter as of 8/19/18 0230 @ 29,750 ac.



PK 8/19/18 2000

Datum NAD83

Category	Label	Comments	DMY	DMX	Elevation in Feet
Aerial Hazard	Cell Tower	Cell tower with associated outbuildings and power/guy lines all around	39° 57.403' N	111° 18.37' W	6,129
Dip Site	Dairy Dip	Approved for Type 1 with power fill bucket	39° 58.403' N	111° 20.618' W	5,673
Dip Site	Beaver Dip 1	Approved for Type 1 with power fill bucket	39° 49.225' N	111° 21.023' W	8,600
Dip Site	Beaver Dip 2	Approved for Type 1 with power fill bucket	39° 48.704' N	111° 19.076' W	8,322
Dip Site	Beaver Dip 3	Approved for Type 1 with power fill bucket	39° 50.466' N	111° 18.148' W	8,868
Dip Site	Beaver Dip 4	Approved for Type 1 with power fill bucket	39° 48.909' N	111° 15.489' W	8,231
Dip Site	Beaver Dip 5	Approved for Type 1 with power fill bucket	39° 48.222' N	111° 13.284' W	7,906
Dip Site	Bennion Dip	Bennion Creek Possibly a dip site. HAZARD on North side of pond, 25' brown metal boom by dock	39° 52.06' N	111° 12.47' W	7,033
Dip Site	Scofield Dip		39° 46.665' N	111° 9.103' W	7,622
Dip Site	Brown Dip	Also Location of Girl Scout Camp	39° 51.045' N	111° 10.765' W	7,411
Helibase			39° 47.008' N	111° 29.629' W	5,942
Helispot	H35	Type 2 and 3	39° 57.432' N	111° 23.248' W	7,827
Helispot	H40	Type 3	39° 59.455' N	111° 24.712' W	6,275
Helispot	H43	Type 3	39° 58.252' N	111° 19.733' W	6,894
Helispot	H55	Type 2 and 3	39° 56.124' N	111° 14.497' W	7,378
Helispot	H37	Type 3	39° 58.084' N	111° 24.356' W	7,864
Helispot	H58	Type 3	39° 55.423' N	111° 23.022' W	7,030
Helispot	H42	Type 3	39° 58.988' N	111° 25.005' W	6,610
Helispot	H65	Type 3	39° 51.605' N	111° 17.262' W	9,203
Helispot	H49	Type 3	39° 53.998' N	111° 16.58' W	8,653
Helispot	H45	Type 3	39° 57.583' N	111° 25.453' W	7,063
Helispot	Sheep Herder HS North		39° 55.117' N	111° 12.414' W	6,359
Helispot	H10	Type 3	39° 58.414' N	111° 20.65' W	5,671
Helispot	H46	Type 3	39° 57.457' N	111° 25.685' W	6,688
Helispot	H62	Type 3	39° 52.635' N	111° 22.475' W	8,478
Helispot	H64	Type 1-3	39° 52.018' N	111° 20.078' W	9,190
Incident Command Post			39° 47.774' N	111° 29.475' W	5,946
Lookout	Soldier Summit		39° 54.153' N	111° 7.623' W	8,841
Repeater	CMD 9		39° 43.799' N	111° 22.37' W	9,089
Repeater	CMD 8		40° 1.69' N	111° 22.203' W	9,183
Repeater	CMD 10		39° 45.36' N	110° 59.507' W	9,785
Repeater	CMD 12		39° 55.888' N	111° 35.31' W	9,415
Repeater	CMD 11		39° 53.845' N	111° 9.312' W	8,858
Sling Site	Sawtooth Sling		39° 57.578' N	111° 25.46' W	7,064
Sling Site	Payson		39° 58.452' N	111° 25.063' W	7,387
Water Source		Water taps and 2 out buildings	39° 52.106' N	111° 12.331' W	7,002
Water Source		Hydrant 60k gal	39° 47.665' N	111° 10.166' W	7,717
Water Source		Water tank	39° 48.244' N	111° 9.059' W	8,024
Water Source		Hydrant	39° 47.56' N	111° 10.241' W	7,753
Water Source	Boat Ramp		39° 48.434' N	111° 8.385' W	7,629
Water Source		Blue trough, 1500 gallon snap tank, 1500 gallon pumpkin. 1500 gal per hr fill rate estimated from spring water source with pvc tubing.	39° 52.673' N	111° 16.157' W	8,567



	Aerial Hazard
	Dip Site
	Helispot
	Drop Point
	Helibase
	Incident Command Post
	Lookout
	Repeater
	Sling Site
	Water Source
	Electrical Lines
	Uncontrolled Fire Edge
	Completed Line
	Completed Dozer Line
	Completed Hand Line
	Road as Completed Line
	Access or Improved Road
	Proposed Dozer Line
	Planned Fire Line
	Other
	TFR 8/6950