

Spanish Fork

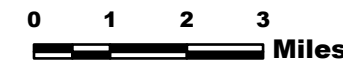
# BRANCH III

## COAL HOLLOW UT-MLF-008333



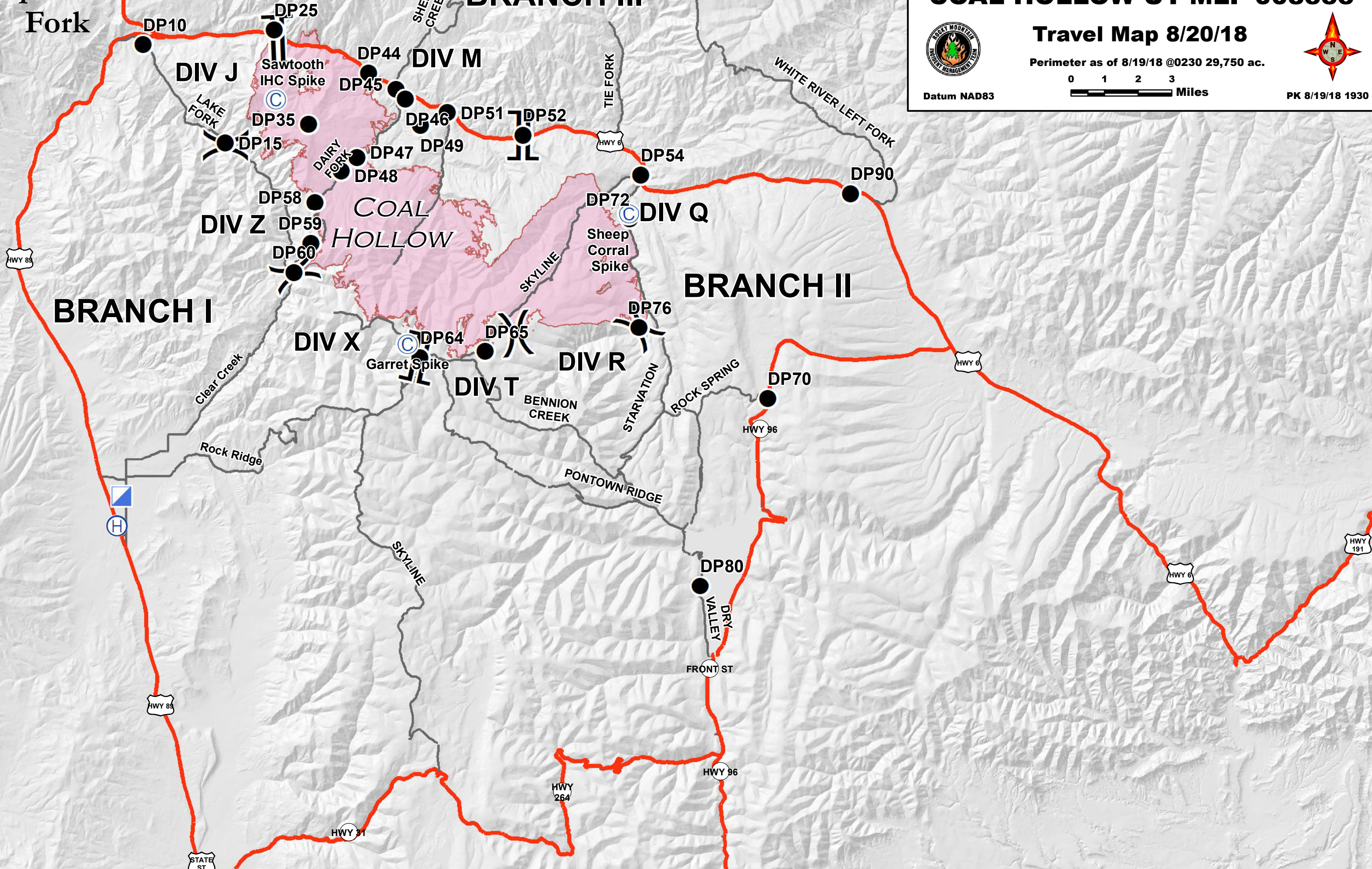
### Travel Map 8/20/18

Perimeter as of 8/19/18 @0230 29,750 ac.



PK 8/19/18 1930

Datum NAD83



DIV J

DIV M

DIV Q

DIV X

DIV R

DIV T

DIV Z

## BRANCH I

## BRANCH II

## BRANCH III

# COAL HOLLOW

Sawtooth IHC Spike

Sheep Corral Spike

Garret Spike

LAKE FORK

DAIRY FORK

SKYLINE

BENNION CREEK

PONTOWN RIDGE

SKYLINE

SHEEP CREEK

TIE FORK

WHITE RIVER LEFT FORK

Clear Creek

Rock Ridge

STARVATION

ROCK SPRING

DRY VALLEY

FRONT ST

HWY 85

HWY 264

HWY 31

HWY 96

HWY 96

HWY 6

HWY 96

HWY 191

HWY 6

STATE ST