

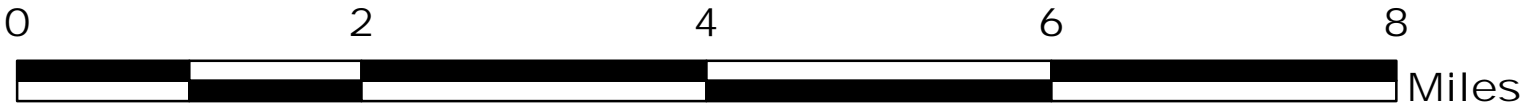
# COAL HOLLOW UT-MLF-008333



Air Operations 8/26/18

Perimeter as of 8/21/18 0315 @ 29,912 ac.

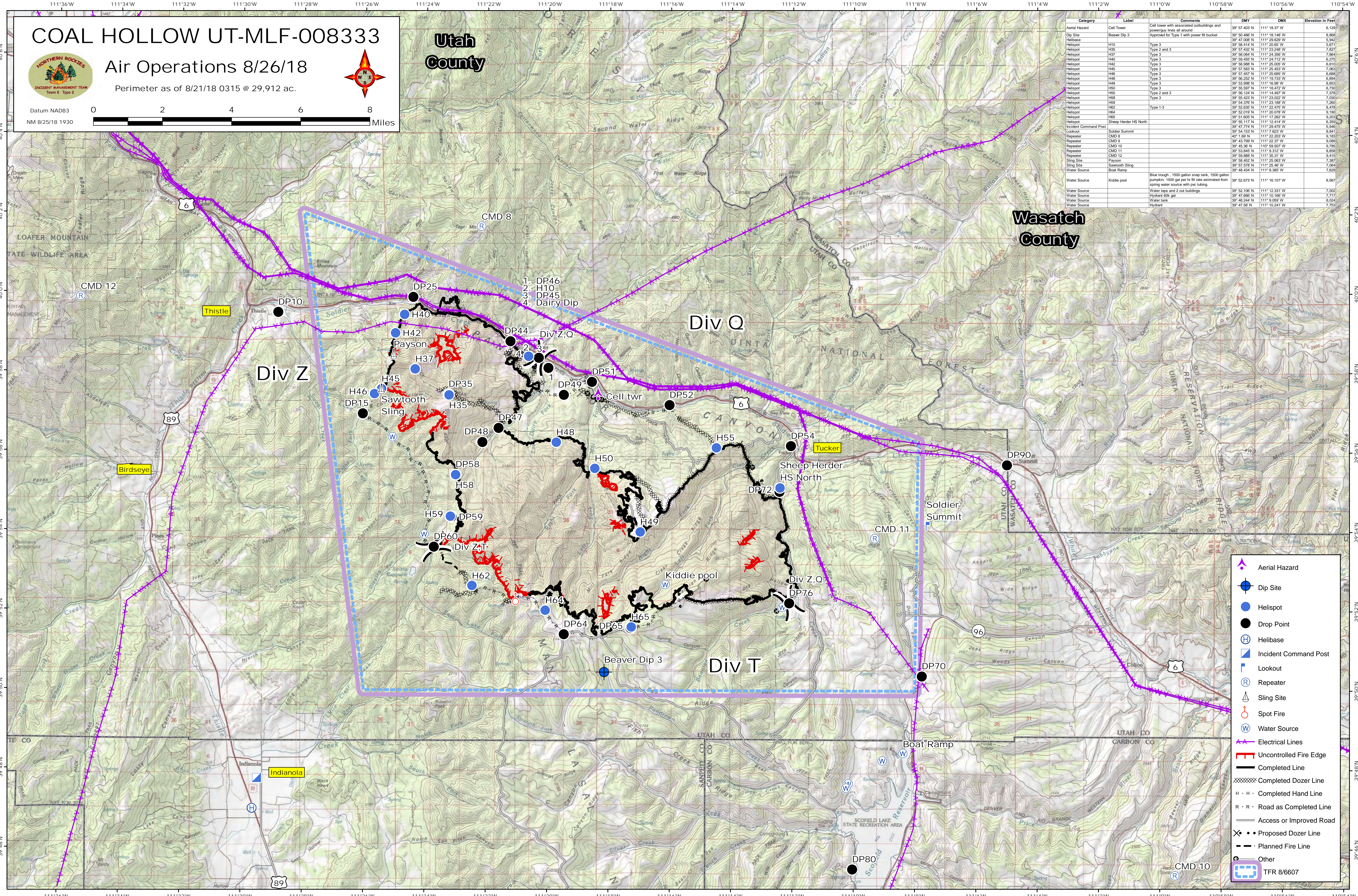
Datum NAD83  
NM 8/25/18 1930



Utah  
County

Wasatch  
County

Category	Label	Comments	DMY	DMX	Elevation in Feet
Aerial Hazard	Beaver Dip 3	Cell tower with associated outbuildings and powerlines all around	39° 57.403' N	111° 18.37' W	6,129
Dip Site	Beaver Dip 3	Approved for Type 1 with power fill bucket	39° 57.406' N	111° 18.148' W	8,868
Helibase	H10	Type 3	39° 58.414' N	111° 20.66' W	5,871
Helispot	H16	Type 3	39° 57.432' N	111° 23.248' W	7,827
Helispot	H37	Type 3	39° 58.084' N	111° 24.366' W	7,864
Helispot	H42	Type 3	39° 58.888' N	111° 24.712' W	6,275
Helispot	H45	Type 3	39° 57.583' N	111° 25.453' W	7,063
Helispot	H48	Type 3	39° 57.457' N	111° 25.666' W	6,688
Helispot	H49	Type 3	39° 53.998' N	111° 18.98' W	8,653
Helispot	H50	Type 3	39° 56.597' N	111° 18.422' W	6,730
Helispot	H55	Type 2 and 3	39° 56.124' N	111° 14.407' W	7,376
Helispot	H58	Type 3	39° 56.423' N	111° 23.022' W	7,030
Helispot	H59	Type 3	39° 56.376' N	111° 23.168' W	7,260
Helispot	H62	Type 1-3	39° 53.833' N	111° 22.475' W	9,190
Helispot	H64	Type 3	39° 52.019' N	111° 20.078' W	9,203
Helispot	H65	Type 3	39° 51.117' N	111° 17.262' W	8,369
Helispot	H66	Type 3	39° 47.774' N	111° 12.414' W	5,946
Incident Command Post	Sheep Herder HS North		39° 54.153' N	111° 7.823' W	8,841
Lookout	Soldier Summit		40° 1.68' N	111° 22.23' W	9,183
Repeater	CMD 8		39° 43.799' N	111° 22.37' W	9,089
Repeater	CMD 9		39° 46.36' N	110° 59.507' W	9,785
Repeater	CMD 10		39° 53.843' N	111° 33.32' W	8,858
Repeater	CMD 11		39° 58.888' N	111° 35.31' W	9,415
Sling Site	Payson		39° 58.452' N	111° 25.063' W	7,387
Sling Site	Sawtooth Sling		39° 57.573' N	111° 25.46' W	7,064
Water Source	Boat Ramp	Blue trough, 1500 gallon snap tank, 1500 gallon pumpkins, 1500 gal per hr fill rate estimated from spring water source with pvc tubing.	39° 52.673' N	111° 16.157' W	8,567
Water Source	Kiddie pool	Water taps and 2 out buildings	39° 52.106' N	111° 12.331' W	7,002
Water Source		Hydrant 600 gal	39° 47.668' N	111° 10.166' W	7,713
Water Source		Water tank	39° 48.244' N	111° 9.059' W	8,024
Water Source		Hydrant	39° 47.56' N	111° 10.241' W	7,753



- Aerial Hazard
- Dip Site
- Helispot
- Drop Point
- Helibase
- Incident Command Post
- Lookout
- Repeater
- Sling Site
- Spot Fire
- Water Source
- Electrical Lines
- Uncontrolled Fire Edge
- Completed Line
- Completed Dozer Line
- Completed Hand Line
- Road as Completed Line
- Access or Improved Road
- Proposed Dozer Line
- Planned Fire Line
- Other
- TFR 8/6607