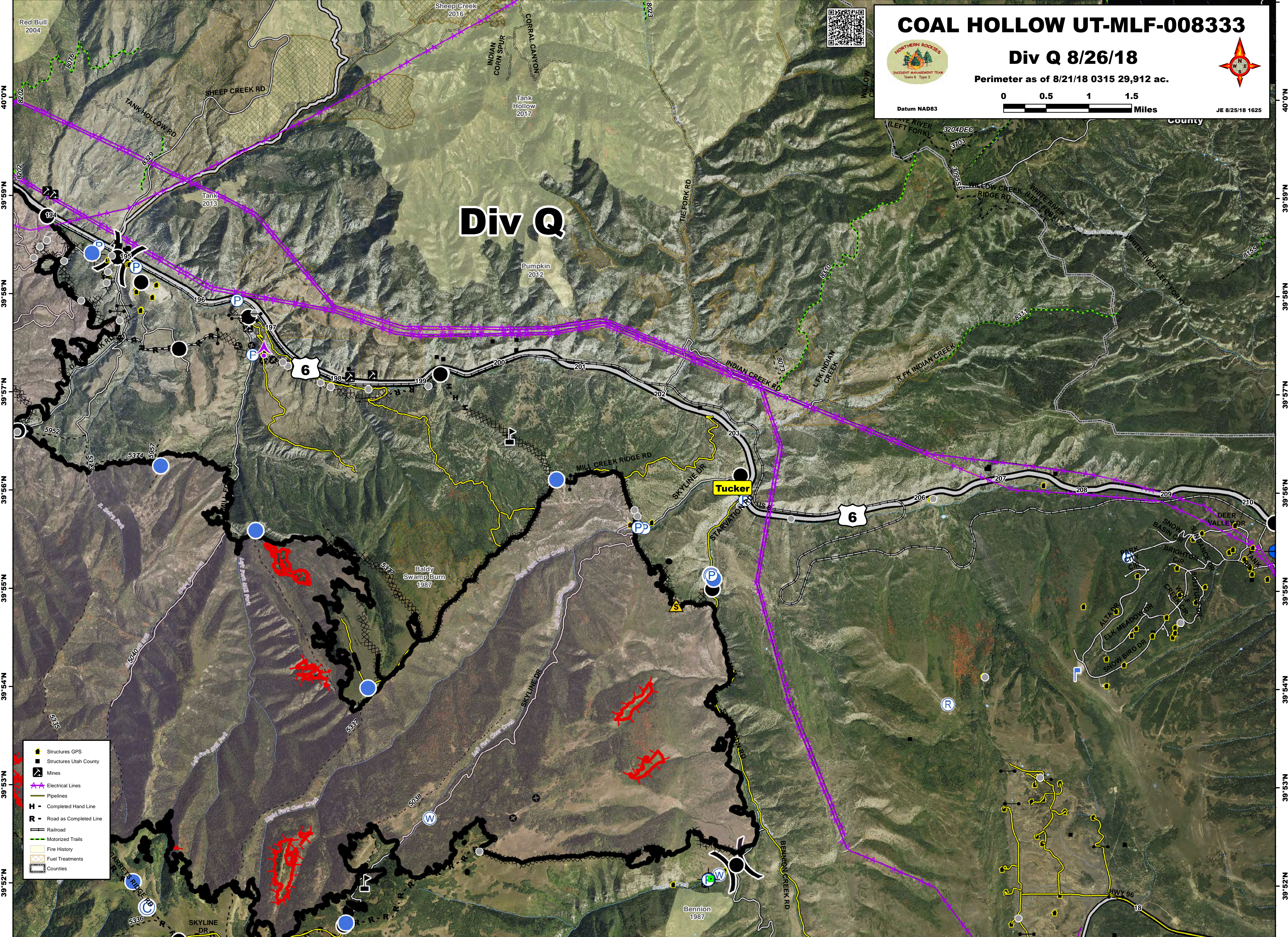


111°21'W 111°20'W 111°19'W 111°18'W 111°17'W 111°16'W 111°15'W 111°14'W 111°13'W 111°12'W 111°11'W 111°10'W 111°9'W 111°8'W 111°7'W 111°6'W 111°5'W

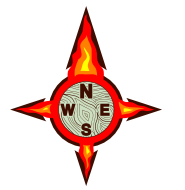


# COAL HOLLOW UT-MLF-008333



## Div Q 8/26/18

Perimeter as of 8/21/18 0315 29,912 ac.



Datum NAD83



JE 8/25/18 1625

# Div Q

Tucker

- Structures GPS
- Structures Utah County
- Mines
- Electrical Lines
- Pipelines
- Completed Hand Line
- Road as Completed Line
- Railroad
- Motorized Trails
- Fire History
- Fuel Treatments
- Counties

40°0'N 39°59'N 39°58'N 39°57'N 39°56'N 39°55'N 39°54'N 39°53'N 39°52'N

40°0'N 39°59'N 39°58'N 39°57'N 39°56'N 39°55'N 39°54'N 39°53'N 39°52'N

111°21'W 111°20'W 111°19'W 111°18'W 111°17'W 111°16'W 111°15'W 111°14'W 111°13'W 111°12'W 111°11'W 111°10'W 111°9'W 111°8'W 111°7'W 111°6'W 111°5'W