

111°24'W 111°23'W 111°22'W 111°21'W 111°20'W 111°19'W 111°18'W 111°17'W 111°16'W 111°15'W 111°14'W 111°13'W 111°12'W 111°11'W

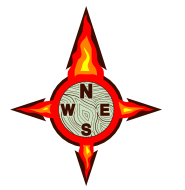
# COAL HOLLOW UT-MLF-008333



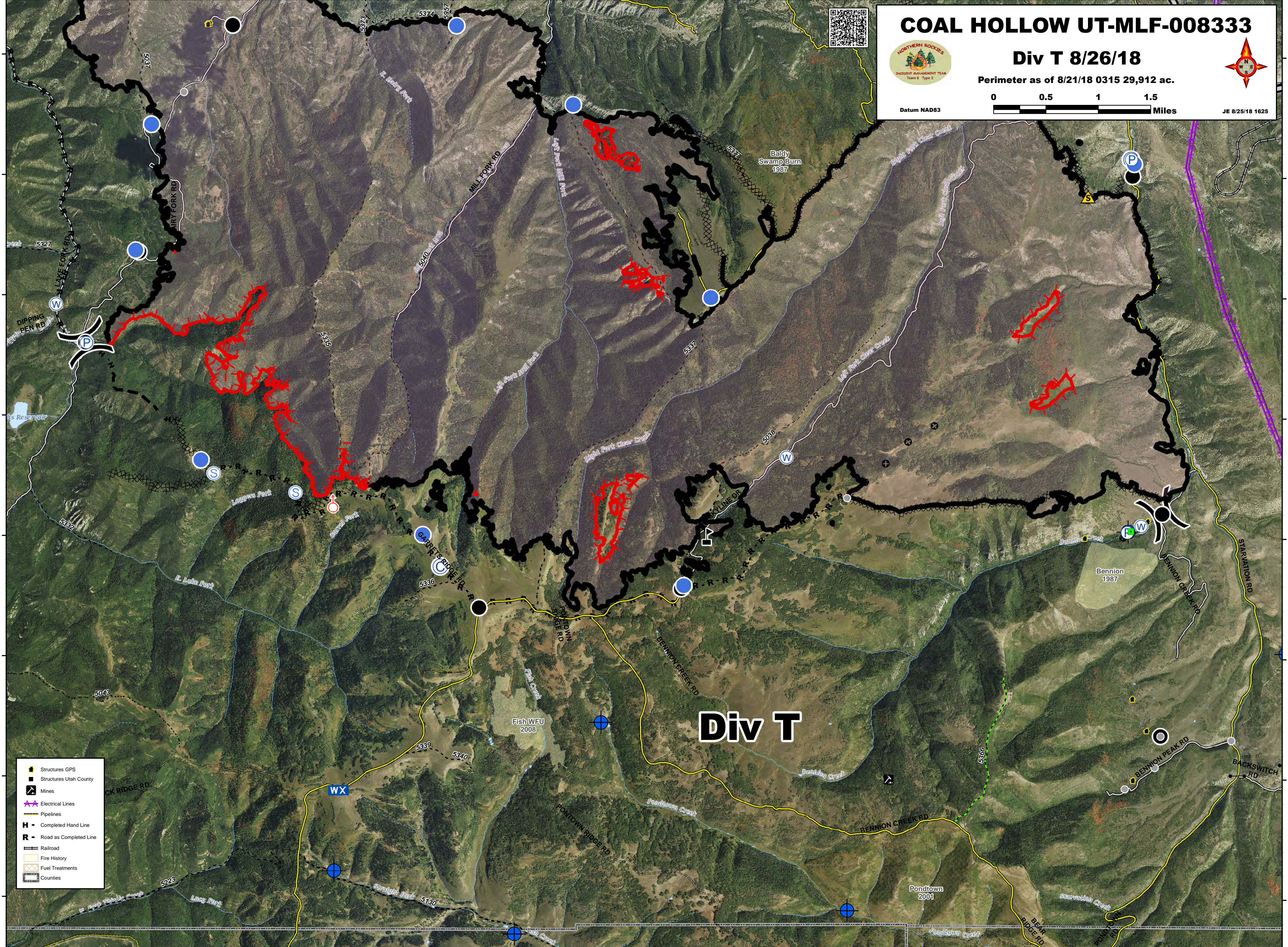
## Div T 8/26/18

Perimeter as of 8/21/18 0315 29,912 ac.

Datum NAD83



JE 8/25/18 1625



- Structures GPS
- Structures Utah County
- Mines
- Electrical Lines
- Pipelines
- Completed Hand Line
- Road as Completed Line
- Railroad
- Fire History
- Fuel Treatments
- Counties

111°24'W 111°23'W 111°22'W 111°21'W 111°20'W 111°19'W 111°18'W 111°17'W 111°16'W 111°15'W 111°14'W 111°13'W 111°12'W 111°11'W

39°56'N  
39°55'N  
39°54'N  
39°53'N  
39°52'N  
39°51'N  
39°50'N  
39°49'N

39°56'N  
39°55'N  
39°54'N  
39°53'N  
39°52'N  
39°51'N  
39°50'N  
39°49'N