

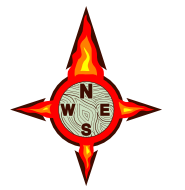
111°34'W 111°33'W 111°32'W 111°31'W 111°30'W 111°29'W 111°28'W 111°27'W 111°26'W 111°25'W 111°24'W 111°23'W 111°22'W 111°21'W 111°20'W 111°19'W 111°18'W

# COAL HOLLOW UT-MLF-008333



## Div Z 8/26/18

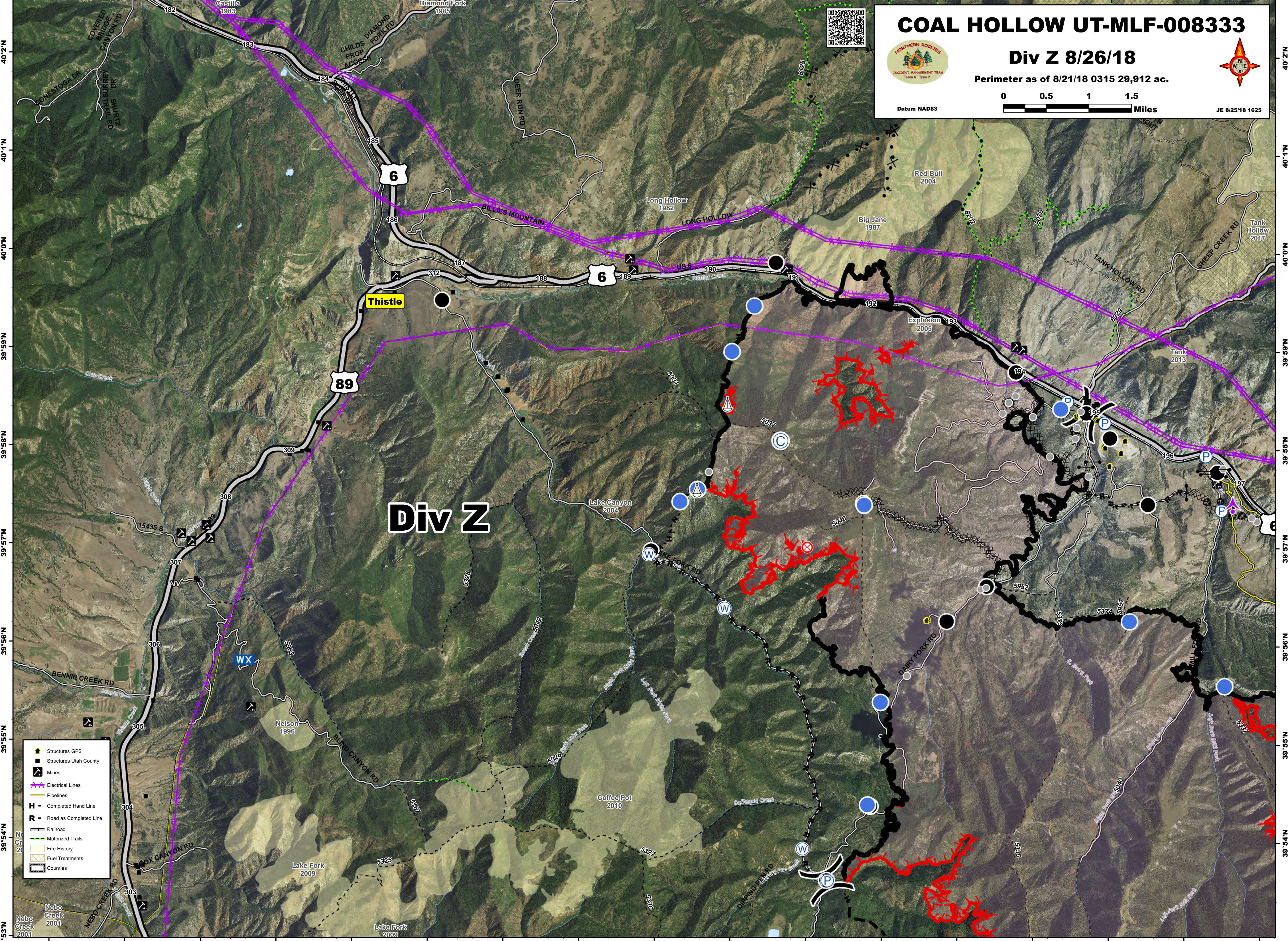
Perimeter as of 8/21/18 0315 29,912 ac.



Datum NAD83



JE 8/25/18 1625



# Div Z

- Structures GPS
- Structures Utah County
- Mines
- Electrical Lines
- Pipelines
- Completed Hand Line
- Road as Completed Line
- Railroad
- Motorized Trails
- Fire History
- Fuel Treatments
- Counties

Nebo Creek 2001

111°34'W 111°33'W 111°32'W 111°31'W 111°30'W 111°29'W 111°28'W 111°27'W 111°26'W 111°25'W 111°24'W 111°23'W 111°22'W 111°21'W 111°20'W 111°19'W 111°18'W