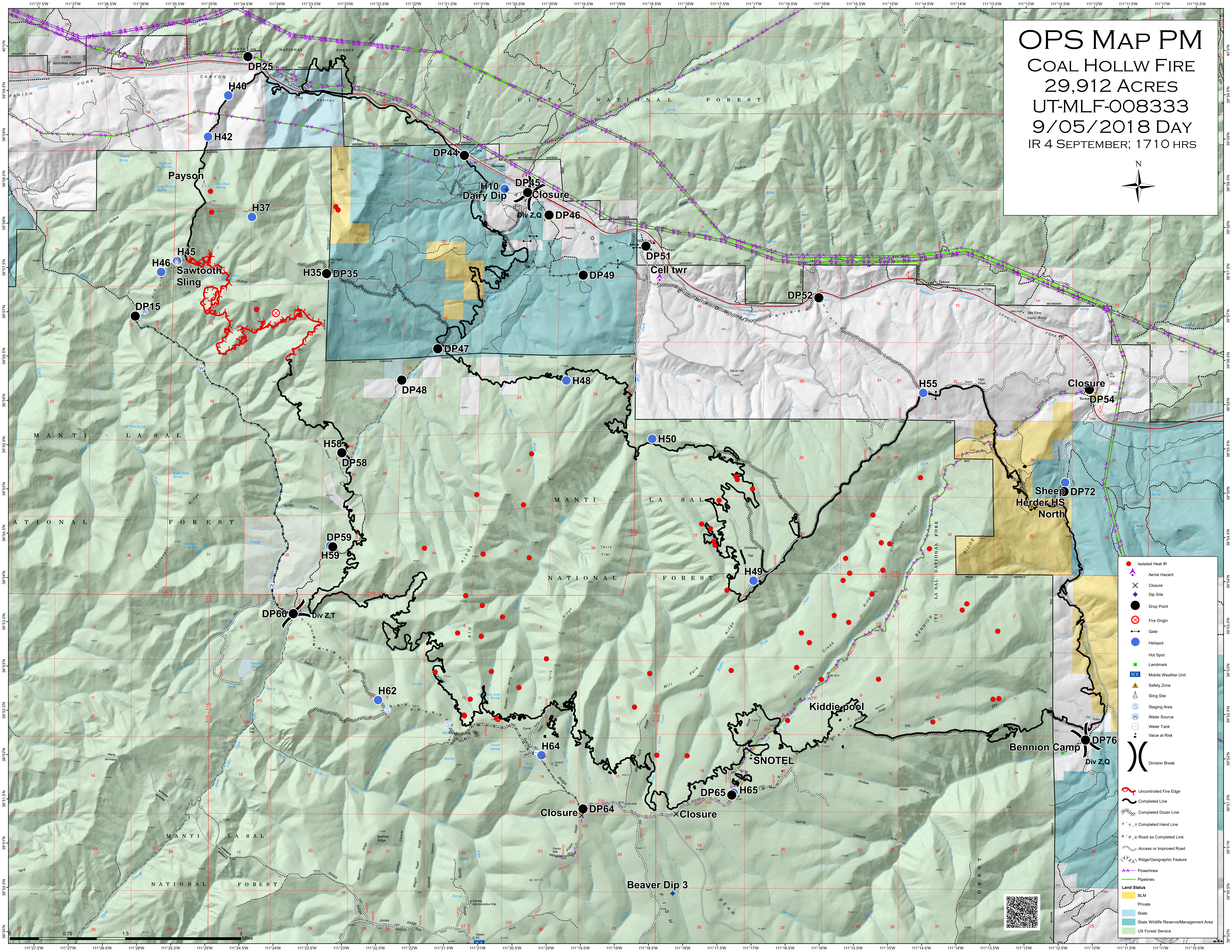
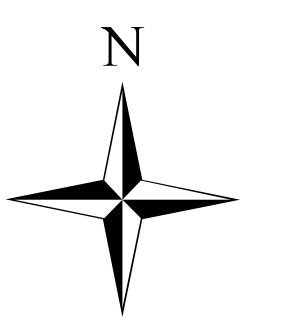


# OPS MAP PM

COAL HOLLOW FIRE  
29,912 ACRES  
UT-MLF-008333  
9/05/2018 DAY  
IR 4 SEPTEMBER; 1710 HRS



- Isolated Heat IR
- ⚡ Aerial Hazard
- ✕ Closure
- ◆ Dip Site
- Drop Point
- ⊗ Fire Origin
- ➔ Gate
- Helispot
- Hot Spot
- Landmark
- WX Mobile Weather Unit
- ▲ Safety Zone
- ⚙ Sling Site
- ⊙ Staging Area
- ⊕ Water Source
- ⊕ Water Tank
- ⚡ Value at Risk
- Division Break
- ~ Uncontrolled Fire Edge
- Completed Line
- Completed Dozer Line
- Completed Hand Line
- Road as Completed Line
- Access or Improved Road
- Ridge/Geographic Feature
- Powerlines
- Pipelines
- Land Status**
- BLM
- Private
- State
- State Wildlife Reserve/Management Area
- US Forest Service



0.75 1.5 3 Miles