

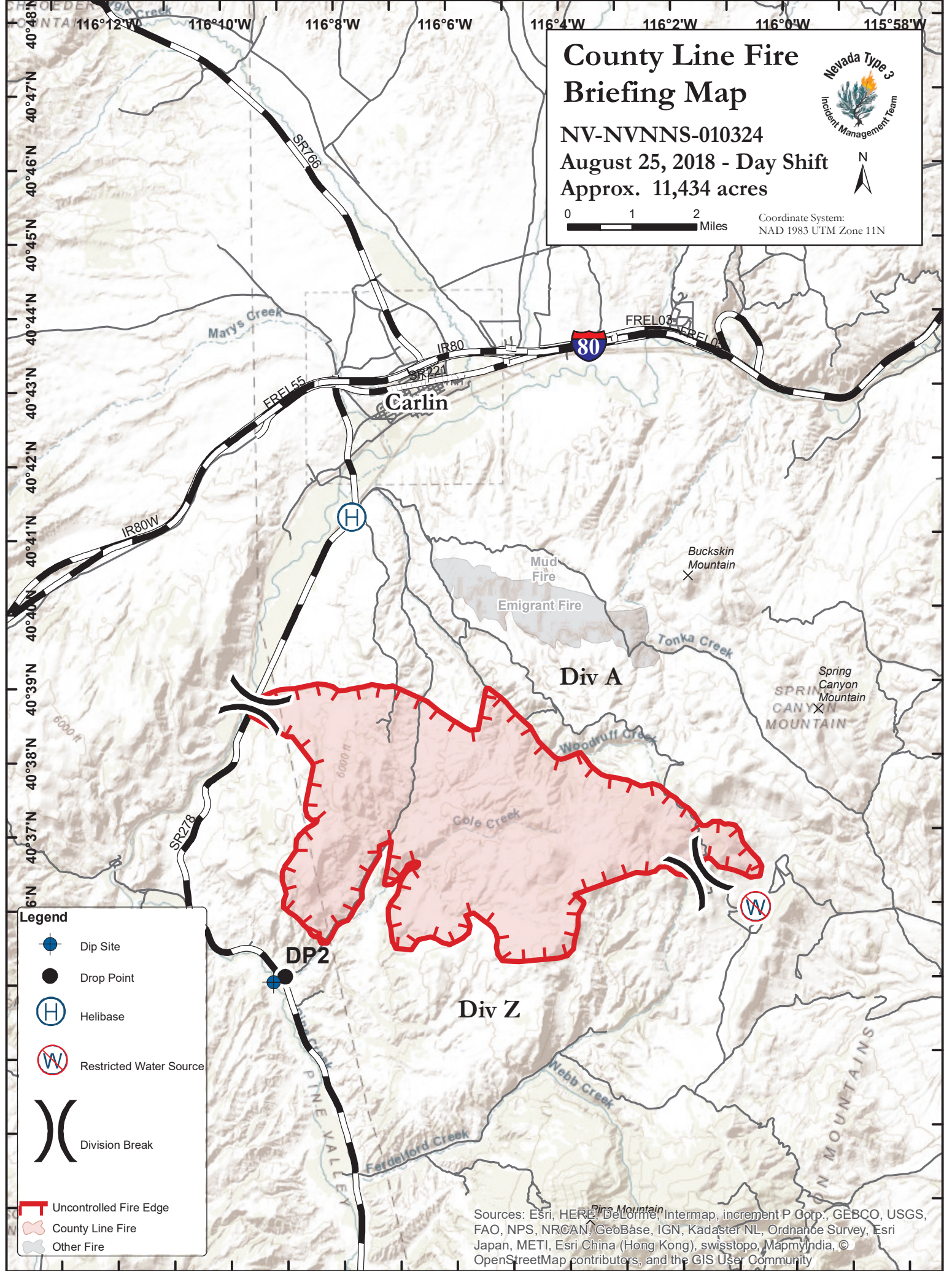
County Line Fire Briefing Map



NV-NVNNS-010324
August 25, 2018 - Day Shift
Approx. 11,434 acres



Coordinate System:
NAD 1983 UTM Zone 11N



Legend

- Dip Site
- Drop Point
- Helibase
- Restricted Water Source
- Division Break
- Uncontrolled Fire Edge
- County Line Fire
- Other Fire

Sources: Esri, HERE, DeLorme, Intermap, increment P Corp., GEBCO, USGS, FAO, NPS, NRCAN, GeoBase, IGN, Kadaster NL, Ordnance Survey, Esri Japan, METI, Esri China (Hong Kong), swisstopo, MapmyIndia, © OpenStreetMap contributors, and the GIS User Community