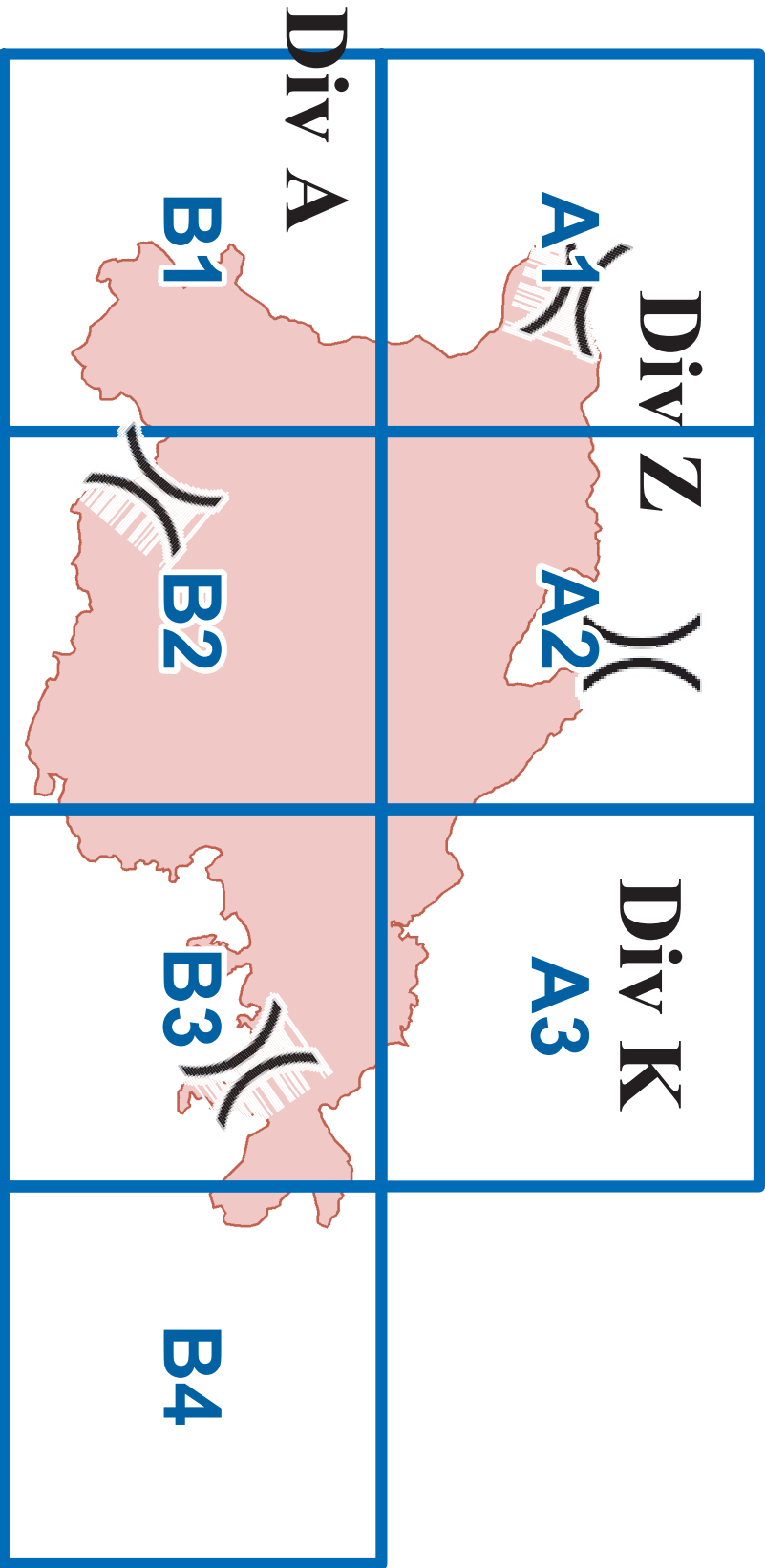
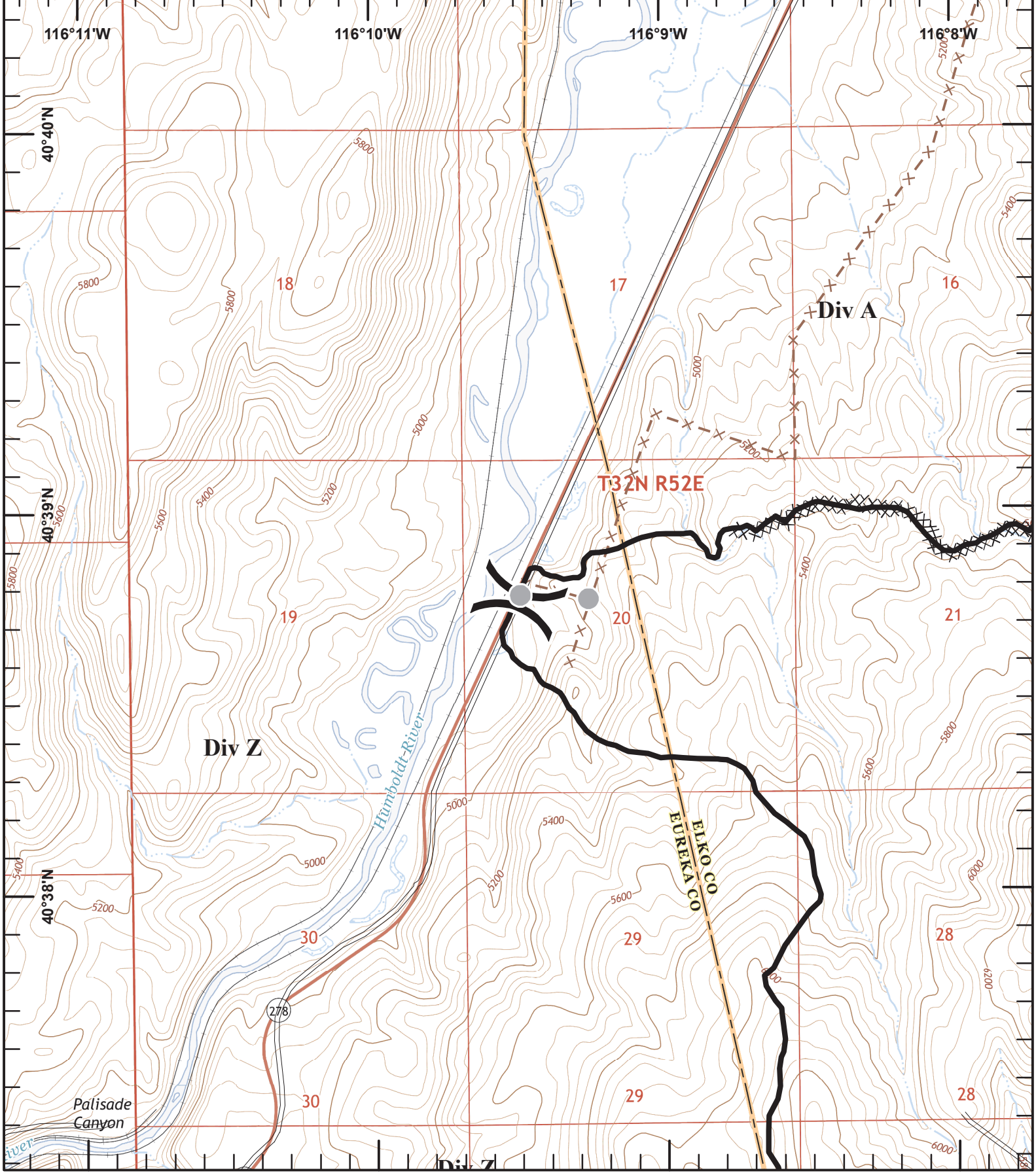


County Line
IAP Grid Index
NV-NNS-10324
August 27, 2018 Day
12,976 Acres



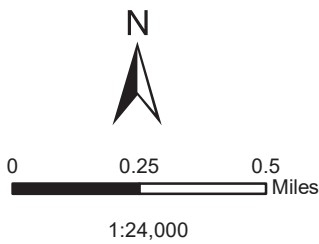
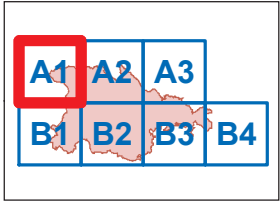
Div M



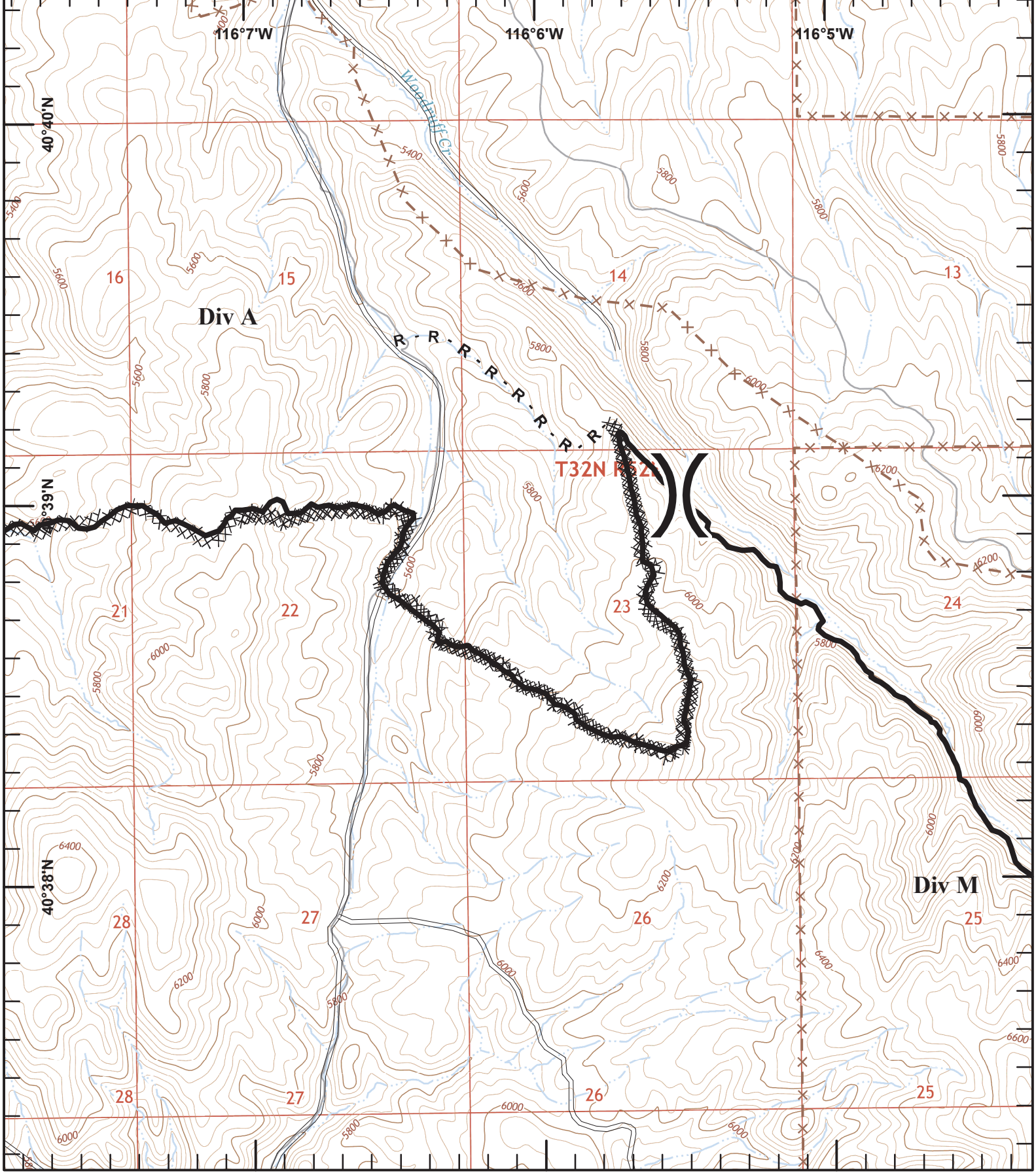
Sheep Creek IAP Map

A1

NV-NNS-10324
 August 26, 2018 -
 Day Shift
 12,976 Acres as of 8/25 1200



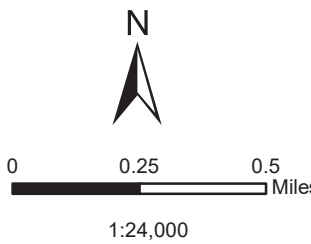
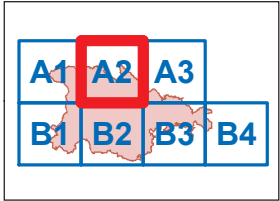
- Other
- Completed Dozer Line
- Completed Line
- Local Road
- Fence
- Division Break



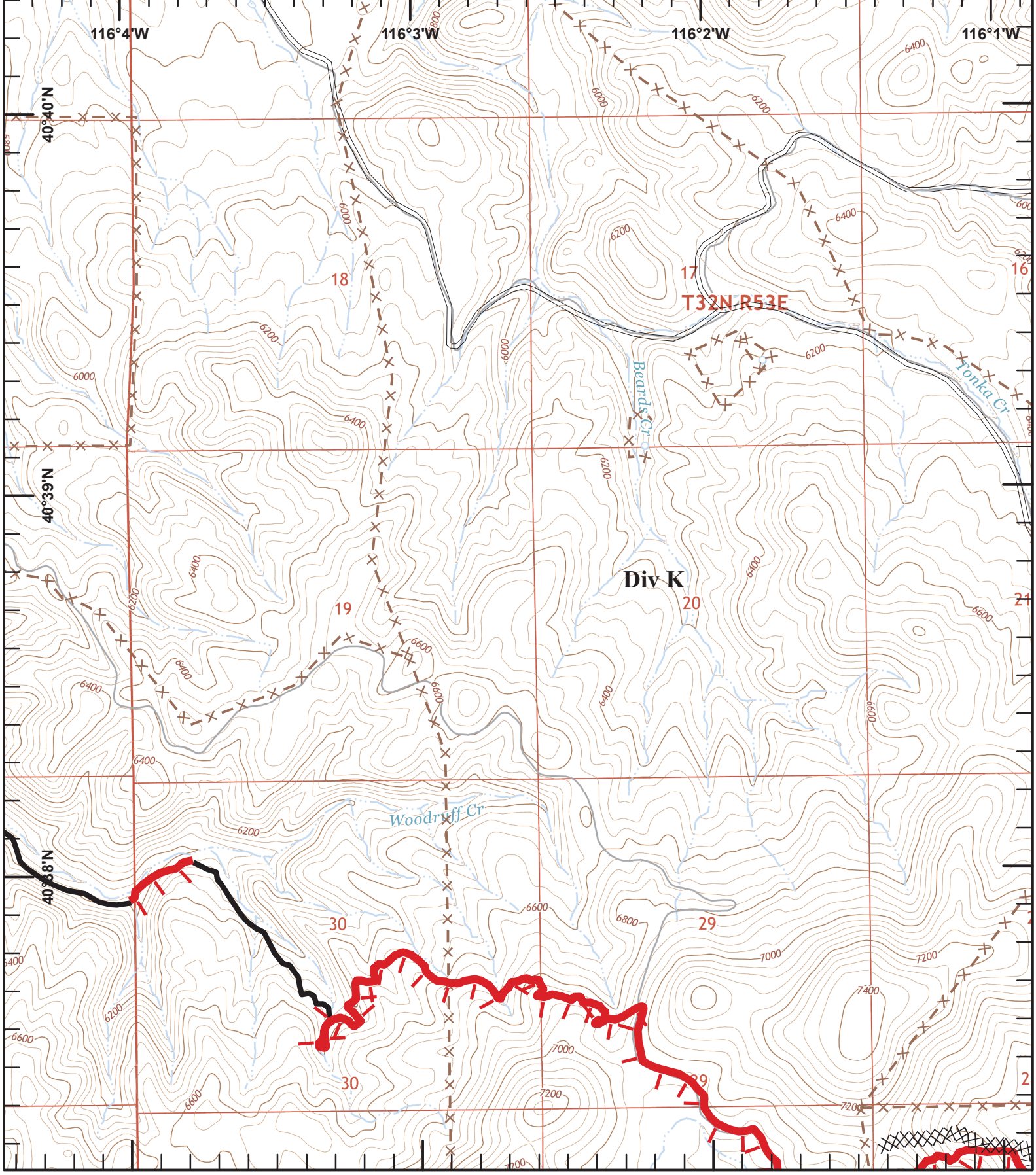
Sheep Creek
IAP Map

A2

NV-NNS-10324
August 26, 2018 -
Day Shift
12,976 Acres as of 8/25 1200



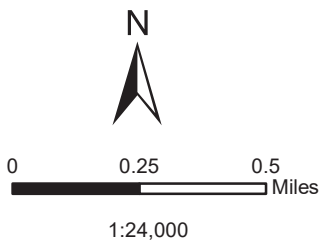
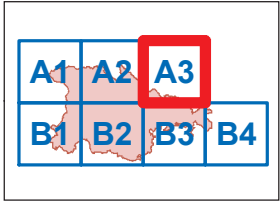
- Completed Dozer Line
- Completed Line
- Road as Completed Line
- Local Road
- Fence
- Division Break



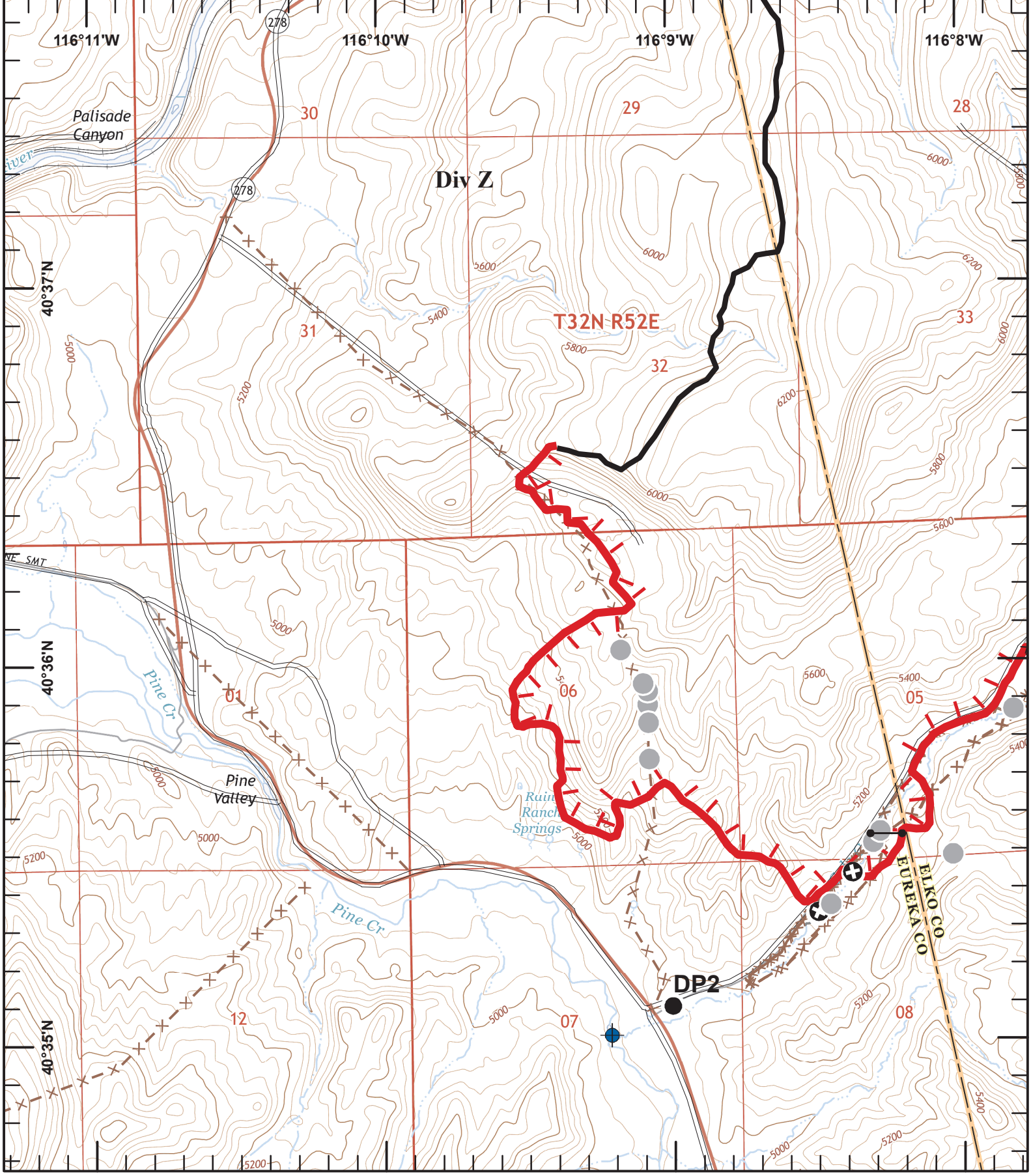
Sheep Creek
IAP Map

A3

NV-NNS-10324
August 26, 2018 -
Day Shift
12,976 Acres as of 8/25 1200



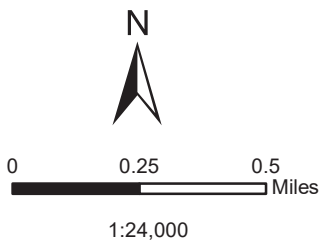
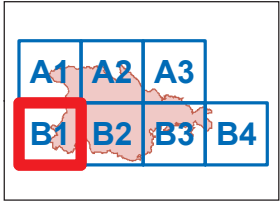
- XX Completed Dozer Line
- ┆ Uncontrolled Fire Edge
- █ Completed Line
- ▬ Local Road
- X Fence



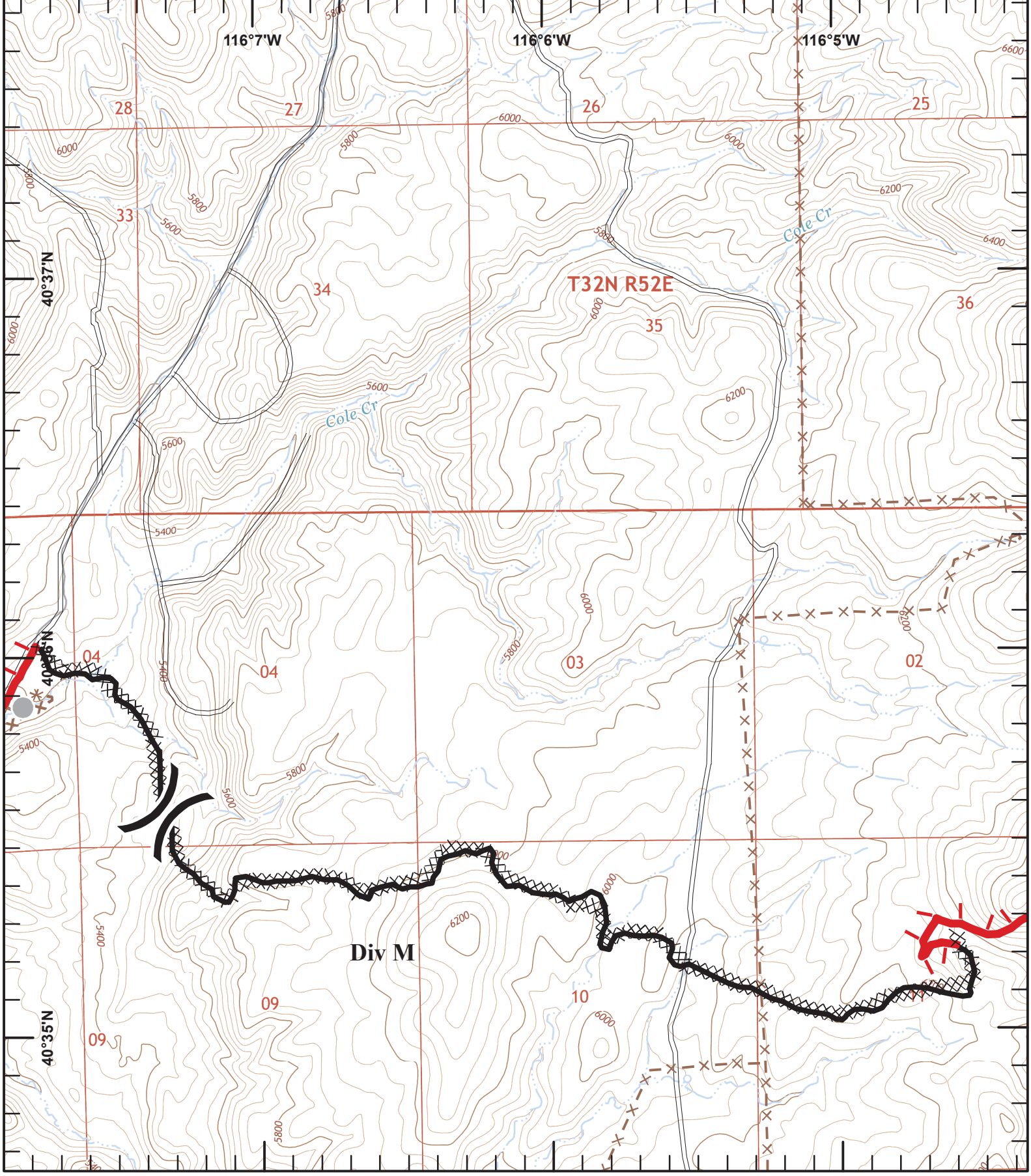
Sheep Creek
IAP Map

B1

NV-NNS-10324
August 26, 2018 -
Day Shift
12,976 Acres as of 8/25 1200



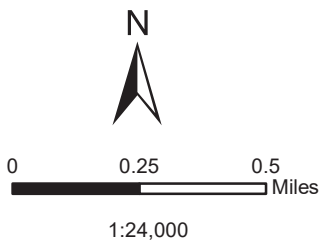
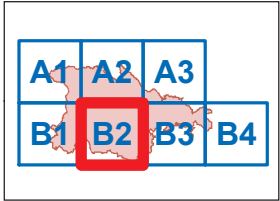
- Dip Site
- Uncontrolled Fire Edge
- Completed Line
- Drop Point
- Other
- Gate
- Local Road
- Fence
- Other



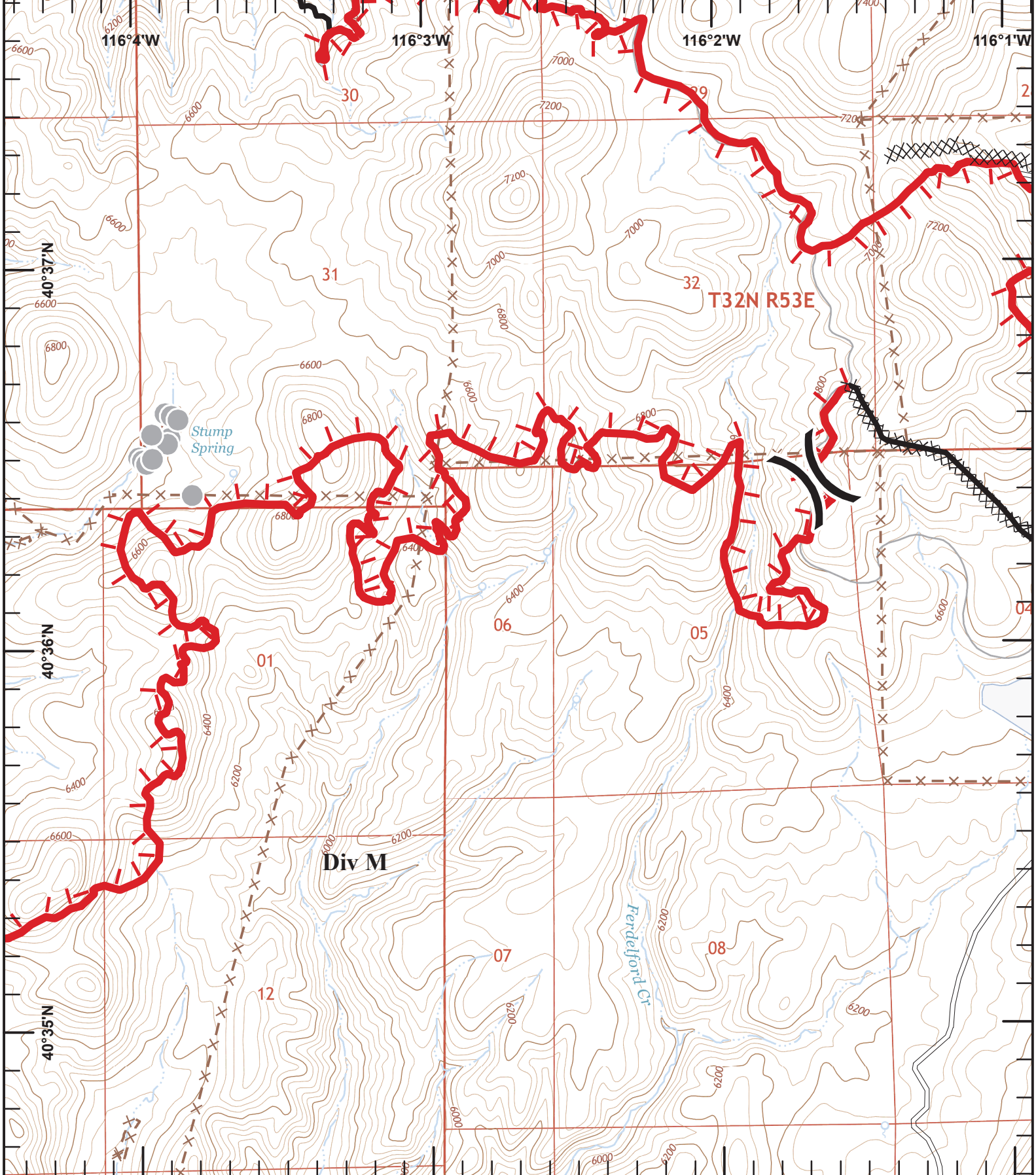
Sheep Creek
IAP Map

B2

NV-NNS-10324
August 26, 2018 -
Day Shift
12,976 Acres as of 8/25 1200

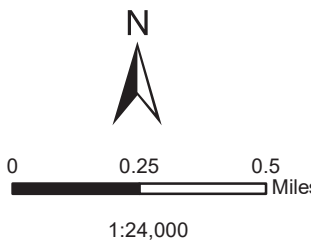
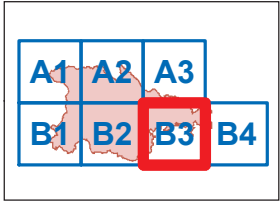


- Other
- Uncontrolled Fire Edge
- Completed Line
- Local Road
- Fence
- Division Break
- Completed Dozer Line

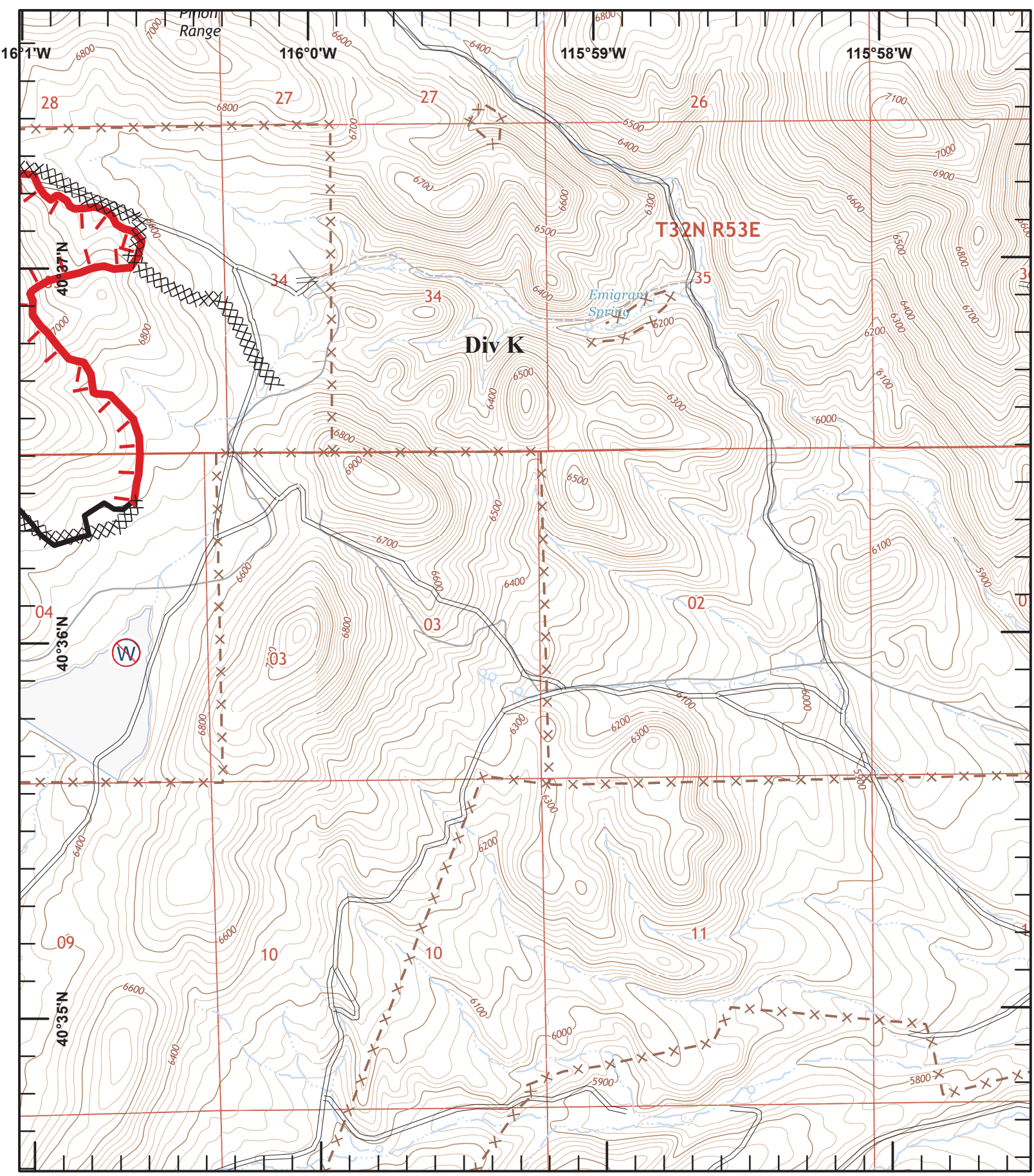


Sheep Creek
IAP Map

B3
NV-NNS-10324
August 26, 2018 -
Day Shift
12,976 Acres as of 8/25 1200



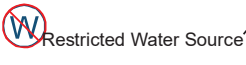
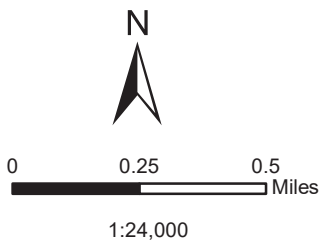
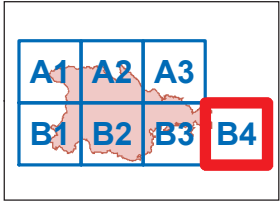
- Other
- XX Completed Dozer Line
- ┆ Uncontrolled Fire Edge
- Completed Line
- - - Local Road
- X Fence
-) (Division Break



Sheep Creek
IAP Map

B4

NV-NNS-10324
August 26, 2018 -
Day Shift
12,976 Acres as of 8/25 1200



- Completed Dozer Line
- Uncontrolled Fire Edge
- Completed Line
- Local Road
- Trail
- Fence