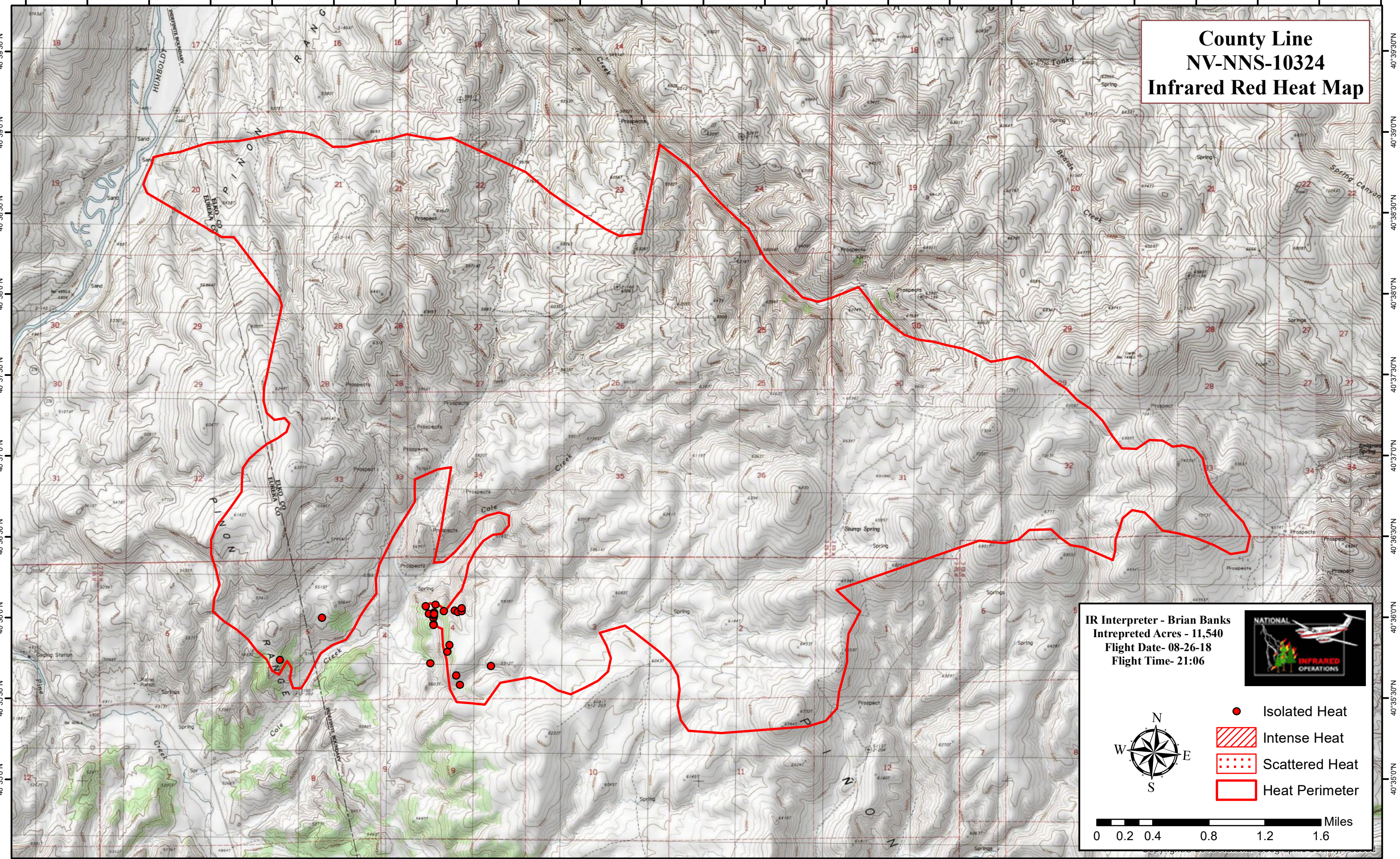


116°10'30"W 116°10'0"W 116°9'30"W 116°9'0"W 116°8'30"W 116°8'0"W 116°7'30"W 116°7'0"W 116°6'30"W 116°6'0"W 116°5'30"W 116°5'0"W 116°4'30"W 116°4'0"W 116°3'30"W 116°3'0"W 116°2'30"W 116°2'0"W 116°1'30"W 116°1'0"W 116°0'30"W 116°0'0"W 115°59'30"W

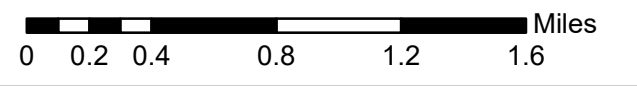


# County Line NV-NNS-10324 Infrared Red Heat Map

**IR Interpreter - Brian Banks**  
**Intepreted Acres - 11,540**  
**Flight Date- 08-26-18**  
**Flight Time- 21:06**



- Isolated Heat
- Intense Heat
- Scattered Heat
- Heat Perimeter



116°10'30"W 116°10'0"W 116°9'30"W 116°9'0"W 116°8'30"W 116°8'0"W 116°7'30"W 116°7'0"W 116°6'30"W 116°6'0"W 116°5'30"W 116°5'0"W 116°4'30"W 116°4'0"W 116°3'30"W 116°3'0"W 116°2'30"W 116°2'0"W 116°1'30"W 116°1'0"W 116°0'30"W 116°0'0"W