

# County Line Incident Action Plan

**August 26, 2018**  
**Day Operational Period**  
**0600 PST – 2200 PST**

NV-NNS-010324  
PN L30A



## Team Meeting Schedule

0600 PST – ICP Briefing  
1900 PST – Planning Meeting

**GPS**  
40° 37' 48"  
-116° 5' 36"

County Line Fire



<https://goo.gl/kHJZxe>

## INCIDENT OBJECTIVES (ICS 202)

<b>1. Incident Name:</b> County Line	<b>2. Operational Period:</b> Date From: 8/26/2018      Date To: 8/26/2018 Time From: 0600    Time To: 2200															
<b>3. Objective(s):</b>  1. The number one priority is to provide for firefighter and public safety.  2. Take the necessary precautions to protect the community of Carlin, nearby ranches, residents in Pine Valley, the nearby Emigrant Mine and transportation corridors to minimize the threat to public safety.  3. Limit fire intensity in riparian areas to protect Lahontan Cutthroat trout habitat in Trout Creek and Dixie Creek. Keep retardant three hundred feet on either side of all riparian areas.  4. Take appropriate action to minimize fire size and intensity to protect Greater Sage-grouse habitat, and mule deer habitat in the Pinion Mountain Range.  5. Keep the fire east of highway 278, south of the Emigrant Mine road, west of Beards Creek and Emigrant Spring, and north of Ferdelford Creek and out of the old Bullion Mine cultural alert zone.																
<b>4. Operational Period Command Emphasis:</b> Fight fire aggressively having provided for safety first. Use tactics that have the greatest probability for success considering associated risks to firefighters and the public.  Get out early hit the fire hard, and secure the fire perimeter ahead of the predicted frontal passage.																
<b>General Situational Awareness</b> There have been multiple medical incidents and accidents taking place on incidents within the Great Basin. Be aware that there is significant potential for extreme fire behavior and rapid rates on spread on any incident within the geographical area.  Reminder it is not business as usual, adjust tactics accordingly to compensate for extreme fire behavior and rapid rates of spread. Always have LCES in place, and never break the 10 standard firefighting orders, and 18 watch-out situations.																
<b>5. Site Safety Plan Required?</b> Yes <input type="checkbox"/> No <input checked="" type="checkbox"/> <b>Approved Site Safety Plan(s) Located at:</b>																
<b>6. Incident Action Plan</b> (the items checked below are included in this Incident Action Plan): <table style="width: 100%; border: none;"> <tr> <td style="width: 33%;"><input checked="" type="checkbox"/> ICS 202</td> <td style="width: 33%;"><input checked="" type="checkbox"/> ICS 206</td> <td style="width: 34%;"><b>Other Attachments:</b></td> </tr> <tr> <td><input checked="" type="checkbox"/> ICS 203</td> <td><input type="checkbox"/> ICS 207</td> <td><input checked="" type="checkbox"/> Medical Incident Report</td> </tr> <tr> <td><input checked="" type="checkbox"/> ICS 204</td> <td><input type="checkbox"/> ICS 208</td> <td><input type="checkbox"/> _____</td> </tr> <tr> <td><input checked="" type="checkbox"/> ICS 205</td> <td><input checked="" type="checkbox"/> Map/Chart</td> <td><input type="checkbox"/> _____</td> </tr> <tr> <td><input type="checkbox"/> ICS 205A</td> <td><input checked="" type="checkbox"/> Weather Forecast/Tides/Currents</td> <td><input type="checkbox"/> _____</td> </tr> </table>		<input checked="" type="checkbox"/> ICS 202	<input checked="" type="checkbox"/> ICS 206	<b>Other Attachments:</b>	<input checked="" type="checkbox"/> ICS 203	<input type="checkbox"/> ICS 207	<input checked="" type="checkbox"/> Medical Incident Report	<input checked="" type="checkbox"/> ICS 204	<input type="checkbox"/> ICS 208	<input type="checkbox"/> _____	<input checked="" type="checkbox"/> ICS 205	<input checked="" type="checkbox"/> Map/Chart	<input type="checkbox"/> _____	<input type="checkbox"/> ICS 205A	<input checked="" type="checkbox"/> Weather Forecast/Tides/Currents	<input type="checkbox"/> _____
<input checked="" type="checkbox"/> ICS 202	<input checked="" type="checkbox"/> ICS 206	<b>Other Attachments:</b>														
<input checked="" type="checkbox"/> ICS 203	<input type="checkbox"/> ICS 207	<input checked="" type="checkbox"/> Medical Incident Report														
<input checked="" type="checkbox"/> ICS 204	<input type="checkbox"/> ICS 208	<input type="checkbox"/> _____														
<input checked="" type="checkbox"/> ICS 205	<input checked="" type="checkbox"/> Map/Chart	<input type="checkbox"/> _____														
<input type="checkbox"/> ICS 205A	<input checked="" type="checkbox"/> Weather Forecast/Tides/Currents	<input type="checkbox"/> _____														
<b>7. Prepared by:</b> Name: <u>Tiege Downes</u> Position/Title: <u>ICT3 (T)</u> Signature: _____																
<b>8. Approved by Incident Commander:</b> Name: <u>Carrie Thaler</u> Signature: <u><i>Carrie Thaler</i></u>																
ICS 202	IAP Page _____	Date/Time: <u>8/25/2018</u>														



## ORGANIZATION ASSIGNMENT LIST (ICS 203)

<b>1. Incident Name:</b> County Line		<b>2. Operational Period:</b> Date From: 8/26/2018 Date To: 8/26/2018 Time From: 0600 Time To: 2200	
<b>3. Incident Commander(s) and Command Staff:</b>		<b>7. Operations Section:</b>	
IC/UCs	Carrie Thaler	Chief	Jay Bertek
	Tiege Downes IC (T)	Deputy	Justin Bedard (T)
Deputy		Planning Operations	
Safety Officer	Nick Robison (T)	Staging Area	
Public Info. Officer	Marnie Bonesteel	<b>Branch</b>	
Liaison Officer		Branch Director	
		Deputy	
<b>4. Agency/Organization Representatives:</b>		Division/Group	A-Kelley Harper
Agency/Organization	Name	Division/Group	Z-Grant Gifford
AA Tuscarora Field Mgr	Melanie Peterson	Division/Group	K-Scott Robison
AA(T) Asst Field Mgr	Jared Foruria	Division/Group	M-Britt McKiel
Agency Rep NDF	Brett Waters	Division/Group	
		<b>Branch</b>	
		Branch Director	
		Deputy	
<b>5. Planning Section:</b>		Division/Group	
Chief	Jeannie Duncan (T)	Division/Group	
Deputy	John Martel	Division/Group	
Resources Unit	Ravonn Simpson PSC3 (T)	Division/Group	
Situation Unit		Division/Group	
Documentation Unit		<b>Branch</b>	
Demobilization Unit		Branch Director	
Technical Specialists		Deputy	
GISS	Katy Guley (T)	Division/Group	
GISS	Christa Braun (T)	Division/Group	
GISS	Donovan Wilson (T)	Division/Group	
<b>6. Logistics Section:</b>		Division/Group	
Chief	Josue Gonzalez	Division/Group	
Deputy	Tammy Wodarczak LSC3 (T)	<b>Air Operations Branch</b>	
<b>Support Branch</b>		Air Ops Branch Dir.	Mike Mallozzi
Director	Anna O'Brien LSC3 (T)		
Supply Unit	Joe Smith LSC3 (T)		
Facilities Unit	George Stuart ORDM (T)	<b>8. Finance/Administration Section:</b>	
Ground Support Unit		Chief	Sierra Brewer FSC3
<b>Service Branch</b>		Deputy	Kel's Martinez FSC3
Director		Time Unit	Joanne Vigil PTRC (T)
Communications Unit		Procurement Unit	Leta Donohue PTRC (T)
Medical Unit	Dennis McLane	Comp/Claims Unit	
Food Unit		Cost Unit	
<b>9. Prepared by:</b> Name: Tiege Downes Position/Title: IC13 (T) Signature: _____			
ICS 203	IAP Page _____	Date/Time: 8/25/2018	

Spot Forecast for County Line...Thaler Team 2, Type 3

...RED FLAG WARNING IN EFFECT FROM 11 AM TO 11 PM PDT SUNDAY...

.DISCUSSION...Very dry conditions will persist through Sunday evening with critical fire weather conditions expected. A Red Flag Warning is in effect from 11 AM until 11 PM PDT Sunday for gusty winds and low RHs. Daytime heating and an approaching upper-level trough with stronger winds aloft will cause southwest to west winds to increase on Sunday afternoon and early evening with gusts up to 35 mph likely.

.SUNDAY...

Sky/weather.....Mostly sunny. Haze in the afternoon.  
Chc Wetting Rain....0%.  
LAL.....1.  
Max temperature....77-82.  
Min humidity.....8-12%.  
20-Foot Winds.....  
Slope/valley.....Upslope/up valley winds 4 to 8 mph becoming  
west 12 to 18 mph with gusts up to 35 mph  
in the mid to late afternoon.  
Mixing Height.....11300 ft AGL.  
Transport Winds....Southwest around 25 mph.  
Haines Index.....4.

.SUNDAY NIGHT...

Sky/weather.....Mostly clear. Haze in the evening.  
Chc Wetting Rain....0%.  
LAL.....1.  
Min temperature....47-52.  
Max humidity.....30-40%.  
20-Foot Winds.....  
Slope/valley.....West winds 12 to 18 mph with gusts up to 35 mph  
early in the evening before diminishing after dark.  
Mixing Height.....7900 ft AGL early in the morning.  
Transport Winds....West around 30 mph.  
Haines Index.....4.

.MONDAY...

Sky/weather.....Mostly sunny.  
Chc Wetting Rain....0%.  
LAL.....1.  
Max temperature....69-74.  
Min humidity.....17-22%.  
20-Foot Winds.....  
Slope/valley.....Upslope/up valley winds 4 to 8 mph becoming  
west 12 to 14 mph with gusts to around 19 mph  
in the afternoon.  
Mixing Height.....7900 ft AGL.  
Transport Winds....West around 18 mph.  
Haines Index.....2.

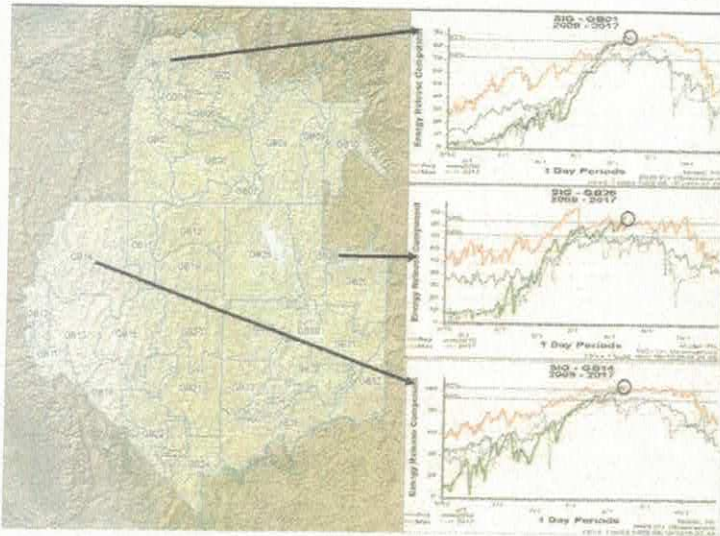


# Fuels and Fire Behavior Advisory

## Northern Great Basin – below 7000'

August 13, 2018 – August 27, 2018

**Subject:** Significant carryover fine fuels from the 2017 fire season exist over Western and Northern Nevada, southern Idaho and northwest Utah with multiple new crops of cheat grass from a wet 2018 spring. Continuous fine fuel loading 200-300% of average in many areas. These dry fine fuels, along with near record low 100-hr, 1000-hr fuel moisture, record high ERC's and dry brush will drive advanced to extreme fire behavior over Western and Northern Nevada, northern Utah and across most of Southern and Central Idaho, mostly in areas below 7,000 feet.



**Discussion:** Extreme fire behavior has been observed on recent fires in these areas with several fires recently growing over 20,000 acres in a 24 hour burn period.

**Difference from normal conditions:** Fine fuel loading is 200-300% of normal in many low-mid elevations of northern Nevada, and only slightly less in Idaho and northern Utah. Across mid-high elevations, heavy fuels are critically dry and ERC levels are near or at new historical highs for the time of year for many parts across the advisory area. Sagebrush live fuel moisture is now below critical levels making sagebrush a significant contributor to fire spread in addition to the significant dead fine fuel load.

### Concerns to Firefighters and the Public:

- Anticipate rapid rates-of-spread, even in the absence of slope and wind. You can't out run it!
- Anticipate flashy fine fuels and pinyon-juniper to ignite easily and exhibit advanced rates of spread, elongated flaming fronts and increasing fire brands; expect more long range spotting
- Short and mid-range spotting in fine fuels is possible with wind gusts, fire whirls, and frequent dust devils creating spotting potential greater than 1/2 mile in grass / sage fuel types with a probability of ignition generally over 90% based on current weather. Fine fuel loadings are dense and continuous and will support extreme rates of spread regardless of fuel heights.
- Under the right atmospheric conditions, fires in dense, heavier fuels can develop into large plume dominated fires.

### Mitigation Measures:

- Direct attack may not be feasible in many circumstances and use of indirect attack measures may be necessary.
- Ensure you are planning well ahead of the fire.
- Choose the best ridge not the next ridge.
- Expect long-range spotting of up to a mile or more with well-developed columns.
- Retardant NOT effective unless immediately followed up with firefighters and/or bucket drops.

**Issued By:** GBCC Predictive Services, Basil Newmerzhucky, Shelby Law (Meteorologists)

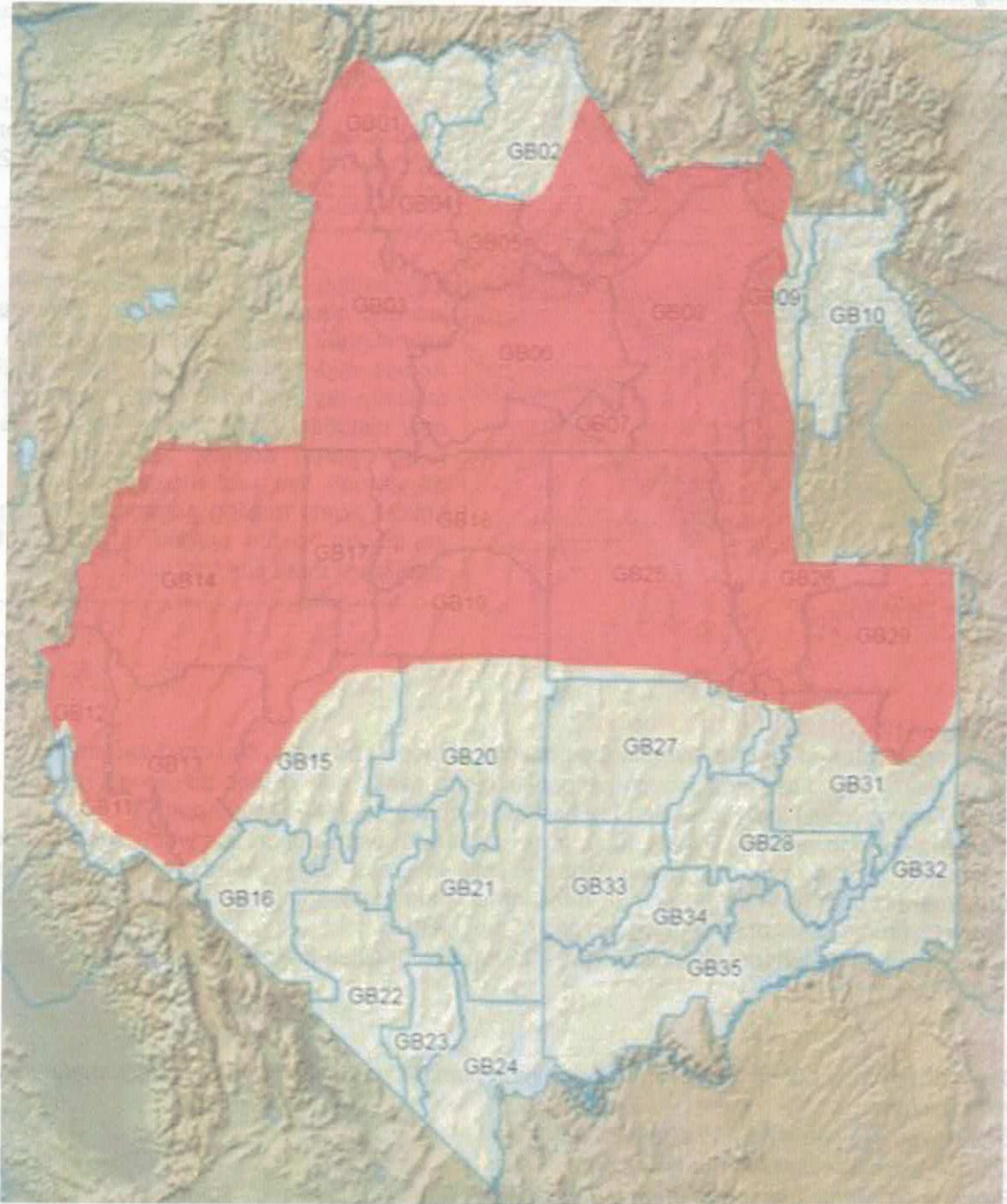


# Fuels and Fire Behavior Advisory

## Northern Great Basin

August 13, 2018 – August 27, 2018

**Area of Concern:** The area of concern includes western and northern Nevada, northern Utah and much of Idaho below 7000'.



# DIVISION/GROUP ASSIGNMENT LIST (ICS 204 WF)

Controlled Unclassified Information//Basic

1. Incident Name			3.			
County Line			Branch	Division <b>ALPHA</b>		
2. Operational Period Day						
Date/Time From: 08/26/2018 Sun		Date/Time To: 08/26/2018 Sun				
4. Operations Personnel						
Operations Chief		Jay Bertek/ Justin Bedard (T)		Division/Group Supervisor		Kelly Harper
Branch Director				Air Attack Supervisor		Mike Mallozzi
5. Resources Assigned this Period						
Strike Team/Task Force/ Resource Designator	EMT	LWD	Leader	Number Persons	Drop Off PT./Time	Pick Up PT./Time
Task Force 14			Paul Naman/ Rob Headley	2	ICP/0600	ICP/2000
HCQB			Loran Anderson	1	ICP/0600	ICP/2000
DOZER DG			John Simpson	2	ICP/0600	ICP/2000
WT Sundance			Pete Munico	2	ICP/0600	ICP/2000
ENG Trail Blazer 08			Ed Randall	3	ICP/0600	ICP/2000
ENG Rocky Point 117			Scott VanBuerum	3	ICP/0600	ICP/2000
ENG Outback E15			Jason Kava	3	ICP/0600	ICP/2000
WT All Seasons			Ed Kigore	1	ICP/0600	ICP/2000
ELY 1				20	ICP/0600	ICP/2000
6. Control Operations/Work Assignments:						
Utilize appropriate suppression actions to keep fire growth to a minimum. Secure and mop up where needed.						
7. Special Instructions:						
GPS all dozer lines/fence repair and provide location to SIT						
Continued--Page 1 of 2						
8. Division/Group Communication Summary						
Function	Channel	RX Frequency N/W	RX Tone/NAC	TX Frequency N/W	TX Tone/NAC	Mode
Command		See ICS-205		See ICS-205		
Tactical Div/Group		See ICS-205		See ICS-205		
Logistics						
Air to Ground		See ICS-205		See ICS-205		
9. Prepared by (Resource Unit Leader)			Approved by (Planning Section Chief)		Date	Time
Ravonn Simpson			Jeannie Duncan		8/25/18	1700



# DIVISION/GROUP ASSIGNMENT LIST (ICS 204 WF)

Controlled Unclassified Information//Basic

<b>1. Incident Name</b>			<b>3.</b>			
<b>County Line</b>			<b>Branch</b>	<b>Division</b> <b>KILO</b>		
<b>2. Operational Period</b>						
<b>Day</b>						
<b>Date/Time From:</b> 08/26/2018 SUN		<b>Date/Time To:</b> 08/26/2018 SUN				
<b>4. Operations Personnel</b>						
<b>Operations Chief</b>		Jay Bertek/ Justin Bedard (T)		<b>Division/Group Supervisor</b>		Scott Robison
<b>Branch Director</b>				<b>Air Attack Supervisor</b>		Mike Mallozzi
<b>5. Resources Assigned this Period</b>						
<b>Strike Team/Task Force/ Resource Designator</b>	<b>EMT</b>	<b>LWD</b>	<b>Leader</b>	<b>Number Persons</b>	<b>Drop Off PT./Time</b>	<b>Pick Up PT./Time</b>
Task Force 1			Kevin Drake		ICP/0600	ICP/2000
Heat Seeker 21			Loran Anderson	3	ICP/0600	ICP/2000
HEQB			Tom Franklin/ Peter Tormherz	2	ICP/0600	ICP/2000
DZ Stokmans T-2				2	ICP/0600	ICP/2000
Heat Seekers 17			Paul Naman/ Rob Headley	3	ICP/0600	ICP/2000
76 Brian Head				2	ICS/0600	ICP/2000
Alpine 8				3	ICS/0600	ICP/2000
J3 - 15 (T6)				3	ICS/0600	ICP/2000
J3 - 09 (T3)					ICS/0600	ICP/2000
Twin Peaks 2IA				20	ICS/0600	ICP/2000
<b>6. Control Operations/Work Assignments:</b>						
Utilize appropriate suppression actions to keep fire growth to a minimum. Secure and mop up where needed. Secure and mop up slop over.						
<b>7. Special Instructions:</b>						
GPS all dozer lines/fence repairs and provide location to SIT						
<b>8. Division/Group Communication Summary</b>						
<b>Function</b>	<b>Channel</b>	<b>RX Frequency N/W</b>	<b>RX Tone/NAC</b>	<b>TX Frequency N/W</b>	<b>TX Tone/NAC</b>	<b>Mode</b>
Command		See ICS-205		See ICS-205		
Tactical Div/Group		See ICS-205		See ICS-205		
Logistics						
Air to Ground		See ICS-205		See ICS-205		
<b>9. Prepared by (Resource Unit Leader)</b>			<b>Approved by (Planning Section Chief)</b>		<b>Date</b>	<b>Time</b>
Ravonn Simpson			Jeannie Duncan		8/25/18	1700



# DIVISION/GROUP ASSIGNMENT LIST (ICS 204 WF)

Controlled Unclassified Information//Basic

<b>1. Incident Name</b>		<b>3.</b>				
County Line		Branch	Division <b>MIKE</b>			
<b>2. Operational Period</b> Day						
Date/Time From: 08/26/2018 SUN	Date/Time To: 08/26/2018 Sun					
<b>4. Operations Personnel</b>						
Operations Chief	Jay Bertek/ Justin Bedard (T)	Division/Group Supervisor	Britt McNiell			
Branch Director		Air Attack Supervisor	Mike Mallozzi			
<b>5. Resources Assigned this Period</b>						
Strike Team/Task Force/ Resource Designator	EMT	LWD	Leader	Number Persons	Drop Off PT./Time	Pick Up PT./Time
E-1662			Ricky Rios	4	ICP/0600	ICP/2000
E-5261			Eniss	3	ICP/0600	ICP/2000
Dozer 1806 With HEQB			Dodson	3	ICP/0600	ICP/2000
WT-22			Mike Meadows	1	ICP/0600	ICP/2000
White MTN T2IA		9/7	Owen Smith	20	ICP/0600	ICP/2000
<b>6. Control Operations/Work Assignments:</b> Utilize appropriate suppression actions to keep fire growth to a minimum. Secure and mop up where needed.						
<b>7. Special Instructions:</b> GPS all dozer lines and provide location to SIT.						
<b>8. Division/Group Communication Summary</b>						
Function	Channel	RX Frequency N/W	RX Tone/NAC	TX Frequency N/W	TX Tone/NAC	Mode
Command		See ICS-205		See ICS-205		
Tactical Div/Group		See ICS-205		See ICS-205		
Logistics						
Air to Ground		See ICS-205		See ICS-205		
<b>9. Prepared by (Resource Unit Leader)</b> Ravonn Simpson			<b>Approved by (Planning Section Chief)</b> Jeannie Duncan		<b>Date</b> 8/25/18	<b>Time</b> 1700

# DIVISION/GROUP ASSIGNMENT LIST (ICS 204 WF)

Controlled Unclassified Information//Basic

<b>1. Incident Name</b>				<b>3.</b>				
County Line				Branch		Division		
2. Operational Period Day				ZULU				
Date/Time From: 08/26/2018 SUN		Date/Time To: 08/26/2018 SUN						
<b>4. Operations Personnel</b>								
Operations Chief		Jay Bertek/ Justin Bedard (T)		Division/Group Supervisor		Grant Gifford		
Branch Director				Air Attack Supervisor		Mike Mallozzi		
<b>5. Resources Assigned this Period</b>								
Strike Team/Task Force/ Resource Designator		EMT	LWD	Leader		Number Persons	Drop Off PT./Time	Pick Up PT./Time
TF 15				AL Stevens		1	ICP/0600	ICP/2000
Brush 22				Robbie Ranft		3	ICP/0600	ICP/2000
Dirtwerkz Dozer				Tim Palley		1	ICP/0600	ICP/2000
E-11				Joey Wilkinson		4	ICP/0600	ICP/2000
E-41				Mike Spect		3	ICP/0600	ICP/2000
E-464				Scott Haney		4	ICP/0600	ICP/2000
E-133				Michael Anderson		3	ICP/0600	ICP/2000
WT-229				Tyler Quintano		2	ICP/0600	ICP/2000
Medic				Bill Denoe				
<b>6. Control Operations/Work Assignments:</b>								
Utilize appropriate suppression actions to keep fire growth to a minimum. Secure and mop up where needed.								
<b>7. Special Instructions:</b>								
GPS all dozer lines and provide location to SIT.								
<b>8. Division/Group Communication Summary</b>								
Function	Channel	RX Frequency N/W	RX Tone/NAC	TX Frequency N/W	TX Tone/NAC	Mode		
Command		See ICS-205		See ICS-205				
Tactical Div/Group		See ICS-205		See ICS-205				
Logistics								
Air to Ground		See ICS-205		See ICS-205				
<b>9. Prepared by (Resource Unit Leader)</b> Ravonn Simpson				<b>Approved by (Planning Section Chief)</b> Jeannie Duncan		Date 8/25/18	Time 1700	



# DIVISION/GROUP ASSIGNMENT LIST (ICS 204 WF)

Controlled Unclassified Information//Basic

<b>1. Incident Name</b>				<b>3.</b>			
County Line				Branch	Division <b>NIGHT SHIFT</b>		
<b>2. Operational Period</b> Night							
Date/Time From: 08/26/2018 SUN		Date/Time To: 08/27/2018 MON					
<b>4. Operations Personnel</b>							
Operations Chief	Jay Bertek/ Justin Bedard (T)			Division/Group Supervisor	Jay Beckstrand/Eddie Herrera (T)		
Branch Director				Air Attack Supervisor	Mike Mallozzi		
<b>5. Resources Assigned this Period</b>							
Strike Team/Task Force/ Resource Designator	EMT	LWD	Leader	Number Persons	Drop Off PT./Time	Pick Up PT./Time	
Gooding E-39			Steve Thompson	3	ICP/0600	ICP/1900	
Trail Blazer E-39			Shelby Talbott	3	ICP/0600	ICP/1900	
<b>6. Control Operations/Work Assignments:</b> Utilize appropriate suppression actions to keep fire growth to a minimum. Secure and mop up where needed. Continue to monitor and relay any fire activity							
<b>7. Special Instructions:</b>							
<b>8. Division/Group Communication Summary</b>							
Function	Channel	RX Frequency N/W	RX Tone/NAC	TX Frequency N/W	TX Tone/NAC	Mode	
Command		See ICS-205		See ICS-205			
Tactical Div/Group		See ICS-205		See ICS-205			
Logistics							
Air to Ground		See ICS-205		See ICS-205			
<b>9. Prepared by (Resource Unit Leader)</b> Ravonn Simpson			<b>Approved by (Planning Section Chief)</b> Jeannie Duncan		Date 8/25/18	Time 1700	

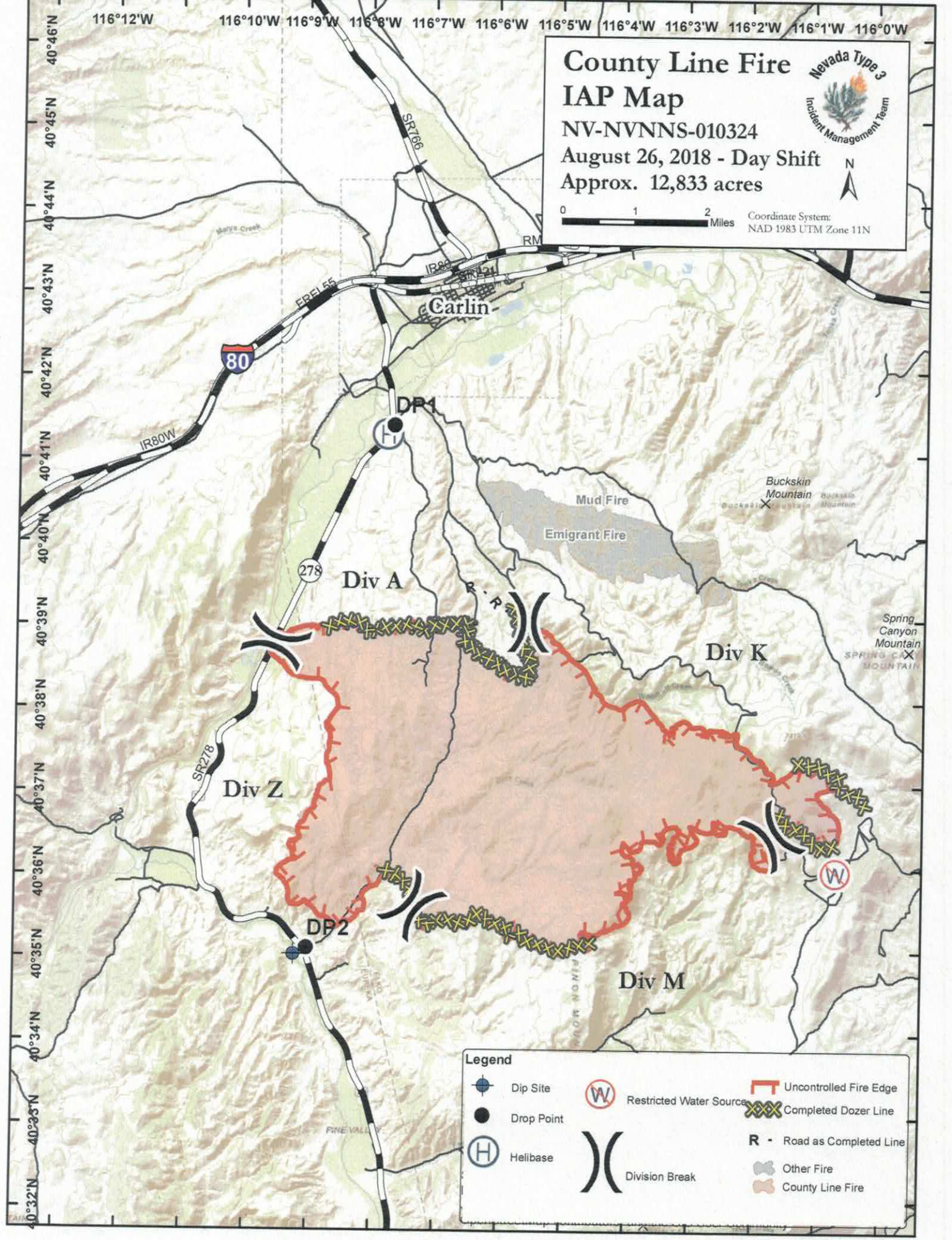
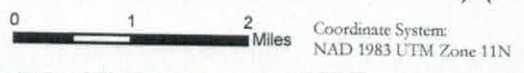




# County Line Fire IAP Map



NV-NVNNNS-010324  
 August 26, 2018 - Day Shift  
 Approx. 12,833 acres



**Legend**

- Dip Site
- Drop Point
- Helibase
- Restricted Water Source
- Uncontrolled Fire Edge
- Completed Dozer Line
- R - Road as Completed Line
- Division Break
- Other Fire
- County Line Fire



# HEALTH AND SAFETY MESSAGE

*SAFETY starts with YOU*

We are **ALL** accountable for **SAFE** behaviors

INCIDENT: County Line Fire

DATE: 08/26/2018

Oper. Period: 0600-2200

**Major Hazards and Risks: Weather change, Large fire growth, Wind Shifts. Fatigue, HRI**

Fire Order of the Day – Initiate all actions based on current weather and expected fire behavior

Narrative: **Be Heads Up. Maintain Heighten Situation Awareness at all times. Weather ops during the shift will give you an early warning. Call out weather ops over tac during the shift. LCES. Take Care**

## Watch Out Situation of the Day



11. UNBURNED FUEL BETWEEN YOU AND THE FIRE

## Look Up, Look Down, Look Around

\***Look Up:** Check the sky for any weather changes such as wind shifts or increasing in speed. Watch for air operations and water drops. Look for snags and weakened branches in the black and green.

\***Look Down:** Watch your footing.

\* **Look Around** Check fuel loading in the area, general terrain, current fire behavior and ladder fuels. Keep an eye on fellow firefighters. See something say something. Grid the green for spot fires.

Incident Safety Officers: **Nick Robison (t)**



Incident Risk Assessment Worksheet		1. Incident Name/Number County Line Fire		2. Location Carlin, NV					
Identification of Hazards and Risk Assessment		3. Name and Title of Analyst Nick Robison SOFR(t)		4. Date Sunday, August 26, 2018					
5. Pre-Control		7. Post-Control							
8. Location	9. Hazard	10. Hazard Probability	11. Severity Code	12. RAC	13. Hazard Probability	14. Severity Code	15. RAC	16. Acceptable (Yes/No)	Export (Yes/No)
All	Communications	Frequently A	Catastrophic I	Critical	Frequently A	Catastrophic I	Critical	Yes	Yes
All	Extreme Fire Behavior	Frequently A	Catastrophic I	Critical	Likely B	Catastrophic I	Critical	Yes	Yes
All	Driving & Traffic	Frequently A	Catastrophic I	Critical	Occasional C	Catastrophic I	Serious	Yes	Yes
All	Heavy Equipment Operations	Frequently A	Catastrophic I	Critical	Occasional C	Catastrophic I	Serious	Yes	Yes

**6. Control or Abatement Action (Engineering, Administrative, PPE, Avoidance, Education, etc)**  
**Actions**  
(double-click in cell then click alt + enter to add a line)  
~ Maintain communication with aviation resources, and suppression organization.  
~ Ensure all know frequency and protocol for contacting resources.  
~ Utilize the ICS 205.  
~ Utilize human repeaters when working in dead spots.  
~ Share weather observations with all personnel assigned to division.  
~ Establish "Trigger Points" to withdraw.  
~ Use "Risk Management" process prior to engaging in suppression actions, refer to page 1, IRPG.  
~ Practice "Defensive Driving" techniques traveling on all roads and city streets.  
~ Use spotters when backing.  
~ Honk horn to alert personnel when backing.  
~ Keep clutter off dash and inside cab.  
~ Follow Driving LCES (Lights, Chock blocks, Emergency brake, Seat belts.  
~ Always use headlights.  
~ Yield to pedestrians and bicycles.  
~ Observe posted speed limits.  
~ Use the 3 second rule for following distance when driving.  
~ Use chock blocks, turn wheels into hill.  
~ Avoid distractions (eating, cell phones, radio).  
~ Ensure that windshields are kept clean of dust and bugs.

~ Ensure communications are established with operators.  
~ Use hand signals if other communications are unavailable.  
~ Maintain a 50'-100' exclusion area around equipment and increase it to 1 1/2 times tree height when in timber.  
~ Use a spotter when backing.  
~ Avoid working below heavy equipment.

All	Severe Weather	Frequently A	Catastrophic I	Critical	<ul style="list-style-type: none"> <li>- Review and follow Thunderstorm Safety guidelines in IRPG page 21.</li> <li>- Observe 30/30 Rule for lightning safety.....page 21, IRPG.</li> <li>- Establish "Trigger Points" to withdraw, and ensure all know rally site.</li> <li>- Use "Risk Management" process to determine retreat criteria and actions.</li> <li>- Carry rain gear and extra food and water if weather limits retreat to ICP.</li> </ul>	Occasional C	Catastrophic I	Serious	Yes	Yes
All	Helicopter Operations	Frequently A	Catastrophic I	Critical	<ul style="list-style-type: none"> <li>- Stay clear of all bucket drops when suppression actions are in place and allow 1 minute prior to re-entry.</li> <li>- Monitor A-G communications.</li> <li>- Follow aviation safety guidelines in IRPG and IHOG.</li> <li>- Maintain high visibility in work area and wear vest while in roadway.</li> <li>- Use glow sticks to mark hazards.</li> <li>- Ensure personnel have a personal light (headlamp).</li> <li>- Watch for signs of fatigue.</li> <li>- Take breaks away from areas of known hazard.</li> </ul>	Rarely D	Catastrophic I	Moderate	Yes	Yes
All	Night Operations	Frequently A	Catastrophic I	Critical	<ul style="list-style-type: none"> <li>- Avoid identified Hazmat and UXO areas</li> <li>- Use "Unexploded Ordnance Safety" guidelines IRPG Page 27</li> <li>- Deny entry to others. Do not transmit on radio if in proximity</li> <li>- Map location of all UXO and Hazmat.</li> </ul>	Rarely D	Catastrophic I	Moderate	Yes	Yes
All	Unidentified Hazardous Waste and Unexploded Ordnance	Rarely D	Catastrophic I	Moderate	<ul style="list-style-type: none"> <li>- Drink 1 quart of water each hour during and after work.</li> <li>- Rotate crews out of smoky areas.</li> <li>- Set a reasonable work pace and allow adequate rest breaks while on the project.</li> <li>- Stagger work crews start time to limit fatigue.</li> <li>- Use buddy system to monitor personnel of heat related and fatigue issues.</li> <li>- Follow work / rest guidelines.</li> </ul>	Likely B	Critical II	Serious	Yes	Yes
All	Fatigue & Over Exertion	Likely B	Critical II	Serious	<ul style="list-style-type: none"> <li>- Drink Fluids throughout operational period (6-8 qts/shift).</li> <li>- Maintain water/electrolyte ratio of 3 to 1.</li> <li>- Carry extra water on line and cache water at drop points.</li> <li>- Take Frequent breaks, minimum of 10 minutes every hour.</li> <li>- Allow out of area resources time to acclimatize before expecting peak performance.</li> <li>- Recognize symptoms of HEAT RELATED ILLNESS which include. <ul style="list-style-type: none"> <li>o Lack of energy</li> <li>o Headaches, dizziness</li> <li>o Lack of rest</li> <li>o No hunger, poor eating habits</li> <li>o Hot skin, and lack of sweating</li> </ul> </li> </ul>	Likely B	Critical II	Serious	Yes	Yes



All	Steep Terrain & Rolling Debris	Frequently A	Critical II	Critical	<ul style="list-style-type: none"> <li>~ Maintain 8'-10' spacing when working &amp; walking.</li> <li>~ Don't work above any personnel.</li> <li>~ Be on the lookout for rolling rocks, debris, or burning material.</li> <li>~ Evaluate necessity to send personnel in areas with limited access.</li> <li>~ Post lookouts (IRPG pg 6).</li> <li>~ Do not work directly above or below personnel during firing and mop-up operations.</li> <li>~ Watch for falling and rolling debris on steep slopes.</li> <li>~ Alert crew personnel of rolling debris by yelling to affected individuals.</li> <li>~ Position debris that could roll vertically on slope.</li> <li>~ Avoid stepping over debris that could roll by walking around object.</li> <li>~ Avoid radiant heat by wearing appropriate PPE correctly.</li> <li>~ Use correct tool for task assigned.</li> <li>~ Follow power line safety protocol as outlined on page 22 in IRPG.</li> <li>~ Flag and isolate all HAZMAT and alert all personnel working in Division.</li> <li>~ Follow WUI recommendations on pages 10-11 in IRPG.</li> </ul>	Occasional C	Critical II	Moderate	Yes	Yes
All	Fireline Hazards	Frequently A	Significant III	Serious		Occasional C	Significant III	Minor	Yes	Yes

INCIDENT RADIO COMMUNICATIONS PLAN		Incident Name COUNTY LINE FIRE			Date/Time Prepared 8/25 1700		Operational Period Date/Time 8/26 0600 to 8/27 0600				
Ch #	Function	Channel Name/Trunked Radio System Talkgroup	Assignment	RX Freq	N or W	RX Tone/NAC	TX Freq	N or W	TX Tone/NAC	Mode A, D or M	Remarks
1	Repeater	CMD 1		173.0375	N	141.3	167.3250	N	141.3	A	SE side of Fire
2	Repeater	SWALES		171.5375	N	110.9	163.5750	N	103.5	A	N of Fire
3	Repeater	NDF MARY		158.8950	N		151.2200	N	136.5	A	NW of Fire
4	Tactical	TAC 1	DIV A	166.7250	N	141.3	166.7250	N	141.3	A	
5	Tactical	TAC 2	DIV K	166.7750	N	141.3	166.7750	N	141.3	A	
6	Tactical	TAC 3	DIV Z	166.2500	N	141.3	166.2500	N	141.3	A	
7	Tactical	TAC 4	DIV M	168.6000	N	141.3	168.6000	N	141.3	A	
8	IA Tactical	BLM SOA		171.6750	N		171.6750	N		A	
9	IA Tactical	RED 1		159.3450	N		159.3450	N		A	
10	IA Tactical	RED 2		158.8650	N		158.8650	N		A	
11	IA Tactical	RED 3		172.3750	N		172.3750	N		A	
12	Medical	VMED28		155.3400	N		155.3400	N	156.7	A	
13	IA	A/G 49		168.0375	N		168.0375	N		A	
14	Air to Ground	A/G 1		169.6500	N		169.6500	N		A	
15	Air to Ground	A/G 2		169.8125	N		169.8125	N		A	
16	Air Guard	AIRGUARD		168.6250	N		168.6250	N	110.9	A	

Prepared by (Communications Unit)

Incident Location Carlin  
 County Elko  
 State NV  
 Latitude  
 Longitude  
 W

The convention calls for frequency lists to show four digits after the decimal place, followed by either an "N" or a "W", depending on whether the frequency is narrow or wide band. Mode refers to either "A" or "D" indicating analog or digital (e.g. Project 25) or "M" indicating mixed mode. All channels are shown as if programmed in a control station, mobile or portable radio. Repeater and base stations must be programmed with the Rx and Tx reversed.



## **What to look for on the fireline.....for the RESOURCE ADVISORS**

**-if anyone sees downed fences, cut fences, or broken gates please take photos and gps points so these locations can be added to the suppression repair plan**

**-please report any burned over or injured animals (especially cattle) with gps location and photos**

**-if any cultural resources (arrow heads, stone flakes, glass bottles, etc.) are seen disturbed in dozer line or hand line please report with gps location and photos**

**-any areas that have retardant across active water should be reported with gps location and photos**

**All of these things can be reported to the County Line Fire REAF crew at  
or to as soon as they are discovered.**

### **Mop Up:**

**Fuel type: grass/sage: 100 ft in on both lined and unlined (cold trailed) edge.**

**Fuel type: pinyon/juniper: 200 ft in on both lined and unlined (cold trailed) edge.**

**Fuel type: mountain brush (ceanothus, mountain mahogany, snowbank aspen): 200 ft in on both lined and unlined (cold trailed) edge.**

**Dozer lines: all berms and cat piles broken apart to uncover buried hot embers.**

### **Turn Back Standards:**

**Fuel type: grass/sage: No visible smokes within 100 ft for 24 hrs.**

**Fuel type: pinyon/juniper and mountain brush: No visible smokes within 200 ft for 48 hrs.**

<b>Resource Advisor</b>	<b>Incident Name</b> County Line Fire	<b>Date/Time Prepared</b> 08/25/2018 10:00	<b>Prepared by</b> Dan Broockmann, REAF Troy Maikis, REAF(t)
	<b>Operational Period</b> DATE (DAY)		

<b>Staffing</b>	<b>Name</b>	<b>Assignment/Division</b>	<b>Contact</b>
	Dan Broockmann	DIVISIONS ASSIGNED TO	REAF Broockmann (208) 954-4571
	Troy Maikis (t)	DIVISIONS ASSIGNED TO	REAF Maikis (480) 236-4532

**RESOURCE OBJECTIVES & OPERATIONAL EMPHASIS**

**HERITAGE/CULTURAL RESOURCES**

- Protect cultural resources.

**WATER QUALITY**

- Avoid negatively impacting natural waters.

**NOXIOUS WEEDS**

- Limit the spread of noxious and invasive weed species.

**SUPPRESSION REPAIR**

- Repair suppression related impacts on the fire.

**RESOURCE PROTECTION STANDARDS**

<b>Heritage &amp; Cultural – Standards</b>	<b>Division/Area</b>
✓ All cultural resources and human remains are protected. <u>Please leave them in place – no collecting.</u> Please coordinate with the READs if cultural resources are found.	All
<b>Water Quality – Standards</b>	
✓ <b>FUEL:</b> Use containment dikes and absorbents at portable pumps, fuel storage and fuel transfer sites; properly store and dispose of all contaminated containment materials, absorbents and rags from the fire; report all spills to the land manager.	All
✓ <b>DOZER LINE:</b> Coordinate with READs previous to attempting repair work on the dozer line.	All
<b>Noxious Weeds – Standards</b>	
✓ <b>WEED WASH:</b> All resources demobilizing from the fire will go through the weed wash before leaving the incident.	All
<b>Suppression Repair - Standards</b>	
<ul style="list-style-type: none"> <li>✓ <b>GENERAL:</b> Follow the suppression repair standards provided by the Elko District (Division Supervisors have a copy of this document) and as outlined below. Limit further soil disturbance.</li> <li>✓ <b>NEW DOZER LINES:</b> <ul style="list-style-type: none"> <li>○ Pull berms and associated material back into the bladed area. Re-contour as possible.</li> <li>○ Spread the brush, limbs, rocks or sod back across the exposed soils of the fireline.</li> <li>○ Discourage off-road travel on dozer lines by ripping the soil or placing boulders, logs, or other natural features on dozer lines where they tie into established roads.</li> <li>○ Remove material from ephemeral drainages. Avoid pushing sediment into draws, wet areas, or waterways.</li> </ul> </li> <li>✓ <b>DOZER LINES ON EXISTING ROADS:</b> <ul style="list-style-type: none"> <li>○ Restore original road width.</li> <li>○ Pull back berm material and brush to side of road or trail.</li> </ul> </li> <li>✓ <b>HANDLINE</b> <ul style="list-style-type: none"> <li>○ Remove "cup trenches" on perimeter line.</li> <li>○ As possible, pull back berms, topsoil, and organic debris to blend with adjacent undisturbed ground.</li> </ul> </li> <li>✓ <b>SLASH PILES</b> <ul style="list-style-type: none"> <li>○ Disperse slash piles along roads and other features to limit the concentration of fuels.</li> </ul> </li> <li>✓ <b>FENCES</b> <ul style="list-style-type: none"> <li>○ Repair fences cut in the course of suppression activities.</li> </ul> </li> <li>✓ <b>GATES</b> <ul style="list-style-type: none"> <li>○ Repair gates damaged in the course of suppression activities as materials for repair are made available.</li> </ul> </li> </ul>	All



## NV IMT3 Team 2 Contact List – County Line Fire

<b>Incident Commander</b>	Carrie Thaler	702-533-9609
Incident Commander (T)	Tiege Downes	702-278-1872
Information PIOF	Marnie Bonesteel	775-221-9225
<b>Safety (T)</b>	Nick Robison	702-285-7338
Med Unit Leader	Dennis McLane	702-461-6977
<b>Operations Section Chief</b>	Jay Bertek	951-805-9362
Operations (T)	Justin Bedard	702-540-9789
Planning Operations	Brian Kitchen	702-281-6706
DIVS (T)	Eric Darragh	775-846-2440
DIVS (T)	Grant Gifford	530-200-6468
DIVS (T)	Kelly Harper	408-981-8811
Air Operations	Mike Mallozzi	928-710-1686
<b>Plans Section Chief</b>	Jeannie Duncan	707-845-5223
PSC3	John Martel	318-880-1860
PSC3 (T)	Ravonn Simpson	626-755-7131
GISS (T)	Christa Braun	208-880-4723
GISS (T)	Katy Gulley	702-908-7207
GISS (T)	Donovan Wilson	231-690-3645
<b>Finance Section Chief</b>	Kel's Martinez	541-643-0794
FSC3	Sierra Brewer	775-720-4105
Personal Time recorder (T)	Joanne Vigil	575-973-0471
Personal Time recorder (T)	Leta Donohue	760-608-0102
<b>Logistics Section Chief</b>	Tammy Wodarczak	541-810-8859 ALT 725-221-1509
LSC3 (T)	Joe Smith	619-675-1015
LSC3 (T)	Anna Obrien	573-239-3085
Ordering Manager (T)	George Stuart	503-410-8761

## COUNTY LINE FIRE MEDICAL PLAN

<b>1. Incident/Project Name</b>	<b>2. Operational Period</b>
County Line Fire	Date/Time 08/26/2018, 0600-2200

3. Ambulance Services			
Name	Complete Address	Phone & EMS Frequency	Advanced Life Support (ALS) Yes      No
Carlin Volunteer Fire Department	121 Hamilton St Carlin, Nevada	775-777-7300	X
Elko County Ambulance	569 Court St Elko, Nevada	775-777-7300	X

4. Air Ambulance Services		
Name	Phone	Type of Aircraft & Capability
Reach Air Med (Elko)	800-338-4045	Rotor, 1 patient, Night Flight
Reach Air Med (Elko)	800-338-4045	Fixed, 2 patients, for Transport of burn and or trauma patients
Military NAS Fallon	AFRCC 800-851-3051 S&R Fallon 775-426-2318 or 2319	Rotor wing, Hoist capable

**LZ for Air Ambulance will be Helibase (Lat: 40° 41.288'N Long: 116° 7.776'W) Elevation 4,900ft**

A/G with Air Ambulance	
NEVCORD1 (VMed28)	RX 155.3400      TX 155.3400      TX CTCSS 156.7

5. Hospitals								
Name Complete Address	GPS Datum – WGS 84 Degrees Decimal Minutes DD° MM.MMM' N - Lat DD° MM.MMM' W - Long		Travel Time Air      Ground		Phone	Helipad Yes   No		Level of Care Facility
						Lat:	Long:	
Northeastern Nevada Regional Hospital 2001 Errecart Blvd Elko	Lat:	N 40 49' 24"	12 min	30 min	775-635-6048	X		General Medical
	Long:	W 115 43' 50"						
University of Utah Health Care 50 N. Medical Dr Salt Lake City	Lat:	N 40 46' 18"	52 min	3h 22min	801-581-2700	X		Burn / Trauma
	Long:	W 111 50' 12"						
Renown Regional Med Center 1155 Mill St. Reno	Lat:	N 39 31' 31"	56 min	3h 49min	775-982-4140	X		Trauma Center
	Long:	W 119 47' 44"						

6. Division   Branch   Group	Area Location Capability	
ALPHA	EMS Responders & Capability:	Aaron Cliburn 208-716-5605
	Equipment Available on Scene:	ALS
	Medical Emergency Channel:	Command
	ETA for Ambulance to Scene:	
	Air:	Minute
	Ground:	Minute
	Approved Helispot:	
	Latitude:	N
	Longitude:	W



## COUNTY LINE FIRE MEDICAL PLAN

6. Division   Branch   Group	Area Location Capability	
<b>KILO</b>	EMS Responders & Capability:	Tyla Northrup 435-979-5285
	Equipment Available on Scene:	BLS
	Medical Emergency Channel:	Command
	ETA for Ambulance to Scene:	
	Air:	Minutes
	Ground:	Minutes
	Approved Helispot:	
	Latitude:	N
	Longitude:	W
<b>MIKE</b>	Area Location Capability	
	EMS Responders & Capability:	
	Equipment Available on Scene:	
	Medical Emergency Channel:	Command
	ETA for Ambulance to Scene:	
	Air:	Minutes
	Ground:	Minutes
	Approved Helispot:	
	Latitude:	N
Longitude:	W	
<b>ZULU</b>	Area Location Capability	
	EMS Responders & Capability:	Bill Denos 915-704-3213
	Equipment Available on Scene:	ALS
	Medical Emergency Channel:	Command
	ETA for Ambulance to Scene:	
	Air:	Minutes
	Ground:	Minutes
	Approved Helispot:	
	Latitude:	N
Longitude:	W	

1. Prepared By (Medical Unit Leader)	2. Date/Time	3. Reviewed By (Safety)	4. Date/Time
Dennis McLane MEDL <b>702-461-6977</b>	08/25/2018	Nick Robison SOFR (T)	08/25/2018

# MEDICAL PLAN (ICS 206 WF)

Controlled Unclassified Information//Basic

## Medical Incident Report

**FOR A NON-EMERGENCY INCIDENT, WORK THROUGH CHAIN OF COMMAND TO REPORT AND TRANSPORT INJURED PERSONNEL AS NECESSARY.**

**FOR A MEDICAL EMERGENCY: IDENTIFY ON SCENE INCIDENT COMMANDER BY NAME AND POSITION AND ANNOUNCE TO INITIATE RESPONSE FROM IMT COMMUNICATIONS/DISPATCH.**

**Use the following items to communicate situation to communications/dispatch.**

**1. CONTACT COMMUNICATIONS / DISPATCH (Verify correct frequency prior to starting report)**

Ex: "Communications, Div. Alpha. Stand-by for Emergency Traffic."

**2. INCIDENT STATUS: Provide incident summary (including number of patients) and command structure.**

Ex: "Communications, I have a Red priority patient, unconscious, struck by a falling tree. Requesting air ambulance to Forest Road 1 at (Lat./Long.) This will be the Trout Meadow Medical, IC is TFLD Jones. EMT Smith is providing medical care."

Severity of Emergency / Transport Priority	<input type="checkbox"/> <b>RED / PRIORITY 1 Life or limb threatening injury or illness. Evacuation need is IMMEDIATE</b> Ex: Unconscious, difficulty breathing; bleeding severely, 2 <sup>o</sup> - 3 <sup>o</sup> burns more than 4 palm sizes, heat stroke, disoriented.	
	<input type="checkbox"/> <b>YELLOW / PRIORITY 2 Serious injury or illness. Evacuation may be DELAYED if necessary.</b> Ex: Significant trauma, unable to walk, 2 <sup>o</sup> - 3 <sup>o</sup> burns not more than 1-3 palm sizes.	
	<input type="checkbox"/> <b>GREEN / PRIORITY 3 Minor injury or illness. Non-Emergency transport</b> Ex: Sprains, strains, minor heat-related illness.	
Nature of Injury or Illness & Mechanism of Injury		Brief Summary of Injury or Illness (Ex: Unconscious, Struck by Falling Tree)
Transport Request		Air Ambulance / Short Haul/Hoist Ground Ambulance / Other
Patient Location		Descriptive Location & Lat. / Long. (WGS84)
Incident Name		Geographic Name + "Medical" (Ex: Trout Meadow Medical)
On-Scene Incident Commander		Name of on-scene IC of Incident within an Incident (Ex: TFLD Jones)
Patient Care		Name of Care Provider (Ex: EMT Smith)

**3. INITIAL PATIENT ASSESSMENT: Complete this section for each patient as applicable (start with the most severe patient)**

Patient Assessment: See IRPG page 106

Treatment:

**4. TRANSPORT PLAN:**

Evacuation Location (if different): (Descriptive Location (drop point, intersection, etc.) or Lat. / Long.) Patient's ETA to Evacuation Location:

Helispot / Extraction Site Size and Hazards:

**5. ADDITIONAL RESOURCES / EQUIPMENT NEEDS:**

Example: Paramedic/EMT, Crews, Immobilization Devices, AED, Oxygen, Trauma Bag, IV/Fluid(s), Splints, Rope rescue, Wheeled litter, HAZMAT, Extrication

**6. COMMUNICATIONS: Identify State Air/Ground EMS Frequencies and Hospital Contacts as applicable**

Function	Channel Name/Number	Receive (RX)	Tone/NAC *	Transmit (TX)	Tone/NAC *
COMMAND					
AIR-TO-GRND					
TACTICAL					

**7. CONTINGENCY: Considerations: If primary options fail, what actions can be implemented in conjunction with primary evacuation method? Be thinking ahead.**

**8. ADDITIONAL INFORMATION: Updates/Changes, etc.**

**REMEMBER: Confirm ETA's of resources ordered. Act according to your level of training. Be Alert. Keep Calm. Think Clearly. Act Decisively.**



