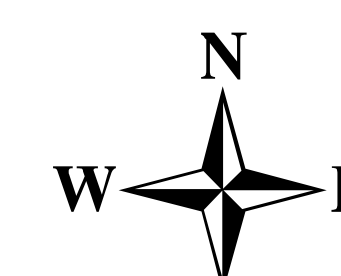


Briefing Map

Cove Creek UT-FIF 180381

07/25/2018

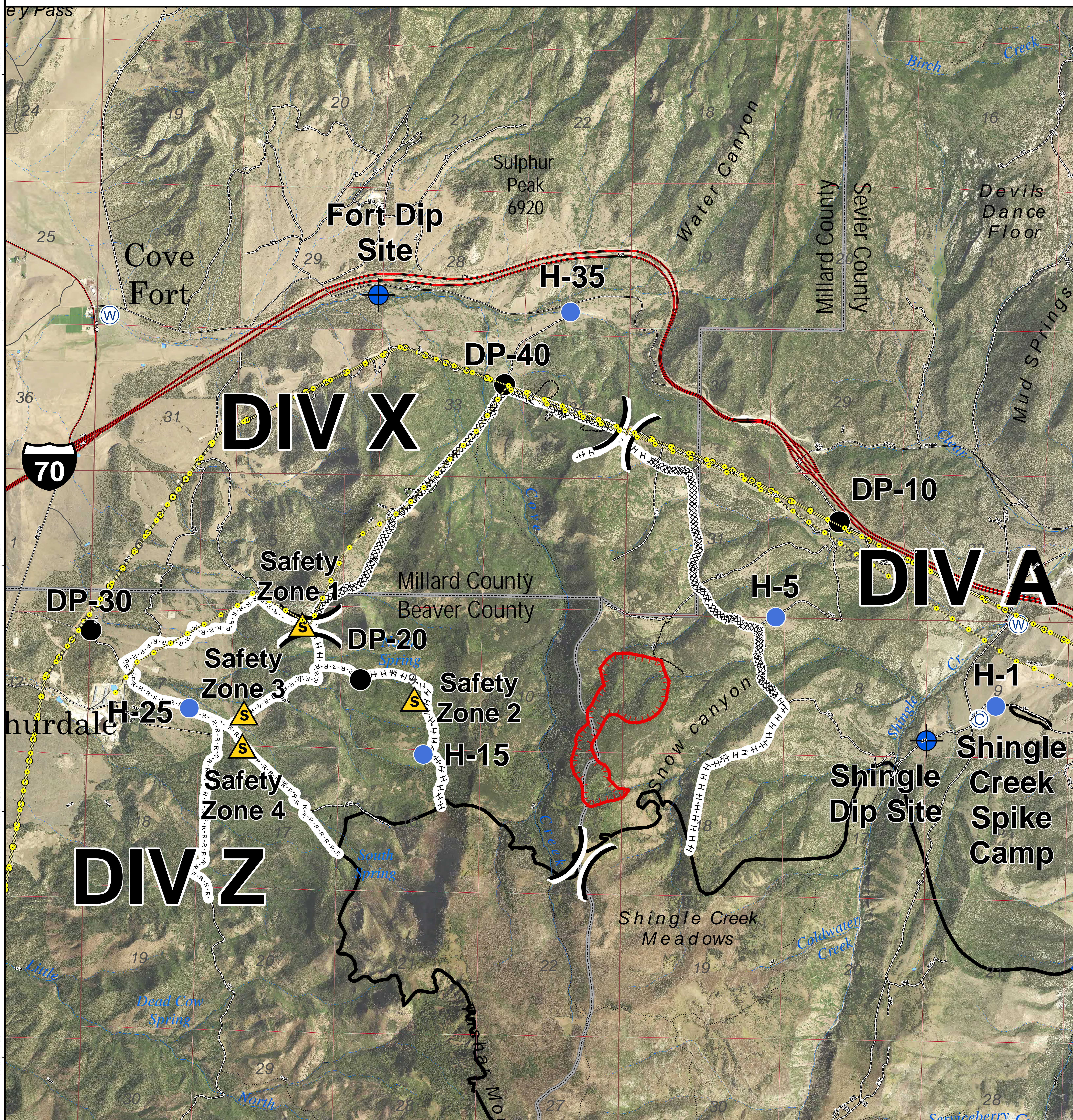
Approx 195.0 Acres
as of 07/24/2018 1800 hrs



CENTRAL UTAH
FIRE
INTERAGENCY

0 0.25 0.5 1
Miles

Map Produced By:
rreading
7/24/2018 21:16 hrs



- Camp
- Dip Site
- Drop Point
- Helispot
- Water Source
- Division Break
- Safety Zone
- Uncontrolled Fire Edge
- Completed Dozer Line
- Completed Hand Line
- Road as Completed Line
- Power Transmission Lines
- Interstate
- Highway
- Paved Road
- Gravel Road
- Dirt Roads
- 50 inch or less Trails
- 60 inch or less Trails
- Trails Open to All Vehicles
- Non-Motorized Trails
- Surface Type Unknown

Feature	Name	Latitude	Longitude
Spike Camp	Spike Camp	38° 33.663'	-112° 27.965'
Dip Site	Fort Dip Site	38° 36.193'	-112° 32.692'
Dip Site	Shingle Dip Site	38° 33.526'	-112° 28.375'
Safety Zone	Safety Zone 1	38° 34.169'	-112° 33.240'
Safety Zone	Safety Zone 2	38° 33.725'	-112° 32.360'
Safety Zone	Safety Zone 3	38° 33.625'	-112° 33.682'
Safety Zone	Safety Zone 4	38° 33.423'	-112° 33.691'
Drop Point	DP-10	38° 34.853'	-112° 29.079'
Drop Point	DP-20	38° 33.841'	-112° 32.782'
Drop Point	DP-30	38° 34.117'	-112° 34.884'
Drop Point	DP-40	38° 35.658'	-112° 31.699'
Helispot	H-1	38° 33.742'	-112° 27.840'
Helispot	H-5	38° 34.265'	-112° 29.561'
Helispot	H-15	38° 33.392'	-112° 32.283'
Helispot	H-25	38° 33.365'	-112° 34.108'
Helispot	H-35	38° 36.108'	-112° 31.196'

- County Lines
- Twitchell Canyon Fire, 2010



38°37'30"N
38°36'0"N
38°34'30"N
38°33'0"N
38°31'30"N
38°30'0"N

38°37'30"N
38°36'0"N
38°34'30"N
38°33'0"N
38°31'30"N
38°30'0"N