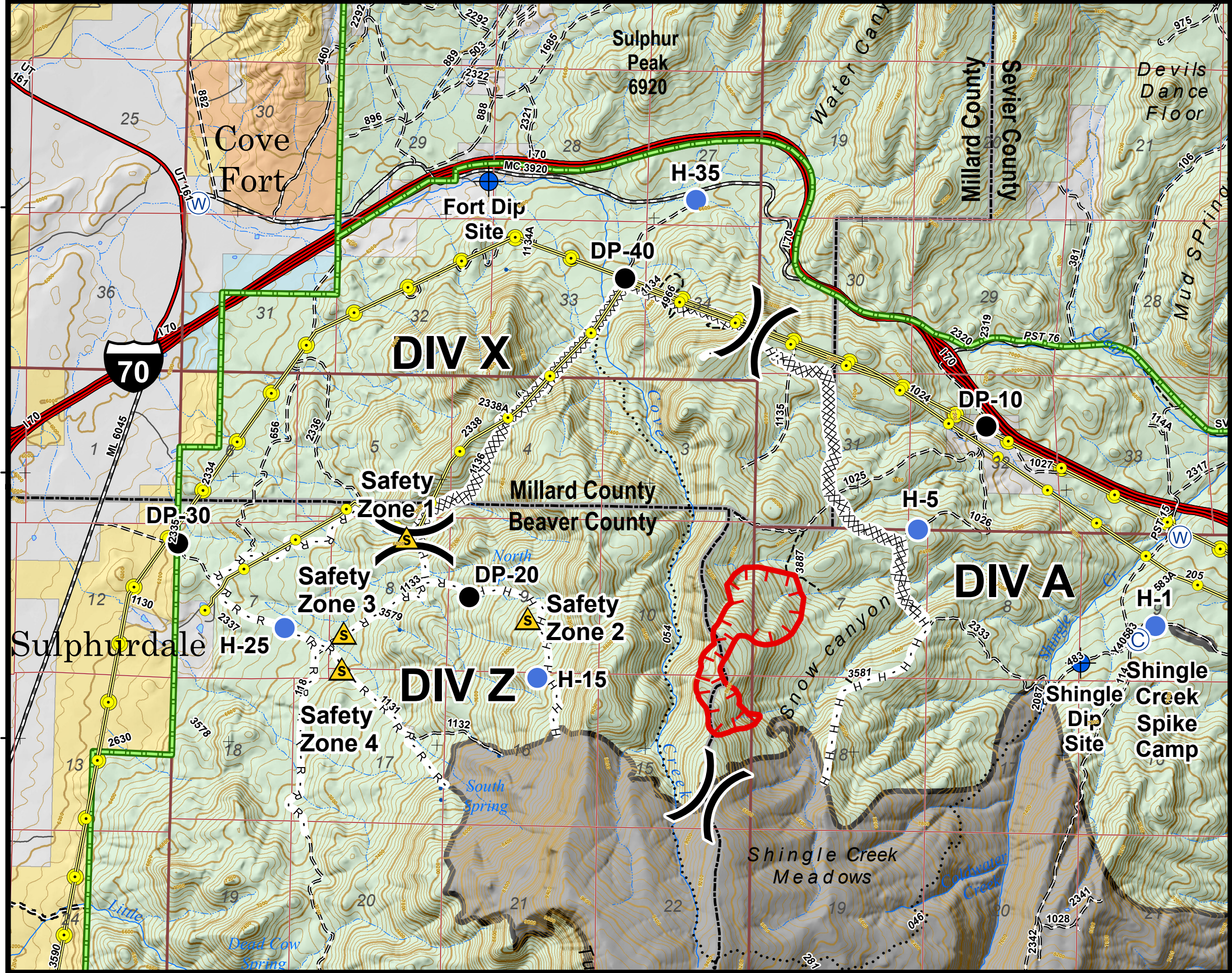


112°36'0"W 112°34'30"W 112°33'0"W 112°31'30"W 112°30'0"W 112°28'30"W 112°27'0"W 112°25'30"W



Operations Map

Cove Creek

UT-FIF-180381

07/25/2018

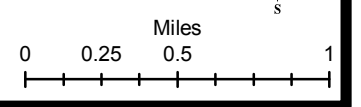


Approx 195.0 Acres
as of 07/24/2018 1800 hrs

Map Produced By:
reading
7/24/2018 20:01 hrs

Feature	Name	Latitude	Longitude
Spike Camp	Spike Camp	38° 33.663'	-112° 27.965'
Dip Site	Fort Dip Site	38° 36.193'	-112° 32.692'
Dip Site	Shingle Dip Site	38° 33.526'	-112° 28.375'
Safety Zone	Safety Zone 1	38° 34.169'	-112° 33.240'
Safety Zone	Safety Zone 2	38° 33.725'	-112° 32.360'
Safety Zone	Safety Zone 3	38° 33.625'	-112° 33.682'
Safety Zone	Safety Zone 4	38° 33.423'	-112° 33.691'
Drop Point	DP-10	38° 34.853'	-112° 29.079'
Drop Point	DP-20	38° 33.841'	-112° 32.782'
Drop Point	DP-30	38° 34.117'	-112° 34.884'
Drop Point	DP-40	38° 35.658'	-112° 31.699'
Helispot	H-1	38° 33.742'	-112° 27.840'
Helispot	H-5	38° 34.265'	-112° 29.561'
Helispot	H-15	38° 33.392'	-112° 32.283'
Helispot	H-25	38° 33.365'	-112° 34.108'
Helispot	H-35	38° 36.108'	-112° 31.196'

	Camp		Uncontrolled Fire Edge
	Dip Site		Completed Dozer Line
	Drop Point		Completed Hand Line
	Helispot		R - Road as Completed Line
	Water Source		Safety Zone
	Division Break		
	Interstate		Power Transmission Line
	Highway		Forest Boundary
	Paved Road		County Lines
	Gravel Road		Twitchell Canyon Fire
	Dirt Road		US Forest Service (USFS)
	Roads, Not Maintained		Bureau of Land Management (BLM)
	Surface Type Unknown		Indian Reservation (IR)
	50" Trails		State
	60" Trails		Private
	Trails Open to All		
	Non-Motorized Trails		



112°36'0"W 112°34'30"W 112°33'0"W 112°31'30"W 112°30'0"W 112°28'30"W 112°27'0"W 112°25'30"W