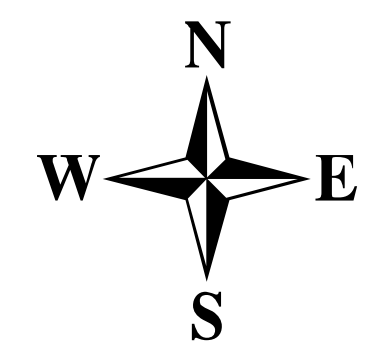


Progression Map

Cove Creek UT-FIF 180381

07/25/2018

Approx 195.0 Acres
as of 07/24/2018 1200 hrs



CENTRAL UTAH
FIRE
INTERAGENCY

Map Produced By:
rreading
7/25/2018 13:41 hrs

38°36'0"N

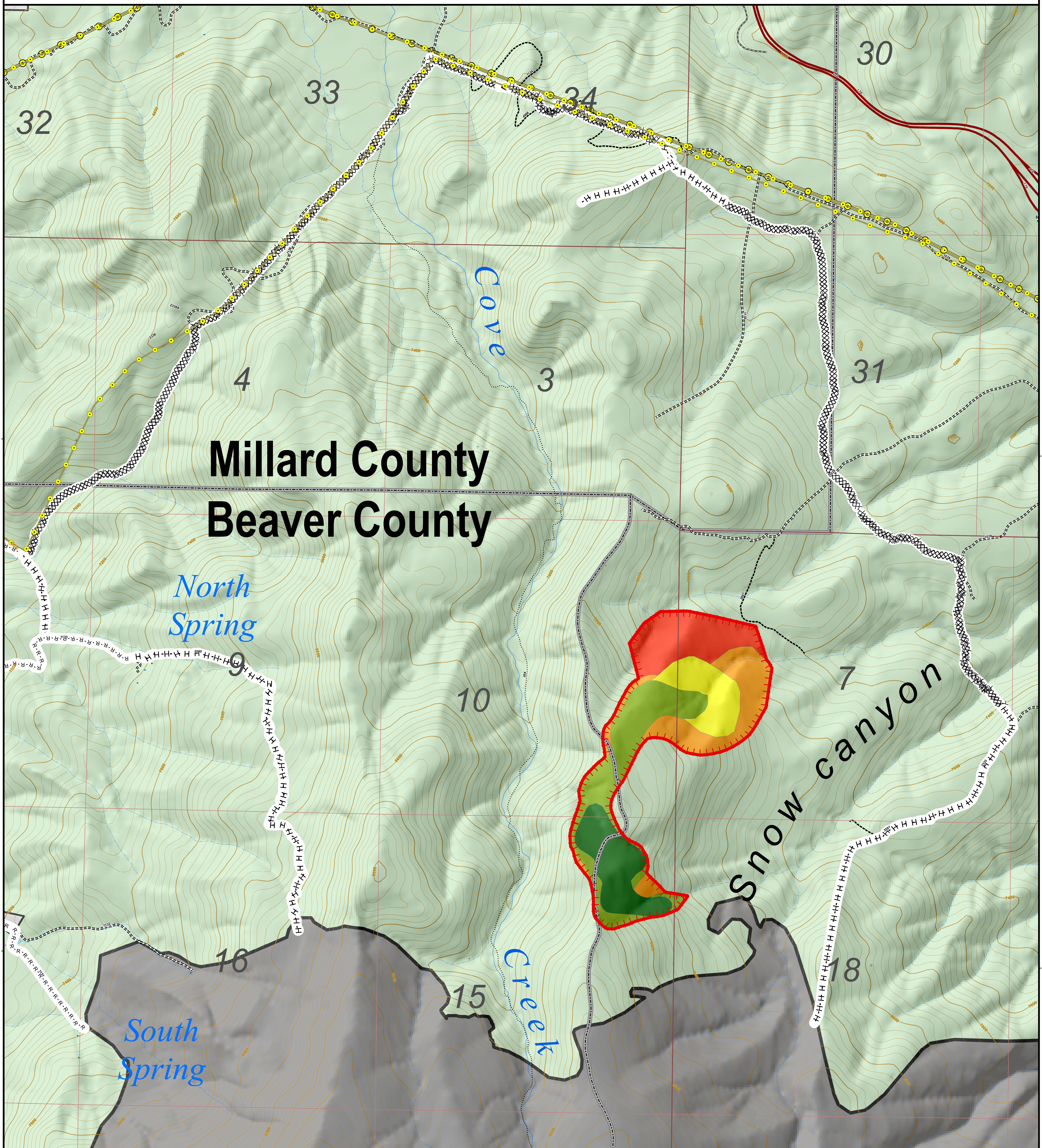
38°34'30"N

38°33'0"N

38°36'0"N

38°34'30"N

38°33'0"N



Millard County Beaver County

North
Spring

South
Spring

Cove
Creek

Snow
canyon

Creek

Progression Day

- Fire Perimeter 07/19/2018
- Fire Perimeter 07/20/2018
- Fire Perimeter 07/21/2018
- Fire Perimeter 07/22/2018
- Fire Perimeter 07/24/2018

- Uncontrolled Fire Edge
- Completed Dozer Line
- Completed Hand Line
- Road as Completed Line

- County Lines
- Twitchell Canyon Fire, 2010
- US Forest Service (USFS)
- Private
- Power Transmission Lines

- Interstate
- Highway
- Paved Road
- Gravel Road
- Dirt Roads
- 50 inch or less Trails
- 60 inch or less Trails
- Trails Open to All Vehicles
- Non-Motorized Trails
- Surface Type Unknown

