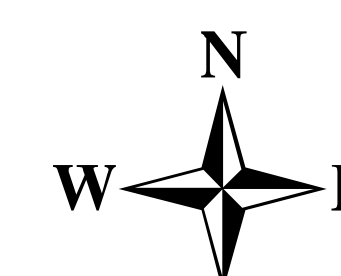


Briefing Map

Cove Creek UT-FIF 180381

07/26/2018

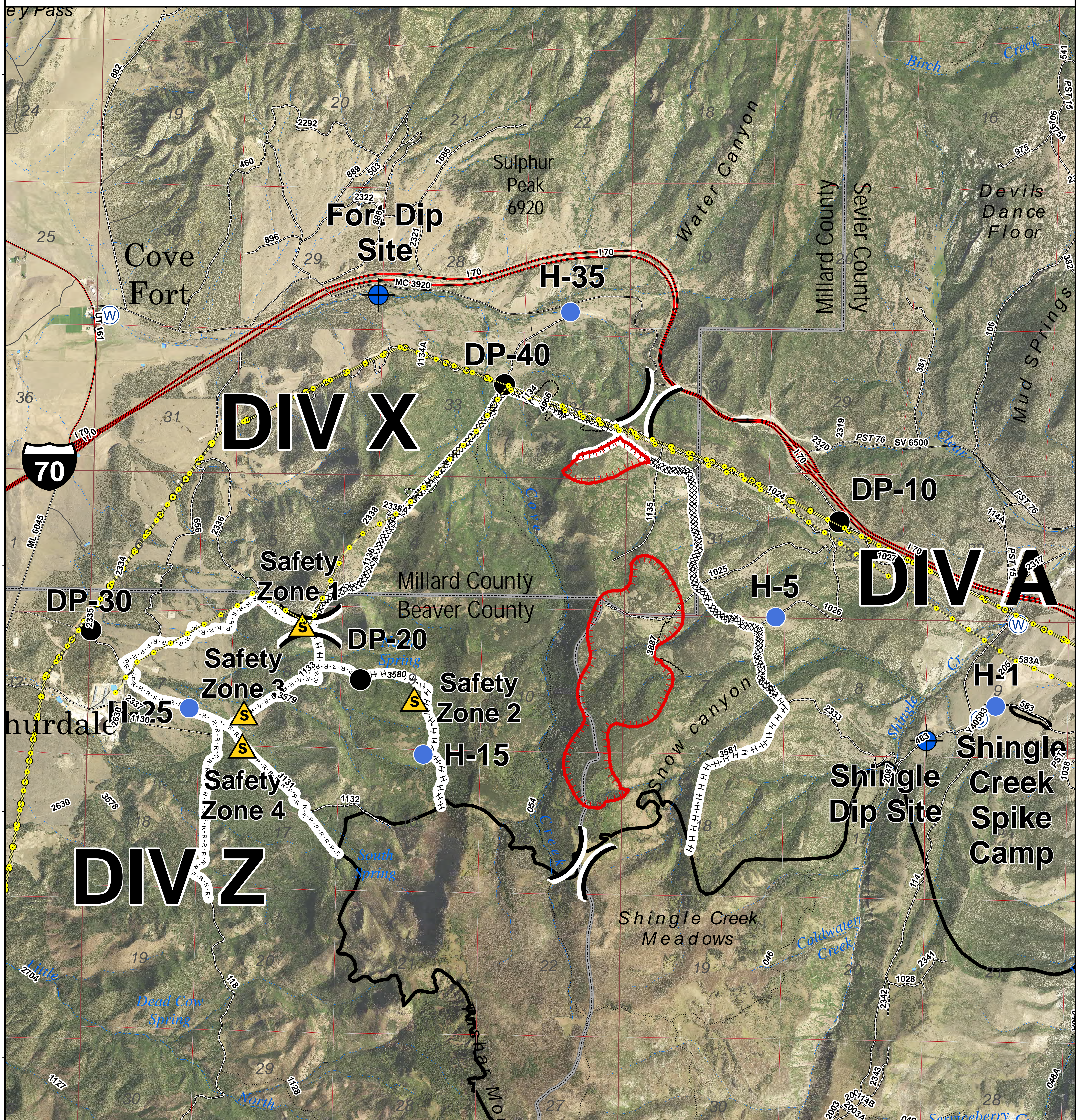
Approx 545 acres
as of 07/25/2018 1900 hrs



CENTRAL UTAH
FIRE
INTERAGENCY

0 0.25 0.5 1
Miles

Map Produced By:
reading
7/25/2018 21:50 hrs



- Camp
- Dip Site
- Drop Point
- Helispot
- Water Source
- Division Break
- Safety Zone
- Uncontrolled Fire Edge
- Completed Dozer Line
- Completed Hand Line
- Road as Completed Line
- Power Transmission Lines
- Interstate
- Highway
- Paved Road
- Gravel Road
- Dirt Roads
- 50 inch or less Trails
- 60 inch or less Trails
- Trails Open to All Vehicles
- Non-Motorized Trails
- Surface Type Unknown

| Feature | Name | Latitude | Longitude |
|-------------|------------------|-------------|---------------|
| Spike Camp | Spike Camp | 38° 33.663' | -112° 27.965' |
| Dip Site | Fort Dip Site | 38° 36.193' | -112° 32.692' |
| Dip Site | Shingle Dip Site | 38° 33.526' | -112° 28.375' |
| Safety Zone | Safety Zone 1 | 38° 34.169' | -112° 33.240' |
| Safety Zone | Safety Zone 2 | 38° 33.725' | -112° 32.360' |
| Safety Zone | Safety Zone 3 | 38° 33.625' | -112° 33.682' |
| Safety Zone | Safety Zone 4 | 38° 33.423' | -112° 33.691' |
| Drop Point | DP-10 | 38° 34.853' | -112° 29.079' |
| Drop Point | DP-20 | 38° 33.841' | -112° 32.782' |
| Drop Point | DP-30 | 38° 34.117' | -112° 34.884' |
| Drop Point | DP-40 | 38° 35.658' | -112° 31.699' |
| Helispot | H-1 | 38° 33.742' | -112° 27.840' |
| Helispot | H-5 | 38° 34.265' | -112° 29.561' |
| Helispot | H-15 | 38° 33.392' | -112° 32.283' |
| Helispot | H-25 | 38° 33.365' | -112° 34.108' |
| Helispot | H-35 | 38° 36.108' | -112° 31.196' |

- County Lines
- Twitchell Canyon Fire, 2010



38°37'30"N
38°36'0"N
38°34'30"N
38°33'0"N
38°31'30"N
38°30'0"N

38°37'30"N
38°36'0"N
38°34'30"N
38°33'0"N
38°31'30"N
38°30'0"N