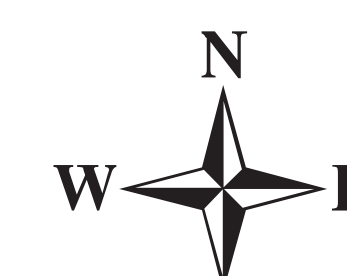


Briefing Map Cove Creek UT-FIF 180318 07/27/2018

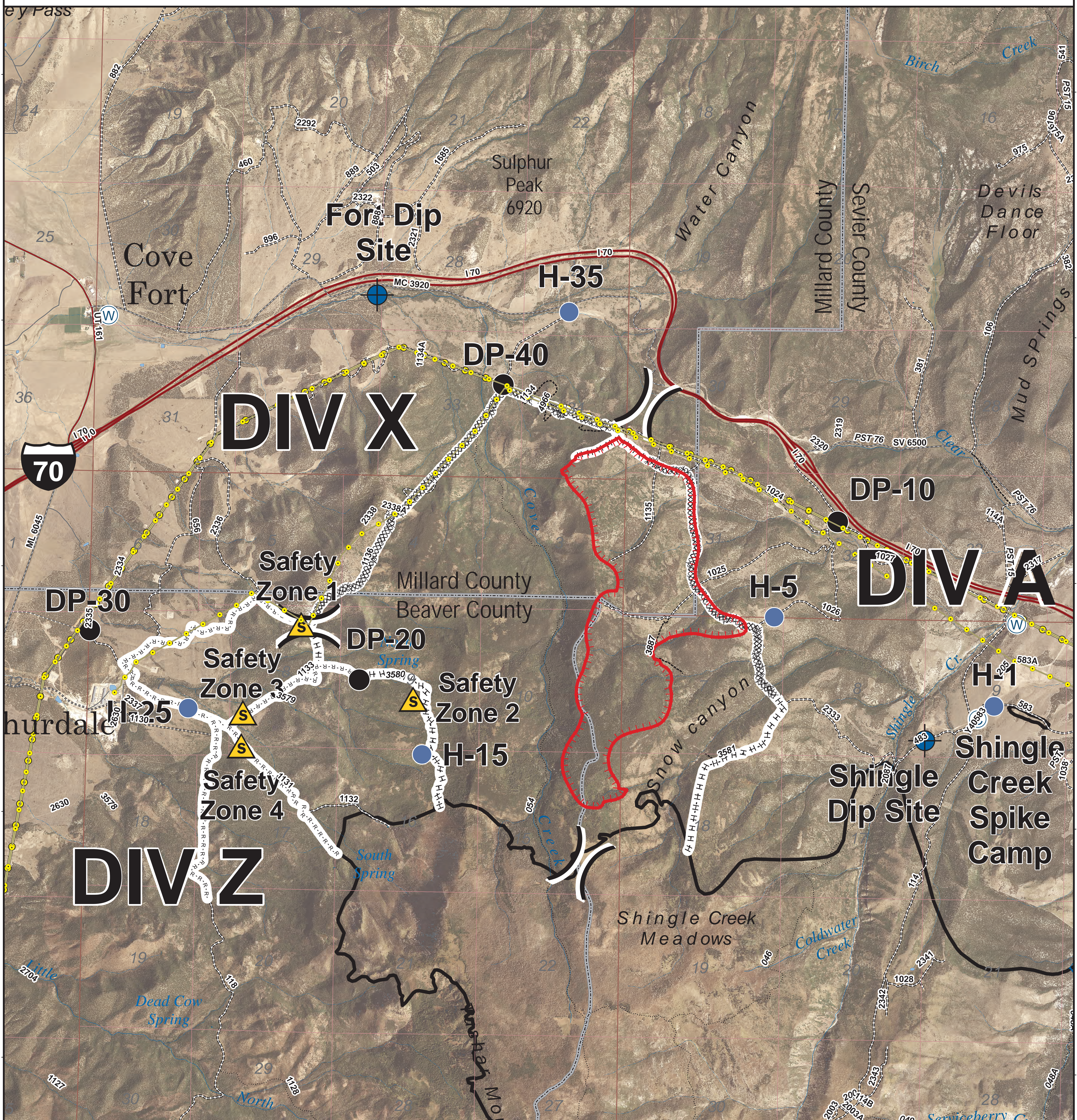
Approx 975.2 acres
as of 07/26/2018 2000 hrs



CENTRAL UTAH
FIRE
INTERAGENCY

0 0.25 0.5 1
Miles

Map Produced By:
mtoone
7/26/2018 21:25 hrs



	Camp		Uncontrolled Fire Edge		Interstate
	Dip Site		Completed Dozer Line		Highway
	Drop Point		Completed Hand Line		Paved Road
	Helispot		Road as Completed Line		Gravel Road
	Water Source		Power Transmission Lines		Dirt Roads
	Division Break				50 inch or less Trails
	Safety Zone				60 inch or less Trails
					Trails Open to All Vehicles
					Non-Motorized Trails
					Surface Type Unknown

	County Lines
	Twitchell Canyon Fire, 2010

Feature	Name	Latitude	Longitude
Spike Camp	Spike Camp	38° 33.663'	-112° 27.965'
Dip Site	Fort Dip Site	38° 36.193'	-112° 32.692'
Dip Site	Shingle Dip Site	38° 33.526'	-112° 28.375'
Safety Zone	Safety Zone 1	38° 34.169'	-112° 33.240'
Safety Zone	Safety Zone 2	38° 33.725'	-112° 32.360'
Safety Zone	Safety Zone 3	38° 33.625'	-112° 33.682'
Safety Zone	Safety Zone 4	38° 33.423'	-112° 33.691'
Drop Point	DP-10	38° 34.853'	-112° 29.079'
Drop Point	DP-20	38° 33.841'	-112° 32.782'
Drop Point	DP-30	38° 34.117'	-112° 34.884'
Drop Point	DP-40	38° 35.658'	-112° 31.699'
Helispot	H-1	38° 33.742'	-112° 27.840'
Helispot	H-5	38° 34.265'	-112° 29.561'
Helispot	H-15	38° 33.392'	-112° 32.283'
Helispot	H-25	38° 33.365'	-112° 34.108'
Helispot	H-35	38° 36.108'	-112° 31.196'

