

112°36'0"W 112°34'30"W 112°33'0"W 112°31'30"W 112°30'0"W 112°28'30"W 112°27'0"W 112°25'30"W

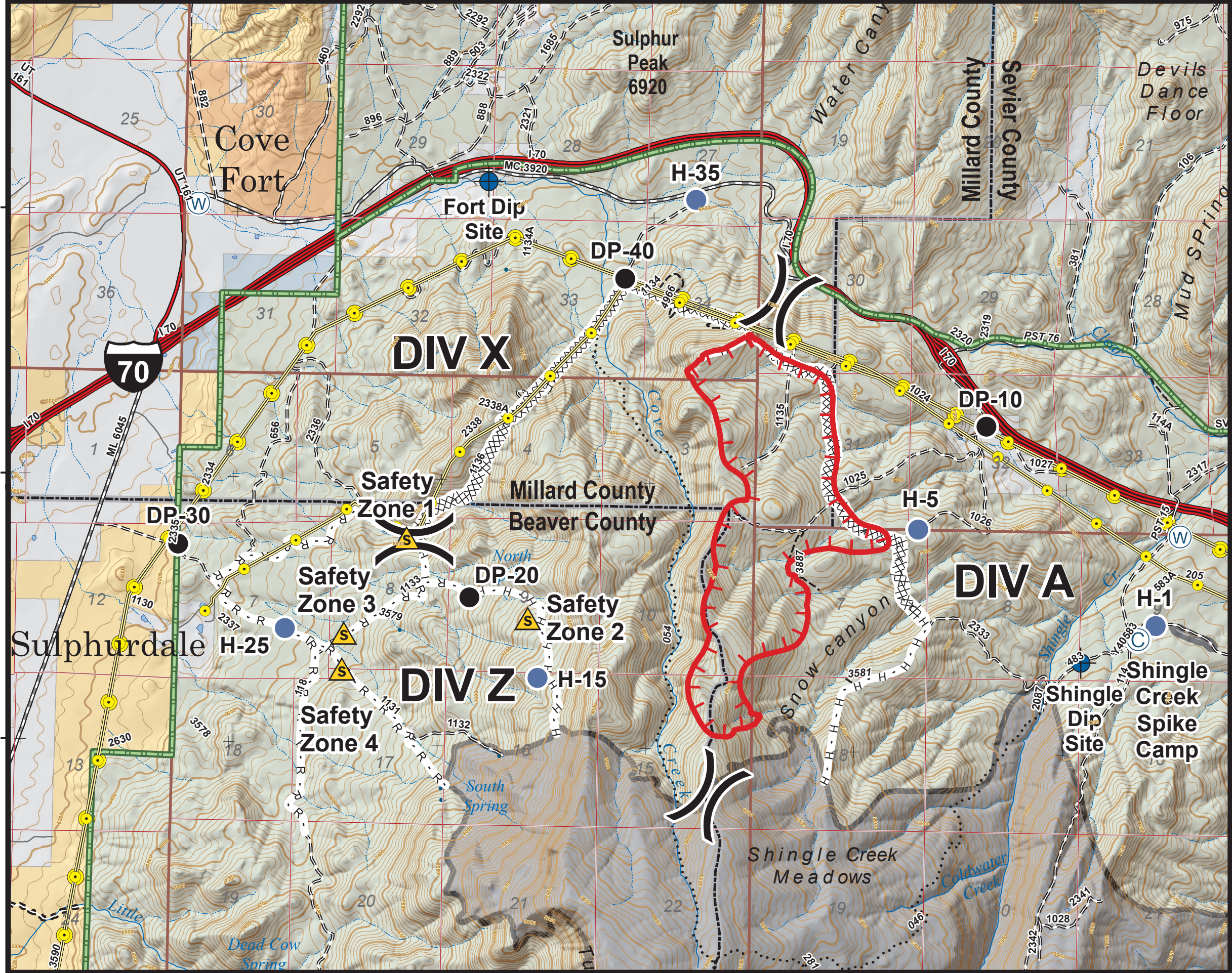
Operations Map Cove Creek UT-FIF-180318 07/27/2018



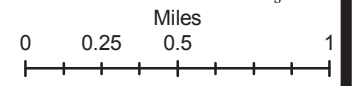
Approx 975.2 acres
as of 07/26/2018 2000 hrs

Map Produced By:
mtoone
7/26/2018 20:22 hrs

Feature	Name	Latitude	Longitude
Spike Camp	Spike Camp	38° 33.663'	-112° 27.965'
Dip Site	Fort Dip Site	38° 36.193'	-112° 32.692'
Dip Site	Shingle Dip Site	38° 33.526'	-112° 28.375'
Safety Zone	Safety Zone 1	38° 34.169'	-112° 33.240'
Safety Zone	Safety Zone 2	38° 33.725'	-112° 32.360'
Safety Zone	Safety Zone 3	38° 33.625'	-112° 33.682'
Safety Zone	Safety Zone 4	38° 33.423'	-112° 33.691'
Drop Point	DP-10	38° 34.853'	-112° 29.079'
Drop Point	DP-20	38° 33.841'	-112° 32.782'
Drop Point	DP-30	38° 34.117'	-112° 34.884'
Drop Point	DP-40	38° 35.658'	-112° 31.699'
Helispot	H-1	38° 33.742'	-112° 27.840'
Helispot	H-5	38° 34.265'	-112° 29.561'
Helispot	H-15	38° 33.392'	-112° 32.283'
Helispot	H-25	38° 33.365'	-112° 34.108'
Helispot	H-35	38° 36.108'	-112° 31.196'



- Camp
- Dip Site
- Drop Point
- Helispot
- Water Source
- Division Break
- Interstate
- Highway
- Paved Road
- Gravel Road
- Dirt Road
- Roads, Not Maintained
- Surface Type Unknown
- 50" Trails
- 60" Trails
- Trails Open to All
- Non-Motorized Trails
- Uncontrolled Fire Edge
- Completed Dozer Line
- H - Completed Hand Line
- R - Road as Completed Line
- Safety Zone
- Power Transmission Line
- Forest Boundary
- County Lines
- Twitchell Canyon Fire
- US Forest Service (USFS)
- Bureau of Land Management (BLM)
- Indian Reservation (IR)
- State
- Private



112°36'0"W 112°34'30"W 112°33'0"W 112°31'30"W 112°30'0"W 112°28'30"W 112°27'0"W 112°25'30"W

38°36'0"N
38°34'30"N
38°33'0"N

38°36'0"N
38°34'30"N
38°33'0"N

