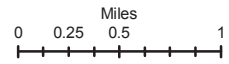


112°35'0"W 112°34'0"W 112°33'0"W 112°32'0"W 112°31'0"W 112°30'0"W 112°29'0"W 112°28'0"W

IAP Map Cove Creek UT-FIF-180318 07/29/2018

Approx. 1255 acres
as of 07/28/2018 1830 hrs



- Uncontrolled Fire Edge
- Completed Line
- Completed Dozer Line
- Completed Hand Line
- Road as Completed Line
- Power Transmission Line
- Division Break
- Forest Boundary
- Camp
- Dip Site
- Drop Point
- Helispot
- Water Source
- Safety Zone
- County Lines

- Interstates and Highways
- Paved Road
- Gravel Road
- Dirt Road
- Roads, Not Maintained
- Surface Type Unknown
- 50" Trails
- Trails Open to All
- Non-Motorized Trails
- Twitchell Canyon Fire 2010

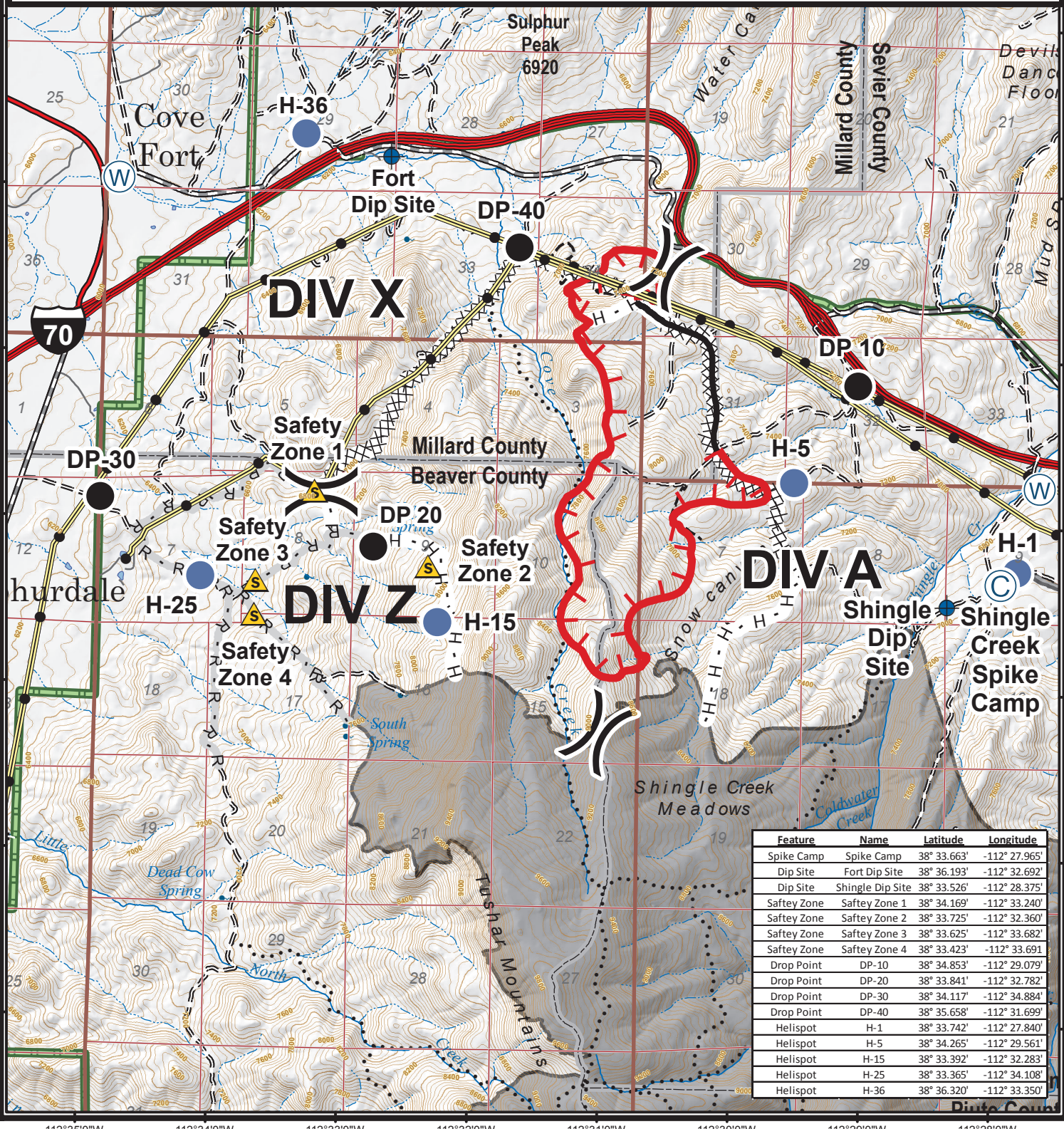
CENTRAL UTAH
FIRE
INTERAGENCY



Map Produced By:
mtoone
7/28/2018 19:00 hrs

38°38'0"N
38°37'0"N
38°36'0"N
38°35'0"N
38°34'0"N
38°33'0"N
38°32'0"N
38°31'0"N

38°37'0"N
38°36'0"N
38°35'0"N
38°34'0"N
38°33'0"N
38°32'0"N
38°31'0"N



Feature	Name	Latitude	Longitude
Spike Camp	Spike Camp	38° 33.663'	-112° 27.965'
Dip Site	Fort Dip Site	38° 36.193'	-112° 32.692'
Dip Site	Shingle Dip Site	38° 33.526'	-112° 28.375'
Safety Zone	Safety Zone 1	38° 34.169'	-112° 33.240'
Safety Zone	Safety Zone 2	38° 33.725'	-112° 32.360'
Safety Zone	Safety Zone 3	38° 33.625'	-112° 33.682'
Safety Zone	Safety Zone 4	38° 33.423'	-112° 33.691'
Drop Point	DP-10	38° 34.853'	-112° 29.079'
Drop Point	DP-20	38° 33.841'	-112° 32.782'
Drop Point	DP-30	38° 34.117'	-112° 34.884'
Drop Point	DP-40	38° 35.658'	-112° 31.699'
Helispot	H-1	38° 33.742'	-112° 27.840'
Helispot	H-5	38° 34.265'	-112° 29.561'
Helispot	H-15	38° 33.392'	-112° 32.283'
Helispot	H-25	38° 33.365'	-112° 34.108'
Helispot	H-36	38° 36.320'	-112° 33.350'

112°35'0"W 112°34'0"W 112°33'0"W 112°32'0"W 112°31'0"W 112°30'0"W 112°29'0"W 112°28'0"W