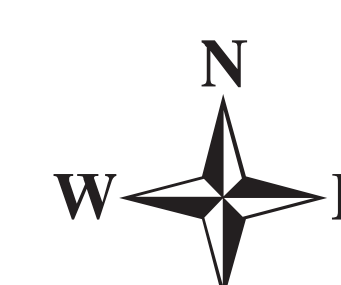


Briefing Map

Cove Creek UT-FIF 180318

07/30/2018

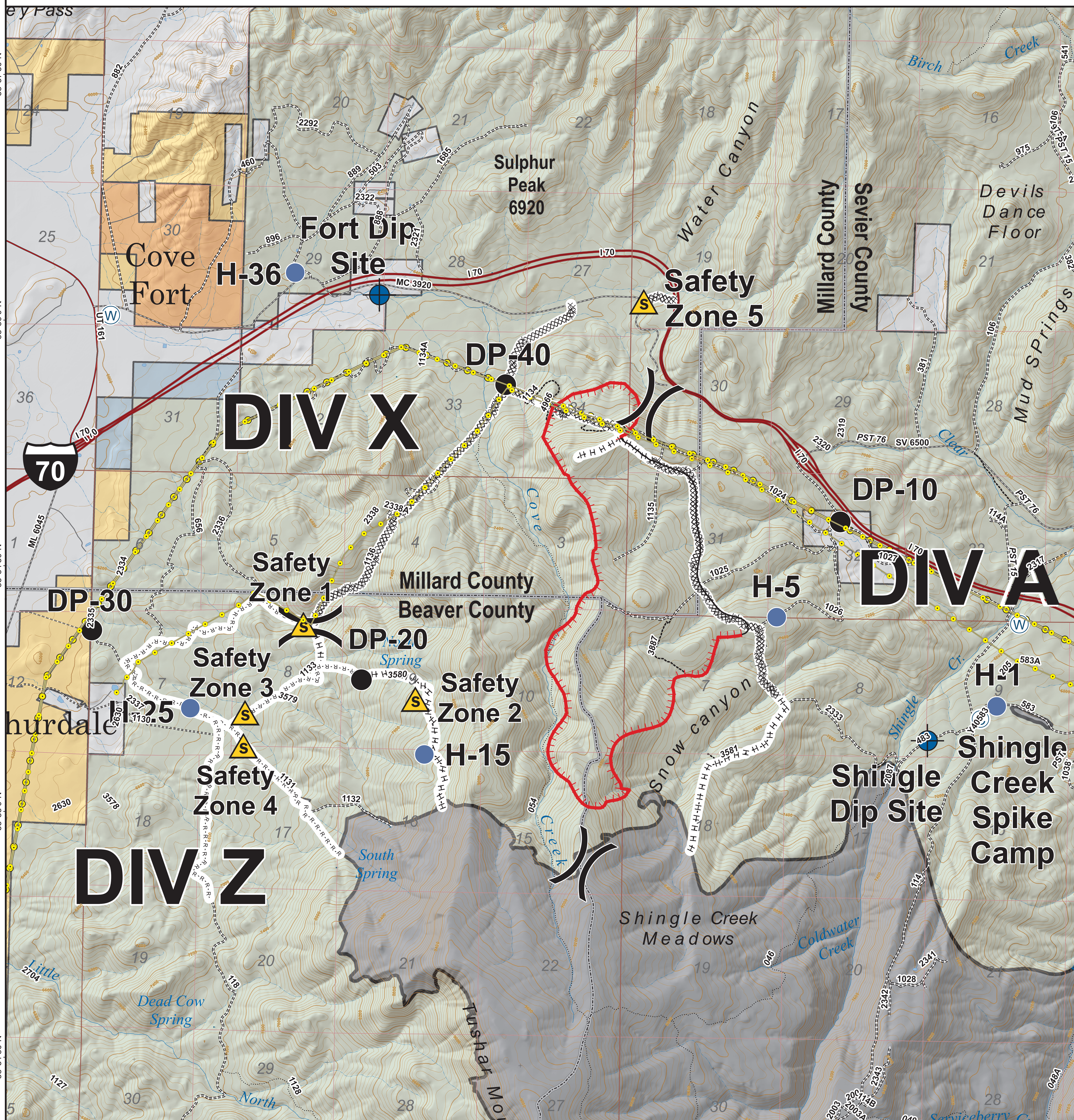
Approx 1363 acres
as of 07/29/2018 1800 hrs



CENTRAL UTAH
FIRE
INTERAGENCY

0 0.25 0.5 1
Miles

Map Produced By:
mtoone
7/29/2018 18:51 hrs



	Camp		Uncontrolled Fire Edge		Interstate
	Dip Site		Completed Line		Highway
	Drop Point		Completed Dozer Line		Paved Road
	Helispot		Completed Hand Line		Gravel Road
	Water Source		Road as Completed Line		Dirt Roads
	Division Break		Power Transmission Lines		50 inch or less Trails
	Safety Zone				60 inch or less Trails
					Trails Open to All Vehicles
					Non-Motorized Trails
					Surface Type Unknown

	County Lines
	Twitchell Canyon Fire, 2010
	US Forest Service (USFS)
	Bureau of Land Management (BLM)
	Indian Reservation (IR)
	State
	Private

Feature	Name	Latitude	Longitude
Spike Camp	Spike Camp	38° 33.663'	-112° 27.965'
Dip Site	Fort Dip Site	38° 36.193'	-112° 32.692'
Dip Site	Shingle Dip Site	38° 33.526'	-112° 28.375'
Safety Zone	Safety Zone 1	38° 34.169'	-112° 33.240'
Safety Zone	Safety Zone 2	38° 33.725'	-112° 32.360'
Safety Zone	Safety Zone 3	38° 33.625'	-112° 33.682'
Safety Zone	Safety Zone 4	38° 33.423'	-112° 33.691'
Safety Zone	Safety Zone 5	38° 36.175'	-112° 30.635'
Drop Point	DP-10	38° 34.853'	-112° 29.079'
Drop Point	DP-20	38° 33.841'	-112° 32.782'
Drop Point	DP-30	38° 34.117'	-112° 34.884'
Drop Point	DP-40	38° 35.658'	-112° 31.699'
Helispot	H-1	38° 33.742'	-112° 27.840'
Helispot	H-5	38° 34.265'	-112° 29.561'
Helispot	H-15	38° 33.392'	-112° 32.283'
Helispot	H-25	38° 33.365'	-112° 34.108'
Helispot	H-36	38° 36.320'	-112° 33.350'

