

Briefing Map

Cove Creek UT-FIF 180318

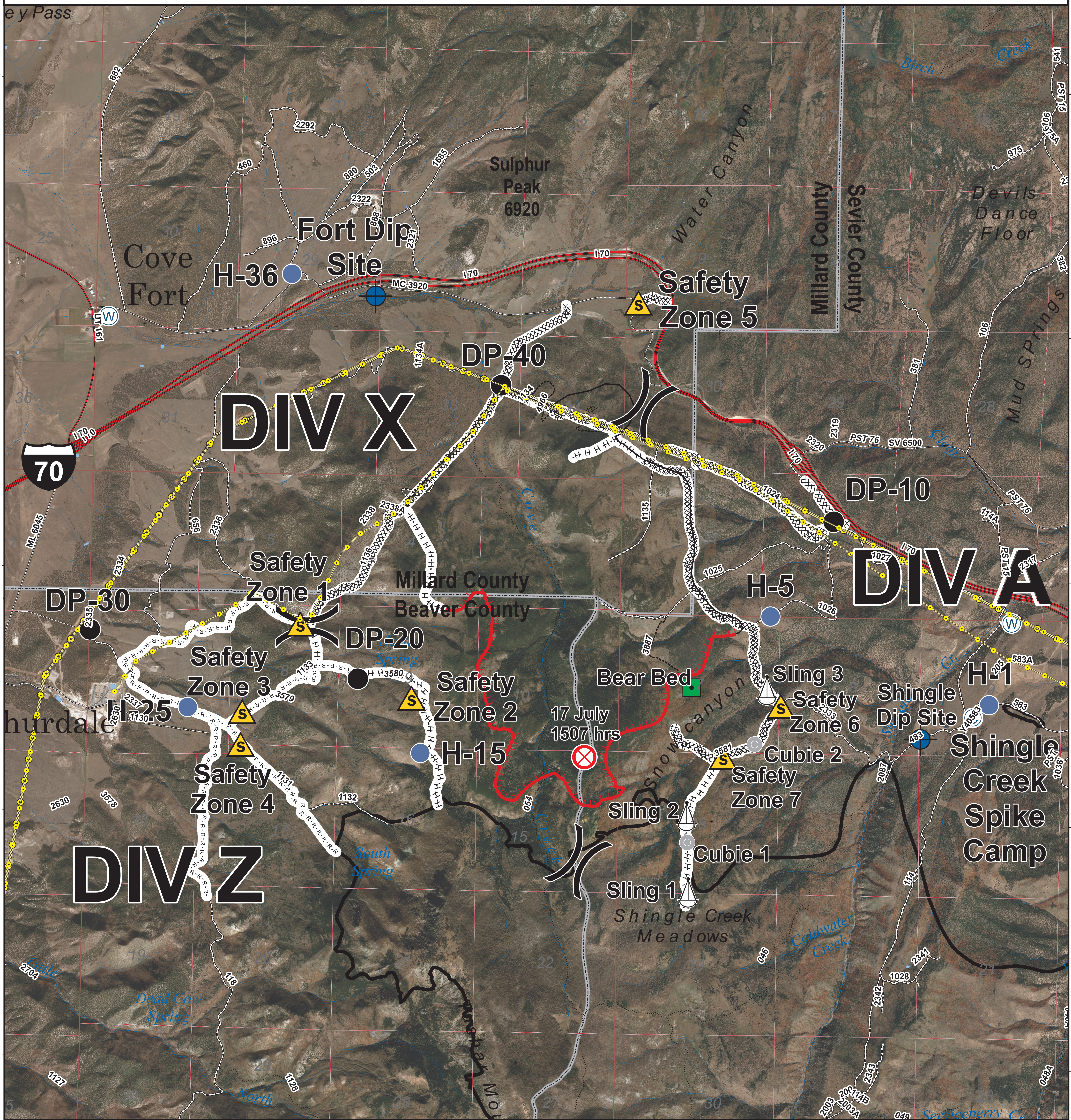
08/01/2018

Approx 2586 acres
as of 07/30/2018 2000 hrs

0 0.25 0.5 1
Miles

CENTRAL UTAH
FIRE
INTERAGENCY

Map Produced By:
mtoone
7/31/2018 22:21 hrs



<ul style="list-style-type: none"> Camp Dip Site Drop Point Helispot Water Source Division Break Safety Zone 	<ul style="list-style-type: none"> Uncontrolled Fire Edge Completed Line Completed Dozer Line Completed Hand Line Road as Completed Line Power Transmission Lines Fire Origin 	<ul style="list-style-type: none"> Interstate Highway Paved Road Gravel Road Dirt Roads 50 inch or less Trails 60 inch or less Trails Trails Open to All Vehicles Non-Motorized Trails Surface Type Unknown
--	---	---

<ul style="list-style-type: none"> County Lines Twitchell Canyon Fire, 2010 	<table border="1" style="width: 100%; border-collapse: collapse; font-size: 8px;"> <thead> <tr> <th>Feature</th> <th>Name</th> <th>Latitude</th> <th>Longitude</th> </tr> </thead> <tbody> <tr><td>Spike Camp</td><td>Spike Camp</td><td>38° 33.663'</td><td>-112° 27.965'</td></tr> <tr><td>Dip Site</td><td>Fort Dip Site</td><td>38° 36.193'</td><td>-112° 32.692'</td></tr> <tr><td>Dip Site</td><td>Shingle Dip Site</td><td>38° 33.526'</td><td>-112° 28.375'</td></tr> <tr><td>Drop Point</td><td>DP-10</td><td>38° 34.853'</td><td>-112° 29.079'</td></tr> <tr><td>Drop Point</td><td>DP-30</td><td>38° 34.117'</td><td>-112° 34.884'</td></tr> <tr><td>Drop Point</td><td>DP-40</td><td>38° 35.658'</td><td>-112° 31.699'</td></tr> <tr><td>Helispot</td><td>H-1</td><td>38° 33.742'</td><td>-112° 27.840'</td></tr> <tr><td>Helispot</td><td>H-5</td><td>38° 34.265'</td><td>-112° 29.561'</td></tr> <tr><td>Helispot</td><td>H-15</td><td>38° 33.392'</td><td>-112° 32.283'</td></tr> <tr><td>Helispot</td><td>H-25</td><td>38° 33.365'</td><td>-112° 34.108'</td></tr> <tr><td>Helispot</td><td>H-36</td><td>38° 36.320'</td><td>-112° 33.350'</td></tr> <tr><td>Landmark</td><td>Bear Bed</td><td>38° 33.821'</td><td>-112° 30.170'</td></tr> <tr><td>Cubie</td><td>Cubie 1</td><td>38° 33.478'</td><td>-112° 29.670'</td></tr> <tr><td>Safety Zone</td><td>Safety Zone 7</td><td>38° 33.393'</td><td>-112° 32.915'</td></tr> <tr><td>Safety Zone</td><td>Safety Zone 1</td><td>38° 34.169'</td><td>-112° 33.240'</td></tr> <tr><td>Safety Zone</td><td>Safety Zone 2</td><td>38° 33.725'</td><td>-112° 32.360'</td></tr> <tr><td>Safety Zone</td><td>Safety Zone 3</td><td>38° 33.625'</td><td>-112° 33.682'</td></tr> <tr><td>Safety Zone</td><td>Safety Zone 4</td><td>38° 33.423'</td><td>-112° 33.691'</td></tr> <tr><td>Safety Zone</td><td>Safety Zone 5</td><td>38° 36.175'</td><td>-112° 30.635'</td></tr> <tr><td>Safety Zone</td><td>Safety Zone 6</td><td>38° 33.712'</td><td>-112° 29.471'</td></tr> <tr><td>Sling Site</td><td>Sling 1</td><td>38° 33.033'</td><td>-112° 30.194'</td></tr> <tr><td>Sling Site</td><td>Sling 2</td><td>38° 32.564'</td><td>-112° 30.173'</td></tr> <tr><td>Sling Site</td><td>Sling 3</td><td>38° 33.814'</td><td>-112° 29.582'</td></tr> <tr><td>Water Source</td><td>DIV A Water Source</td><td>38° 34.247'</td><td>-112° 27.674'</td></tr> <tr><td>Water Source</td><td>Cove Fort Water Source</td><td>38° 36.042'</td><td>-112° 34.779'</td></tr> </tbody> </table>	Feature	Name	Latitude	Longitude	Spike Camp	Spike Camp	38° 33.663'	-112° 27.965'	Dip Site	Fort Dip Site	38° 36.193'	-112° 32.692'	Dip Site	Shingle Dip Site	38° 33.526'	-112° 28.375'	Drop Point	DP-10	38° 34.853'	-112° 29.079'	Drop Point	DP-30	38° 34.117'	-112° 34.884'	Drop Point	DP-40	38° 35.658'	-112° 31.699'	Helispot	H-1	38° 33.742'	-112° 27.840'	Helispot	H-5	38° 34.265'	-112° 29.561'	Helispot	H-15	38° 33.392'	-112° 32.283'	Helispot	H-25	38° 33.365'	-112° 34.108'	Helispot	H-36	38° 36.320'	-112° 33.350'	Landmark	Bear Bed	38° 33.821'	-112° 30.170'	Cubie	Cubie 1	38° 33.478'	-112° 29.670'	Safety Zone	Safety Zone 7	38° 33.393'	-112° 32.915'	Safety Zone	Safety Zone 1	38° 34.169'	-112° 33.240'	Safety Zone	Safety Zone 2	38° 33.725'	-112° 32.360'	Safety Zone	Safety Zone 3	38° 33.625'	-112° 33.682'	Safety Zone	Safety Zone 4	38° 33.423'	-112° 33.691'	Safety Zone	Safety Zone 5	38° 36.175'	-112° 30.635'	Safety Zone	Safety Zone 6	38° 33.712'	-112° 29.471'	Sling Site	Sling 1	38° 33.033'	-112° 30.194'	Sling Site	Sling 2	38° 32.564'	-112° 30.173'	Sling Site	Sling 3	38° 33.814'	-112° 29.582'	Water Source	DIV A Water Source	38° 34.247'	-112° 27.674'	Water Source	Cove Fort Water Source	38° 36.042'	-112° 34.779'
Feature	Name	Latitude	Longitude																																																																																																						
Spike Camp	Spike Camp	38° 33.663'	-112° 27.965'																																																																																																						
Dip Site	Fort Dip Site	38° 36.193'	-112° 32.692'																																																																																																						
Dip Site	Shingle Dip Site	38° 33.526'	-112° 28.375'																																																																																																						
Drop Point	DP-10	38° 34.853'	-112° 29.079'																																																																																																						
Drop Point	DP-30	38° 34.117'	-112° 34.884'																																																																																																						
Drop Point	DP-40	38° 35.658'	-112° 31.699'																																																																																																						
Helispot	H-1	38° 33.742'	-112° 27.840'																																																																																																						
Helispot	H-5	38° 34.265'	-112° 29.561'																																																																																																						
Helispot	H-15	38° 33.392'	-112° 32.283'																																																																																																						
Helispot	H-25	38° 33.365'	-112° 34.108'																																																																																																						
Helispot	H-36	38° 36.320'	-112° 33.350'																																																																																																						
Landmark	Bear Bed	38° 33.821'	-112° 30.170'																																																																																																						
Cubie	Cubie 1	38° 33.478'	-112° 29.670'																																																																																																						
Safety Zone	Safety Zone 7	38° 33.393'	-112° 32.915'																																																																																																						
Safety Zone	Safety Zone 1	38° 34.169'	-112° 33.240'																																																																																																						
Safety Zone	Safety Zone 2	38° 33.725'	-112° 32.360'																																																																																																						
Safety Zone	Safety Zone 3	38° 33.625'	-112° 33.682'																																																																																																						
Safety Zone	Safety Zone 4	38° 33.423'	-112° 33.691'																																																																																																						
Safety Zone	Safety Zone 5	38° 36.175'	-112° 30.635'																																																																																																						
Safety Zone	Safety Zone 6	38° 33.712'	-112° 29.471'																																																																																																						
Sling Site	Sling 1	38° 33.033'	-112° 30.194'																																																																																																						
Sling Site	Sling 2	38° 32.564'	-112° 30.173'																																																																																																						
Sling Site	Sling 3	38° 33.814'	-112° 29.582'																																																																																																						
Water Source	DIV A Water Source	38° 34.247'	-112° 27.674'																																																																																																						
Water Source	Cove Fort Water Source	38° 36.042'	-112° 34.779'																																																																																																						

