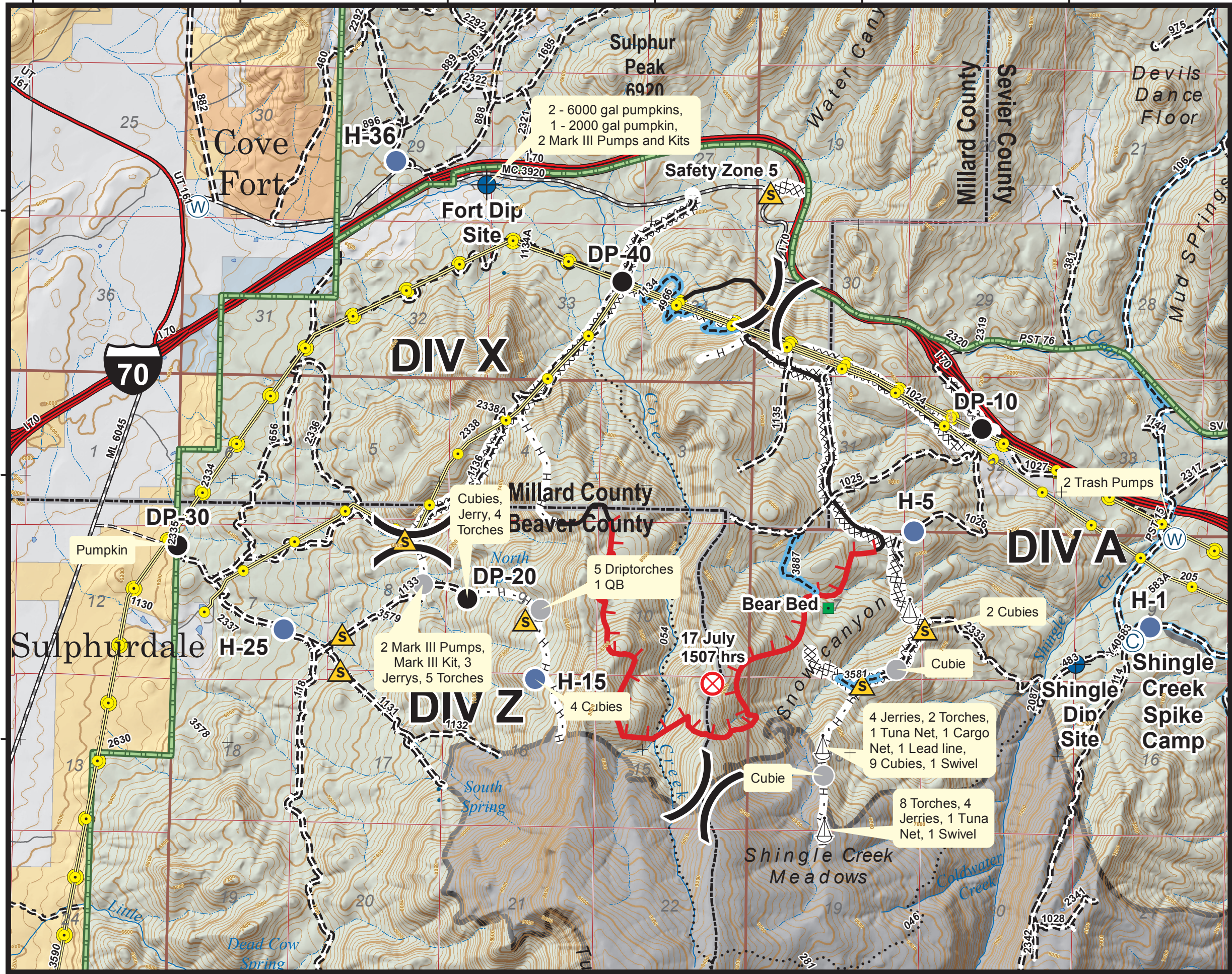


Rehab Map Cove Creek UT-FIF-180318 08/02/2018



Approx 2,620 acres
as of 08/01/2018 1130 hrs

Map Produced By:
mtoone
8/1/2018 20:37 hrs



Feature	Name	Latitude	Longitude
Spike Camp	Spike Camp	38° 33.663'	-112° 27.965'
Dip Site	Fort Dip Site	38° 36.193'	-112° 32.692'
Dip Site	Shingle Dip Site	38° 33.526'	-112° 28.375'
Drop Point	DP-10	38° 34.853'	-112° 29.079'
Drop Point	DP-20	38° 33.841'	-112° 32.782'
Drop Point	DP-30	38° 34.117'	-112° 34.884'
Drop Point	DP-40	38° 35.658'	-112° 31.699'
Helispot	H-1	38° 33.742'	-112° 27.840'
Helispot	H-5	38° 34.265'	-112° 29.561'
Helispot	H-15	38° 33.392'	-112° 32.283'
Helispot	H-25	38° 33.365'	-112° 34.108'
Helispot	H-36	38° 36.320'	-112° 33.350'
Landmark	Bear Bed	38° 33.821'	-112° 30.170'
Equipment	Equip 1	38° 32.870'	-112° 30.184'
Equipment	Equip 2	38° 33.478'	-112° 29.670'
Equipment	Equip 3	38° 33.919'	-112° 33.105'
Equipment	Cattle Tank	38° 33.785'	-112° 32.252'
Safety Zone	Safety Zone 1	38° 34.169'	-112° 33.240'
Safety Zone	Safety Zone 2	38° 33.725'	-112° 32.360'
Safety Zone	Safety Zone 3	38° 33.625'	-112° 33.682'
Safety Zone	Safety Zone 4	38° 33.423'	-112° 33.691'
Safety Zone	Safety Zone 5	38° 36.175'	-112° 30.635'
Safety Zone	Safety Zone 6	38° 33.712'	-112° 29.471'
Safety Zone	Safety Zone 7	38° 33.393'	-112° 29.915'
Sling Site	Sling 1	38° 32.564'	-112° 30.173'
Sling Site	Sling 2	38° 33.033'	-112° 30.194'
Sling Site	Sling 3	38° 33.814'	-112° 29.582'
Water Source	DIV A Water Source	38° 34.247'	-112° 27.674'
Water Source	Cove Fort Water Source	38° 36.042'	-112° 34.779'

	Camp		Uncontrolled Fire Edge
	Dip Site		Completed Line
	Drop Point		Completed Dozer Line
	Helispot		Completed Hand Line
	Water Source		R - Road as Completed Line
	Division Break		S - Safety Zone
	Interstate		FO - Fire Origin
	Highway		SS - Sling Site
	Paved Road		EQ - Equipment
	Gravel Road		PTL - Power Transmission Line
	Dirt Road		FS - FS District Boundary
	Roads, Not Maintained		CL - County Lines
	Surface Type Unknown		TCF - Twitchell Canyon Fire
	50\"/>		USFS - US Forest Service (USFS)
	60\"/>		BLM - Bureau of Land Management (BLM)
	Trails Open to All		IR - Indian Reservation (IR)
	Non-Motorized Trails		ST - State
	Existing Trails MVUM		PR - Private

