

112°36'0"W 112°34'30"W 112°33'0"W 112°31'30"W 112°30'0"W 112°28'30"W 112°27'0"W 112°25'30"W

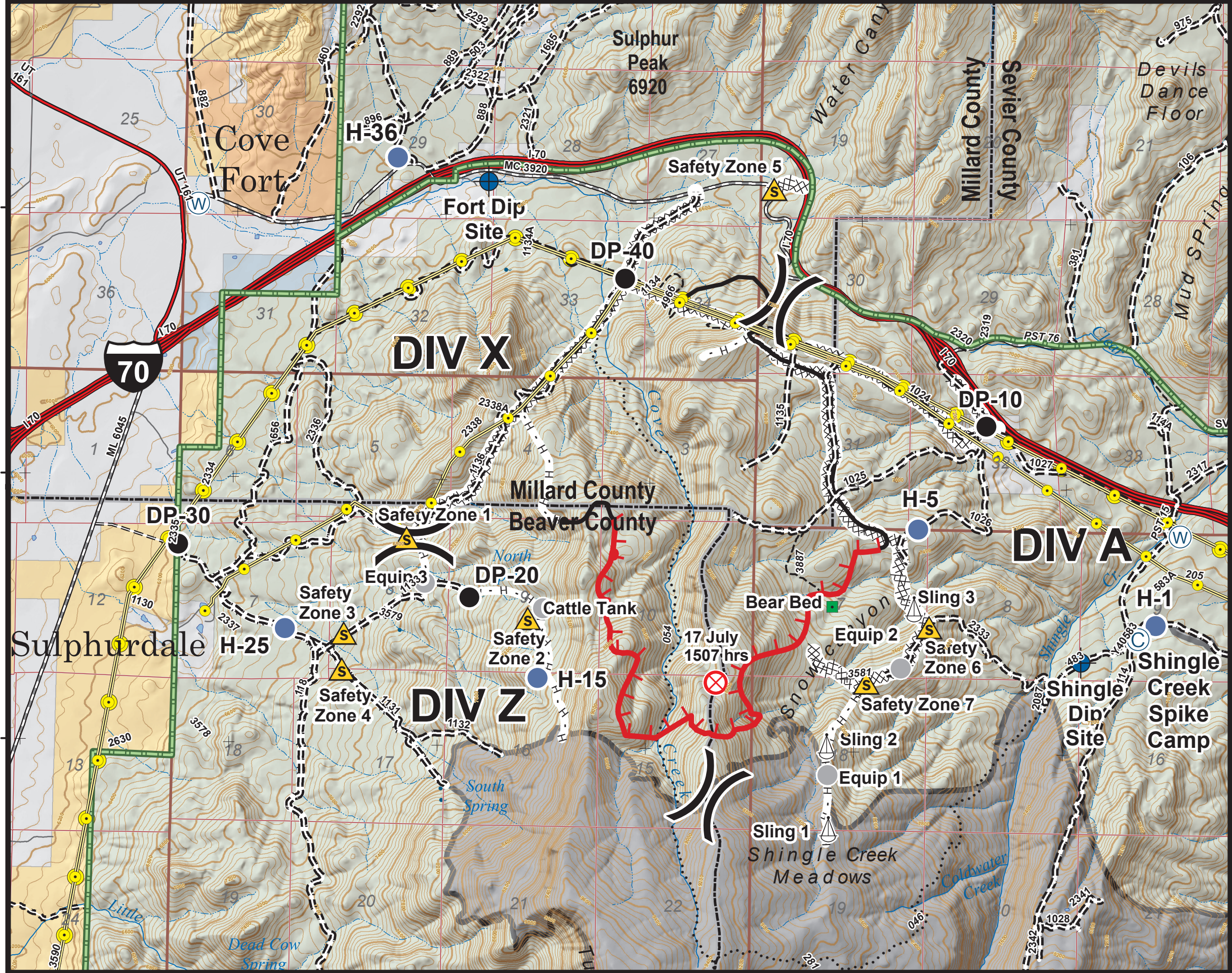
Operations Map Cove Creek UT-FIF-180318 08/02/2018



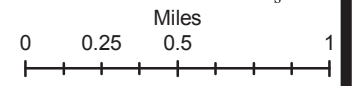
Approx 2,620 acres
as of 08/01/2018 1130 hrs

Map Produced By:
mtoone
8/1/2018 20:15 hrs

Feature	Name	Latitude	Longitude
Spike Camp	Spike Camp	38° 33.663'	-112° 27.965'
Dip Site	Fort Dip Site	38° 36.193'	-112° 32.692'
Dip Site	Shingle Dip Site	38° 33.526'	-112° 28.375'
Drop Point	DP-10	38° 34.853'	-112° 29.079'
Drop Point	DP-20	38° 33.841'	-112° 32.782'
Drop Point	DP-30	38° 34.117'	-112° 34.884'
Drop Point	DP-40	38° 35.658'	-112° 31.699'
Helispot	H-1	38° 33.742'	-112° 27.840'
Helispot	H-5	38° 34.265'	-112° 29.561'
Helispot	H-15	38° 33.392'	-112° 32.283'
Helispot	H-25	38° 33.365'	-112° 34.108'
Helispot	H-36	38° 36.320'	-112° 33.350'
Landmark	Bear Bed	38° 33.821'	-112° 30.170'
Equipment	Equip 1	38° 32.870'	-112° 30.184'
Equipment	Equip 2	38° 33.478'	-112° 29.670'
Equipment	Equip 3	38° 33.919'	-112° 33.105'
Equipment	Cattle Tank	38° 33.785'	-112° 32.252'
Safety Zone	Safety Zone 1	38° 34.169'	-112° 33.240'
Safety Zone	Safety Zone 2	38° 33.725'	-112° 32.360'
Safety Zone	Safety Zone 3	38° 33.625'	-112° 33.682'
Safety Zone	Safety Zone 4	38° 33.423'	-112° 33.691'
Safety Zone	Safety Zone 5	38° 36.175'	-112° 30.635'
Safety Zone	Safety Zone 6	38° 33.712'	-112° 29.471'
Safety Zone	Safety Zone 7	38° 33.393'	-112° 29.915'
Sling Site	Sling 1	38° 32.564'	-112° 30.173'
Sling Site	Sling 2	38° 33.033'	-112° 30.194'
Sling Site	Sling 3	38° 33.814'	-112° 29.582'
Water Source	DIV A Water Source	38° 34.247'	-112° 27.674'
Water Source	Cove Fort Water Source	38° 36.042'	-112° 34.779'



	Camp		Uncontrolled Fire Edge
	Dip Site		Completed Line
	Drop Point		Completed Dozer Line
	Helispot		Completed Hand Line
	Water Source		R - Road as Completed Line
	Division Break		S - Safety Zone
	Sling Site		⊗ - Fire Origin
	Equipment		⚡ - Power Transmission Line
	Bear Bed		FS District Boundary
	Interstate		County Lines
	Highway		Twitchell Canyon Fire
	Paved Road		US Forest Service (USFS)
	Gravel Road		Bureau of Land Management (BLM)
	Dirt Road		Indian Reservation (IR)
	Roads, Not Maintained		State
	Surface Type Unknown		Private
	50\"/>		
	60\"/>		
	Trails Open to All		
	Non-Motorized Trails		



112°36'0"W 112°34'30"W 112°33'0"W 112°31'30"W 112°30'0"W 112°28'30"W 112°27'0"W 112°25'30"W