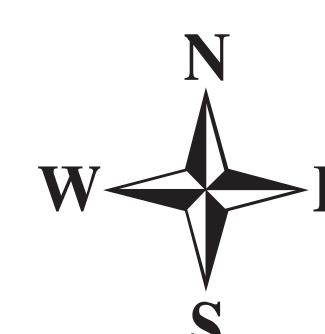


Briefing Map

Cove Creek UT-FIF 180318

08/04/2018

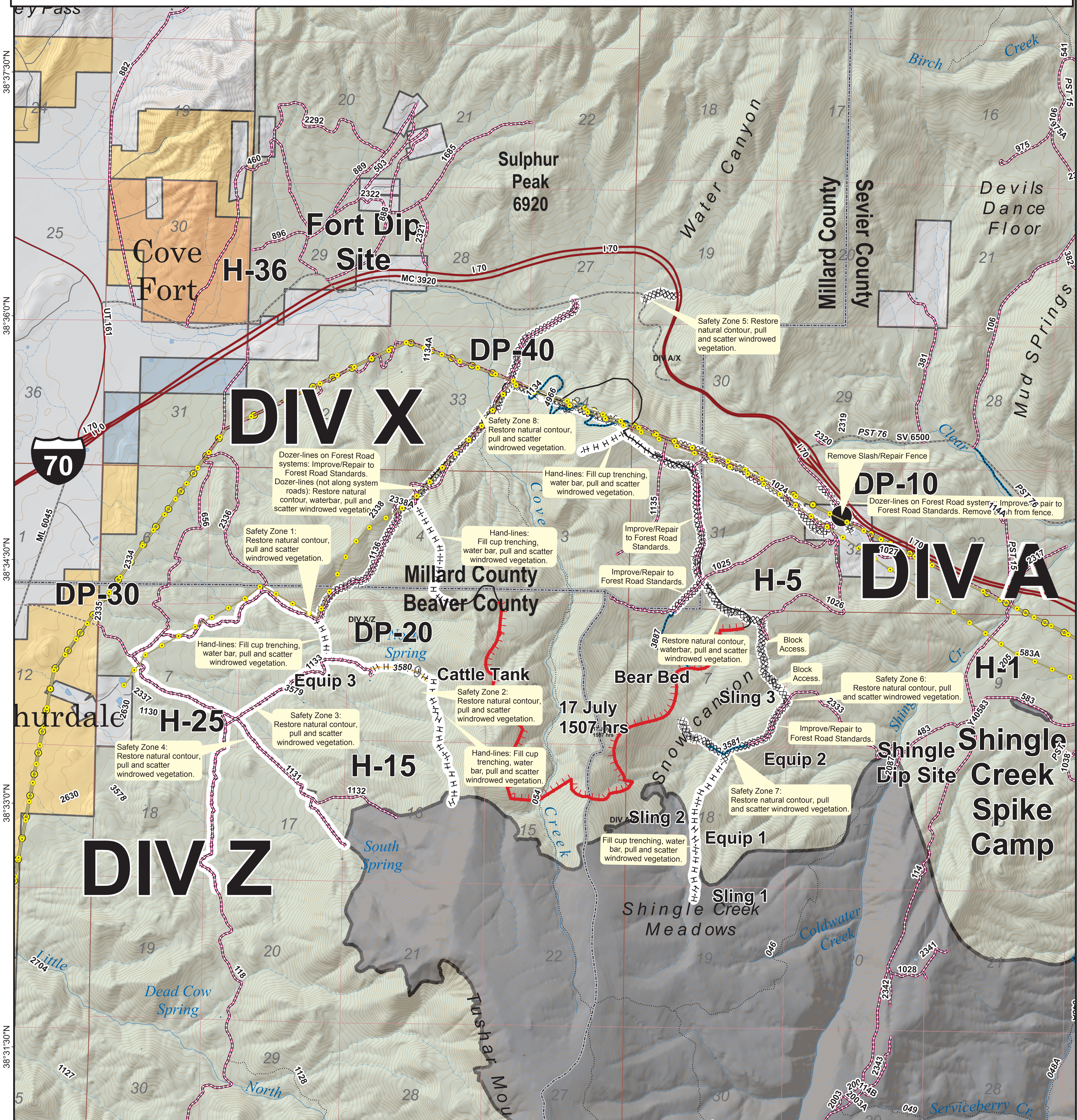
Approx 2620 acres
as of 08/01/2018 1130 hrs



0 0.25 0.5 1
Miles

CENTRAL UTAH
FIRE
INTERAGENCY

Map Produced By:
mtoone
8/4/2018 18:35 hrs



	Camp		Uncontrolled Fire Edge		Existing Roads MVUM		County Lines
	Dip Site		Completed Line		Existing Motorized Trails MVUM		Twitchell Canyon Fire, 2010
	Drop Point		Completed Dozer Line		Admin. Only 50" Trail		US Forest Service (USFS)
	Helispot		Completed Hand Line		Power Transmission Lines		Bureau of Land Management (BLM)
	Water Source		R-R-R Road as Completed Line		Fire Origin		Indian Reservation (IR)
	Division Break		Bear Bed		State		Private
	Safety Zone		Sling Site				
	Equipment						

Feature	Name	Latitude	Longitude
Spike Camp	Spike Camp	38° 33.663'	-112° 27.965'
Dip Site	Fort Dip Site	38° 36.193'	-112° 32.692'
Dip Site	Shingle Dip Site	38° 34.526'	-112° 26.375'
Drop Point	DP-10	38° 34.853'	-112° 29.027'
Drop Point	DP-20	38° 33.841'	-112° 32.782'
Drop Point	DP-30	38° 34.117'	-112° 34.884'
Drop Point	DP-40	38° 35.658'	-112° 31.699'
Helispot	H-1	38° 33.742'	-112° 27.840'
Helispot	H-5	38° 34.265'	-112° 29.561'
Helispot	H-15	38° 33.392'	-112° 32.283'
Helispot	H-25	38° 33.365'	-112° 34.108'
Helispot	H-36	38° 36.320'	-112° 33.350'
Landmark	Bear Bed	38° 33.821'	-112° 30.170'
Equipment	Equip 1	38° 32.870'	-112° 30.184'
Equipment	Equip 2	38° 33.478'	-112° 29.670'
Equipment	Equip 3	38° 33.919'	-112° 31.055'
Equipment	Cattle Tank	38° 33.785'	-112° 32.252'
Safety Zone	Safety Zone 1	38° 34.169'	-112° 33.240'
Safety Zone	Safety Zone 2	38° 33.725'	-112° 32.360'
Safety Zone	Safety Zone 3	38° 33.625'	-112° 33.682'
Safety Zone	Safety Zone 4	38° 33.423'	-112° 33.691'
Safety Zone	Safety Zone 5	38° 36.175'	-112° 30.635'
Safety Zone	Safety Zone 6	38° 33.712'	-112° 29.471'
Safety Zone	Safety Zone 7	38° 33.395'	-112° 29.915'
Sling Site	Sling 1	38° 32.564'	-112° 30.173'
Sling Site	Sling 2	38° 33.033'	-112° 30.194'
Sling Site	Sling 3	38° 33.814'	-112° 29.582'
Water Source	DIV A Water Source	38° 34.247'	-112° 27.674'
Water Source	Cove Fort Water Source	38° 36.042'	-112° 34.779'

