



112°36'0"W 112°34'30"W 112°33'0"W 112°31'30"W 112°30'0"W 112°28'30"W 112°27'0"W 112°25'30"W 112°24'0"W 112°22'30"W 112°21'0"W 112°19'30"W

# Public Information Map



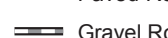
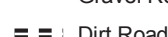

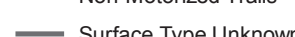
## Cove Creek

### UT-FIF 180381

#### 08/02/2018

 Cove Creek Fire  
 Closure Area

Approx 2620 acres  
as of 08/01/2018 1130 hrs

-  Interstate
-  Highway
-  Paved Road
-  Gravel Road
-  Dirt Roads
-  50 inch or less Trails
-  60 inch or less Trails
-  Trails Open to All Vehicles
-  Non-Motorized Trails
-  Surface Type Unknown

-  US Forest Service (USFS)
-  Bureau of Land Management (BLM)
-  Indian Reservation (IR)
-  State
-  State Parks, Recreation and Wildlife
-  Private



CENTRAL UTAH  
**FIRE**  
INTERAGENCY

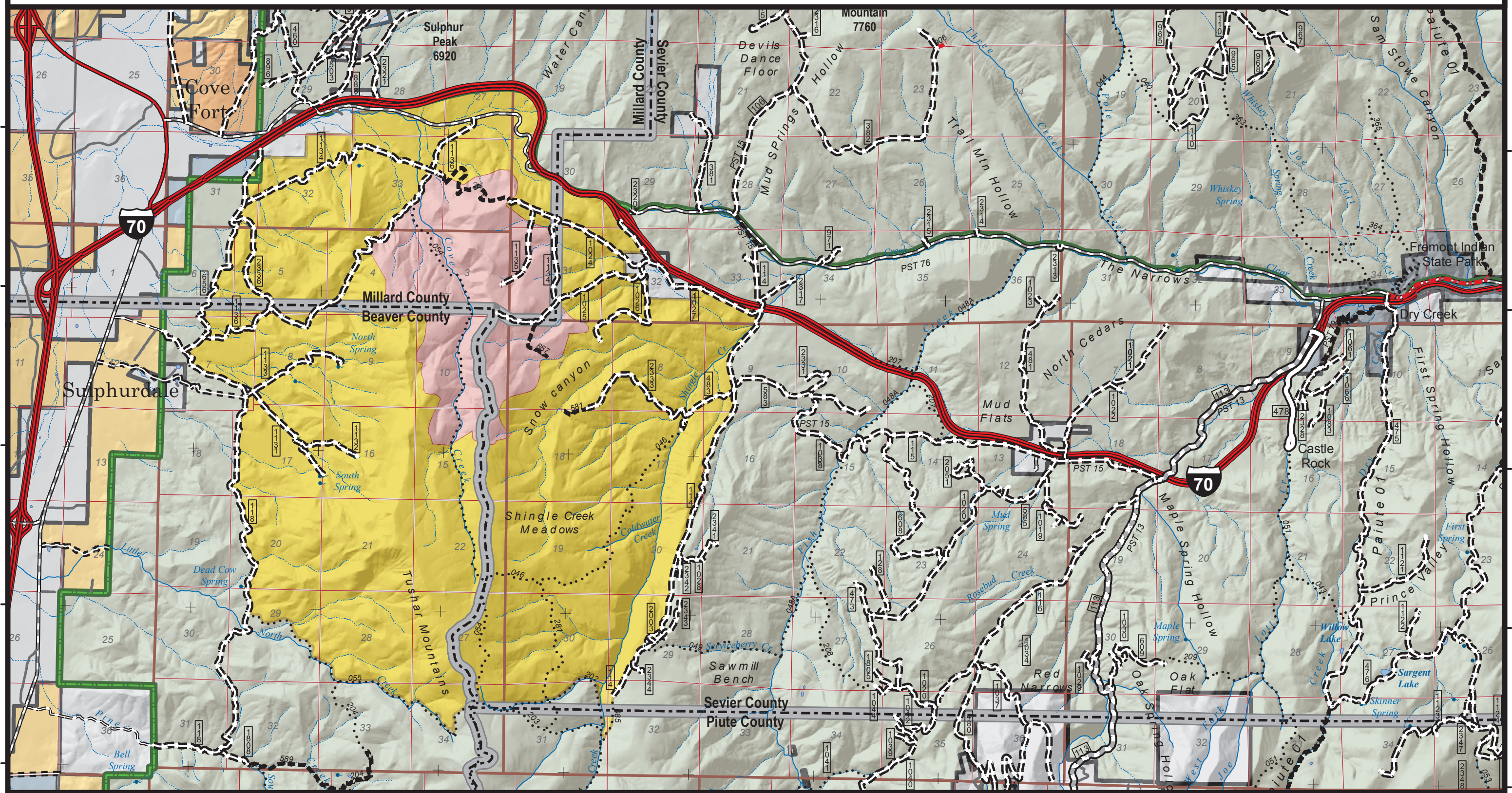


0 0.5 1 2 Miles

Map Produced By:  
mtoone  
8/1/2018 14:32 hrs

38°37'30"N  
38°36'0"N  
38°34'30"N  
38°33'0"N  
38°31'30"N  
38°30'0"N

38°37'30"N  
38°36'0"N  
38°34'30"N  
38°33'0"N  
38°31'30"N  
38°30'0"N



112°36'0"W 112°34'30"W 112°33'0"W 112°31'30"W 112°30'0"W 112°28'30"W 112°27'0"W 112°25'30"W 112°24'0"W 112°22'30"W 112°21'0"W 112°19'30"W