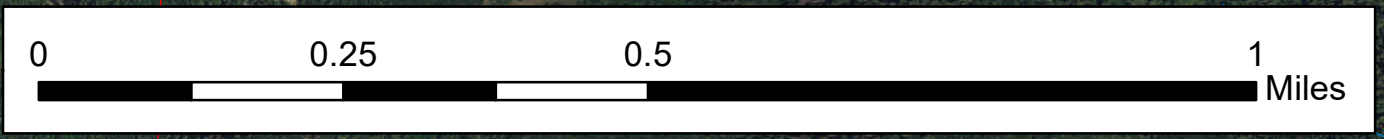
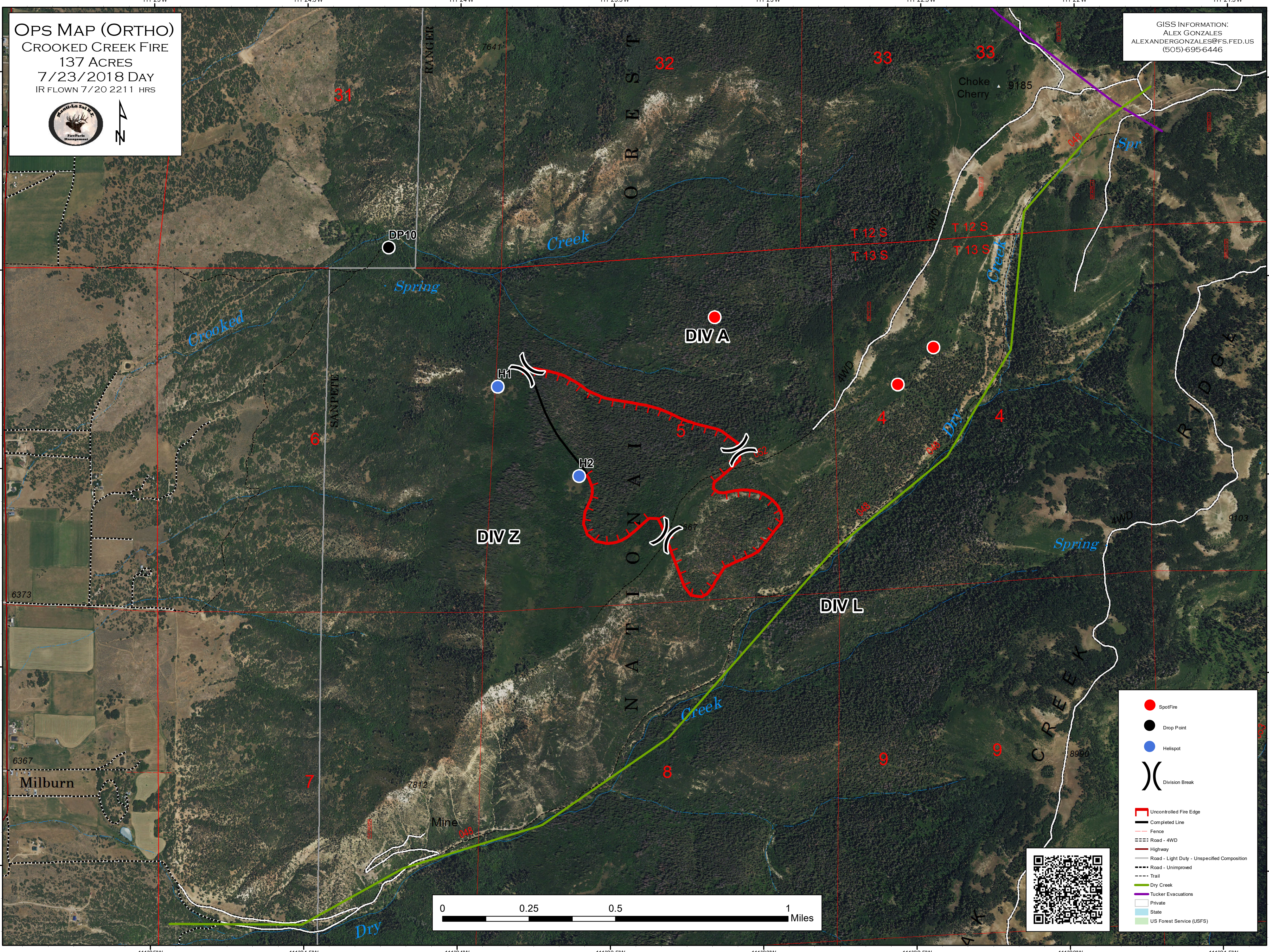


OPS MAP (ORTHO)
CROOKED CREEK FIRE
 137 ACRES
 7/23/2018 DAY
 IR FLOWN 7/20 2211 HRS



GISS INFORMATION:
 ALEX GONZALES
 ALEXANDERGONZALES@FS.FED.US
 (505)-695-6446



- SpotFire
- Drop Point
- Helispot
- X Division Break
- Uncontrolled Fire Edge
- Completed Line
- Fence
- Road - 4WD
- Highway
- Road - Light Duty - Unspecified Composition
- Road - Unimproved
- Trail
- Dry Creek
- Tucker Evacuations
- Private
- State
- US Forest Service (USFS)