
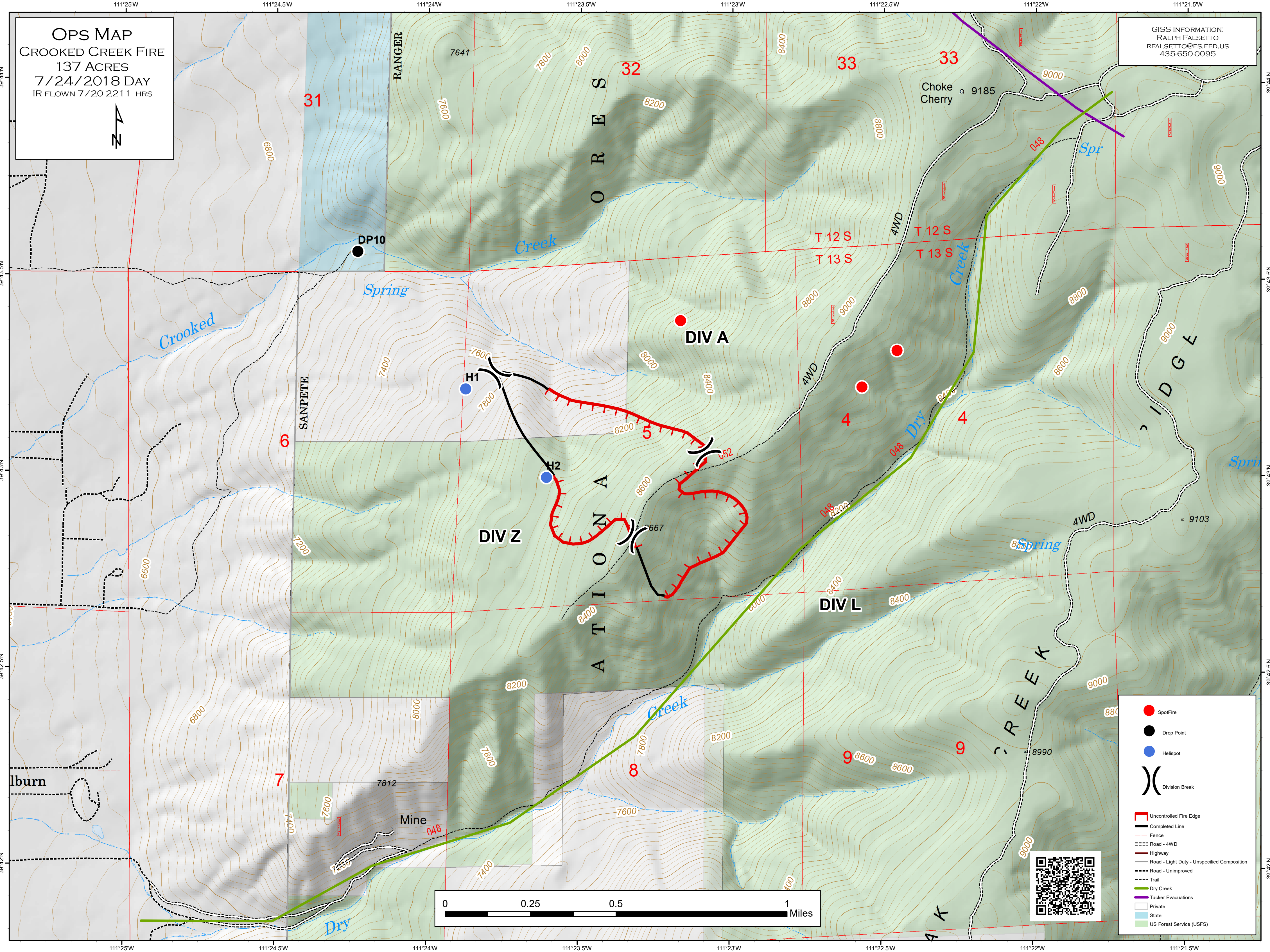
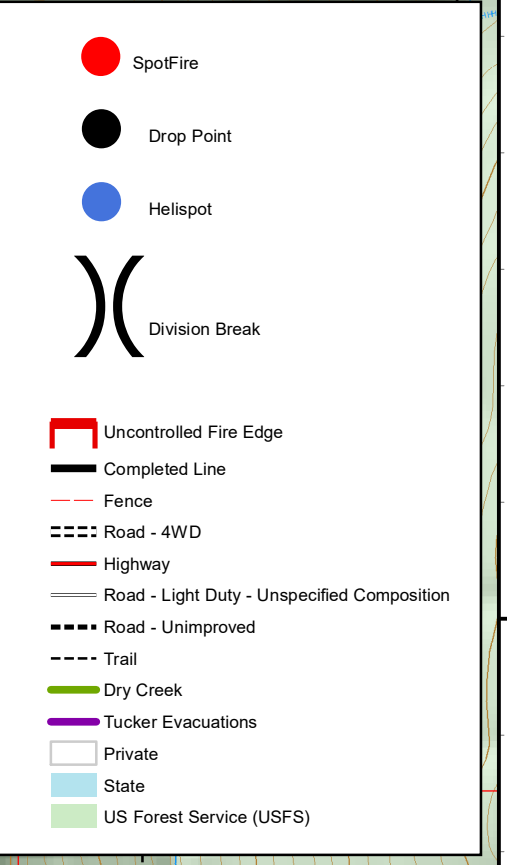


OPS MAP
CROOKED CREEK FIRE
 137 ACRES
 7/24/2018 DAY
 IR FLOWN 7/20 2211 HRS



GISS INFORMATION:
 RALPH FALSETTO
 RFALSETTO@FS.FED.US
 435-650-0095

- Spot Fire
- Drop Point
- Helispot
- ⌘ Division Break
- ▬ Uncontrolled Fire Edge
- ▬ Completed Line
- ▬ Fence
- ▬ Road - 4WD
- ▬ Highway
- ▬ Road - Light Duty - Unspecified Composition
- ▬ Road - Unimproved
- ▬ Trail
- ▬ Dry Creek
- ▬ Tucker Evacuations
- ▭ Private
- ▭ State
- ▭ US Forest Service (USFS)

