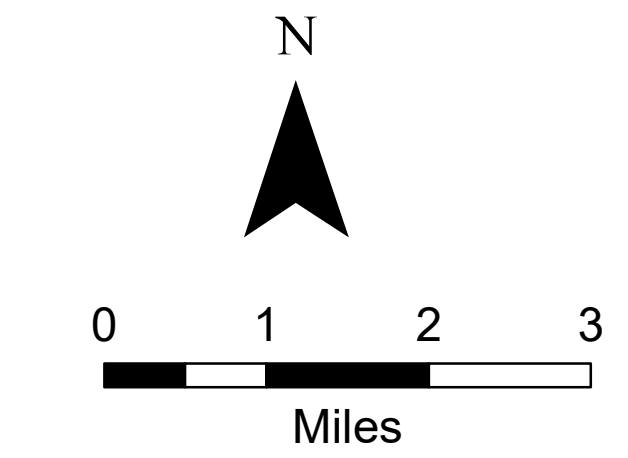
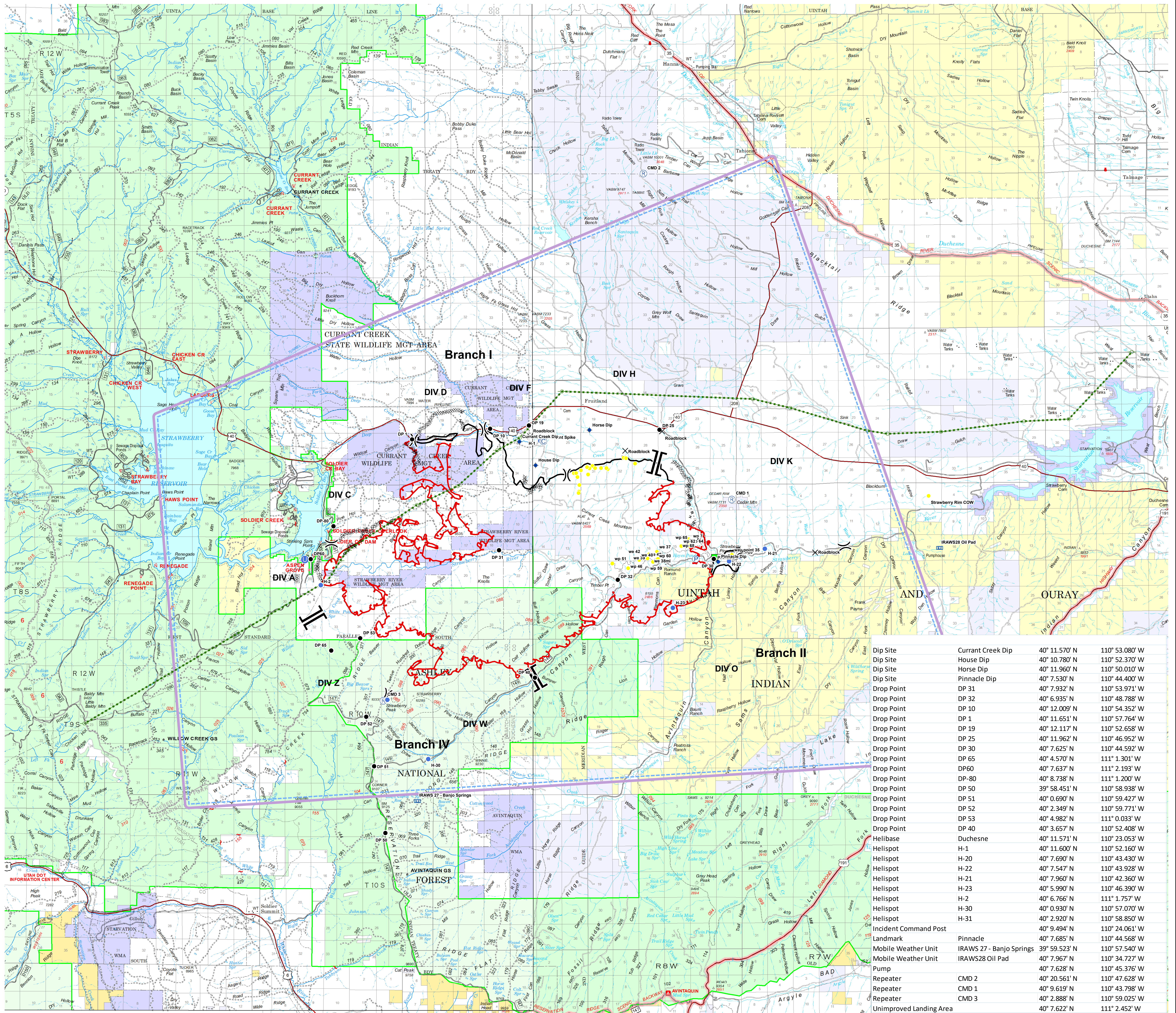


Air Operations

Dollar Ridge
UT-NES-200383
July 8, 2018
47,789 Acres



- Power Poles
- Camp
- Closure
- Dip Site
- Drop Point
- Unimproved Landing Area
- Helispot
- Landmark
- Mobile Weather Unit
- Pump
- Repeater
- Other
- Division Break
- Branch Break
- Transmission Line
- Uncontrolled Fire Edge
- Completed Line
- Completed Dozer Line
- Completed Hand Line
- Road as Completed Line
- TFR



Datum: NAD 1983 UTM Zone 12N
Created by: billsilva
Created Date: 7/7/2018

Dip Site	Currant Creek Dip	40° 11.570' N	110° 53.080' W
Dip Site	House Dip	40° 10.780' N	110° 52.370' W
Dip Site	Horse Dip	40° 11.960' N	110° 50.010' W
Dip Site	Pinnacle Dip	40° 7.530' N	110° 44.400' W
Drop Point	DP 31	40° 7.932' N	110° 53.971' W
Drop Point	DP 32	40° 6.935' N	110° 48.788' W
Drop Point	DP 10	40° 12.009' N	110° 54.352' W
Drop Point	DP 1	40° 11.651' N	110° 57.764' W
Drop Point	DP 19	40° 12.117' N	110° 52.658' W
Drop Point	DP 25	40° 11.962' N	110° 46.952' W
Drop Point	DP 30	40° 7.625' N	110° 44.592' W
Drop Point	DP 65	40° 4.570' N	111° 1.301' W
Drop Point	DP 60	40° 7.637' N	111° 2.193' W
Drop Point	DP 80	40° 8.738' N	111° 1.200' W
Drop Point	DP 50	39° 58.451' N	110° 58.938' W
Drop Point	DP 51	40° 0.690' N	110° 59.427' W
Drop Point	DP 52	40° 2.349' N	110° 59.771' W
Drop Point	DP 53	40° 4.982' N	111° 0.033' W
Drop Point	DP 40	40° 3.657' N	110° 52.408' W
Helibase	Duchesne	40° 11.571' N	110° 23.053' W
Helispot	H-1	40° 11.600' N	110° 52.160' W
Helispot	H-20	40° 7.690' N	110° 43.430' W
Helispot	H-22	40° 7.547' N	110° 43.928' W
Helispot	H-21	40° 7.960' N	110° 42.360' W
Helispot	H-23	40° 5.990' N	110° 46.390' W
Helispot	H-2	40° 6.766' N	111° 1.757' W
Helispot	H-30	40° 0.930' N	110° 57.070' W
Helispot	H-31	40° 2.920' N	110° 58.850' W
Incident Command Post		40° 9.494' N	110° 24.061' W
Landmark	Pinnacle	40° 7.685' N	110° 44.568' W
Mobile Weather Unit	IRAWS 27 - Banjo Springs	39° 59.523' N	110° 57.540' W
Mobile Weather Unit	IRAWS28 Oil Pad	40° 7.967' N	110° 34.727' W
Pump		40° 7.628' N	110° 45.376' W
Repeater	CMD 2	40° 20.561' N	110° 47.628' W
Repeater	CMD 1	40° 9.619' N	110° 43.798' W
Repeater	CMD 3	40° 2.888' N	110° 59.025' W
Unimproved Landing Area		40° 7.622' N	111° 2.452' W