


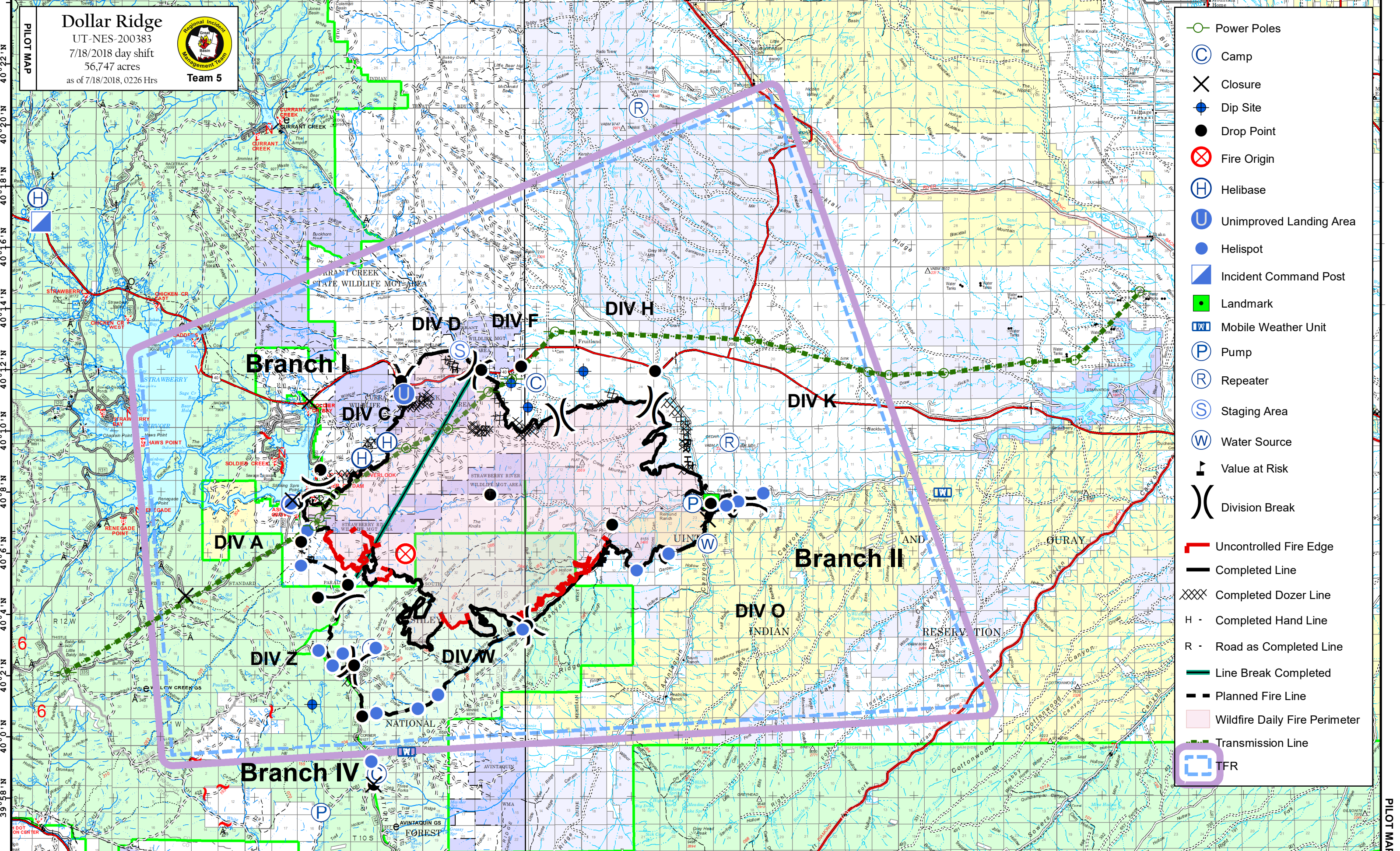
111°14'W 111°10'W 111°8'W 111°6'W 111°4'W 111°2'W 111°0'W 110°56'W 110°52'W 110°48'W 110°44'W 110°40'W 110°36'W 110°32'W 110°28'W 110°24'W 110°20'W 110°16'W

**PILOT MAP**

**Dollar Ridge**  
 UT-NES-200383  
 7/18/2018 day shift  
 56,747 acres  
 as of 7/18/2018, 0226 Hrs

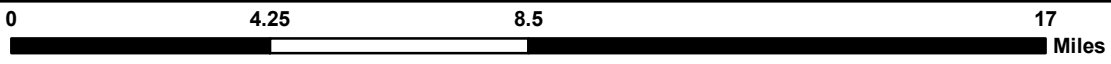


**Team 5**



- Power Poles
- Camp
- Closure
- Dip Site
- Drop Point
- Fire Origin
- Helibase
- Unimproved Landing Area
- Helispot
- Incident Command Post
- Landmark
- Mobile Weather Unit
- Pump
- Repeater
- Staging Area
- Water Source
- Value at Risk
- Division Break
- Uncontrolled Fire Edge
- Completed Line
- Completed Dozer Line
- Completed Hand Line
- Road as Completed Line
- Line Break Completed
- Planned Fire Line
- Wildfire Daily Fire Perimeter
- Transmission Line
- TFR

Coordinate System: NAD 1983 UTM Zone 12N  
 Map Scale: 1:200,000, 1 inch = 16,667 feet





FeatureCategory	Label	LatWGS84_DDM	LongWGS84_DDM
Camp	Currant Spike	40° 11.586' N	110° 52.022' W
Camp	Three Forks Spike	39° 58.805' N	110° 58.811' W
Dip Site	Currant Creek Dip	40° 11.570' N	110° 53.080' W
Dip Site	House Dip	40° 10.780' N	110° 52.370' W
Dip Site	Horse Dip	40° 11.960' N	110° 50.010' W
Dip Site	Pinnacle Dip	40° 7.530' N	110° 44.400' W
Dip Site	DP 85	40° 9.220' N	110° 59.382' W
Dip Site	Wright Dip	40° 1.070' N	111° 1.550' W
Drop Point	DP 31	40° 7.932' N	110° 53.971' W
Drop Point	DP 32	40° 6.935' N	110° 48.788' W
Drop Point	DP 10	40° 12.009' N	110° 54.352' W
Drop Point	DP 1	40° 11.651' N	110° 57.764' W
Drop Point	DP 19	40° 12.117' N	110° 52.658' W
Drop Point	DP 25	40° 11.962' N	110° 46.952' W
Drop Point	DP 30	40° 7.625' N	110° 44.592' W
Drop Point	DP 65	40° 4.570' N	111° 1.301' W
Drop Point	DP60	40° 7.637' N	111° 2.193' W
Drop Point	DP-80	40° 8.738' N	111° 1.200' W
Drop Point	DP 51	40° 0.690' N	110° 59.427' W
Drop Point	DP 50	39° 58.451' N	110° 58.938' W
Drop Point	DP 52	40° 2.349' N	110° 59.771' W
Drop Point	DP 53	40° 4.982' N	111° 0.033' W
Drop Point	DP 40	40° 3.657' N	110° 52.408' W
Drop Point	DP 61	40° 6.388' N	111° 2.023' W
Helibase	Duchesne	40° 11.571' N	110° 23.053' W
Helibase	H-85	40° 9.649' N	110° 58.375' W
Helibase	H-84	40° 9.128' N	110° 59.443' W
Helispot	H-23	40° 5.990' N	110° 46.390' W
Helispot	H-2	40° 6.766' N	111° 1.757' W
Helispot	H-30	40° 0.930' N	110° 57.070' W
Helispot	H-31	40° 2.920' N	110° 58.850' W
Helispot	H-32	40° 2.340' N	111° 0.690' W
Helispot	H-33	40° 2.740' N	111° 0.260' W
Helispot	H-3	40° 7.630' N	111° 2.460' W
Helispot	H-24	40° 5.440' N	110° 47.750' W
Helispot	H-4	40° 5.610' N	111° 2.030' W
Helispot	H-35	40° 3.520' N	110° 52.610' W
Helispot	H-37	40° 0.790' N	110° 58.830' W
Helispot	H-36	40° 1.380' N	110° 56.210' W
Helispot	H-38	40° 2.840' N	111° 1.280' W
Helispot	H-34	39° 59.200' N	110° 59.040' W
Incident Command Post		40° 9.494' N	110° 24.061' W
Repeater	CMD 2	40° 20.561' N	110° 47.628' W
Repeater	CMD 1	40° 9.619' N	110° 43.798' W
Repeater	CMD 3	40° 2.888' N	110° 59.025' W
Unimproved Landing Area		40° 7.622' N	111° 2.452' W
Water Source	Draft Site	40° 6.321' N	110° 44.735' W